

Fourth Statutory Review of Electoral Arrangements

Aberdeenshire Council Area



Local Government Boundary Commission for Scotland

Fourth Statutory Review of Electoral Arrangements

Aberdeenshire Council Area

Constitution of the Commission

Chairman: Mr John L Marjoribanks

Deputy Chairman: Mr Brian Wilson OBE

Commissioners: Professor Hugh M Begg

Dr A Glen

Mr K McDonald

Mr R Millham

Report Number E06002

May 2006

Contents	Page
Summary	Page 7
Part 1 Background	Pages 9 – 14 Paragraphs
Origin of the Review	1
The Local Governance (Scotland) Act 2004	2 – 4
Commencement of the 2004 Act	5
Directions from Scottish Ministers	6 – 9
Announcement of our Review	10 – 16
General Issues	17 – 18
Definition of Electoral Ward Boundaries	19 – 24
Electorate Data used in the Review	25 – 26
Part 2 The Review in Aberdeenshire Council Area	Pages 15 – 24 Paragraphs
Meeting with the Aberdeenshire Council	1 – 3
Concluded View of the Council	4
Aggregation of Existing Wards	5 – 7
Initial Proposals	8 – 14
Informing the Council of our Initial Proposals	15 – 16
The Aberdeenshire Council Response	17 – 18
Consideration of the Council Response to the Initial Proposals	19 – 21
Provisional Proposals	22 – 26
Representations	27
Consideration of Representations	28 – 38
Part 3 Final Recommendation	Pages 25 – 26
Appendices	Pages 27 – 56
Appendix A Extract from Local Governance (Scotland) Act 2004	28 – 29
Appendix B Directions to the Commission	30 – 32
Appendix C Directions to Councils	33
Appendix D Schedule 6 Rules	34
Appendix E Review Timetable	35 – 36
Appendix F Illustrative Maps	37 – 56

Local Government Boundary Commission for Scotland

Mr Tom McCabe MSP
Minister for Finance and Public Service Reform

We, the Local Government Boundary Commission for Scotland, present our proposals for future electoral arrangements for Aberdeenshire Council area resulting from our review of local government electoral arrangements as required by section 4 (1) of the Local Governance (Scotland) Act 2004.

In accordance with the provisions of section 18(3) of the Local Government (Scotland) Act 1973, as amended, copies of our report, together with illustrative maps, are being sent to Aberdeenshire Council with a request that the report and maps are made available for public inspection at their offices. In addition copies of our report and maps in the form of PDF images on CDROM are being sent to those who received a copy of our consultation letter. Further, those who made representations during the 12-week public consultation exercise have been informed that the report has been published.

Notice is being given in newspapers circulating in the Aberdeenshire Council area that the report has been made and that interested parties may inspect the report and maps at offices designated by the Council throughout its area or by accessing these documents on our web site.



John L Marjoribanks
Chairman
for Local Government Boundary Commission for Scotland



Bob Smith
Secretary
Local Government Boundary Commission for Scotland
3 Drumsheugh Gardens
Edinburgh
EH3 7QJ

secretariat@lgbc-scotland.gov.uk
www.lgbc-scotland.gov.uk

May 2006



Summary

- The review was called for by section 4 of the Local Governance (Scotland) Act 2004.
Part 1, paragraph 1
- The first Commencement Order, which signalled the start of the review process, was dated 20 August 2004.
Part 1, paragraph 5
- Directions from the Scottish Ministers were issued to the Commission on 30 August 2004.
Part 1, paragraph 6
- Our review of electoral arrangements was announced in a letter dated 6 September 2004 sent to each Chief Executive of the 32 Councils.
Part 1, paragraphs 10 – 16
- The ward boundaries proposed by our review are based on topographical identifiers contained in the Ordnance Survey MasterMap large-scale digital plans.
Part 1, paragraphs 19 – 24
- The July 2004 electoral register provided the base electorate for the review.
Part 1, paragraphs 25 – 26
- Our first meeting with Aberdeenshire Council took place on 6 October 2004 at the Council headquarters in Aberdeen.
Part 2 paragraphs 1 – 3
- The concluded view of the Council following our first meeting was received by us on 1 November 2004.
Part 2, paragraph 4
- We provided the Council with our initial proposals for 19 wards in Aberdeenshire Council area on 7 March 2005 and asked that a response be made within 2 months.
Part 2, paragraphs 15 – 16
- The Aberdeenshire response to our initial proposals was received on 5 May 2005.
Part 2, paragraph 17
- We published our provisional proposals for 19 wards electing 68 Councillors on 30 June 2005 and asked that representations be made to us by 22 September 2005.
Part 2, paragraphs 23 – 26
- We received 9 representations during the statutory consultation period of 12 weeks.
Part 2, paragraph 27
- Our consideration of representations.
Part 2, paragraphs 28 – 38
- We recommend 8 x three member wards and 11 x four member wards for Aberdeenshire Council area thereby returning a total of 68 elected members.
Part 3, paragraph 1

Part 1 Background

Origin of the Review

1. The Local Governance (Scotland) Act 2004 introduced proportional representation for local authority elections. As a consequence, we were required to review electoral arrangements for all local authorities in Scotland for the elections due to take place in May 2007. This Report presents our findings and recommendations resulting from the review of Aberdeenshire Council area called for by section 4(1) of the 2004 Act.

The Local Governance (Scotland) Act 2004

2. The 2004 Act made a number of changes to the existing legislation, the Local Government (Scotland) Act 1973, as amended. These changes are set out at Appendix A. However, some of the changes have a particular impact on the review process and it is perhaps worth noting the following provisions:

- at least 2 months before taking any steps to inform other persons of our draft proposals, or any interim decision not to make proposals, we should inform the Council of our proposals (or any decision not to make proposals); and
- before informing any other person of our initial draft proposals, we should take into consideration any representation made by the Council during the period of 2 months beginning on the day on which the Council was informed of our initial draft proposal.

3. Schedule 6 to the 1973 Act, as amended, was further amended by the 2004 Act so that:

- at 1(2), the number calculated by dividing the number of local government electors in each electoral ward of a local government area by the number of councillors to be returned in that ward shall be, as nearly as may be, the same; and
- at 1(3)(b), any local ties which would be broken by the fixing of any particular boundary but if, in any case, there is a conflict between those criteria, greater weight shall be given to the latter.

4. The full text of the Schedule 6 rules as amended is set out at Appendix D.

Commencement of the 2004 Act

5. The Minister for Finance and Public Services signed the first Commencement Order in relation to the Local Governance (Scotland) Act 2004 on 19 August 2004. As a consequence, Sections 4(1) to (4), 5(a) to (c) and (f) (Reviews of electoral arrangements) and Section 6 (Interpretation of Part 1) of the 2004 Act came into force on 20 August 2004. The Commencement Order also stated that, in exercising the functions conferred under the provisions referred to above, Scottish Ministers and the Commission should act on the assumption that the provisions of Part 1 of the 2004 Act are in force for all purposes.

Directions from Scottish Ministers

6. On 30 August 2004, Scottish Ministers issued Directions to us in exercise of the powers conferred by Section 18(2A) and 18(2B) of the Local Government (Scotland) Act 1973, as amended. The Directions apply during the current review to any consultation conducted by us in accordance with Section 18(2)(a) of the 1973 Act, with the Council of any local government area affected by a review under Part II of that Act. A copy of these Directions is at Appendix B.

7. Amongst other things, the Directions required us to inform each Council, within 14 days of the date of the Directions, in writing, in a letter sent by recorded delivery addressed to the Chief Executive, of the:

- timetable we proposed for the consultation;
- timetable we proposed for the review;
- general approach we proposed to adopt in formulating proposals for ward boundaries;
- information we would like to have available to use in formulating our proposals;
- assistance which each Council would be asked to render to us in the process of review; and
- such other matters we felt appropriate.

8. On 30 August 2004, Scottish Ministers similarly issued Directions to Councils that they should cooperate with us in the conduct of our review and, in particular, that they should:

- establish and maintain an ongoing dialogue which, where appropriate, may include meetings with us;
- take all reasonable steps to ensure that any views expressed, or purporting to be expressed, by or on behalf of the Council to us are accurate;
- provide us with all such information as we may reasonably request; and
- provide us with all such information that the Council considered relevant, including any proposals or ideas a Council may have in relation to new ward boundaries, or otherwise in relation to the formulation of our proposals.

9. A copy of the Directions to Councils is set out at Appendix C.

Announcement of our Review

10. We announced the start of our review of electoral arrangements in a letter to the Chief Executive of Aberdeenshire Council dated 6 September 2004. With regard to our initial consultation, we informed the Chief Executive that paragraph 7 (subject to paragraph 9) of the Ministerial Directions to us mentioned above stipulated that we should meet with the Council no later than 12 weeks from the date of our letter. We were required to offer each Council two dates for such a meeting and that such a meeting should take place during the Council's ordinary working hours.

11. We proposed that our meeting with Aberdeenshire Council should take place on either 23 September 2004 at 14:00 hrs or 06 October 2004 at 14:00 hrs. We asked the Council to inform us of any other dates within the 12-week period determined by the Directions which should be avoided in the event of our initial dates being unsuitable. We noted that we expected that meetings would be held at the Council's offices but offered, if necessary, to accommodate a meeting at our offices in Edinburgh.

12. With regard to the proposed meeting, we informed the Chief Executive that we would be represented by a Commissioner accompanied by a member or members of our Secretariat. We asked for facilities to be made available which would allow us to make a short presentation to provide background information and to illustrate how we proposed to undertake the review.

13. With our letter we enclosed an outline timetable (Appendix E) which set out the main stages for our review. We also set out details of the general approach which we intended to adopt in considering how revised electoral wards suitable for returning 3 or 4 elected members might be constructed within the terms of the statutory rules, whilst seeking better to reflect local perceptions of natural communities where possible and practicable to do so. We set out our proposal to use information from the July 2004 electoral register as the base electorate for our review and our intention to make available to the Council geographic information systems (GIS) data files containing counts of electors for each postcode within the Council area which would facilitate spatial analysis of these data.

14. Bearing in mind the importance we attached to perceptions of community focus and our concept of the contribution that this focus might make to the delineation of more stable boundaries in the longer term, we asked the Council to identify and map what it considered to be the boundaries between communities within its area. We made it clear that we were particularly interested in such boundaries being identified within contiguous built-up areas, such settlements, or groups of settlements, being likely to merit more than one multi-member ward. We also asked for information which would allow us to make a forecast of the electorate within the Council area at 2009, as required by the legislation.

15. We asked the Council to nominate an official as the recognised point of contact so that the close working relationship necessary to conduct a successful review could be established. We asked if the Council would confirm whether the locations used at the last review in 1996/1998 to deposit material for public consultation remained appropriate and if they would provide details of alternatives where necessary. We also asked for a list of the newspapers circulating within the Council area normally used for the publication of Statutory Notices.

16. We asked the Chief Executive if, prior to our proposed meeting, we could be informed of any particular issues that the Council might wish to discuss with us.

General Issues

17. Three developments have made it possible for us to reconsider the process and practices of reviewing local government electoral arrangements and of accurately defining the boundaries of proposed wards. Firstly, the availability of computer-based geographic information systems (GIS) provides us with the ability to analyse a variety of localised data and then to develop and explore options for revised electoral ward geography. Secondly, the GIS technology, used in conjunction with Ordnance Survey (OS) large-scale digital data also allows for the boundaries of wards to be more precisely defined than has hitherto been possible – thus obviating the need for written boundary descriptions. Thirdly, the Representation of the People (Scotland) (Amendment) Regulations 2002 provide us, for the first time, with formal access to information contained in electoral registers and,

importantly, allow us to obtain that information in an electronic format which can be managed and spatially examined by means of our GIS facilities.

18. Use of the GIS technology, large-scale digital mapping and electoral register data in examining, reviewing and defining ward boundaries is outlined below.

Definition of Electoral Ward Boundaries

19. Defining ward boundaries can raise particular difficulties in areas where changes to the built geography are not reflected on available paper maps. In many parts of Scotland such changes are now occurring more rapidly than in the past, with considerable consequences for our boundary review work.

20. The introduction of OS MasterMap® large-scale digital mapping affords the opportunity for the first time for electoral ward boundaries to be defined by means of unique topographical identifiers (TOID®s) which accurately identify the position of the natural and built features depicted by the large-scale digital data. Accordingly, it is possible to identify the boundaries of electoral wards electronically by directly linking the line of any boundary to, for the most part, the OS TOID®s.

21. All Councils in Scotland now have full access to OS MasterMap®, as do all central government bodies, agencies and government-sponsored organisations with GIS facilities. Generally, all such bodies using large-scale digital mapping have a preference for boundary information to be defined against that background.

22. As a consequence:

- all of the proposed ward boundaries we recommend are directly related to digital information contained in the Topography layer of OS MasterMap®, which was supplied to us by OS in July 2004, except where circumstances demand that a line between 2 unconnected TOID®s is necessary, for example, in crossing a road or river;
- where part of a ward boundary and the boundary of the Council area are coterminous, that part of the ward boundary is the boundary of the Council area as depicted in the Administrative Boundaries theme of the Topography Layer of OS MasterMap® as supplied to us by OS in July 2004; and
- where applicable, the coastal boundary of a ward is defined by means of the low water mark springs as depicted in a large-scale digital data set (prepared on our behalf by OS from its large-scale digital information) except in areas where, historically, all or part of the Council's seaward boundary presently has a recognised off-shore definition.

23. We are aware that, at the time of this review, OS is undertaking a Positional Accuracy Improvement initiative (PAI) and that it does not expect to complete this work in Scotland until March 2006. Further, the results of the PAI will not be fully incorporated into the OS large-scale digital maps until later in that year. Even after this detailed work by OS, the position of residential property existing at the time of our review will remain within the ward as defined by our review. This provides better long-term accuracy than would be provided by written boundary descriptions.

24. Drawing these matters together, we have worked on the reasonable assumption that the boundaries of wards will be more accurately defined than has been possible at previous reviews

and that any future dispute over the line of a particular boundary will be capable of resolution by reference to deposited copies of the ward boundaries in digital form in conjunction with deposited copies of the OS MasterMap® data (Topography layer and Administrative Boundaries theme of the Topography layer and coastline data) mentioned at paragraph 22 above.

Electorate Data used in the Review

25. As mentioned at paragraph 17 above, in preparation for this review, we investigated and tested the potential offered by GIS technology in the preparation of proposals for revised electoral arrangements. To make fullest use of GIS systems in our review activities it is necessary to have the basic numerical data, for the most part electorate information, in a format which allows them to be directly associated with digital mapping showing the underlying geography to which it relates. Ideally, our preference would have been to link addresses in the electoral register directly to the background geography by means of a geo-referenced address database. However, in the absence of a definitive national address database, and being aware of the shortcomings of available address-based GIS databases, we researched the potential for making use of postcode geography maintained by the General Register Office for Scotland (GRO(S)) as a means of identifying the number of electors on the electoral register at a level of resolution low enough for us to develop and consider proposals for the boundaries of revised electoral wards. Initial tests, involving matching the postcodes for addresses on the electoral register with the GRO(S) postcode geography files, indicated that we could successfully identify electors on the electoral register at the small-user postcode which contained their address and, as a consequence, establish accurate counts of electorate for these postcodes.

26. The availability of up-dated electoral register information on a monthly basis allowed us to associate information on the electoral register at July 2004 with the most up-to-date postcode geography available from GRO(S) (August 2004) thus minimising the potential for mismatches between the two data sets. As a consequence, at the start of our review in Aberdeenshire Council area, of the 177,584 electors on the register at July 2004, 177,520 (99.96 percent) could be identified within the postcode geography held in our GIS. The residual number of 64 electors were contained in 21 postcodes which, as far as we could ascertain, were newly allocated by the Post Office and, as such, had not yet appeared in the latest Post Office Address Files which GRO(S) uses to update and maintain its postcode geography system. We were, therefore, confident that postcoded electorate data for Aberdeenshire Council area could be used as the initial building blocks for reviewing electoral arrangements in that area.

Part 2 The Review in Aberdeenshire Council Area

Meeting with the Aberdeenshire Council

1. Our initial meeting with the Aberdeenshire Council took place on 6 October 2004 at 14:00 hrs at the headquarters offices of the Council at Westburn Road, Aberdeen. We were represented at that meeting by Richard Millham who was accompanied by Bob Smith from our Secretariat.
2. We made a short illustrated presentation which set out the background to the review and the nature of our GIS systems, which provided us with the facility quickly and accurately to prepare proposals and examine alternatives. We demonstrated that the GIS allowed us to look closely at relevant matters such as the geography and topography, settlement patterns and communication links within Council areas. We explained that, as required by the Schedule 6 Rules, we needed information from the Council on house building, demolitions and known institutional development for the 5-year period to 2009 in order to form a view on the number of electors in the Council area at that time. We also invited Councils to provide information which would help us define areas recognised locally as communities. We set out our proposed timetable for the review, which envisaged 7 stages with completion by August 2006. A copy of the outline timetable is set out at Appendix E.
3. Following our presentation, we answered some general questions on matters relating to the review process. We also invited, and took careful note of, various views expressed in relation to the review in the Council area.

Concluded View of the Council

4. The Ministerial Directions (Appendix B) issued on 30 August 2004 stated that each Council should, if it so desired, submit its concluded views on review matters to the Commission within one month of the date of our initial meeting. Aberdeenshire Council submitted its concluded view on 1 November 2004. This included proposals for revised wards which recognised the 6 administrative areas that had been established for more than 8 years. Their retention was thought to underpin established community links and local area boundaries; and they were recognised by partner organisations.

Aggregation of Existing Wards

5. In compliance with the legislation as amended, our Secretariat set out for us options for creating new 3 or 4 member wards by combining existing single member wards. In reviewing the Council area, our Secretariat recognised that in many areas a simple aggregation of existing wards resulted in a great number of disparate communities being brought together. In areas containing larger settlements, there were more divisions within communities than would otherwise be necessary.
6. After consideration of these, and all the other relevant matters, we were not persuaded that our initial proposals should be based on a configuration dictated by an aggregation of existing wards. We decided not to continue with that approach because if we did not:

- the northern coastal communities between Macduff and Sandhaven could be combined to provide a better community focus;

- Collieston could be associated with Ellon in a ward that was more sympathetic to the local geography;
- it would be possible to give greater weight to the approach outlined by the Council; and
- under an approach not based on aggregation of existing wards better account could be taken of changes in the distribution of the electorate consequent on new housing and other developments.

7. As a consequence of our decision, our Secretariat then prepared alternative designs for revised wards using the methodology made known to the Council and bearing in mind all of the observations provided to us in its concluded view.

Initial Proposals

8. Our Secretariat developed a structure of 19 wards, drawing on the existing administrative areas' geography. We noted that 13 wards showed no significant difference to those offered by the Council. For the most part community considerations and the range of divergence from parity were acceptable. The only substantial differences arose in the areas covered by wards 1 – 6.

9. With regard to the boundary between Wards 1 and 2, we agreed that the River Deveron produced a clearly identifiable natural boundary for the eastern and southern extents of Ward 1. We noted the divergence from parity but concluded that, on balance, the proposal could be adopted within the terms of the statutory rules.

10. We agreed also that the boundary between Wards 2 and 3 identified by our Secretariat appeared better to reflect community considerations in respect of the settlements lying to the east and south of Fraserburgh. We noted the higher divergence from parity than that shown in the Council's configuration, but we gave such weight to community focus in this case that we decided that the proposals could be adopted within the terms of the statutory rules.

11. With regard to Wards 4, 5 and 6, which covered the Buchan and Peterhead areas, we recognised that there was sufficient electorate to justify 11 elected members in 3 wards. Given that position, it was necessary to divide the town of Peterhead. We noted that the Council had suggested 2 wards: one contained the majority of the Peterhead electorate; the other associated the remainder with an extensive surrounding rural area. We preferred a more even split of the electorate between 2 wards each of which incorporated rural electorates, one to the north and the other to the south. This solution recognised the focus that the core of Peterhead provided for both wards, while bearing in mind that the A90 provided a strong transport link between the urban and rural electorates. Looking at Ward 4, we were not convinced that the geography of the ward proposed by the Council was appropriate. In particular we had reservations with regard to the corridor which linked a substantial number of electors in the landward areas with those along the coast at Loch Strathbeg. We considered the latter to be more closely associated with either Fraserburgh or Peterhead. We agreed that our Secretariat's proposals clearly defined a wholly landward and largely rural ward which was particularly well served by the transport network provided by the A948, A950, A952, A981 etc. On reviewing the above matters, we agreed to adopt our Secretariat's proposals for Wards 4, 5 and 6.

12. We had some concerns with the northern part of Ward 18 and explored the potential for uniting Lower Deeside with Deeside. However, we were unable to find an acceptable alternative solution and

agreed that the arrangements proposed by our Secretariat, which reflected the position adopted by the Council, should be retained.

13. We agreed that our Secretariat's draft proposals should be adopted as our initial proposals. In the course of our deliberations we took into account fully the Schedule 6 rules, and the requirement placed upon us to make recommendations which, in our view, were in the interests of effective and convenient local government.

14. Following full discussion it was agreed that our initial proposals for Aberdeenshire Council area should comprise 19 electoral wards of which 8 were 3-member wards and 11 were 4-member wards as follows:

Ward Number a	Forecast Electorate b	Number of Elected Members c	Average Electorate per Member d	Divergence from Parity (%) e
1	8,860	3	2,953	7
2	7,450	3	2,483	-10
3	11,330	4	2,833	3
4	10,990	4	2,748	0
5	10,730	4	2,683	-3
6	8,020	3	2,673	-3
7	8,630	3	2,877	4
8	11,400	4	2,850	4
9	11,260	4	2,815	2
10	8,250	3	2,750	0
11	10,430	4	2,608	-5
12	8,670	3	2,890	5
13	11,050	4	2,763	0
14	11,510	4	2,878	5
15	8,650	3	2,883	5
16	8,310	3	2,770	1
17	10,350	4	2,588	-6
18	10,790	4	2,698	-2
19	10,510	4	2,628	-5

Informing the Council of our Initial Proposals

15. We submitted our initial proposals to Aberdeenshire Council on 7 March 2005 illustrated by maps showing the boundaries of the proposed wards. We also provided details of the forecast of electorate for each ward at 2009, a GIS file containing the boundaries of each ward and a CDROM containing maps of the proposed ward boundaries in PDF image format. (A GIS file containing the GRO(S) postcode geography showing the 2004 electorate together with the expected new build/demolition etc data and the electorate for each postcode at 2009 arising from these components of change was also available to the Council to assist with the review process.)

16. We asked the Council to provide its views on our initial proposals within two months as specified in the legislation. Contact was maintained with the Council at officer level throughout this initial consultation period.

The Aberdeenshire Council Response

17. We received the Aberdeenshire Council's written response to our initial proposals on 5 May 2005. The Council acknowledged that our proposals reflected the structure of administrative areas and considered that the proposals for Wards 1-3, 7-9 and 12-19 were acceptable. Two amendments were requested as follows:

- that proposals for Buchan and Peterhead areas, Wards 4 – 6, as set out with its concluded view, should be adopted; and
- the boundaries around Wards 10 and 11, Inverurie and Kintore respectively, should be modified so that all of the immediately adjoining electorates were included within the wards which focussed on the respective towns.

18. The Council provided names for the 19 new wards.

Consideration of the Council Response to the Initial Proposals

19. We noted the Council's general acceptance of our initial proposals for 14 of the 19 wards we proposed. We also considered the Council's preferred configuration of wards in the Buchan and Peterhead areas. We re-examined the alternatives but, in the absence of any new substantive evidence, we were not persuaded to amend our initial proposals at this stage of our review.

20. We considered the Council's representations regarding the boundaries around Inverurie and Kintore and agreed that it would be possible to amend our proposal with only a minimal impact on the electorates in both wards. Accordingly, we agreed to adopt the Council's proposed amendment.

21. We considered the ward names suggested by the Council and adopted them as our own.

Provisional Proposals

22. Our provisional proposals for revised electoral arrangements in Aberdeenshire Council area made provision for a Council of 68 elected members in 8 wards each returning 3-members and 11 wards each returning 4 members as follows:

Ward		Forecast Electorate	Number of Elected Members	Average Electorate per Member	Divergence from Parity(%)
Number a	Name b				
1	Banff and District	8,860	3	2,953	7
2	Troup	7,450	3	2,483	-10
3	Fraserburgh and District	11,330	4	2,833	3
4	Central Buchan	10,990	4	2,748	0
5	Peterhead North and Rattray	10,730	4	2,683	-3
6	Peterhead South and Cruden	8,020	3	2,673	-3
7	Turriff and District	8,630	3	2,877	4
8	Mid Formartine	11,400	4	2,850	4
9	Ellon and District	11,260	4	2,815	2
10	West Garioch	8,230	3	2,743	0
11	Inverurie and District	10,450	4	2,613	-5
12	East Garioch	8,670	3	2,890	5
13	Westhill and District	11,050	4	2,763	0
14	Huntly, Strathbogie and Howe of Alford	11,510	4	2,878	5
15	Aboyne, Upper Deeside and Donside	8,650	3	2,883	5
16	Banchory and Mid Deeside	8,310	3	2,770	1
17	North Kincardine	10,350	4	2,588	-6
18	Stonehaven and Lower Deeside	10,790	4	2,698	-2
19	Mearns	10,510	4	2,628	-5

23. We published our provisional proposals for revised electoral arrangements in Aberdeenshire Council area on 30 June 2005. These differed from our initial proposals in that they reflected the revision of the boundary between Wards 10 and 11 and, in addition, contained minor changes necessary to fix the proposed boundaries to the OS MasterMap® TOID®s (see Part 1 paragraphs 19-24).

24. A statutory notice, detailing where our provisional proposals had been deposited for the public consultation and setting out the arrangements we had made for receiving representations, was published in the Press and Journal. Copies of the documents and maps deposited for the public consultation were also placed on our web site. A short news release was issued on 29 June 2005. The Council was also provided with copies of the documentation and maps on CDROM which it was free to distribute on a wider basis. Further, we provided the Council with GIS files containing the proposed ward boundary details.

25. All MPs and MSPs with a constituency interest were provided with copies of our provisional proposals on CDROM as were the headquarters organisations of the political parties represented at the Scottish Parliament. We also informed the Scottish Parliament Information Centre, Community Councils, Electoral Registration Officers and the Electoral Commission of our provisional proposals.

26. We asked that representations should be made to us within the 12-week period ending on 22 September 2005. We informed all concerned that representations could be made by writing to our Secretary at 3 Drumsheugh Gardens Edinburgh, EH3 7QJ, by email at aberdeenshire@lgbc-scotland.gov.uk, by fax at 0131 538 7511 or by using the representations pro forma accessible on our web site at

www.lgbc-scotland.gov.uk. Those making representations were asked to provide their full postal address including postcode.

Representations

27. Nine representations were received during the statutory public consultation. The main points raised by the various parties are summarised below:

The Council

Aberdeenshire Council wrote to advise that it agreed all but 3 of the wards we proposed and requested that its proposal for Wards 4-6 (Buchan/Peterhead areas) be adopted in preference to our provisional proposals, thereby reflecting the local preference. It also sought confirmation that the boundaries around Inverurie and Kintore had been amended to ensure that the electorate in adjacent communities would be located in wards relating to both towns as it had earlier requested.

Members of the Scottish Parliament

Mike Rumbles MSP objected to Drumoak and Durriss being included within a ward that also included Stonehaven. He had not spoken to any resident of Drumoak or Durriss who was in favour of our proposals. Both communities looked to Banchory for their local needs, and the proposals would result in their being amalgamated with a town that is geographically remote and with which local people did not identify.

Further, the area of Community Council of Crathes, Drumoak and Durriss would be split with Crathes in Ward 16 and Drumoak and Durriss in Ward 18. He requested the transfer of Drumoak and Durriss to Ward 16 and suggested that this proposal would allow Wards 16 and 18 to return 4 and 3 members respectively. His stated concerns were in securing electoral arrangements that would provide effective and convenient local government, not with the number of Councillors required for each of the wards.

Councillors

Councillor Wallace objected to the division between Wards 17 and 18, believing that boundaries should follow recognised community links and, in particular, should not ignore school catchments or community council boundaries, without due cause. In terms of social and retail identity: Netherley and Cookney looked to Stonehaven; Newtonhill and Maryculter looked to Banchory-Devenick; and Durriss and Banchory-Devenick looked principally to Aberdeen.

Lairhillock Primary School catchment should not be split between 2 wards because this new school must be encouraged to develop an identity as part of the Mackie Academy zone with leanings towards Stonehaven. Maryculter was zoned to Cults Academy in Aberdeen City. Banchory-Devenick school recently voted 100% to reject a merger with Portlethen School, indicating an absence of affinity with that community. Although the school zoned to Portlethen Academy, a large number of pupils travel out of the zone.

The Councillor advised that North Kincardine Community Council (NKRCC) was regarded as a model for others to follow. It was inappropriate to include 'Lower Deeside' in a ward name whilst excluding the lower reaches of the Dee from the ward.

The most striking feature of our proposals, Councillor Wallace stated, was the extent to which the projected ward electorates adhered to parity even though the Commission rejected claims earlier in the review that there was no 5% target for urban wards and 10% target for rural wards. He questioned the accuracy of the projected electorate for the Portlethen because new developments were likely to exceed figures used in our provisional proposals.

Community Councils

North Kincardine Rural Community Council (NKRCC) suggested that like-minded rural communities should be kept together in order to have enough electorate to be able to influence the elected members of their ward. It preferred that its area be amalgamated with other rural areas to the west. Should this not produce sufficient electorate then polling districts WW621 (Netherley/Cookney), WW583 (Maryculter) and WW584 (Banchory-Devenick) should be incorporated into Ward 18.

Netherley/Cookney residents did not associate with the coastal electorate of Portlethen/Newtonhill but did have some association with Stonehaven through schooling and use of the local facilities. Councillors representing the other NKRCC areas voted unanimously to lobby for amalgamation with Netherley/Cookney and Stonehaven rather than Portlethen.

Portlethen was expanding, and the forecast addition to the number of houses along the coastal strip was greater than the existing stock in the entire NKRCC area. Any loss of numbers through the separation of the NKRCC area from Portlethen would be recovered through new development.

The proposed western boundary of Ward 17 did not match that of the existing polling district boundary or that of the Community Council. It requested that this be rectified.

Strathbogie Community Council considered that the proposal for the Huntly, Strathbogie and Howe of Alford (Ward 14) was unworkable because in such an extensive area councillors would be remote from many constituents. Further, the proposed ward crossed Westminster and Holyrood boundaries and this confusion would result in fewer people voting. A better option would be to create a 3-member ward that included the existing Huntly East, Huntly West and Strathbogie wards.

Political Parties

The Buchan Scottish Socialist Party Branch objected to the division of Peterhead. The overwhelming view in the town supported a 4-member ward that included as much of the town as possible. The Branch considered that electors in the rural area to the north of Peterhead had little in common with those in the built up area; and they had more in common with the rural area to the south of Peterhead. Combining the rural area to the north with the northern part of Peterhead might result in all 4 councillors elected being resident in Peterhead, thereby leaving the rural area to the north feeling totally un-represented.

The Dee and Don Labour Party Branch expressed concern that 3 of 4 wards within its area would have 3-members. In its view this would discriminate against effective representation, which was the main aim of the reform of the local government electoral system. The Branch urged the Commission to bring together parts of Mid Deeside and Upper Deeside, and other parts of Mid Deeside with Westhill and East Garioch, in order to create equitable 4 (or more) member wards.

Other Organisations

Hatton Area Residents Association was against any proposals that would divide Cruden Bay and Hatton. These communities had close bonds; the Residents Associations in both villages had close working relationships; many households had families in both villages; and the villages shared the same doctor's surgery, chemist and banking facilities. Many elderly relatives of Hatton families lived in the care home or sheltered housing complex in Cruden Bay; and the Community Council that served both Hatton and Cruden Bay had members from both villages. The Association supported the changes proposed by Aberdeenshire Council, which it believed made much more sense.

Members of the Public

A letter advised that the rural Dunnottar part of polling district WK652 had about 280 electors, the Stonehaven part had about 750 electors and under our proposals all 1,030 were included in Ward 18. However, rural Dunnottar was a farming area within Catterline, Kinneff and Dunnottar Community Council and was within the existing Mearns North ward, an arrangement which worked well. Rural Dunnottar had no leanings towards urban Stonehaven.

In support of the contention it was noted that Catterline, Kinneff and Dunnottar formed one community, Catterline Womens Rural Institute served Dunnottar, and Kinneff Young Farmers Club drew members from Catterline and Dunnottar and that other indicators of community links existed. Dunnottar rural sat more comfortably with Kinneff and Catterline in geographical, social and occupational terms, and in the sort of topics that arose at Community Council meetings. If possible rural Dunnottar should be located entirely in Ward 19 rather than Ward 18.

Consideration of Representations

28. We noted that Aberdeenshire Council accepted all but 3 of the 19 wards that we proposed. We confirmed with our Secretariat that it had consulted officials to identify suitable boundaries at Inverurie and Kintore and that the agreed boundary had been incorporated into our provisional proposals.

29. The Council, Hatton Area Residents' Association and the Buchan Branch of the Scottish Socialist Party had requested that the proposals for the Buchan/Peterhead area (Wards 4–6) as set out by the Council at the start of the review, be incorporated in our final recommendations.

30. We re-examined both structures and concluded that, bearing in mind the combined geography of the 3 wards, our proposals for Wards 4, 5 and 6 offered a balanced solution. No new substantive information had been brought to our attention which would justify the amendments proposed. We noted also that no substantial body of evidence had arisen from the public consultation process that would lead us to modify our proposals. Accordingly, we were not persuaded to amend our provisional proposals.

31. We considered the representation from Hatton Area Residents' Association's and agreed that our proposals should be amended to incorporate Hatton with Cruden Bay in Ward 6.

32. We examined Mike Rumbles MSP's representation seeking amendment to our proposals for Wards 16 and 18. We noted that effecting the change requested would significantly increase the

divergence from parity in both wards, which could not be justified within the terms of the statutory rules. We further noted that our proposals were closely aligned with those submitted by the Council. Accordingly, we were not persuaded that our provisional proposals should be modified.

33. We considered Councillor Wallace's and North Kincardine Rural Community Council's representations objecting to our proposals and seeking amendment to Wards 17 and 18 which would result in Maryculter, Cookney and Netherley being included within Ward 18. We also considered their preference for the rural part of Banchory-Devenick to be transferred to Ward 18. While we were sympathetic to the range of arguments presented, we noted that we were bound to consider them within the constraints placed upon us by the statutory rules. In particular, it was not always possible to identify ward boundaries which would be coterminous with others and which had been devised to serve other purposes including, for example, Community Council areas or school catchments. With regard to future electorates, as required by the statutory rules, our proposals included information provided by the Council in respect of new-build that was expected to be completed by 2009.

34. In considering the representations, it was clear that it would not be possible to reduce the level of representation in Ward 17 from 4 to 3. It was adjacent to Ward 18 which was proposed to return 4 members. A transfer of electorate to that ward would raise its allocation to the equivalent of a 5 member ward. However, there was no provision within the statutory rules for us to make recommendations for a ward which returned 5 members. Further, the amendments requested significantly increased the divergence from parity in Wards 17 and 18 to an extent which was unacceptable within the terms of the statutory rules. We concluded that neither of the amendments could be accommodated without substantially re-designing wards over an extended area. We also noted that our proposals for the area were closely aligned to those submitted by the Council.

35. Bearing these factors in mind, we were unable to amend our proposals for Wards 17 and 18 as requested. Further, we were not persuaded by the evidence offered that we should make substantial and wide-ranging changes to areas of our proposals that had been subject to public consultation without attracting any substantial volume of objections. We concluded also that aligning the boundary of Ward 17 with those of existing polling districts or community councils did not improve upon the lines we had determined.

36. We noted the comments regarding the inclusion of 'Lower Deeside' in the name of Ward 18 and confirmed our general policy of adopting the ward names suggested by the Council.

37. We examined Strathbogie Community Council's representation and noted that, compared to rural wards elsewhere in Scotland, the geographical size of Ward 14 was not excessive. Accordingly, we agreed not to amend our proposals.

38. We considered the representation from a member of the public seeking the transfer of rural Dunnottar from Ward 19 to Ward 18. We noted that in order to comply with the request it would be necessary to realign the southern boundary of Ward 18 substantially closer to Stonehaven. In line with proposals elsewhere in the Council area, our proposals for this area sought to associate settlements and small communities with larger communities which would be a source of service provision. No substantial body of evidence had arisen from our public consultation that supported a re-design of ward boundaries of the area around Stonehaven. Accordingly, we agreed that our provisional proposals should not be amended.

Part 3 Final Recommendation

1. Having conducted the fourth statutory review of electoral arrangements for Aberdeenshire Council area in accordance with the procedures described in Parts 1 and 2 above, we recommend that future electoral arrangements for the said Council area should provide for a Council of 68 elected members in 8 wards each returning 3 members and in 11 wards each returning 4 members as follows:

Ward		Forecast Electorate	Number of Elected Members	Average Electorate per Member	Divergence from Parity(%)
Number a	Name b				
1	Banff and District	8,860	3	2,953	7
2	Troup	7,450	3	2,483	-10
3	Fraserburgh and District	11,330	4	2,833	3
4	Central Buchan	10,090	4	2,523	-8
5	Peterhead North and Rattray	10,730	4	2,683	-3
6	Peterhead South and Cruden	8,920	3	2,973	8
7	Turriff and District	8,630	3	2,877	4
8	Mid Formartine	11,400	4	2,850	4
9	Ellon and District	11,260	4	2,815	2
10	West Garioch	8,230	3	2,743	0
11	Inverurie and District	10,450	4	2,613	-5
12	East Garioch	8,670	3	2,890	5
13	Westhill and District	11,050	4	2,763	0
14	Huntly, Strathbogie and Howe of Alford	11,510	4	2,878	5
15	Aboyne, Upper Deeside and Donside	8,650	3	2,883	5
16	Banchory and Mid Deeside	8,310	3	2,770	1
17	North Kincardine	10,350	4	2,588	-6
18	Stonehaven and Lower Deeside	10,790	4	2,698	-2
19	Mearns	10,510	4	2,628	-5

2. The boundaries of the proposed electoral wards are described in the form of digital data as set out at Part 1 paragraph 22 of our report. These data files, which have been securely stored on magnetic media at the date of publication of our report, comprise GIS files in shapefile format containing the features copied from the OS MasterMap®, large-scale digital data as supplied to us at July 2004. A full copy of the OS MasterMap®, Topography Layer, the Aberdeenshire Council area boundary depicted in the Administrative Boundaries theme and the low water mark ordinary springs large-scale digital data (prepared on our behalf by OS from its large-scale digital information) has similarly been secured on magnetic media. These secured data files ensure that the proposed ward boundary polyline shapefiles data can be verified against the July 2004 version of the large-scale base mapping from which the proposed ward boundaries are derived.

3. A statutory notice, detailing where our report has been deposited for inspection was published in the Press & Journal. A news release announcing the publication of our report was also issued.

4. Maps at the print size and scale set out below have also been deposited for public inspection at the locations set out in the statutory notice:

- Aberdeenshire Council area A0 scale 1:150,000
- Peterhead and surrounding area A2 scale 1:25,000

5. Our report and the maps detailing the recommended ward boundaries, together with individual maps of each of the recommended wards, are available on our web site at www.lgbc-scotland.gov.uk and can be viewed or downloaded free of charge within the constraints imposed by Crown copyright.

Appendices

- Appendix A Extract from Local Governance (Scotland) Act 2004
- Appendix B Direction Under Section 18(2A) of The Local Government (Scotland) Act 1973
- Appendix C Direction Under Section 18(2A) of The Local Government (Scotland) Act 1973
- Appendix D Local Government (Scotland) Act 1973, as amended
Schedule 6 – Rules to be observed in considering electoral arrangements
- Appendix E Review Timetable
- Appendix F Illustrative Maps

Appendix A

Extract from Local Governance (Scotland) Act 2004

4 Reviews of electoral arrangements

- (1) As soon as practicable after the commencement of this section the Boundary Commission shall-
 - (a) review the electoral arrangements for all local government areas for the purpose of considering future electoral arrangements for those areas, and
 - (b) formulate proposals for those arrangements.
- (2) Part II of the 1973 Act applies to a review under subsection (1) as it applies to a review under section 16 of that Act except that section 17 of that Act has effect as if it required-
 - (a) the Boundary Commission to submit a report on any review before such date as the Scottish Ministers may direct, and
 - (b) the Scottish Ministers to make an order under section 17 giving effect to the proposals of the Commission under subsection (1) (whether as submitted to them or with modifications).
- (3) The Boundary Commission shall, when complying with section 18(2)(aa) of the 1973 Act on a review under subsection (1), also inform the council of the reasons for any differences between-
 - (a) their draft proposals, and
 - (b) the draft proposals which would have been made had they been formulated on the basis that each electoral ward of a local government area is to consist of a combination of existing electoral wards (the rules set out in Schedule 6 to that Act having been disregarded in so far as those rules conflicted with that basis).
- (4) The Boundary Commission shall disregard subsection (3) when formulating proposals for future electoral arrangements under subsection (1).
- (5) The 1973 Act is amended as follows-
 - (a) in section 16(2) (duty of Boundary Commission to carry out periodic reviews of electoral arrangements), for “Schedule 5 to this Act” substitute “section 4(1) of the Local Governance (Scotland) Act 2004 (asp 9)”,
 - (b) in section 18 (procedure for reviews)-
 - (i) in subsection (2), after paragraph (a) insert-

- “(aa) at least two months before taking any steps under paragraph (b) below to inform other persons of any draft proposals or any interim decision not to make proposals, inform the council of any local government area affected by the review of those proposals or that decision;
- (ab) before taking any such steps, take into consideration any representation made to them by such a council during the period of two months beginning on the day on which the council is informed under paragraph (aa);”,
- (ii) after subsection (2) insert-
 - “(2A) The Scottish Ministers may give directions to-
 - (a) the Boundary Commission,
 - (b) the council of any local government area affected by a review, in relation to consultation under subsection (2)(a) above.
 - (2B) Such directions may be given generally or in relation to particular reviews or particular aspects of reviews.”,
- (c) section 20 is repealed,
- (d) in subsection (1) (interpretation) of section 28, in the definition of “electoral arrangements”, after “councillors”, where second occurring, insert “, the number of councillors for each electoral ward”,
- (e) in subsection (2) (review of electoral arrangements to be carried out in compliance with certain enactments) of that section-
 - (i) after “Act”, where first occurring, insert “or section 4(1) of the Local Governance (Scotland) Act 2004 (asp 9)”, and
 - (ii) for “section 5 of the Local Government etc. (Scotland) Act 1994” substitute “section 1 of the Local Governance (Scotland) Act 2004 (asp 9)”,
- (f) Schedule 5 is repealed,
- (g) in sub-paragraph (2) of paragraph 1 of Schedule 6, for the words from “of”, where fourth occurring, to the end of that sub-paragraph substitute “calculated by dividing the number of local government electors in each electoral ward of that local government area by the number of councillors to be returned in that ward shall be, as nearly as may be, the same.”, and
- (h) at the end of sub-paragraph (3) of that paragraph insert-

“but if, in any case, there is a conflict between those criteria, greater weight shall be given to the latter.”

Appendix B

DIRECTION UNDER SECTION 18(2A) OF THE LOCAL GOVERNMENT (SCOTLAND) ACT 1973

1. The Scottish Ministers, in exercise of the powers conferred by section 18(2A) and (2B) of the Local Government (Scotland) Act 1973 (“the Act”), and of all other powers enabling them in that behalf, hereby give the following directions to the Local Government Boundary Commission for Scotland (“the Commission”).
2. These directions apply in relation to any consultation carried out by the Commission, in accordance with section 18(2)(a) of the Act, with the council of any local government area affected by a review under Part II of the Act (“the council”).
3. In carrying out any such consultation, the Commission shall comply with the requirements set out in paragraphs 4 to 12 below.

Information to be provided by the Commission

4. The Commission shall, within 14 days of the date of this Direction, inform the council in writing, by letter, by recorded delivery, addressed to the Chief Executive of that council of the following–
 - (a) the timetable proposed by the Commission for that consultation;
 - (b) the timetable proposed by the Commission for the review to be conducted by the Commission under section 4(1) of the Local Governance (Scotland) Act 2004;
 - (c) the general approach the Commission proposes to adopt in formulating its proposals for ward boundaries;
 - (d) the information the Commission would like to have available to use in formulating those proposals;
 - (e) the assistance which that council would be asked to render to the Commission in the process of the review; and
 - (f) such other matters as the Commission considers appropriate.

Process of consultation with the council

General

5. The Commission shall take all reasonable steps to establish and maintain an ongoing dialogue with the council for the purposes of the review. That dialogue may be conducted in person, orally, in writing or otherwise.

6. In the course of the consultation, the Commission shall encourage the council-
 - (a) to establish, and communicate to the Commission, any proposals or ideas that the council may have in relation to new ward boundaries, or otherwise in relation to the formulation of the Commission's proposals; and
 - (b) to provide such factual information held by the council as the Commission or the council think relevant in relation to the formulation of the Commission's proposals.

Meeting with the council

7. Subject to paragraph 9, the Commission shall meet with the council no later than twelve weeks after the date of the letter sent in terms of paragraph 4.
8.
 - (1) The Commission shall propose to the council 2 dates, and the times on those dates, on which that meeting might take place.
 - (2) Where the council indicates that those proposals are unsuitable then the Commission shall offer 2 further dates, and the times on these dates, on which the meeting might take place.
 - (3) All of the dates and times proposed by the Commission under this paragraph shall be within the ordinary working hours of the council.
 - (4) Nothing in this paragraph shall prevent the Commission and the council meeting at any time which is not within the ordinary working hours of the council where the Commission and the council so agree.
9. The Commission is not required to meet with the council where-
 - (a) the council indicates that it does not wish to meet the Commission; or
 - (b) the council fails to respond to any proposal made under
 - (i) paragraph 8(1), during the period of 14 calendar days beginning with the day on which the council received that proposal; or
 - (ii) paragraph 8(2), during the period of 7 calendar days beginning with the day on which the council received that proposal.

Formal written views of the council

10.
 - (1) The Commission shall take all reasonable steps to ensure that they have received the concluded view of the council in writing on the matters raised in the consultation by no later than-
 - (a) the end of the period of four weeks beginning with the date of any meeting held in accordance with paragraph 7; or

- (b) in the event that, in terms of paragraph 9, no meeting took place between the Commission and the council, the end of the period of four weeks beginning with -
 - (i) the date on which the council indicated that it did not wish to meet the Commission; or
 - (ii) the date on which the period referred to in paragraph 9(b)(i), or if applicable, 9(b)(ii) ends,whichever may apply.

- (2) Where the Commission have not received the concluded view referred to in sub-paragraph (1), within the timescale provided for in that sub-paragraph, the Commission may disregard any conflict in the views that have been expressed by, or purportedly by, the council where, in the opinion of the Commission, those views conflict.

11. Where the Commission is of the opinion that it has not received the concluded view of the council it shall notify the council of that fact no fewer than 7 calendar days before the end of the consultation.

12. For the purposes of these directions, the Commission shall assume that a view expressed as being the concluded view of the council is the concluded view of the council if that view is expressed in a letter from the Chief Executive of the council to the Commission.

Andrew P Kerr

A member of the Scottish Executive

Edinburgh
30th August 2004

Appendix C

DIRECTION UNDER SECTION 18(2A) OF THE LOCAL GOVERNMENT (SCOTLAND) ACT 1973

1. The Scottish Ministers, in exercise of the powers conferred by section 18(2A) and (2B) of the Local Government (Scotland) Act 1973 (“the Act”), and of all other powers enabling them in that behalf, hereby give the following directions.
2. These directions apply in relation to any consultation carried out by the Local Government Boundary Commission for Scotland (“the Commission”), in accordance with section 18(2)(a) of the Act, with the council of any local government area affected by a review under Part II of the Act (“the council”).
3. In taking part in such a consultation, the council shall comply with the requirements set out in paragraph 4 below.
4. For the purposes of enabling the Commission to exercise the functions conferred upon them by virtue of section 18(2)(a) of the Act, as read with the Scottish Ministers’ direction to the Commission dated 30th August 2004, the Council shall co-operate with the Commission and shall in particular:-
 - (a) establish and maintain an ongoing dialogue which, where appropriate, may include meeting with the Commission;
 - (b) take all reasonable steps to ensure that any views expressed, or purporting to be expressed, by it or on its behalf to the Commission are accurate;
 - (c) provide the Commission with all such information as the Commission may reasonably request; and
 - (d) provide the Commission with all such information as the Council considers relevant, including any proposals or ideas the Council may have, in relation to new ward boundaries, or otherwise in relation to the formulation of the Commission’s proposals.

Andrew P Kerr

A member of the Scottish Executive

Edinburgh
30 August 2004

Appendix D

Local Government (Scotland) Act 1973, as amended Schedule 6 – Rules to be observed in considering electoral arrangements

1. (1) This schedule applies to the consideration by Scottish Ministers or the Boundary Commission of electoral arrangements for election of councillors of local government areas.
 - (2) Having regard to any change in the number or distribution of electors of a local government area likely to take place within the period of five years immediately following the consideration, the number calculated by dividing the number of local government electors in each electoral ward of that local government area by the number of councillors to be returned in that ward shall be, as nearly as may be, the same.
 - (3) Subject to sub-paragraph (2) above, in considering the electoral arrangements referred to in sub-paragraph (1) above regard shall be had to-
 - (a) the desirability of fixing boundaries which are and will remain easily identifiable;
 - (b) any local ties which would be broken by the fixing of any particular boundary but if, in any case, there is a conflict between those criteria, greater weight shall be given to the latter.
2. The strict application of the rule stated in paragraph 1(2) above may be departed from in any area where special geographical conditions appear to render a departure desirable.

Appendix E

Review Timetable

Stage 1: Initial consultation with Councils and the early establishment of an ongoing dialogue between the Commission and Councils for the purpose of the Review.

Councils are given full opportunity to communicate to the Commission any proposals or ideas that they may have in relation to the design of new wards. The Commission outlines the methodology underlying its intended approach to the Review.

Clarification of general review issues, both technical and administrative. Exchange of factual information between the Commission and Councils relevant to the design of proposed wards.

Discussion/exchange of information for any areas of concern.

12 weeks

Stage 2: Development of initial proposals by the Commission for each Council area with ongoing consultation between the Commission and Councils as necessary on emerging issues.

Preparation of maps, supporting documentation and GIS files of proposed ward boundaries for Councils once the Commission has completed drafting its initial ward schemes.

10 weeks

Stage 3: Initial proposals released to Councils. Two months allowed for the Council to comment on proposals, offer amendments and or alternatives. Further discussions with Council as required throughout this stage to clarify emerging issues relating to the initial proposals.

9 weeks (2 months)

Stage 4: Full consideration by the Commission of issues arising through stage 3 which might lead to revision/adjustment of initial proposals. Further liaison with Councils taken forward on a needs basis

8 weeks

Stage 5: Publication of the Commission's provisional proposals as part of the statutory public consultation process. Analysis of representations received. Seek Council views on aspects of representations and the impact they have on the provisional proposals as required.

12 weeks

Stage 6: Full analysis of representations received by the Commission.

Commission determines where a need has arisen for local inquiries, organises and conducts inquiries and reviews its provisional recommendations in light of inquiry reports.

Publication of revised recommendations where the Commission makes significant changes to its provisional proposals.

Consider representations received within 1 month.

Move to final recommendations where possible.

20 weeks

Stage 7: Complete final recommendations for all Council areas.

Complete review process, write and submit reports.

Appendix F

Illustrative Maps

Ward 1 – Banff and District

Ward 2 – Troup

Ward 3 – Fraserburgh and District

Ward 4 – Central Buchan

Ward 5 – Peterhead North and Rattray

Ward 6 – Peterhead South and Cruden

Ward 7 – Turriff and District

Ward 8 – Mid Formartine

Ward 9 – Ellon and District

Ward 10 – West Garioch

Ward 11 – Inverurie and District

Ward 12 – East Garioch

Ward 13 – Westhill and District

Ward 14 – Huntly, Strathbogie and Howe of Alford

Ward 15 – Aboyne, Upper Deeside and Donside

Ward 16 – Banchory and Mid Deeside

Ward 17 – North Kincardine

Ward 18 – Stonehaven and Lower Deeside

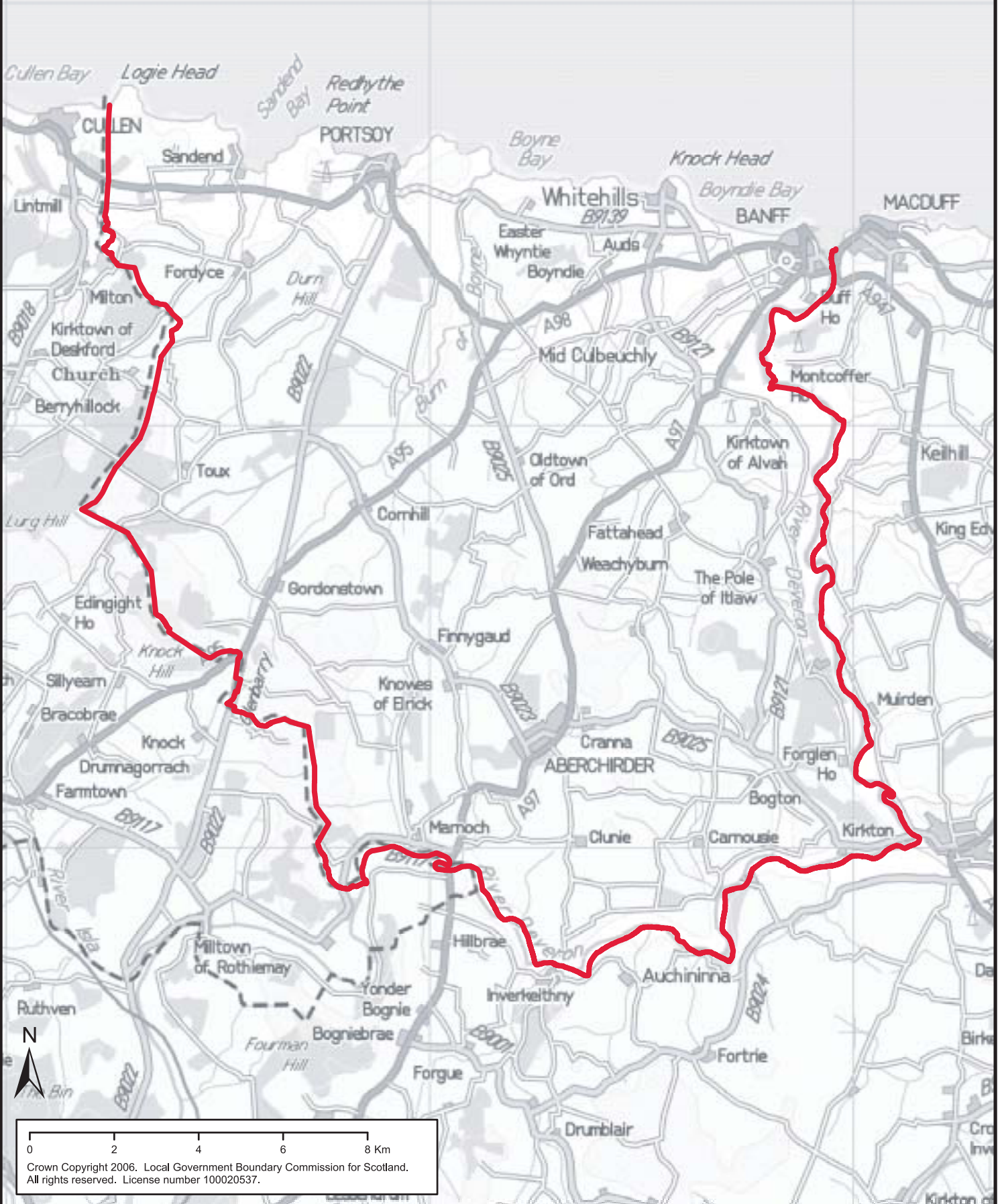
Ward 19 – Mearns

Local Government Boundary Commission for Scotland

Aberdeenshire Council area

Ward 1 - Banff and District

3 elected members

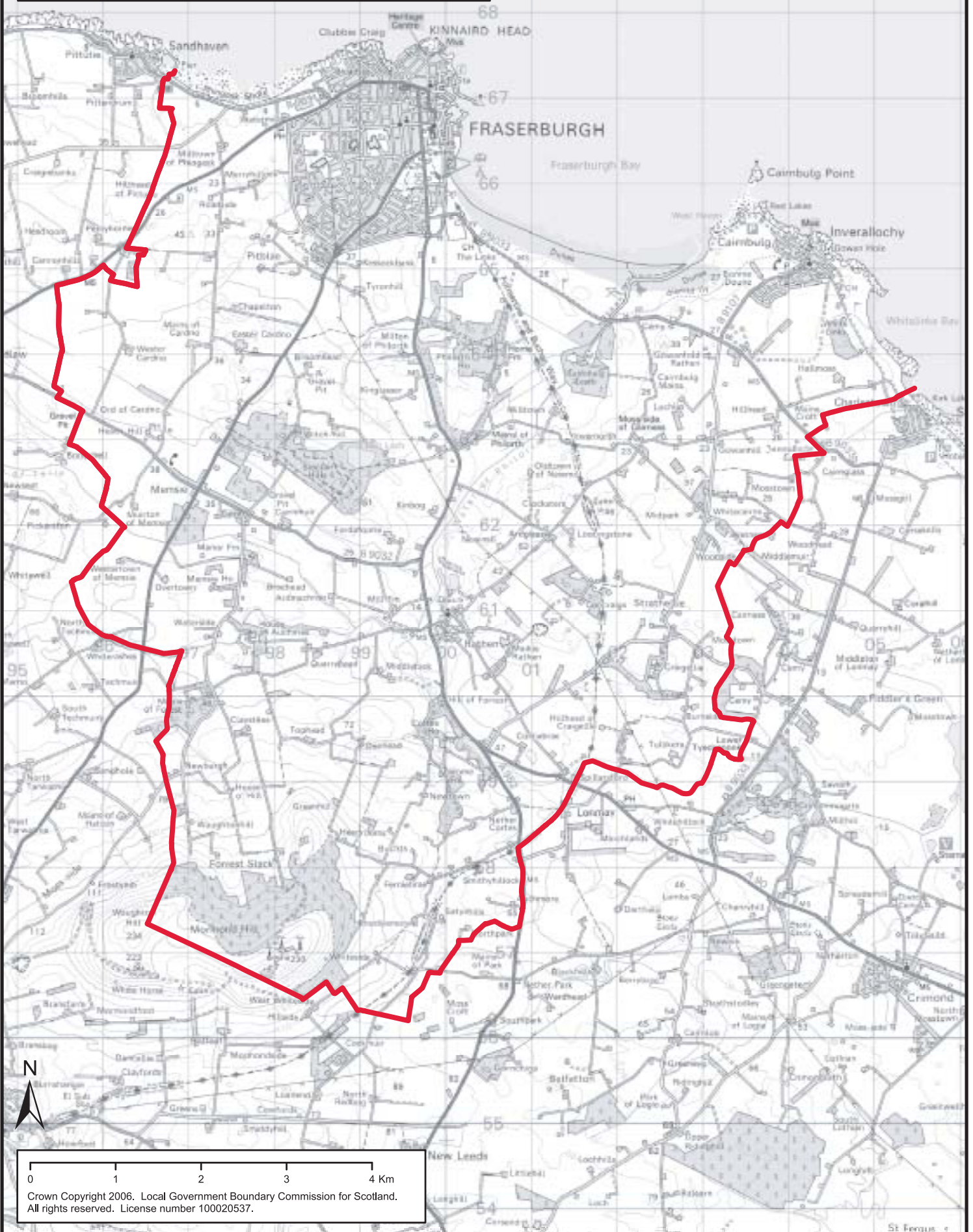


Local Government Boundary Commission for Scotland

Aberdeenshire Council area

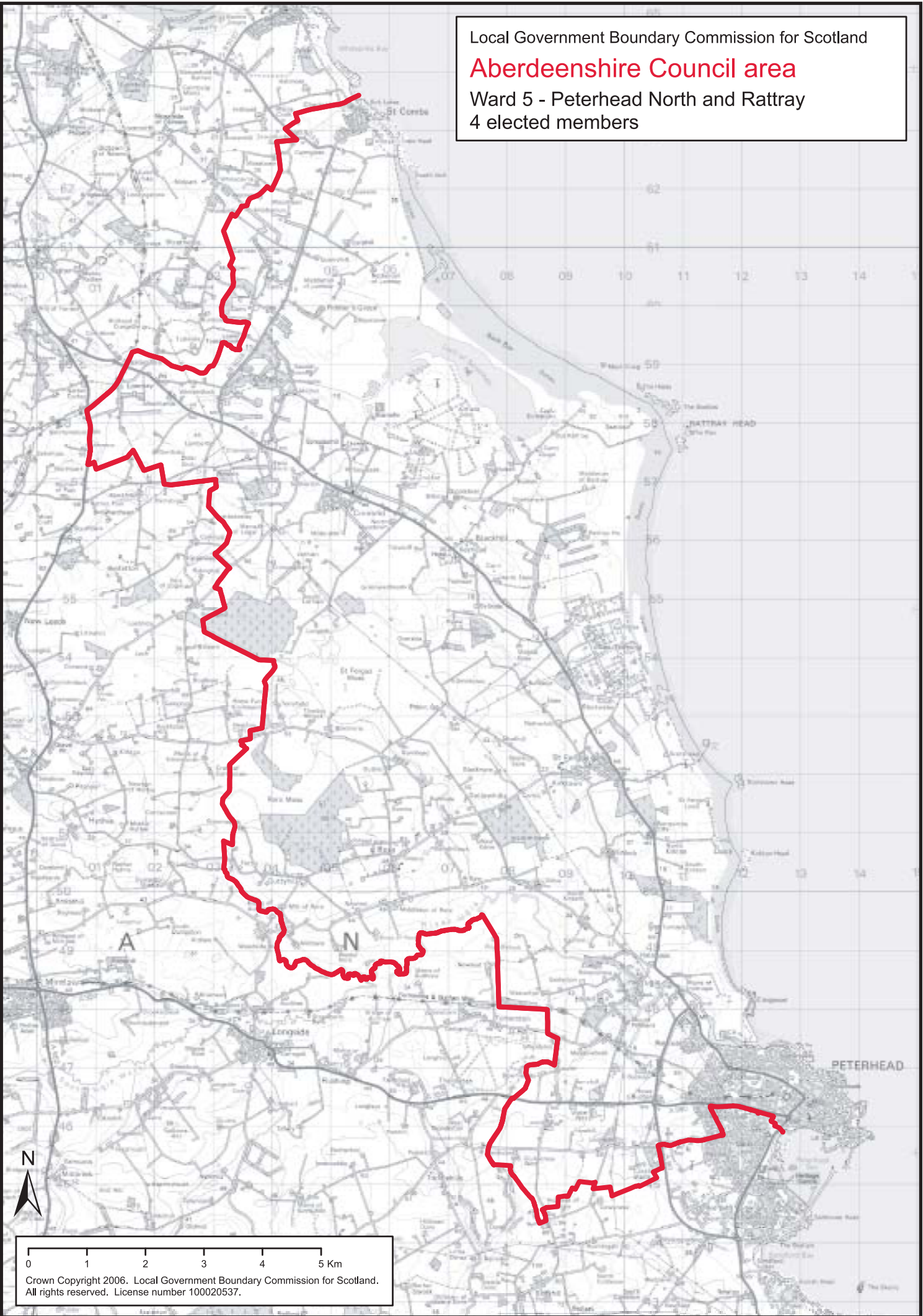
Ward 3 - Fraserburgh and District

4 elected members



Crown Copyright 2006. Local Government Boundary Commission for Scotland.
All rights reserved. License number 10020537.

Local Government Boundary Commission for Scotland
Aberdeenshire Council area
Ward 5 - Peterhead North and Rattray
4 elected members



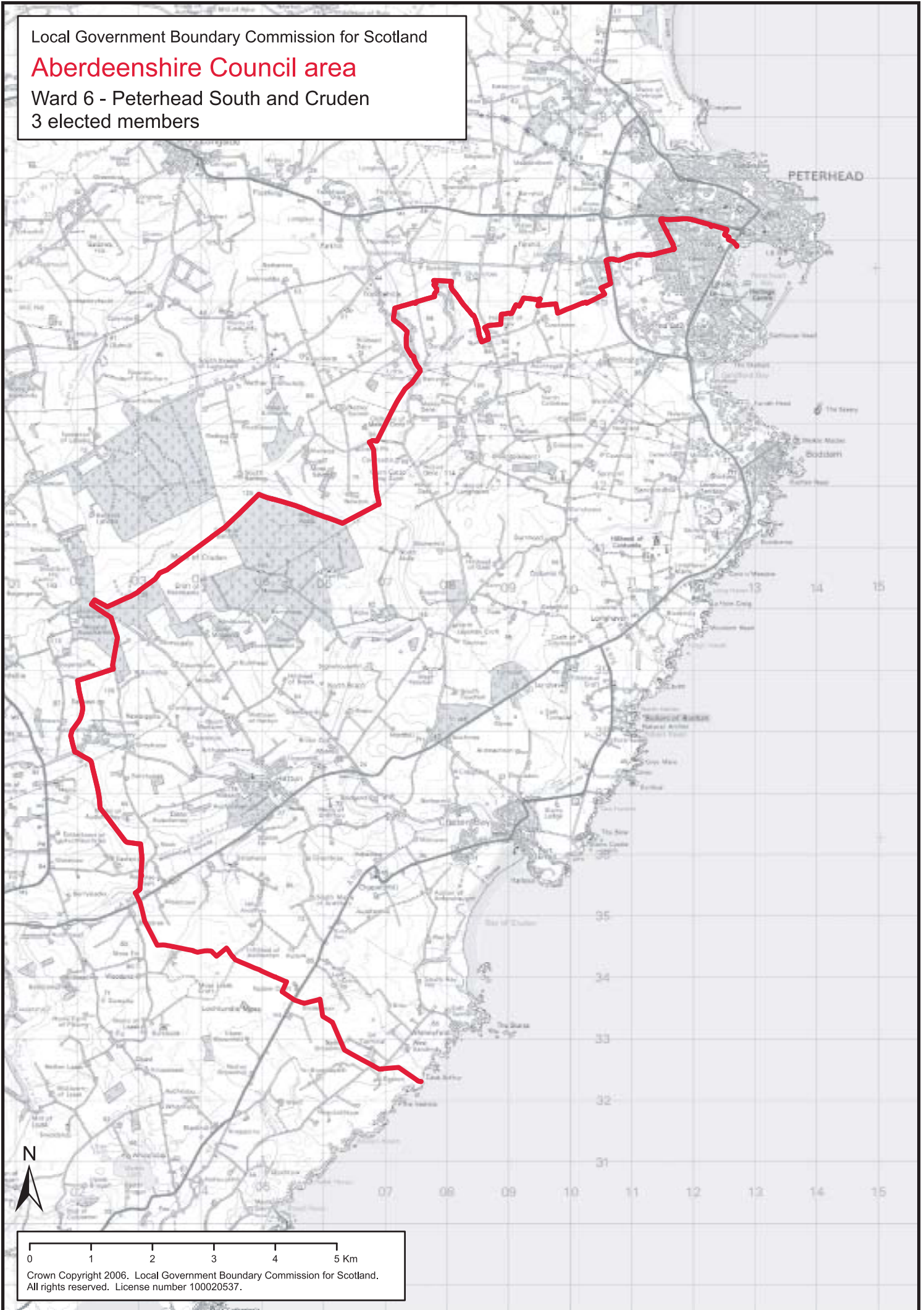
Crown Copyright 2006. Local Government Boundary Commission for Scotland.
All rights reserved. License number 100020537.

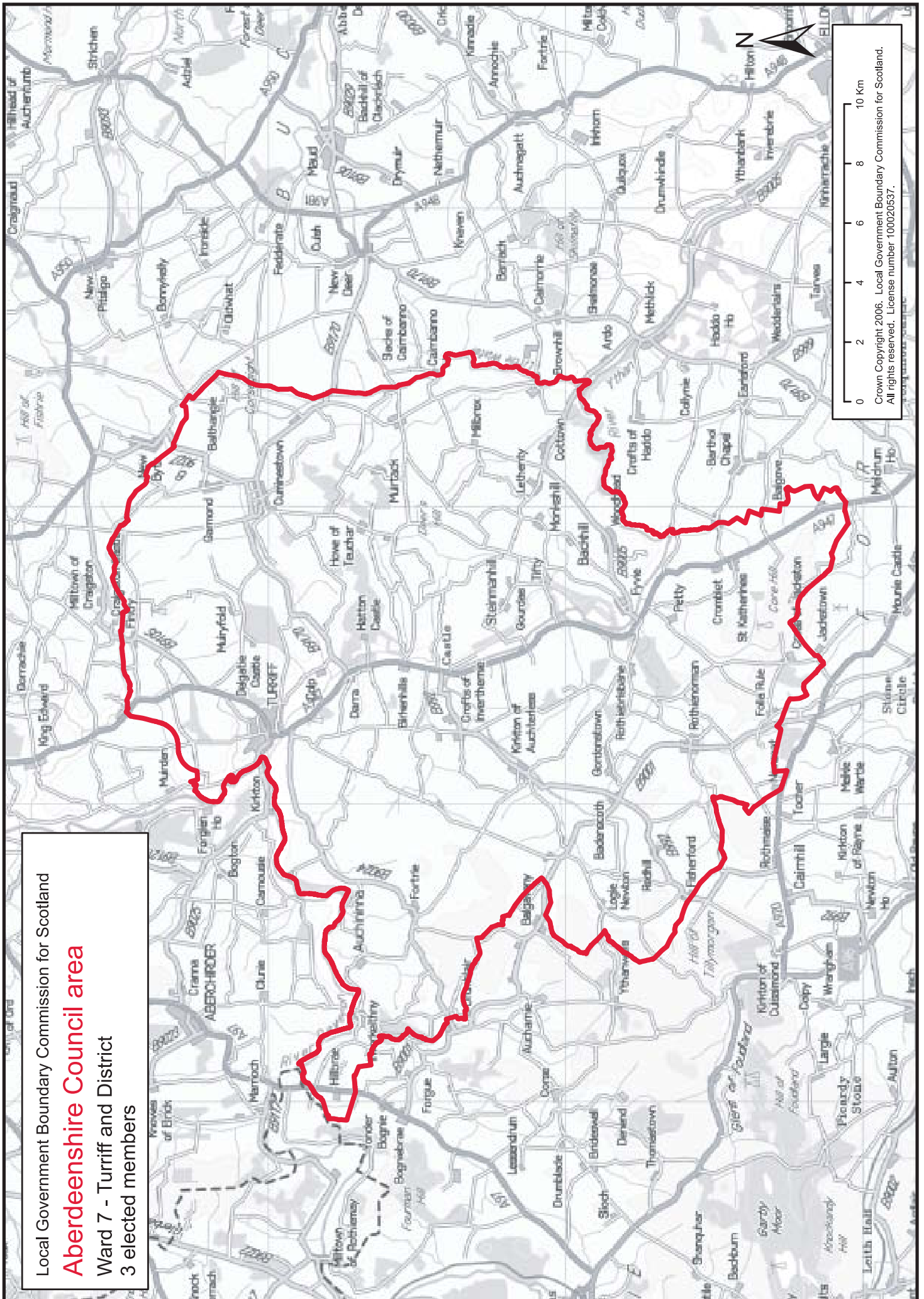
Local Government Boundary Commission for Scotland

Aberdeenshire Council area

Ward 6 - Peterhead South and Cruden

3 elected members



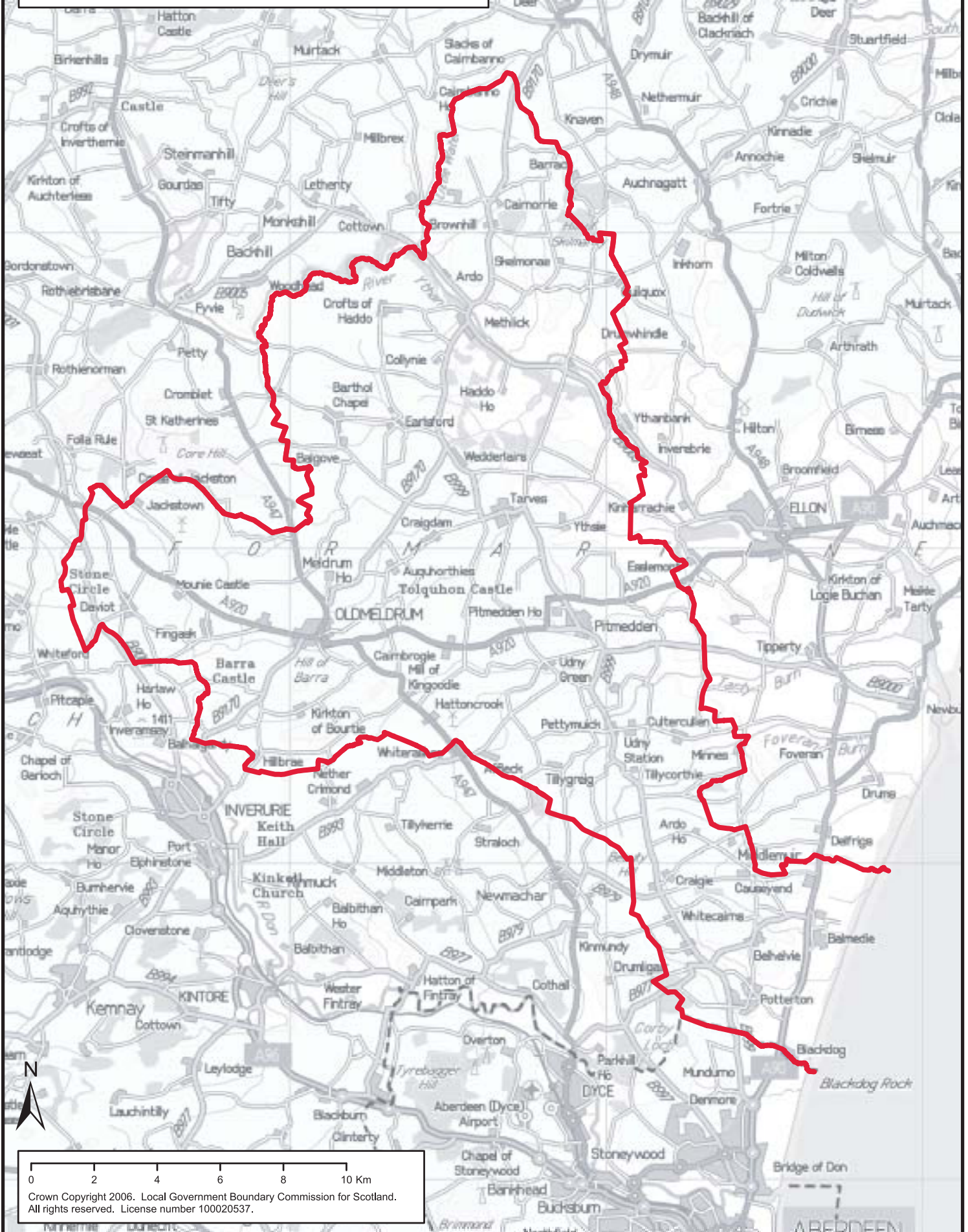


Local Government Boundary Commission for Scotland

Aberdeenshire Council area

Ward 8 - Mid Formartine

4 elected members



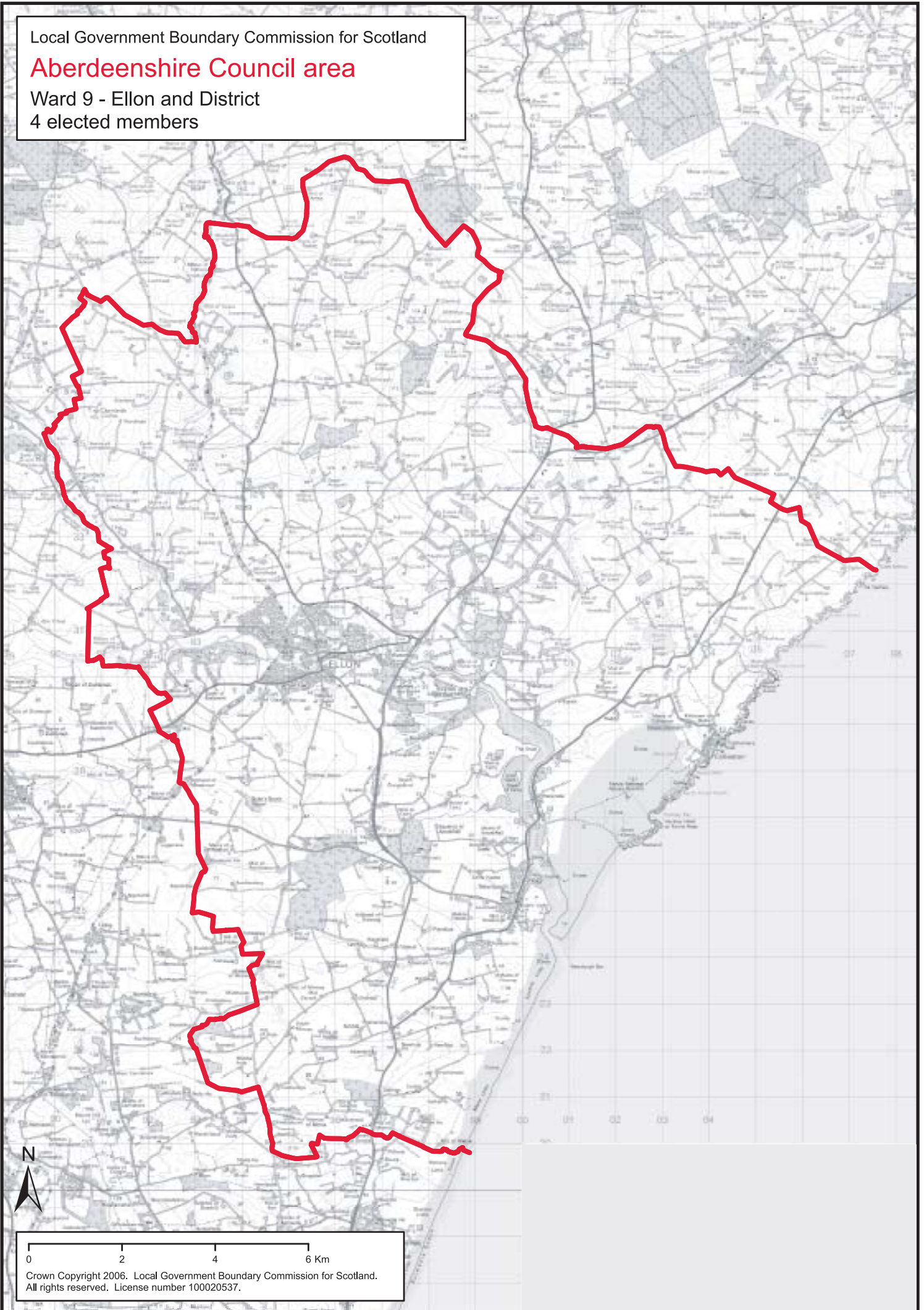
Crown Copyright 2006. Local Government Boundary Commission for Scotland. All rights reserved. License number 100020537.

Local Government Boundary Commission for Scotland

Aberdeenshire Council area

Ward 9 - Ellon and District

4 elected members



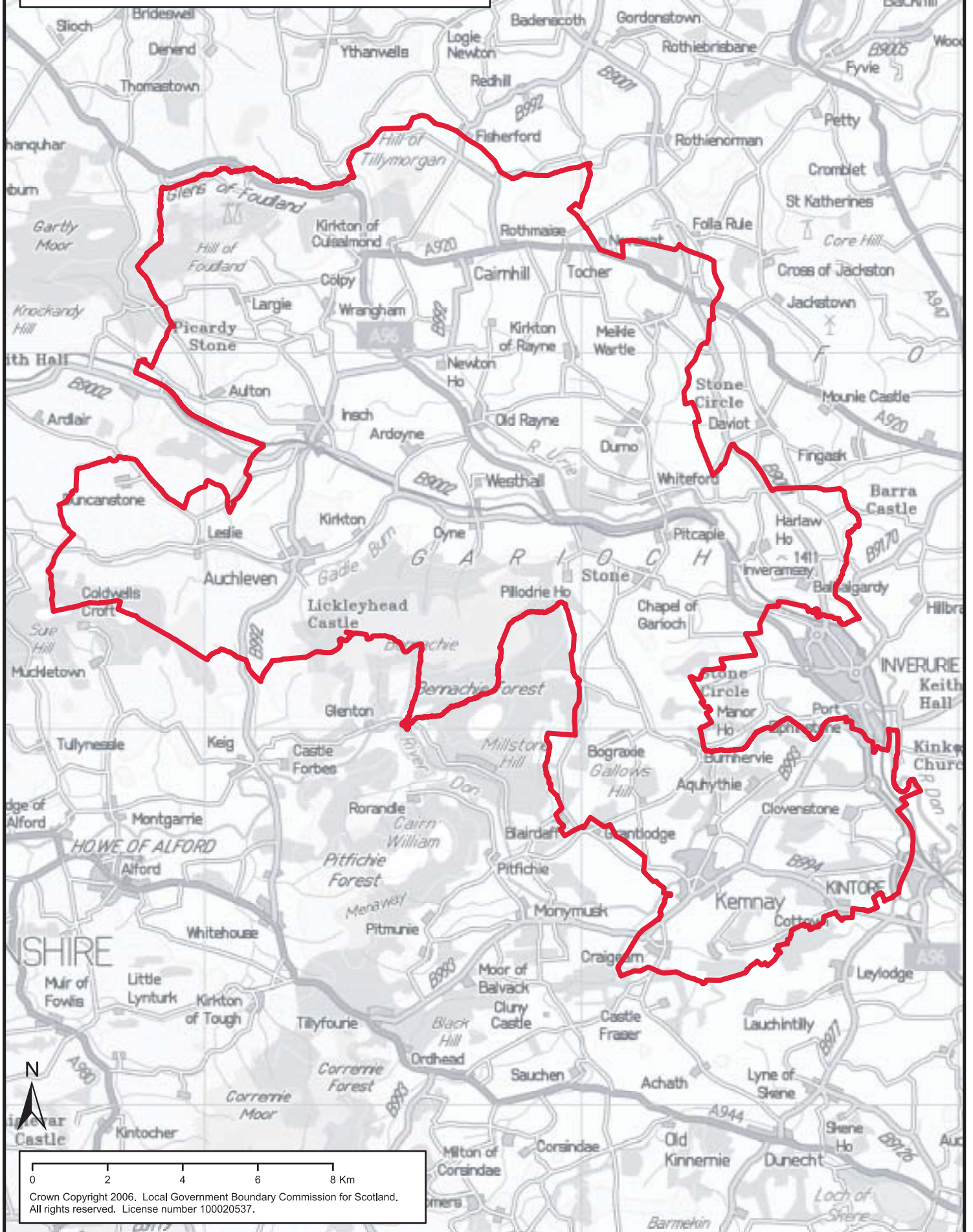
Crown Copyright 2006. Local Government Boundary Commission for Scotland.
All rights reserved. License number 100020537.

Local Government Boundary Commission for Scotland

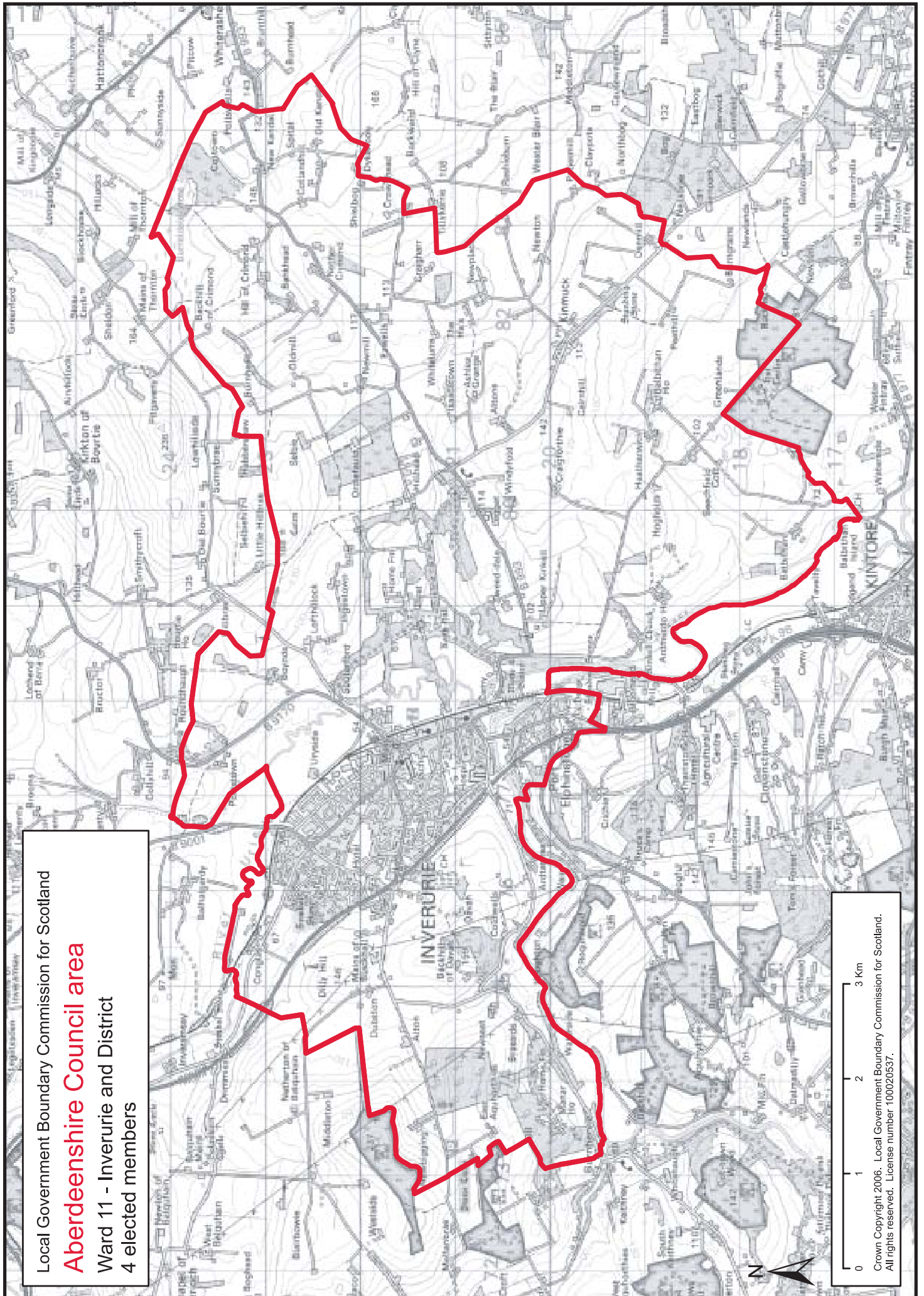
Aberdeenshire Council area

Ward 10 - West Garioch

3 elected members

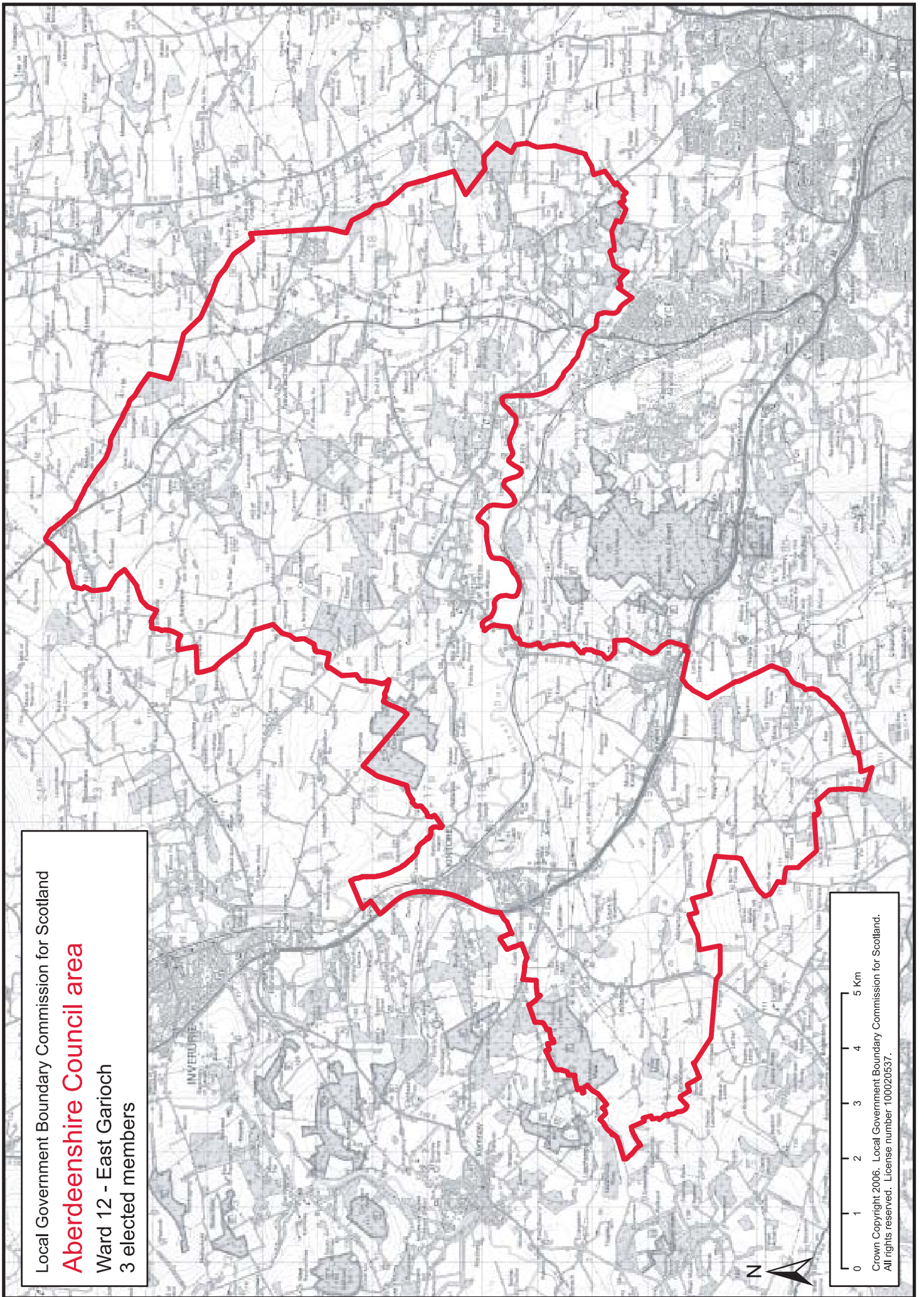


Crown Copyright 2006. Local Government Boundary Commission for Scotland. All rights reserved. License number 100020537.



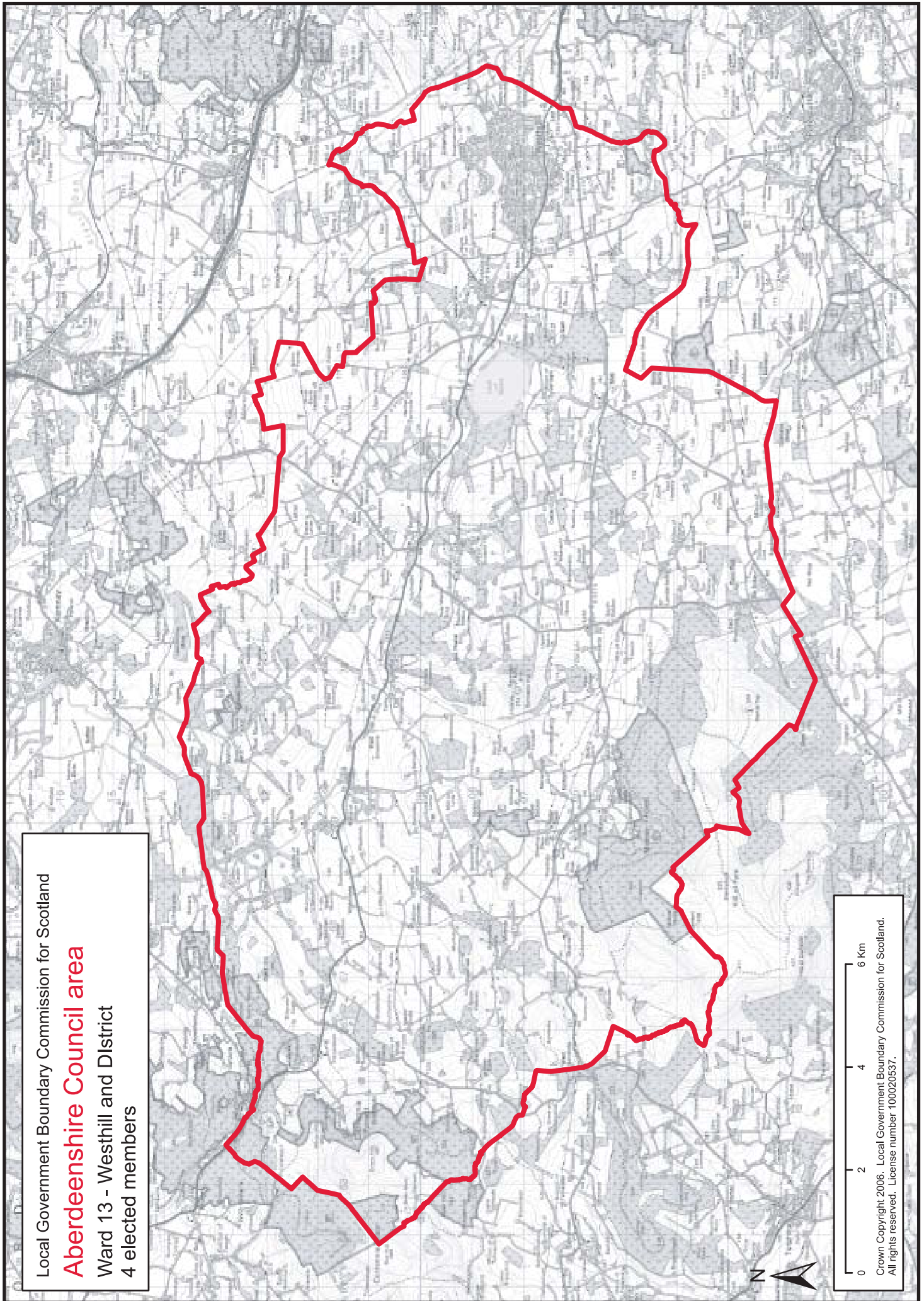
Local Government Boundary Commission for Scotland
Aberdeenshire Council area
 Ward 11 - Inverurie and District
 4 elected members

0 1 2 3 Km
 Crown Copyright 2006. Local Government Boundary Commission for Scotland.
 All rights reserved. License number 100020537.



Local Government Boundary Commission for Scotland
Aberdeenshire Council area
Ward 12 - East Garioch
3 elected members

0 1 2 3 4 5 Km
Crown Copyright 2006. Local Government Boundary Commission for Scotland.
All rights reserved. License number 100020537.



Local Government Boundary Commission for Scotland

Aberdeenshire Council area

Ward 13 - Westhill and District

4 elected members

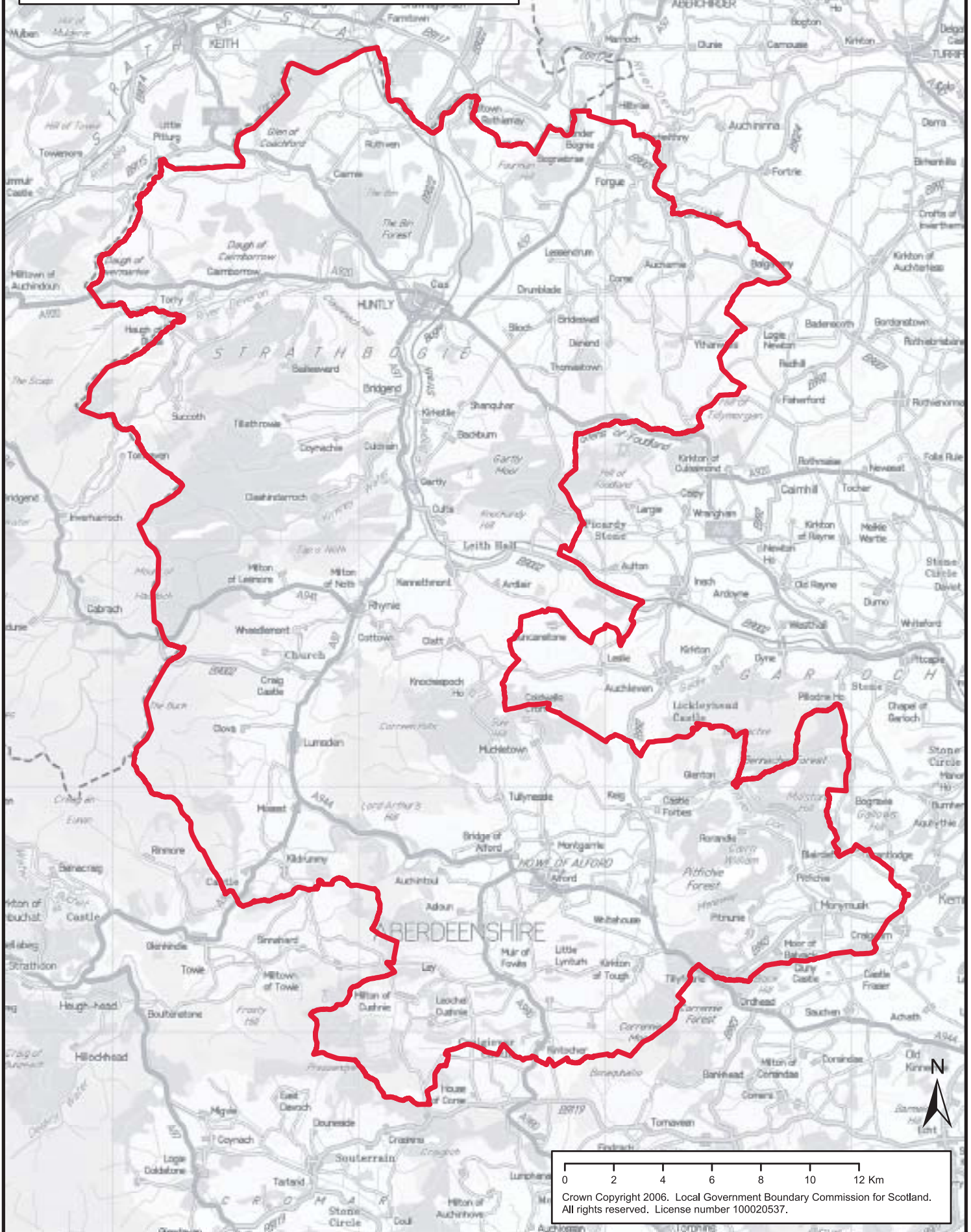
0 2 4 6 Km

Crown Copyright 2006. Local Government Boundary Commission for Scotland. All rights reserved. License number 100020637.

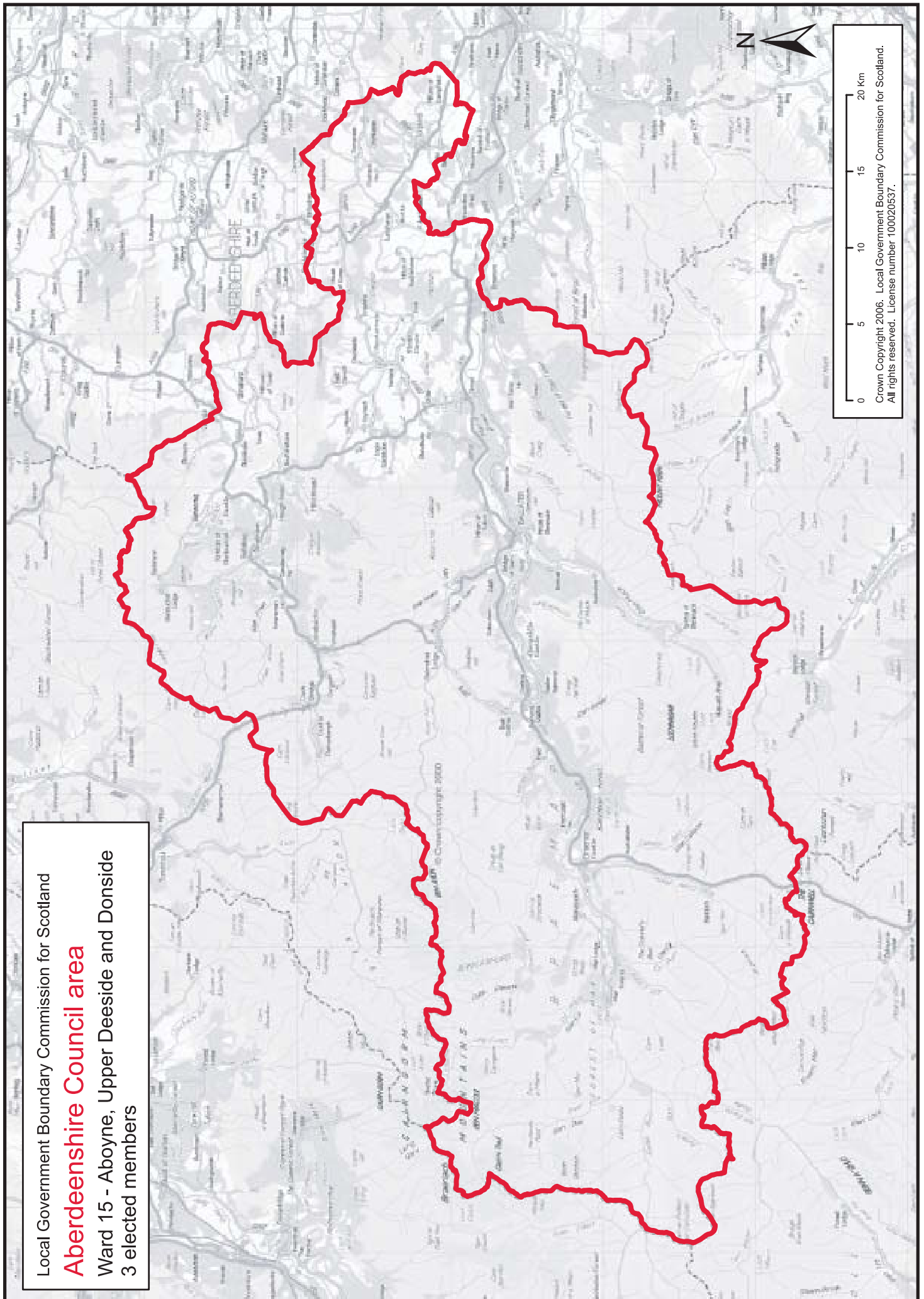
Local Government Boundary Commission for Scotland

Aberdeenshire Council area

Ward 14 - Huntly, Strathbogie and Howe of Alford
4 elected members



0 2 4 6 8 10 12 Km
Crown Copyright 2006. Local Government Boundary Commission for Scotland.
All rights reserved. License number 100020537.



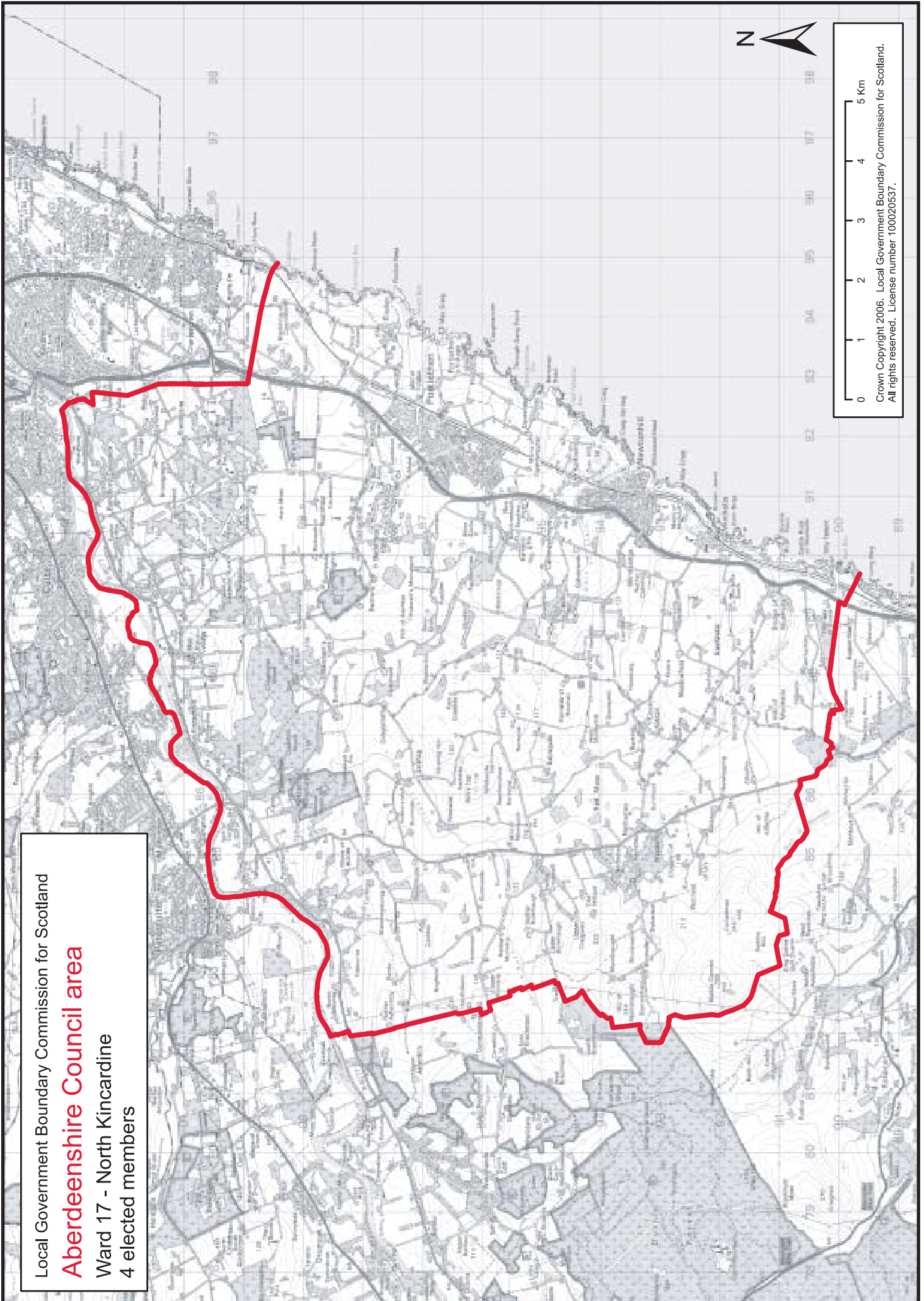
Local Government Boundary Commission for Scotland

Aberdeenshire Council area

Ward 15 - Aboyne, Upper Deeside and Donside

3 elected members

0 5 10 15 20 Km
Crown Copyright 2006. Local Government Boundary Commission for Scotland.
All rights reserved. License number 100020537.



Local Government Boundary Commission for Scotland
Aberdeenshire Council area
Ward 17 - North Kincardine
4 elected members

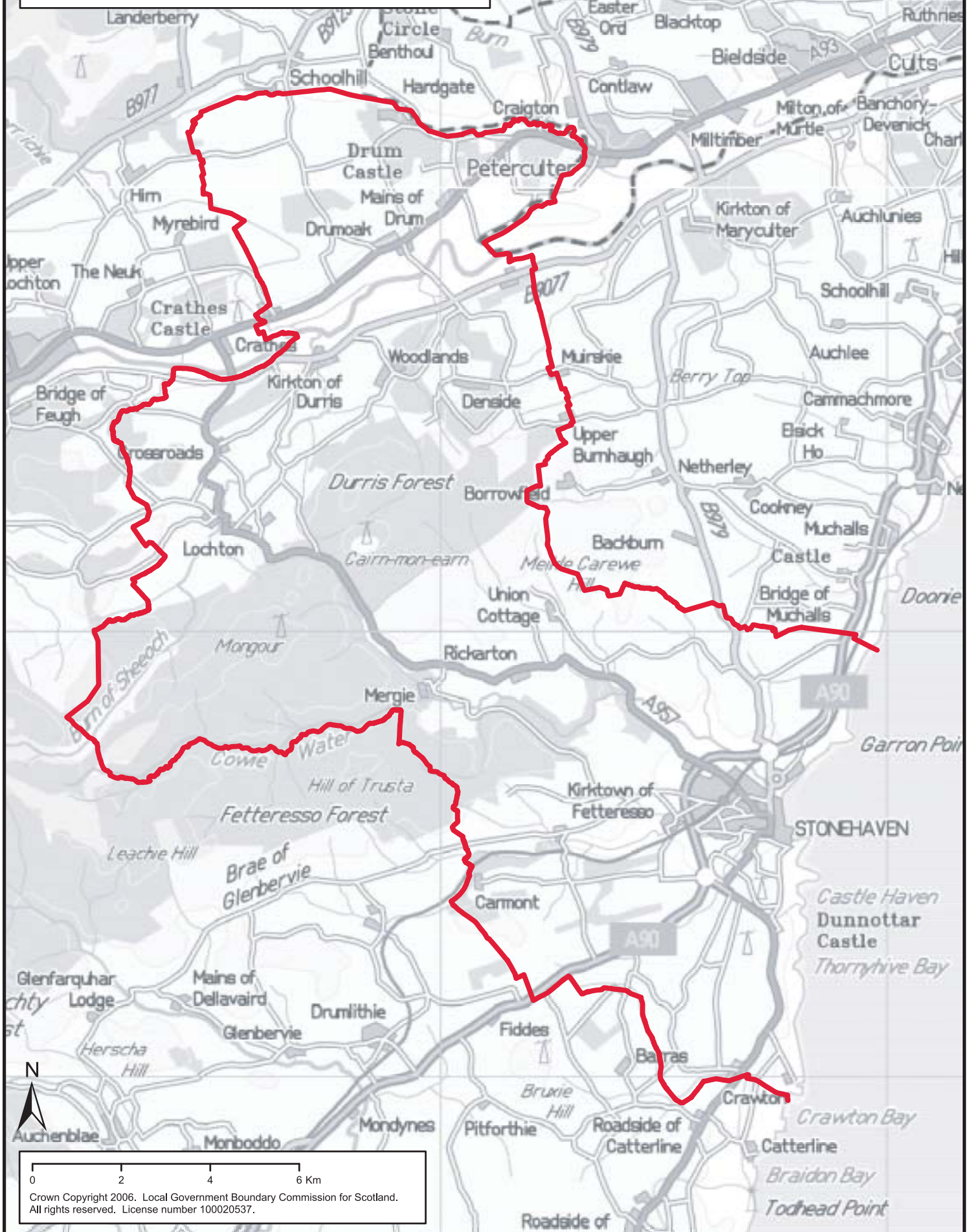
0 1 2 3 4 5 Km
Crown Copyright 2006. Local Government Boundary Commission for Scotland.
All rights reserved. License number 100020537.

Local Government Boundary Commission for Scotland

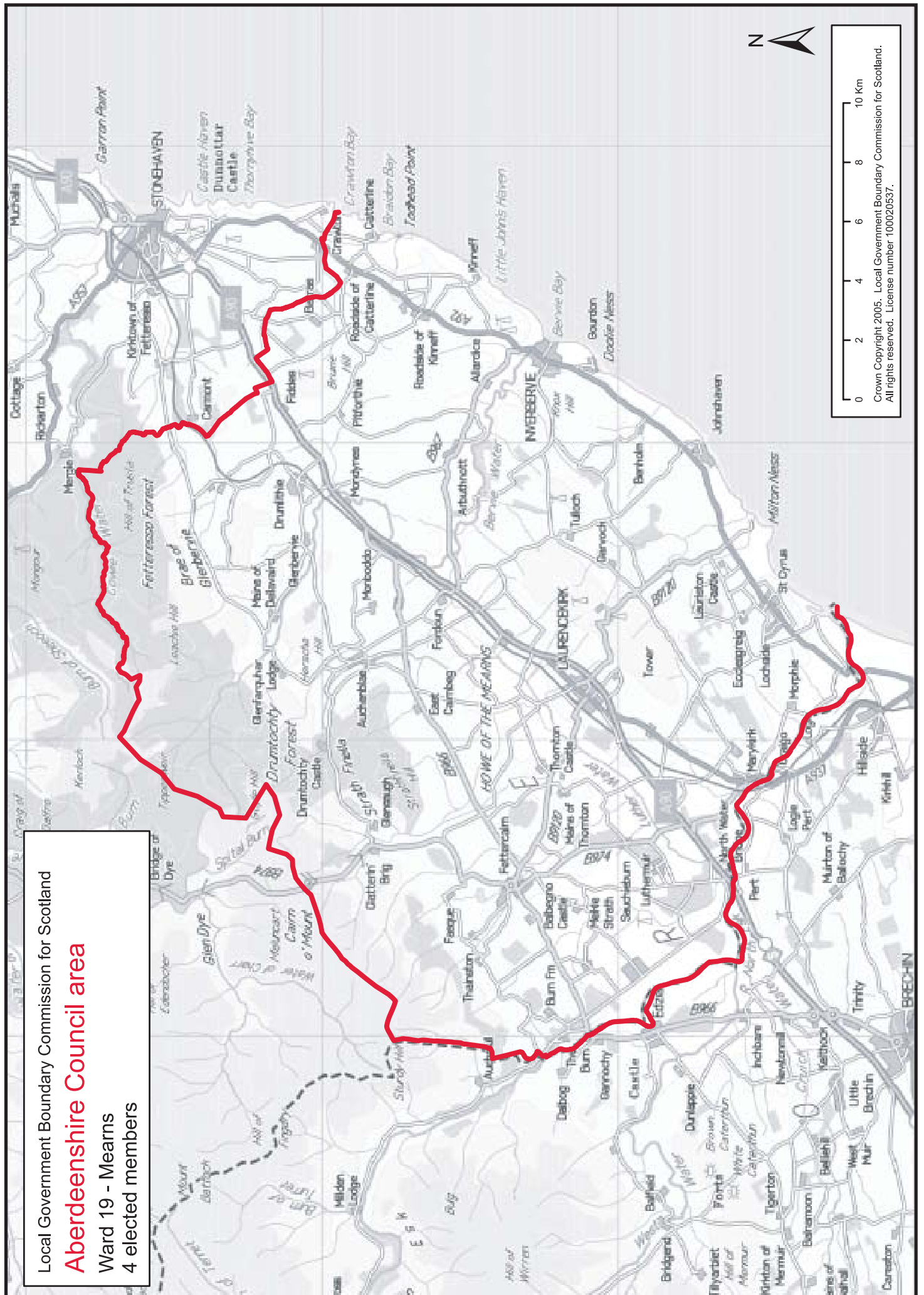
Aberdeenshire Council area

Ward 18 - Stonehaven and Lower Deeside

4 elected members



Crown Copyright 2006. Local Government Boundary Commission for Scotland.
All rights reserved. License number 100020537.



Local Government Boundary Commission for Scotland
Aberdeenshire Council area
 Ward 19 - Mearns
 4 elected members

Crown Copyright 2005. Local Government Boundary Commission for Scotland.
 All rights reserved. License number 100020537.

