

**Second Review of Scottish Parliament Boundaries  
Argyll and Bute, East Dunbartonshire, Falkirk, North Lanarkshire, South  
Lanarkshire, West Dunbartonshire and West Lothian Council areas**

**Action required**

1. The Commission is invited to: -
  - Consider whether it wishes to adopt the Further Proposals as Final Recommendations for Argyll and Bute, East Dunbartonshire, Falkirk, North Lanarkshire, South Lanarkshire, West Dunbartonshire and West Lothian Council areas; or
  - Amend its proposals for constituency boundaries and/or names and consult further.

**Background**

2. Paper BS 141, discussed at the 4 November 2024 Commission meeting and attached provides a background to the Second Review of Scottish Parliament Boundaries in this constituency grouping.
3. At its 19 December 2024 meeting the Commission considered the transcript and Assistant Commissioners report from the Whitburn local inquiry, as well as the alternative suggestions from paper BS 141. Paper BS 154 from that meeting is attached. The Commission preferred Option 1 from Paper BS 154 but deferred agreeing its Additional Proposals in this constituency grouping until it had considered alternative boundaries: by Denny and Blackridge as a revised Option 1; extending the Almond Valley constituency into the Clydesdale constituency; and to improve variation from the electoral quota in the existing Almond Valley and Linlithgow constituencies.

**Options**

4. The following options have been developed for consideration.

**Alternative Option 1A**

5. Option 1A proposes minor changes to all constituency boundaries from Option 1 (Paper BS 154). The principal areas of change are to include Blackridge in a Bathgate, rather than Airdrie, constituency and Denny in a Falkirk West, rather than a Cumbernauld and Kilsyth, constituency. Option 1A proposes an:
  - Airdrie constituency which retains the existing Airdrie and Shotts constituency boundary but is renamed Airdrie to avoid sharing the same name as the UK Parliament constituency.
  - Almond Valley constituency, similar to both the existing and Revised Proposals constituency boundary. There was little comment on this constituency during the revised consultation. The proposed boundary follows ward boundaries.
  - Bathgate constituency, similar to the Revised Proposals that splits a single ward to keep Torphichen in the same constituency as Linlithgow.
  - Falkirk East and Linlithgow constituency similar to the Revised Proposals. It splits the Falkirk South ward by following the railway line and an historical ward boundary (1995-99) by Callander Park.
  - Falkirk West constituency which includes Denny.
  - Cumbernauld and Kilsyth constituency that includes Banknock, Haggs and Longcroft. The Falkirk, Denny and Banknock ward boundary is split by following a historical ward boundary 1999-2007.

6. Appendix A provides maps of Option 1A in block colours. The Revised Proposals are shown as a blue line, the council area boundary as a red line and the existing constituency boundary as a black line.

7. The table below shows the electorate of Option 1A.

Constituency name	Council areas	Electorate	Variation from the electorate quota
Airdrie	North Lanarkshire	54,205	-9.5%
Almond Valley	West Lothian	66,360	10.8%
Bathgate	West Lothian	66,914	11.7%
Cumbernauld and Kilsyth	North Lanarkshire	54,554	-8.9%
Falkirk East and Linlithgow	Falkirk West Lothian	67,661	13.0%
Falkirk West	Falkirk	67,567	12.8%

8. The advantages of Option 1A are it:

- addresses concerns raised during the Further Proposals consultation stage by placing Fauldhouse and Whitburn in West Lothian constituencies (rule 1, 4) and retains villages such as Caldercruix and Plains, north of Airdrie, in an Airdrie constituency (rule 4).
- all constituencies are within 15% variation from the electorate quota.
- is different from the Revised Proposals that resulted in a Local Inquiry in Falkirk. They avoid the naming issue of Falkirk North and South that would cause confusion over ward names (Rule 4) and splitting Banknock, Hags and Longcroft between two constituencies.

9. The disadvantages of Option 1A are it:

- Proposes changes to Further Proposal constituency designs in Falkirk Council areas that had received little negative comment in order to identify a proposal that is more fair for Scotland as a whole. Following the Revised Proposals, Falkirk Council wished to retain two existing Falkirk Constituencies within its area (Rule 1) which were close to the existing quota (Rule 2) , rather than being split across three constituencies (Rule 4). The Additional Proposals split Falkirk council area across three constituencies (Rules 1, 4).
- Proposes three constituencies with variation from the electorate quota over 10% (rule 2).

### Option 1B

10. Option 1B is similar to Option 1A. Option 1B retains four constituencies from Option 1A but amends the boundary between the proposed Falkirk West and Falkirk East and Linlithgow constituencies. It places the Falkirk villages of Banknock, Hags and Longcroft with approximately 3,300 electors in a Falkirk West constituency, rather than a Cumbernauld and Kilsyth constituency.

11. Appendix B provides maps of Option 1B in block colours. The existing constituency boundaries are shown as a black line and the council area boundary as a red line.

12. The table below shows the electorate of Alternative Option 1B.

Constituency name	Council areas	Electorate	Variation from the electorate quota
Falkirk West	Falkirk	68,831	14.9%
Falkirk East and Linlithgow	Falkirk West Lothian	69,741	16.4%

13. The advantages of Option 1B are it:

- addresses concerns raised during the Further Proposals consultation stage by placing Fauldhouse and Whitburn in West Lothian constituencies (rule 1, 4) and retains villages such as Caldercruix and Plains, north of Airdrie, in an Airdrie constituency (rule 4).
- Proposes solutions for West Lothian that are within the review rules.
- Is markedly different from the Revised Proposals in Falkirk that resulted in council objection and Local Inquiry: It adopts the use of Falkirk East and West, avoiding the North/South terminology likely to cause voter confusion (rule 4); it locates Falkirk council area across two constituencies rather than three (rule 1), does not include parts of North Lanarkshire with a Falkirk constituency (rules 1, 4); Falkirk West is entirely within Falkirk council area (rule 1); and a smaller proportion of West Lothian is included in a Falkirk East constituency than was the case at the revised stage (rule 1, 4).
- addresses the review rules across multiple council areas. Given population change and council boundaries, any solution seeking to address the concerns of a single council at a time results in solutions that are clearly unpopular in neighbouring areas and violate review rules. Each attempt at this has resulted in Local Inquiries. Option 1B offers smaller variations from review rules across a wider group of council areas (proposes only one constituency that includes parts of two council areas (rule 1), while option 1A proposes two constituencies that includes parts of two council areas).

14. The disadvantages of Option 1B are similar to Option 1A

- Proposes two constituencies in excess of 10% deviation from the electoral quota and in excess of 15% in the case of Falkirk East and Linlithgow (Rule 2)
- Includes parts of West Lothian in a Falkirk constituency (Rule 1,4)

### Alternative Option – Clydesdale

15. This option aims to address the high electorate in West Lothian Council area by adding electors from West Lothian to a South Lanarkshire Clydesdale constituency.

16. West Calder with nearly 5,000 electors is added to a Clydesdale constituency. The proposed boundary mainly follows a community council area boundary and a river (Breich Water).

17. The Commission has already considered an Edinburgh-West Lothian constituency (Edinburgh Forth and Linlithgow – Provisional Proposals); Falkirk-West Lothian constituency (Linlithgow and Falkirk South – Revised Proposals); North

Lanarkshire- West Lothian constituency (Airdrie – Further Proposals). All three of these proposals resulted in local inquiries.

18. The Revised Proposals retained the existing Clydesdale constituency. It sits wholly within South Lanarkshire Council area and has an electorate of 61,011. There were few comments regarding the Clydesdale constituency during the Revised Proposals consultation stage.
19. Appendix C provides maps of Option - Clydesdale in block colours. The existing constituency boundaries are shown as a black line and the council area boundary as a red line.
20. The table below shows the electorate of Option - Clydesdale.

Constituency name	Council areas	Electorate	Variation from the electorate quota
Bathgate	West Lothian	69,058	15.3%
Livingston	West Lothian	72,560	21.1%
Clydesdale	South Lanarkshire West Lothian	65,849	9.9%

21. The advantages of Option – Clydesdale are it: improves variation from the electorate quota for the two West Lothian constituencies but both constituencies are still 15% above the electoral quota (rule 2).
22. The disadvantages of Option – Clydesdale are it:
- does not consider rule 1 (local authority boundaries) with the Clydesdale constituency including electors from South Lanarkshire and West Lothian Council areas.
  - there is little to connect communities in West Calder and Clydesdale with higher ground (Pentland Hills) acting as a natural boundary between them (rule 4).
  - The two West Lothian constituencies still have electorates well above the electorate quota (rule 2). The Venice Commission - Code of Good Practice in Electoral Matters states electoral parity should not exceed 15% except in exceptional circumstances.

### Alternative Option - West Lothian

23. Option – West Lothian aims to balance the electorate between the two existing West Lothian constituencies. They have electorates of 70,119 (Almond Valley – variation from the electorate quota +17% and 76,337 (Linlithgow – variation from the electorate quota +27%).
24. The proposed boundary partly follows the existing constituency boundary (M8 motorway), a ward boundary and the Whitburn community council area boundary.
25. Appendix D provides maps of Option – West Lothian in block colours. The existing constituency boundaries are shown as a black line and the council area boundary as a red line.
26. The table below shows the electorate of alternative Option – West Lothian.

Constituency name	Council areas	Electorate	Variation from the electorate quota
Bathgate	West Lothian	71,926	20.1%
Almond Valley	West Lothian	74,530	24.4%

27. The advantages of Alternative Option West Lothian are it:

- slightly improves variation from the electorate quota in the existing Linlithgow constituency (rule 2).
- retains two constituencies wholly within West Lothian Council area (rule 1).

28. The disadvantages of Alternative Option West Lothian are it:

- worsens variation from the electorate quota in the existing Almond Valley constituency and both constituencies still have electorates well above the electorate quota (rule 2). The Venice Commission - Code of Good Practice in Electoral Matters states electoral parity should not exceed 15% except in exceptional circumstances.
- Any further refinement to better balance electorate would break local ties in Livingston or Whitburn (rule 4).

### Summary

29. At its 19 December 2024 meeting the Commission preferred Option 1 from Paper BS 154 but deferred agreeing its Additional Proposals in this constituency grouping until it had considered additional modifications to Option 1.

30. Option 1 from Paper BS 154 followed a similar approach to the Revised Proposals, adding Linlithgow to a Falkirk constituency. Falkirk Council had objected to the Revised Proposals because the existing Falkirk constituencies were close to the electorate quota, broke local ties between Banknock, Haggs and Longcroft, the proposed constituency names were confusing as similar to electoral ward names and it would be challenging to administer cross council area constituencies for elections. A local inquiry was held in Falkirk.

31. Option 1A is similar to Option 1 but avoids some of Falkirk Council's concerns following the Revised Proposals, and avoids some of West Lothian's concerns following the Further Proposals by not placing Blackridge, Fauldhouse or Whitburn (West Lothian) in an Airdrie constituency (rules 1, 4). It also places Denny in a Falkirk West constituency (rule 2). All constituencies are within 15% variation from the electorate quota (rule 1).

32. Option 1B retains four constituencies from Option 1A (rules 1, 2, 4) but further locates Falkirk Council across two constituencies rather than three (rule 1) by placing Banknock, Haggs and Longcroft within a Falkirk West constituency rather than a Cumbernauld and Kilsyth constituency. As with option 1A, both Falkirk constituencies are above 10%, with Falkirk Est and Linlithgow now in excess of 15% variation from parity (rule 2)

33. Option - Clydesdale was developed to see if there was any merit in combining West Lothian with the South Lanarkshire, Clydesdale constituency. This option still proposes two constituencies with variation from the electorate quota over

15% with the Livingston constituency more than 20% variation from parity. The Commission has already consulted on proposals that combine West Lothian with all other neighbouring council areas and all have resulted in local inquiries.

34. Option – West Lothian aims to balance the electorate of the two existing West Lothian constituencies. It retains two constituencies within West Lothian Council area but variation from the electorate quota is over 20% in both constituencies.

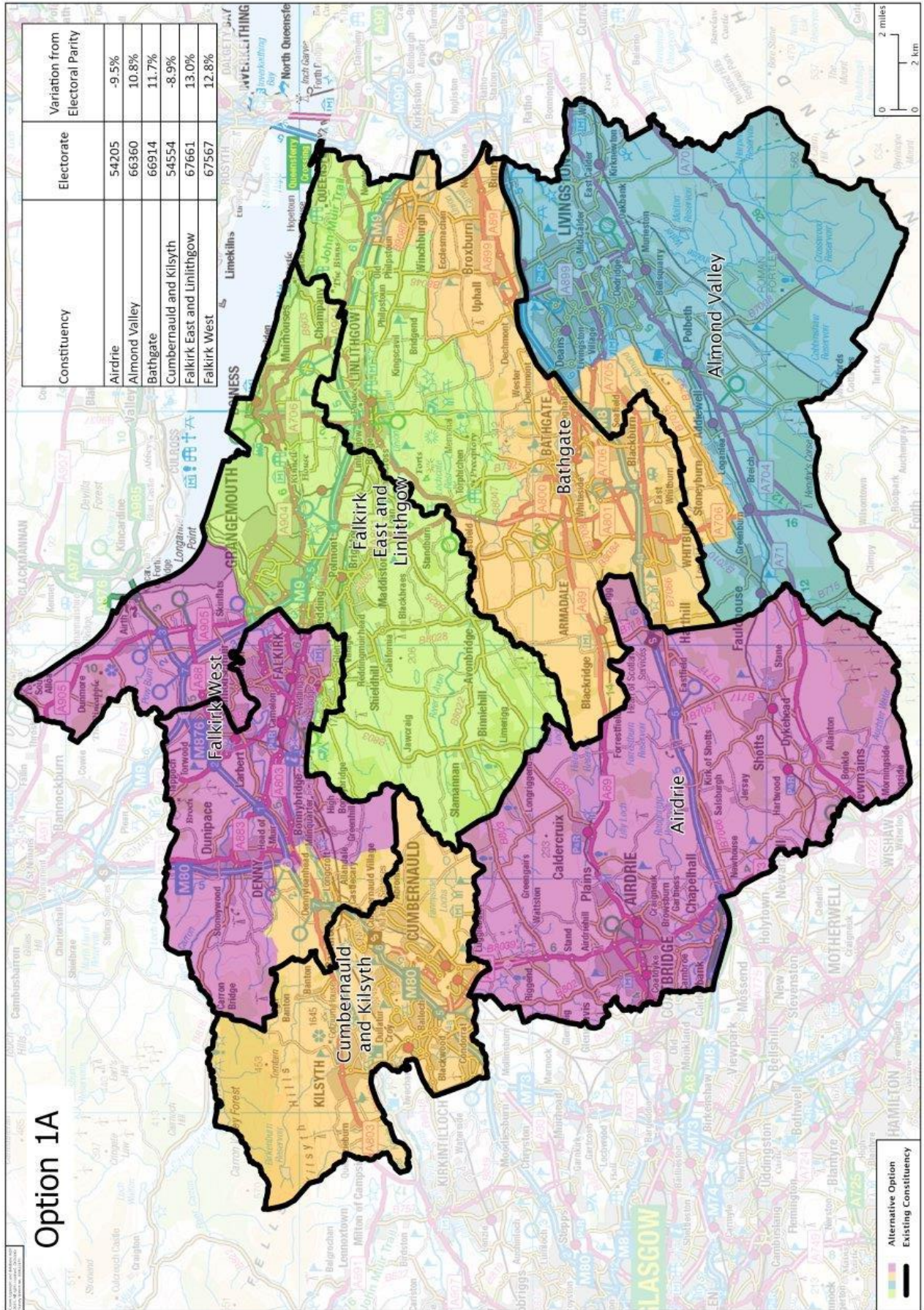
### **Conclusion**

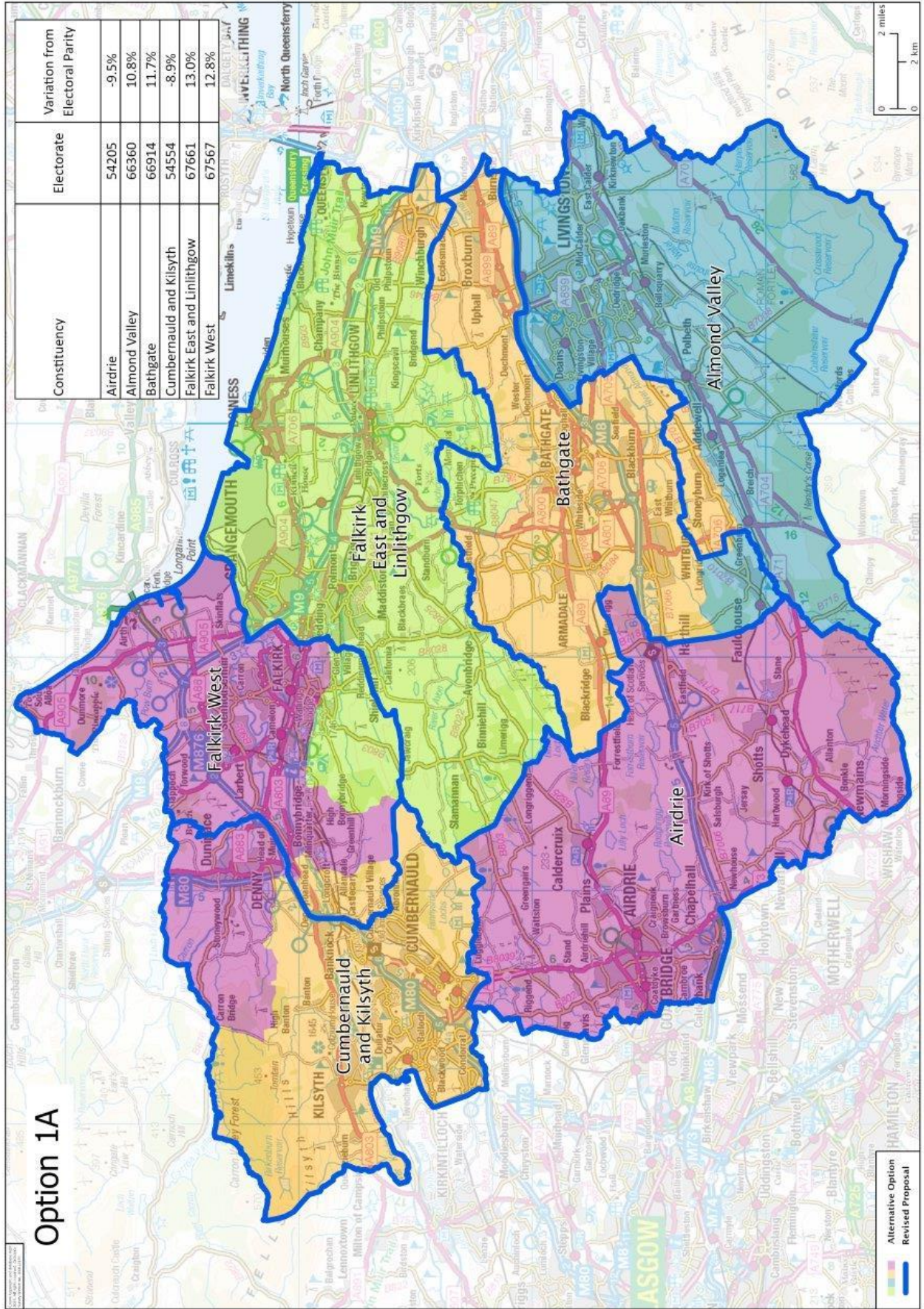
35. The Commission is invited to:

- Consider whether it wishes to adopt the Further Proposals as Final Recommendations for these constituencies. OR
- Amend its proposals for constituency boundaries or names and consult further.

**Secretariat**  
**January 2025**

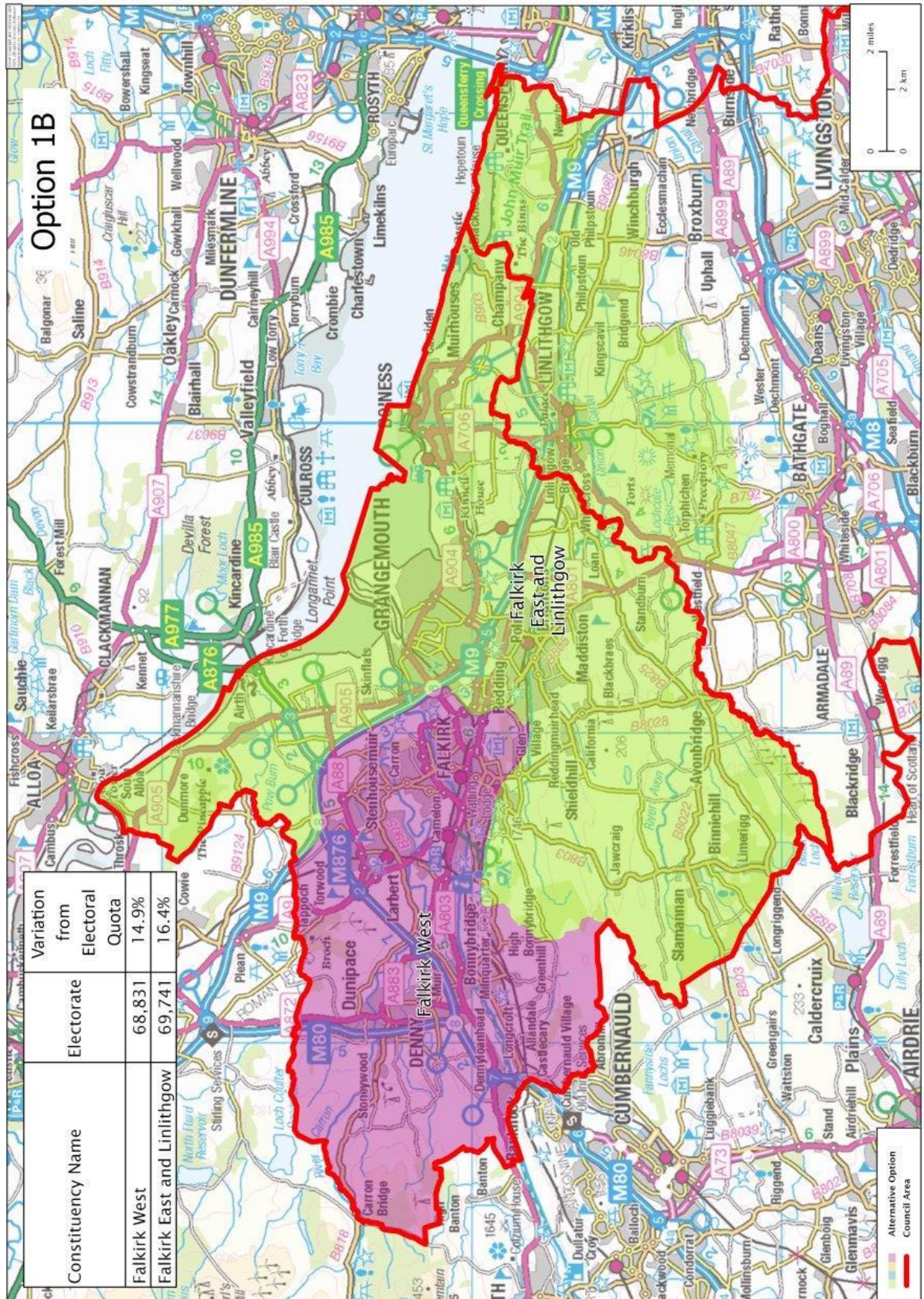


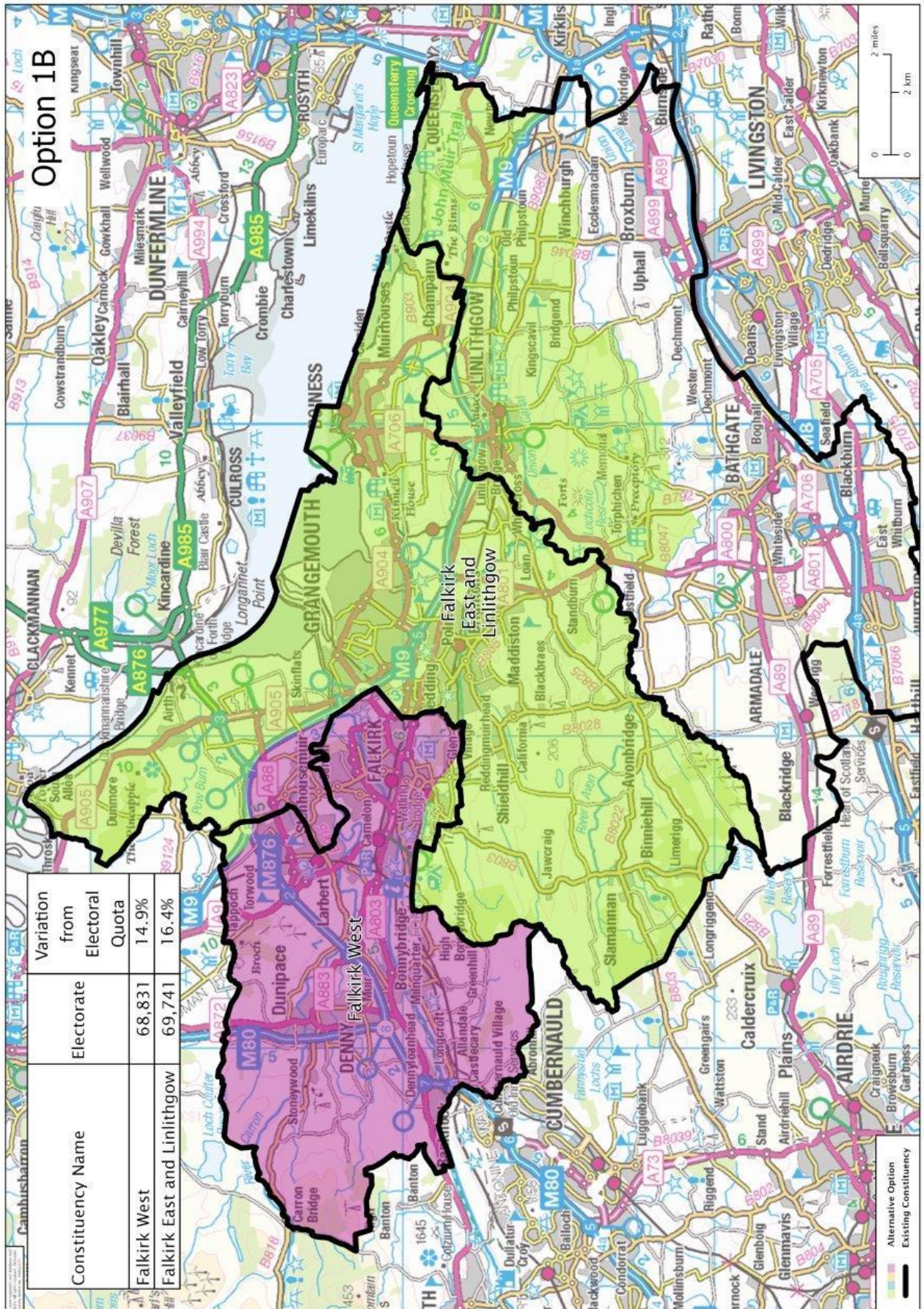


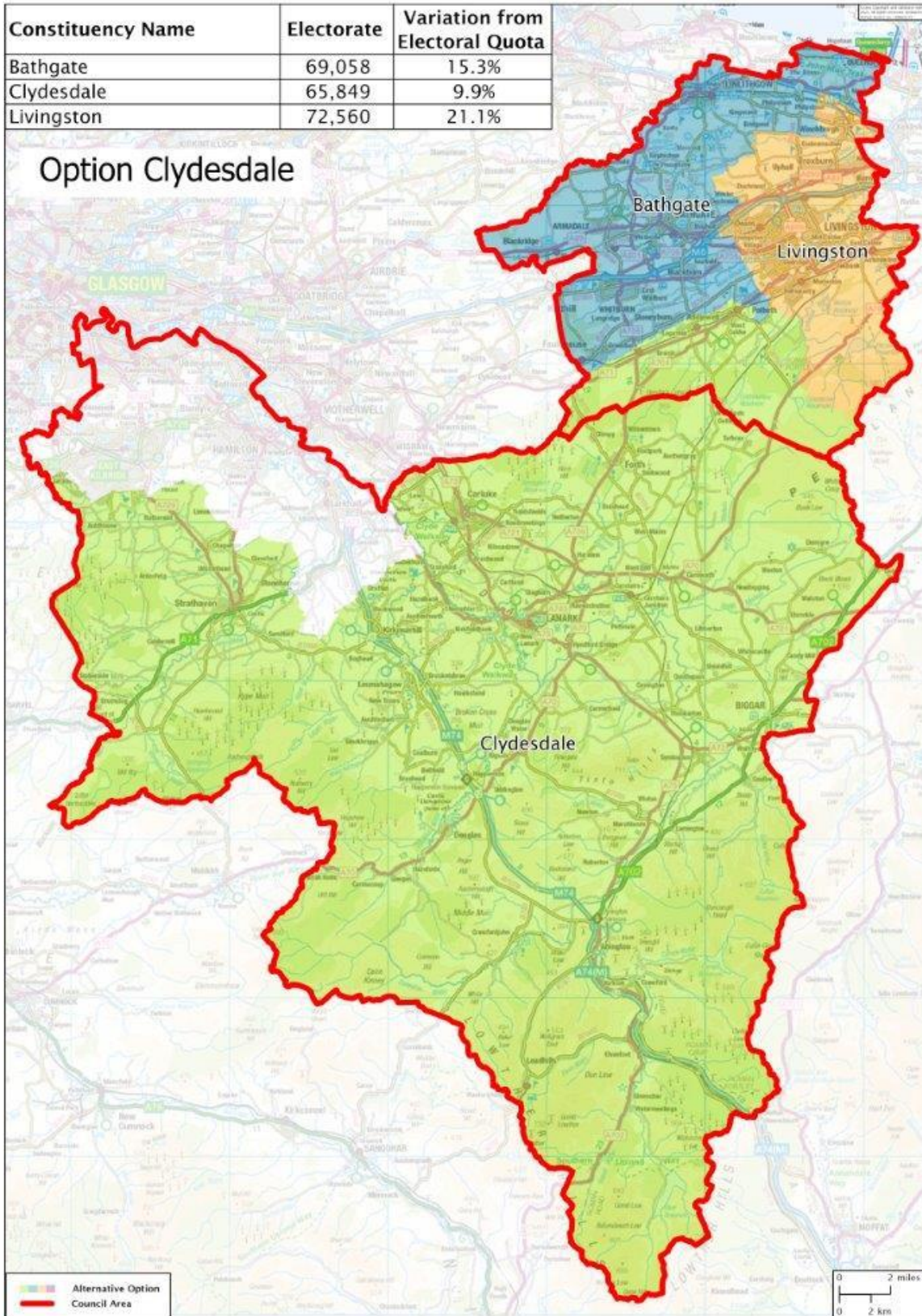


Option 1A

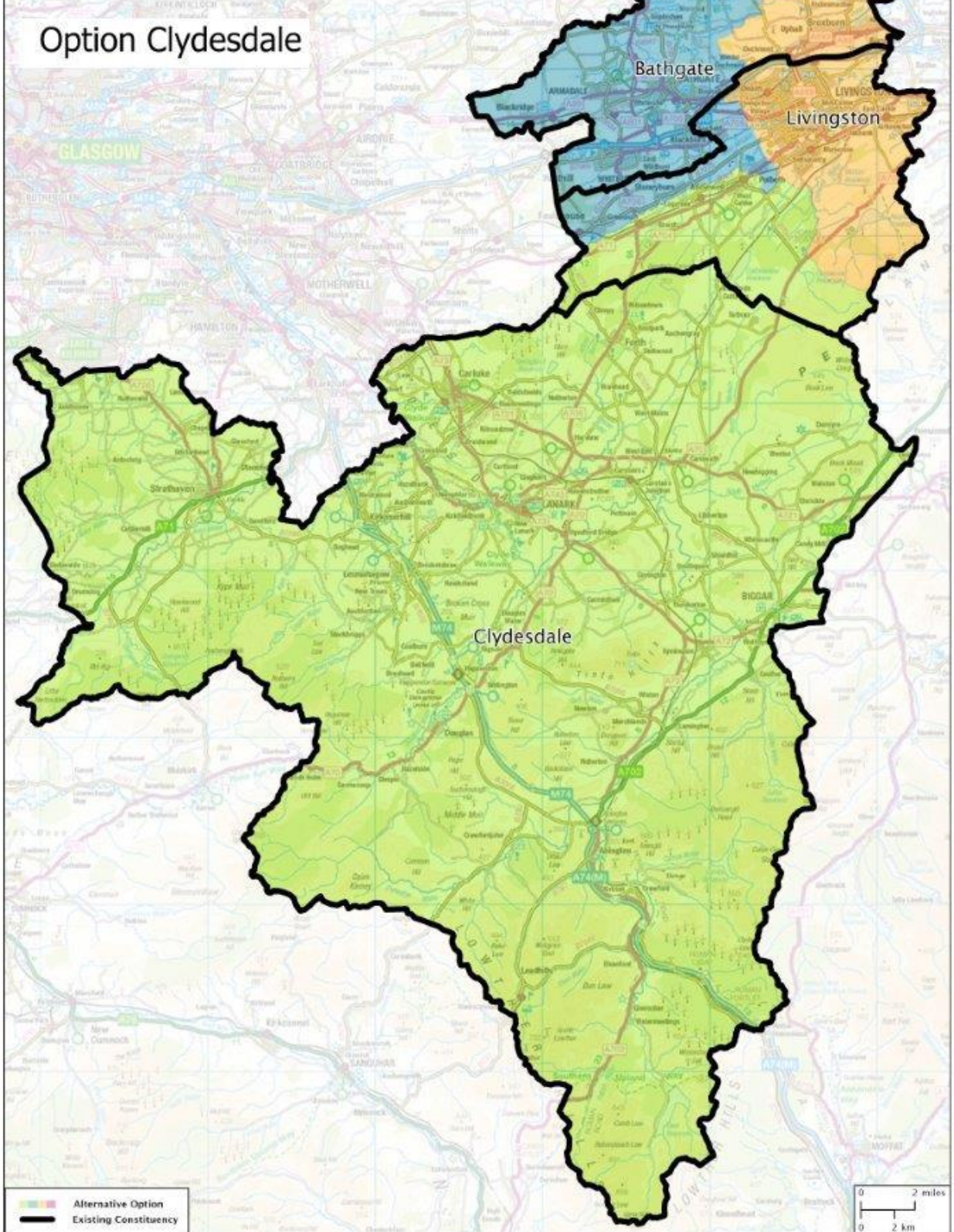
Alternative Option  
Revised Proposal

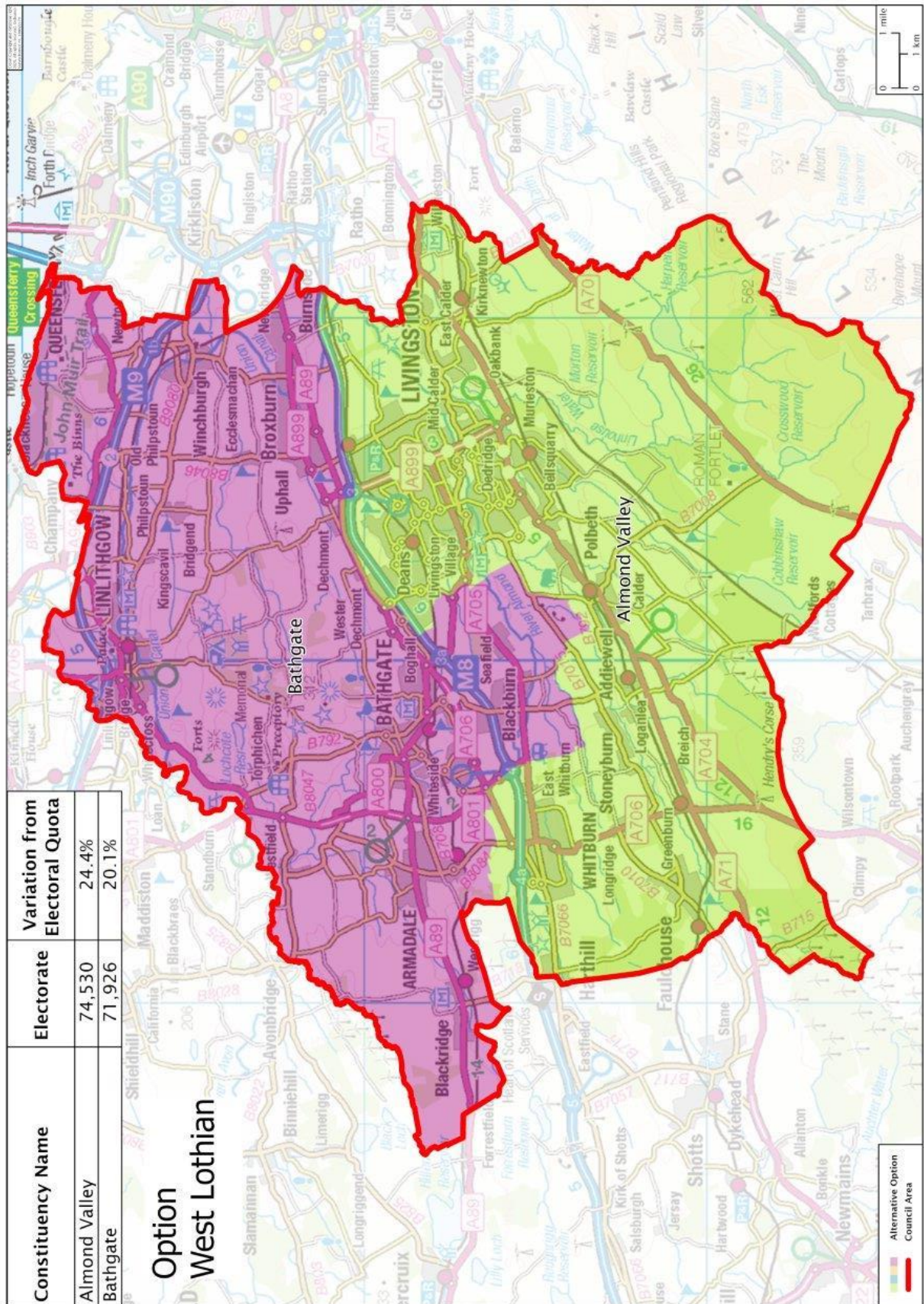


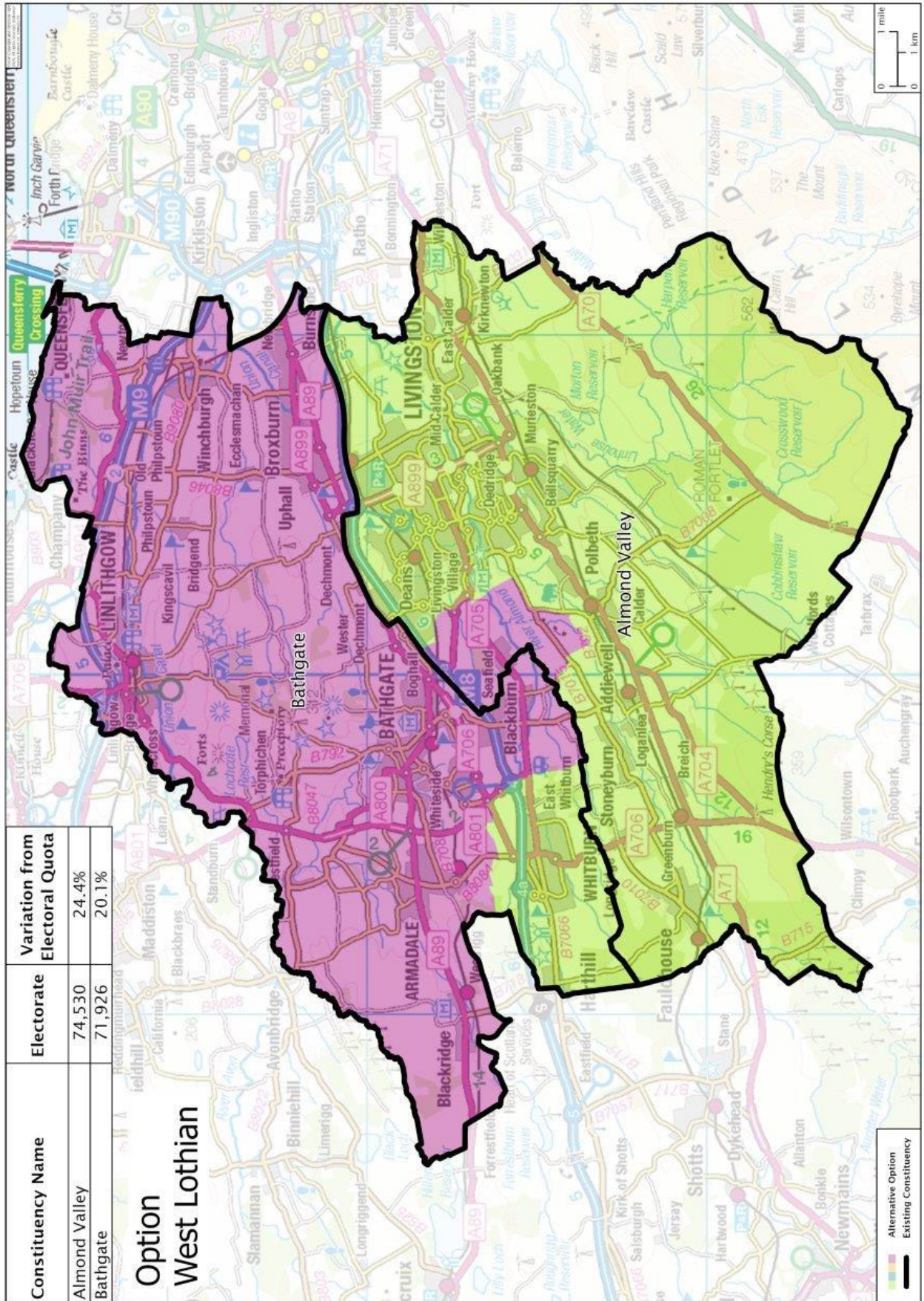




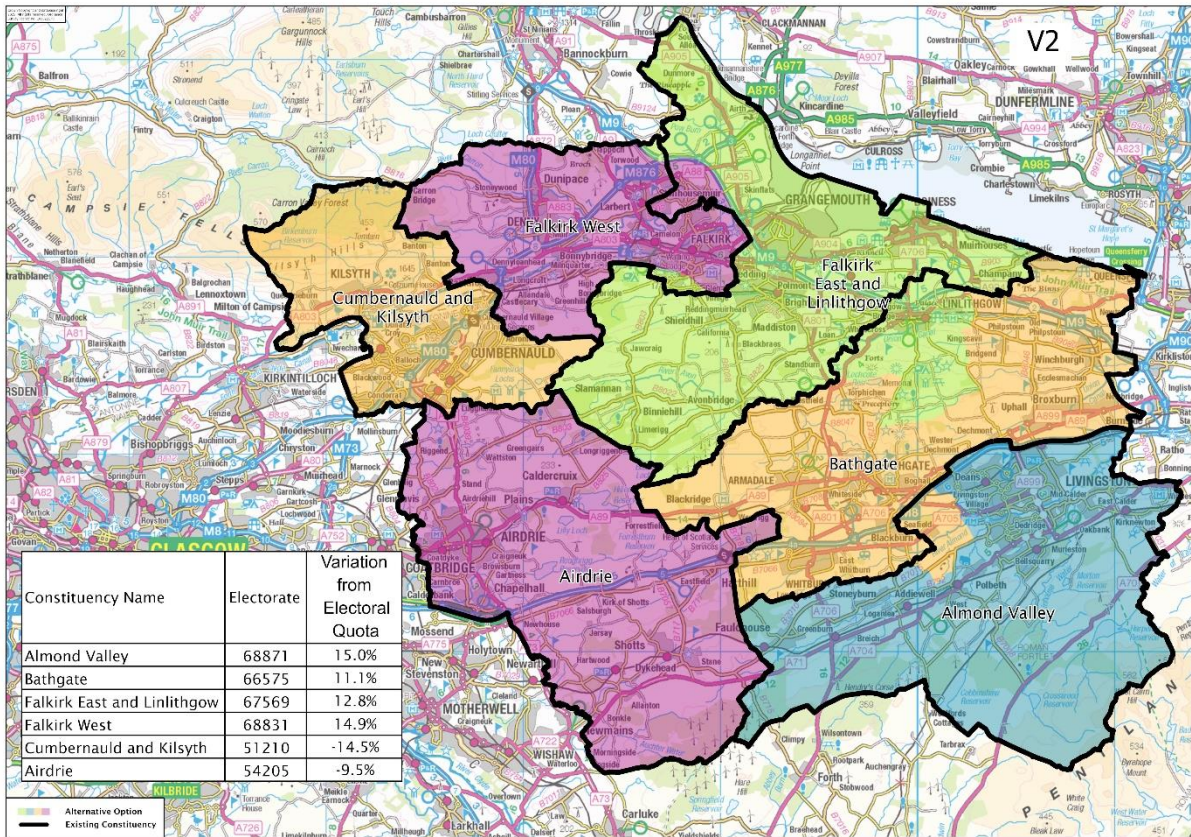
Constituency Name	Electorate	Variation from Electoral Quota
Bathgate	69,058	15.3%
Clydesdale	65,849	9.9%
Livingston	72,560	21.1%







### Option 1B – version 2



### Option 1B – version 3

