

## Second Review of Scottish Parliament Boundaries Draft Provisional Proposals for Perth and Kinross council areas

### Action required

1. The Commission is invited to consider its Provisional Proposals for Perth and Kinross Council area for its Second Review of Scottish Parliament Boundaries.

### Background

2. The Commission considered provisional groupings of council areas as part of its approach to constituency design for the Second Review, which included a group of two constituencies contained wholly within Perth and Kinross Council area, see Paper BS 24. This paper offers options for constituencies within this grouping.
3. The electorate quota for the Second Review of Scottish Parliament Boundaries is 59,902 electors per constituency.
4. The rules for reviewing Scottish Parliament constituencies state:
  - **Rule 1**
    - So far as is practicable, regard must be had to the boundaries of the local government areas having effect from time to time under section 1 of the Local Government etc. (Scotland) Act 1994.
  - **Rule 2**
    - The electorate of a constituency must be as near the electoral quota as is practicable, having regard to Rule 1.
    - Boundaries Scotland may depart from the strict application of Rule 1 if it thinks that it is desirable to do so to avoid an excessive disparity between the electorate of a constituency and the electoral quota or between the electorate of a constituency and that of neighbouring constituencies.
  - **Rule 3**
    - Boundaries Scotland may depart from the strict application of Rules 1 and 2 if it thinks that special geographical considerations (including in particular the size, shape and accessibility of a constituency) render it desirable to do so.
  - **Rule 4**
    - Boundaries Scotland need not aim at giving full effect in all circumstances to Rules 1 to 3 but it must take account (so far as it reasonably can)—
      - (a) of the inconveniences attendant on alterations of constituencies other than alterations made for the purposes of Rule 1, and
      - (b) of any local ties which would be broken by such alterations.
5. The constituency entitlement for Perth and Kinross Council area is as shown in the table below:

Council area	Electorate (1 Sept 22)	Constituency entitlement
Perth and Kinross	120,039	2.0
<b>Total</b>	<b>120,039</b>	<b>2.0</b>

6. The electorates of the two existing Scottish Parliament constituencies within Perth and Kinross Council area are shown in the table below:

Existing constituency	Electorate	Variation from the electoral quota
Perthshire North	57,021	-4.8%
Perthshire South and Kinross-shire	63,018	5.2%

7. The existing Scottish Parliament boundaries have been in use since 2011.
8. Both of the existing constituencies are within 10% of the electoral quota and it is open to the Commission to leave them unchanged for the Second Review.
9. The constituency names in this paper are provisional. The Commission will have the opportunity to review all constituency names and designations prior to the publication of its Provisional Proposals.
10. A map of the existing constituencies in this grouping can be found at Appendix A.
11. The Commission should also consider making changes to the Scottish Parliament boundaries by Keltybridge at the boundary with Fife council area where the ward and council area boundaries were altered following an administrative area review which came into effect in February 2018.

### Options

12. Three options are presented for consideration.

#### Option 1

13. Option 1 proposes to retain the two existing constituencies within Perth and Kinross Council area.
14. The existing constituency boundaries follow the ward boundaries that were in place at the time of the First Review. Since the 5<sup>th</sup> Reviews of Electoral Arrangements in 2017 the constituency boundaries no longer follow ward boundaries by Perth.
15. The city of Perth is split between two constituencies, the boundary broadly follows from the Inveralmond Roundabout, the A912 or Dunkeld Road and then the railway line.

Proposed constituencies	Electorate	Variation from the electoral quota	Wards
Perthshire North	57,021	-4.8%	1-3, 4(part), 10(part), 12(part),
Perthshire South and Kinross-shire	63,018	5.2%	4(part), 6-9, 10(part), 11, 12(part)

16. A map of Option 1 can be found at Appendix A.

17. The advantages of Option 1 are it:

- retains the existing constituencies, which have been in place since 2011 and may avoid confusion for the local electorate;
- two constituencies sit wholly within Perth and Kinross Council area boundary; and

- both constituencies are within 5% variation from the electoral quota.

18. The disadvantages of Option 1 are:

- it splits Perth between constituencies; and
- doesn't follow existing ward boundaries in Perth.

**Option 1A**

19. Option 1A is very similar to Option 1 but follows the existing ward boundaries in Perth. This ensures that Scottish Parliament boundaries are coterminous with ward boundaries throughout the council area.

20. Rather than small parts of wards 10 (Perth City South) and 12 (Perth City Centre) being split, each would sit entirely within a single constituency. This co-terminosity would be beneficial for administrative purposes. Similarly ward 4 (Highland) would not be split north of Perth by Huntingtower as it is currently.

21. Perth would still be split between constituencies as has been the case since 2011.

22. A map of Option 1A can be found at Appendix B.

Proposed constituencies	Electorate	Variation from the electoral quota	Wards
Perthshire North	59,944	0.1%	1,2,3,4,5,12
Perthshire South and Kinross-shire	60,095	0.3%	6,7,8,9,10,11

23. The advantages of Option 1A are:

- avoids splitting any wards in the council area; and
- all constituencies are within 1% variation from the electoral quota.

24. The disadvantages of Option 1A are:

- Perth remains split between constituencies and may break local ties.

**Option 2**

25. Option 2 avoids dividing Perth between constituencies and proposes a North Perthshire constituency and a Perth and Kinross-shire constituency that follows ward boundaries.

26. The proposed North Perthshire constituency is designed with a view to accommodating the city of Perth within a single constituency. As such ward 6 (Strathearn) which is to the west of Perth and broadly follows the A85 and incorporates Crieff and Comrie, is placed within North Perthshire. There are limited direct links between Strathearn and its neighbouring wards to the north and Creiff has been in a constituency with at least part of Perth since 1999.

27. However in creating a North Perthshire constituency it is possible to include all three Perth wards in a single constituency and avoid splitting Perth, as was the case between 1999–2011. The First Review deemed it necessary to split Perth and the First Review Report stated “after considering different options, we agreed that Perth provided a focus for the whole of the council area. With this in mind, we concluded that a configuration which included part of Perth in each of the 2 constituencies, and which respected electoral ward boundaries, produced a

more acceptable solution than other configurations, in terms of the statutory rules.”

28. A map of Option 2 can be found at Appendix B.

Proposed constituencies	Electorate	Variation from the electoral quota	Wards
North Perthshire	55,791	-6.9%	1,2,3,4,5,6
Perth and Kinross-shire	64,248	7.3%	7,8,9,10,11,12

29. The advantages of Option 2 are it:

- avoids splitting any wards; and
- keeps Perth within a single constituency as was the case between 1999 and 2011.

30. The disadvantages of Option 2 are:

- local ties may be broken between Crieff and Perth and Scone and Perth;
- it does not improve variation from electoral quota from Options 1 or 1A; and
- it creates a geographically large North Perthshire constituency extending from Rannoch Station to the outskirts of Dundee..

### Summary

31. All three Options consider the revised council area boundary by Keltybridge.

32. Option 1 retains the existing constituencies, offering continuity with the existing boundaries.

33. Option 1 may offer more recognised boundaries but it splits three wards in and around Perth.

34. Option 1A minimises change to the existing boundaries whilst also aligning constituency boundaries with the existing ward boundaries in Perth.

35. Option 2 also follows wards boundaries and avoids the division of Perth between constituencies as was the case between 1999 and 2011.

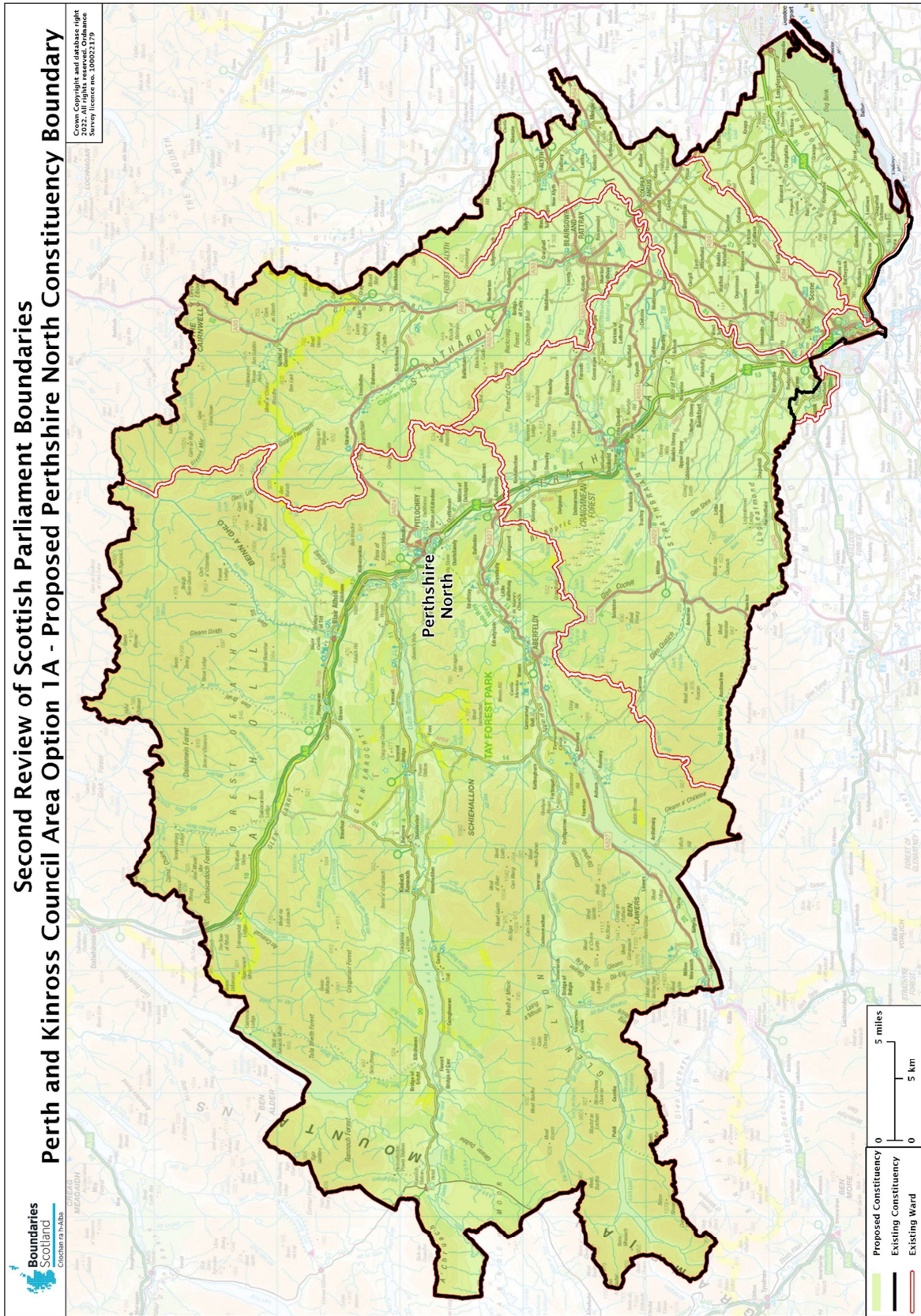
36. Option 2 does not split any wards although it could be argued that to place ward 6 (Strathearn) in a North Perthshire constituency is a less than ideal solution given the lack of direct transport links to neighbouring wards to the north of ward 6.

### Conclusion

37. The Commission is invited to agree its Provisional Proposals for public consultation, subject to satisfactory constituencies being designed in other groupings.

**Secretariat**  
**December 2022**





Appendix C  
Option 1A (Perthshire South and Kinross-shire)

