

Second Review of Scottish Parliament Boundaries Draft Provisional Proposals for Fife Council area

Action required

1. The Commission is invited to consider its Provisional Proposals for Fife council area for its Second Review of Scottish Parliament Boundaries.

Background

2. The Commission previously considered Provisional Proposals for Fife council area at its meeting of 14 December 2022, see BS Paper 28.
3. At the December 2022 meeting the Commission considered the three options presented and agreed that Option 1 and Option 2 were acceptable arrangements but prior to agreeing either they asked the Secretariat to refine the boundaries in Option 2 in a way that recognised Rule 3 of the legislation, by Burntisland and Lochgelly. The Commission noted that Option 3 offered high variation from the electoral quota in the proposed Glenrothes constituency and asked the Secretariat to analyse recent electorate trends within the existing Mid Fife and Glenrothes constituency.
4. The electorate quota for the Second Review of Scottish Parliament Boundaries is 59,902 electors per constituency.
5. The constituency entitlement for Fife council area is for 4.8 or rounded up to 5 constituencies.
6. An updated Option 2 is discussed below as Option 2A. All three options from BS Paper 28 are included in this paper to enable the Commission to consider all of the options for Fife council area.

Mid Fife and Glenrothes – electorate trends

7. The electorate trends for the existing Mid Fife and Glenrothes constituency are taken from the National Records for Scotland (NRS) website, <https://www.nrscotland.gov.uk/statistics-and-data/statistics/statistics-by-theme/electoral-statistics>.
8. The table below shows the electorate of the existing Mid Fife and Glenrothes constituency from 2011 to 2021, published by NRS. The electorate of the Mid Fife and Glenrothes constituency has dropped by nearly 1,500 electors over the past 10 years. The total Scottish electorate increased by 236,806 over the same period.
9. Several factors have changed so it is not possible to accurately compare electorate data from 2011 to 2021. As a result of the 'Scottish Elections (Reduction of Voting Age) Act', passed by the Scottish Parliament on 18 June 2015, the minimum age for voting in Scottish Parliament and Local Government elections was reduced from 18 to 16. No electorate data was published in 2013. In 2014 Individual Electoral Registration (IER) was introduced.

Mid Fife and Glenrothes Electorate									
2011	2012	2014	2015	2016	2017	2018	2019	2020	2021
54,693	53,913	55,038	52,608	53,467	53,288	52,663	53,822	53,043	53,217

Options

10. Option 2A is the design requested by the Commission to assist in their deliberations and Options 1, 2 and 3 from BS Paper 28 are included for comparison. All options take account of the administrative area boundary review by Keltybridge.
11. The constituency names in this paper are provisional. The Commission will have the opportunity to review all constituency names and designations prior to the publication of its Provisional Proposals.

Option 1

12. Option 1 proposes to retain the five existing constituencies within Fife council area. A map of the existing constituencies in this grouping can be found at Appendix A.
13. The existing constituency boundaries closely follow ward boundaries throughout the council area.
14. Only two wards are split between constituencies. Ward 2 (Dunfermline North) is split in a small area by the M90 road with no electors. Ward 5 (Rosyth) is also split between Dunfermline and Cowdenbeath.

Proposed constituencies	Electorate	Variation from electoral quota	Wards
Cowdenbeath	56,363	-5.9%	2(part),5(part),6,7,8
Dunfermline	62,615	4.5%	1,2(part),3,4,5(part)
Kirkcaldy	60,642	1.2%	9,10,11,12,22
Mid Fife and Glenrothes	54,098	-9.7%	13,14,15,21
North East Fife	56,669	-5.4%	16,17,18,19,20

15. A map of Option 1 can be found at Appendix A.
16. The advantages of Option 1 are it:
- retains the existing constituencies, which have been in place since 2011 and may avoid confusion for the local electorate;
 - all five constituencies sit within Fife Council area boundary and closely follow ward boundaries across the council area; and
 - offers variation from the electoral quota within 10% for all five constituencies.
17. The disadvantages of Option 1 are two wards are divided between constituencies.

Option 2

18. Option 2 retains five constituencies within Fife council area, which generally follow ward boundaries, but it seeks to improve variation from electoral quota throughout the council area and particularly in the Mid Fife and Glenrothes constituency.
19. In order to achieve an improvement in variation from electoral quota it is necessary to make a number of changes to the existing constituencies.

20. Option 2 proposes a Dunfermline constituency that contains the West Fife and Coastal Villages ward and the three Dunfermline wards. The whole of ward 5 (Rosyth) forms part of a proposed Cowdenbeath, Inverkeithing and Rosyth constituency. In a change from the existing arrangements, ward 8 (Lochgelly, Cardenden and Benarty) is split following the Cardenden community council boundary with the western part of the ward including Balingry, Crosshill and Lochgelly included in the aforementioned Cowdenbeath, Inverkeithing and Rosyth constituency. The eastern part of ward 8 including Cardenden and Dundonald is added to the existing Mid Fife and Glenrothes constituency.
21. Burntisland is placed into the proposed Cowdenbeath, Inverkeithing and Rosyth constituency by following the Burntisland community council area boundary. These changes follow recognised ward and community council area boundaries and ensure that variation from electoral quota is improved across all constituencies.
22. A map of Option 2 can be found at Appendix B.

Proposed constituencies	Electorate	Variation from electoral quota	Wards
Cowdenbeath, Inverkeithing and Rosyth	58,670	-2.1%	5,6,7,8(part), 9(part)
Dunfermline	60,987	1.8%	1,2,3,4,
Kirkcaldy	55,578	-7.2%	9(part),10,11,12,22
Mid Fife and Glenrothes	58,483	-2.4%	8(part),13,14,15,21
North East Fife	56,669	-5.4%	16,17,18,19,20

23. The advantages of Option 2 are it:
- improves on existing variation from electoral quota; and
 - only two wards are split between constituencies.
24. The disadvantages of Option 2 are it:
- makes changes to the long-standing existing constituencies that are currently recognised locally and within acceptable levels of variation from the electoral quota; and
 - may break local ties where wards have been split by Cardenden and Burntisland.

Option 2A

25. At its meeting of 14 December 2022, the Commission agreed they were reasonably content with the boundaries proposed in Option 2 but had concerns that the boundary by Burntisland appeared convoluted and asked if it could be improved upon.
26. Option 2A follows the eastern boundary of Burntisland, Auchtertool and Lochgelly community council boundaries by Burntisland. As a consequence, 525 electors from the proposed Kirkcaldy constituency are transferred to the proposed Cowdenbeath, Inverkeithing and Rosyth constituency. This proposed boundary follows a more direct path from north to south from the south east of Lochgelly to the coast, east of Burntisland.
27. A map of Option 2A can be found at Appendix C.

Constituency	Electorate	Variation from electoral quota	Wards
Cowdenbeath, Inverkeithing and Rosyth	59,195	-1.2%	5,6,7,8(part),9(part)
Dunfermline	60,987	1.8%	1,2,3,4
Kirkcaldy	55,053	-8.1%	9(part),10,11,12,22
Mid Fife and Glenrothes	58,483	-2.4%	8(part),13,14,15,21
North East Fife	56,669	-5.4%	16,17,18,19,20

28. The advantages of Option 2A are it:

- is similar to Option 2 and improves on existing variation from electoral quota;
- offers a simpler boundary between Cowdenbeath, Inverkeithing and Rosyth constituency and the Kirkcaldy constituency; and
- only two wards are split between constituencies.

29. The disadvantages of Option 2A are it:

- makes changes to the long-standing existing constituencies that are currently recognised locally and within acceptable levels of variation from the electoral quota; and
- may break local ties where wards have been split by Cardenden and Burntisland.

Option 3

30. Option 3 retains five constituencies within Fife council area, which follow ward boundaries and also seeks to improve variation from electoral quota by changing the constituency boundary between the Dunfermline and Cowdenbeath constituencies.

31. Option 3 removes the part of ward 5 (Rosyth) which is currently within the Dunfermline constituency and places ward 5 in its entirety in the proposed Cowdenbeath, Inverkeithing and Rosyth constituency along with ward 9 (Burntisland, Kinghorn and Western Kirkcaldy).

32. Elsewhere in Option 3, ward 21 (Leven, Kennoway and Largo) is added to the Kirkcaldy wards to create a coastal constituency. To balance this, ward 8 (Lochgelly, Cardenden and Benarty) is added to the Glenrothes wards, and North East Fife is unchanged from the existing arrangements.

33. A map of Option 3 can be found at Appendix D.

Proposed constituencies	Electorate	Variation from electoral quota	Wards
Dunfermline	60,987	1.8%	1,2,3,4
Cowdenbeath, Inverkeithing and Rosyth	55,954	-6.6%	5,6,7,9
Kirkcaldy	63,761	6.4%	10,11,12,21,22
Glenrothes	53,016	-11.5%	8,13,14,15
North East Fife	56,669	-5.4%	16,17,18,19,20

34. The advantage of Option 3 is that it retains whole wards throughout the council area.

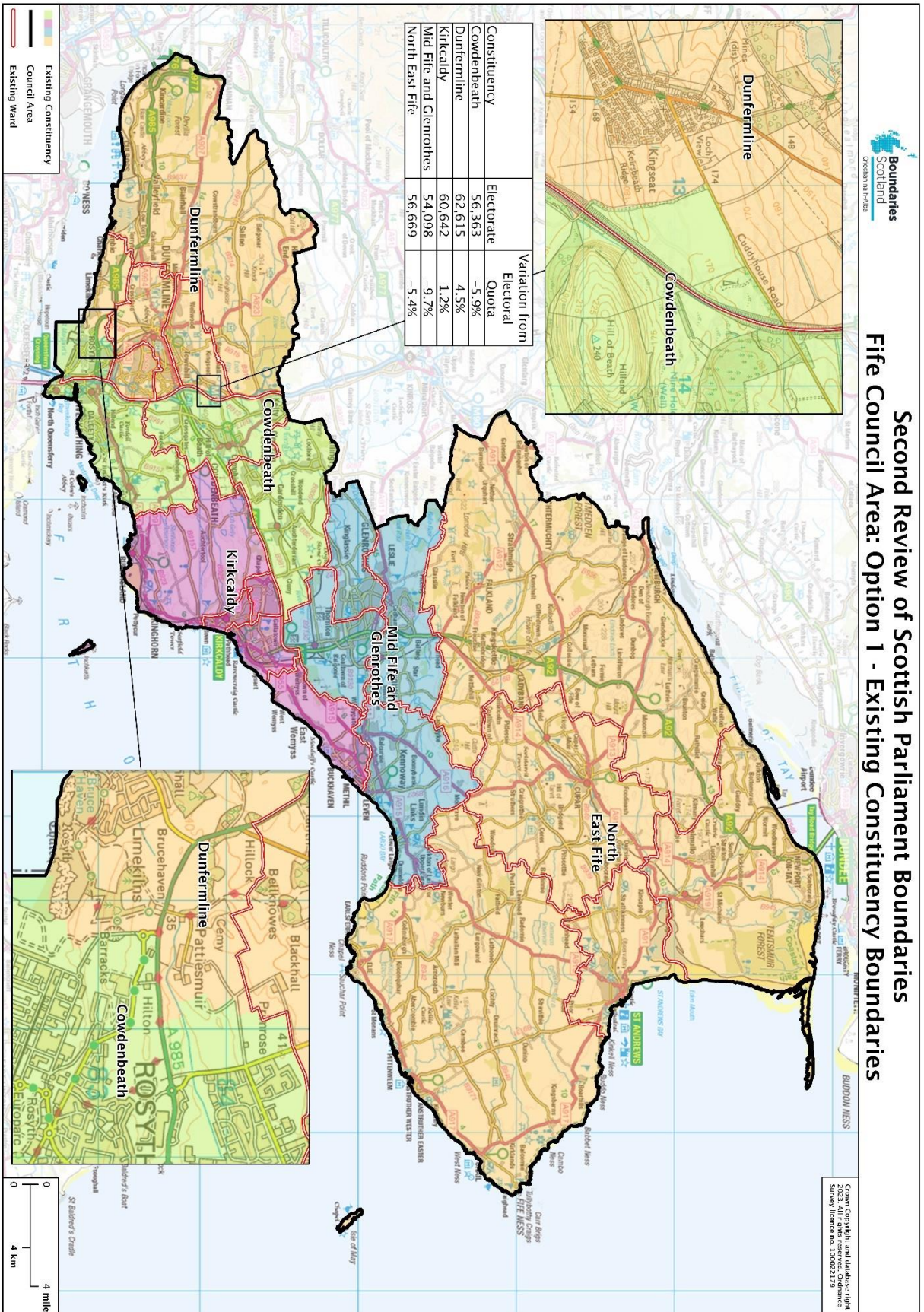
35. The disadvantages of Option 3 are it:
- makes changes to the existing arrangements that are long standing, recognised and within acceptable levels of variation from the electoral quota; and
 - proposes a constituency with variation from electoral quota over 10%.

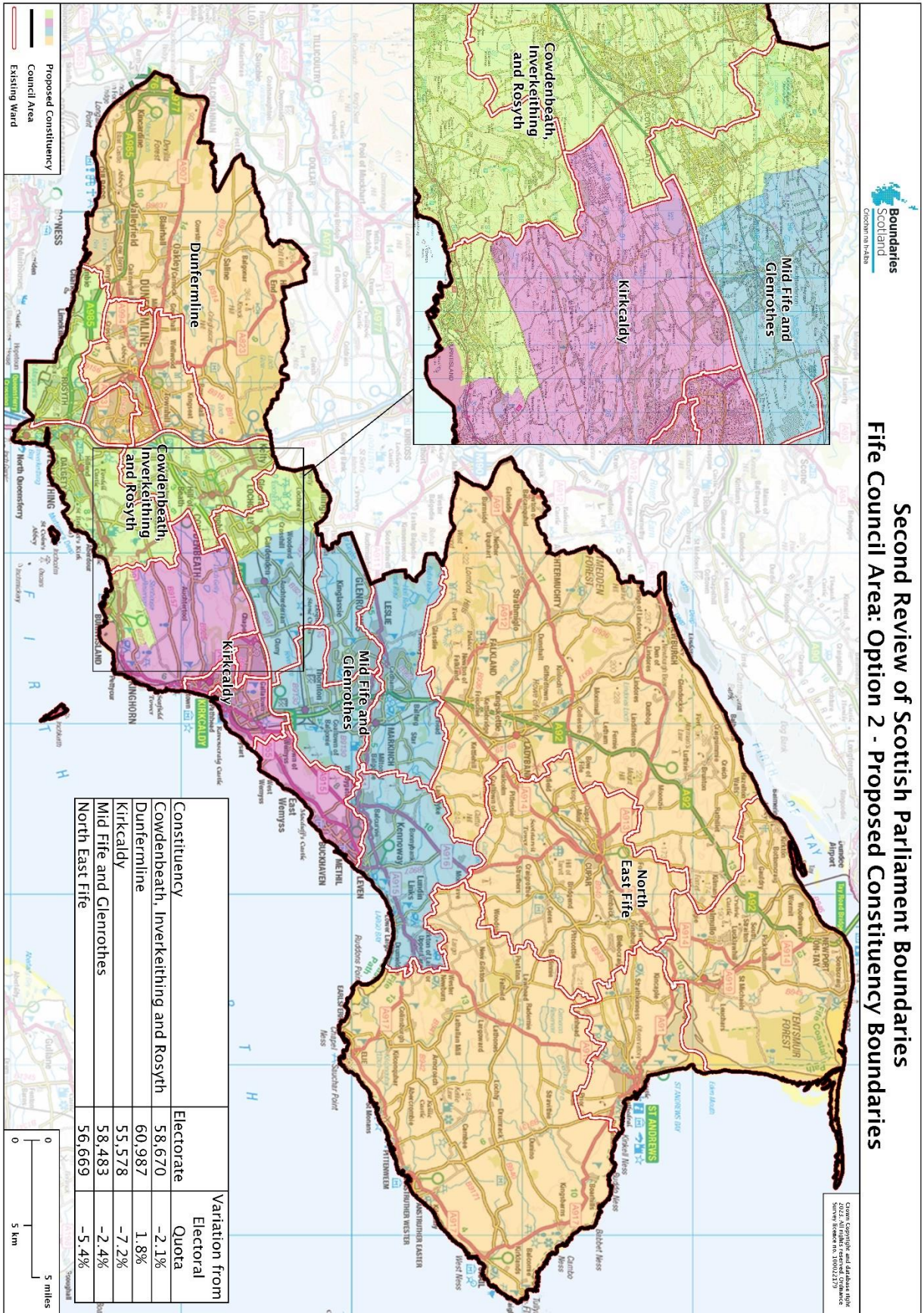
Summary

36. All of the options presented consider the revised council area boundary by Kelttybridge and retain five constituencies within Fife council area.
37. Option 1 retains the existing constituencies, offering continuity with the existing boundaries. Options 2, 2A and 3 all retain the existing North East Fife constituency.
38. Option 1 splits two wards across the council area although the Dunfermline North ward is only split in a small area with no electors. Options 2 and 2A split two wards. Option 3 avoids splitting any wards.
39. Options 1, 2 and 2A propose variation from the electoral quota for all constituencies within 10%. Option 3 proposes one constituency with variation from the electoral quota over 10%, Glenrothes at -11.5%.
40. Option 2 presents a cohesive Dunfermline constituency but the Cowdenbeath, Inverkeithing and Rosyth constituency stretches from Crombie on the Forth coast in the south west to Ballingry in the north of the constituency on the Perthshire border. Option 2A also proposes a Cowdenbeath, Inverkeithing and Rosyth constituency but it presents an improved boundary to the east of Burntisland that follows community council boundaries rather than minor roads.
41. Option 3 proposes the same Dunfermline constituency as in Option 2, a more compact Cowdenbeath constituency, a coastal Kirkcaldy constituency and a Glenrothes constituency that rather than stretching to the coast as the existing constituency does, includes the neighbouring ward of Lochgelly, Cardenden and Benarty (ward 8).
42. The constituency boundaries presented in Option 1 (Existing Constituencies) present compact, well recognised and uniform boundaries that also follow existing ward boundaries throughout the council area. The constituencies presented in Options 2, 2A and 3 are less compact in particular Option 2 and 2A Cowdenbeath, Inverkeithing and Rosyth constituency which is described above.

Conclusion

43. The Commission is invited to agree its Provisional Proposals in Fife council area for public consultation, subject to satisfactory constituencies being designed in other groupings.

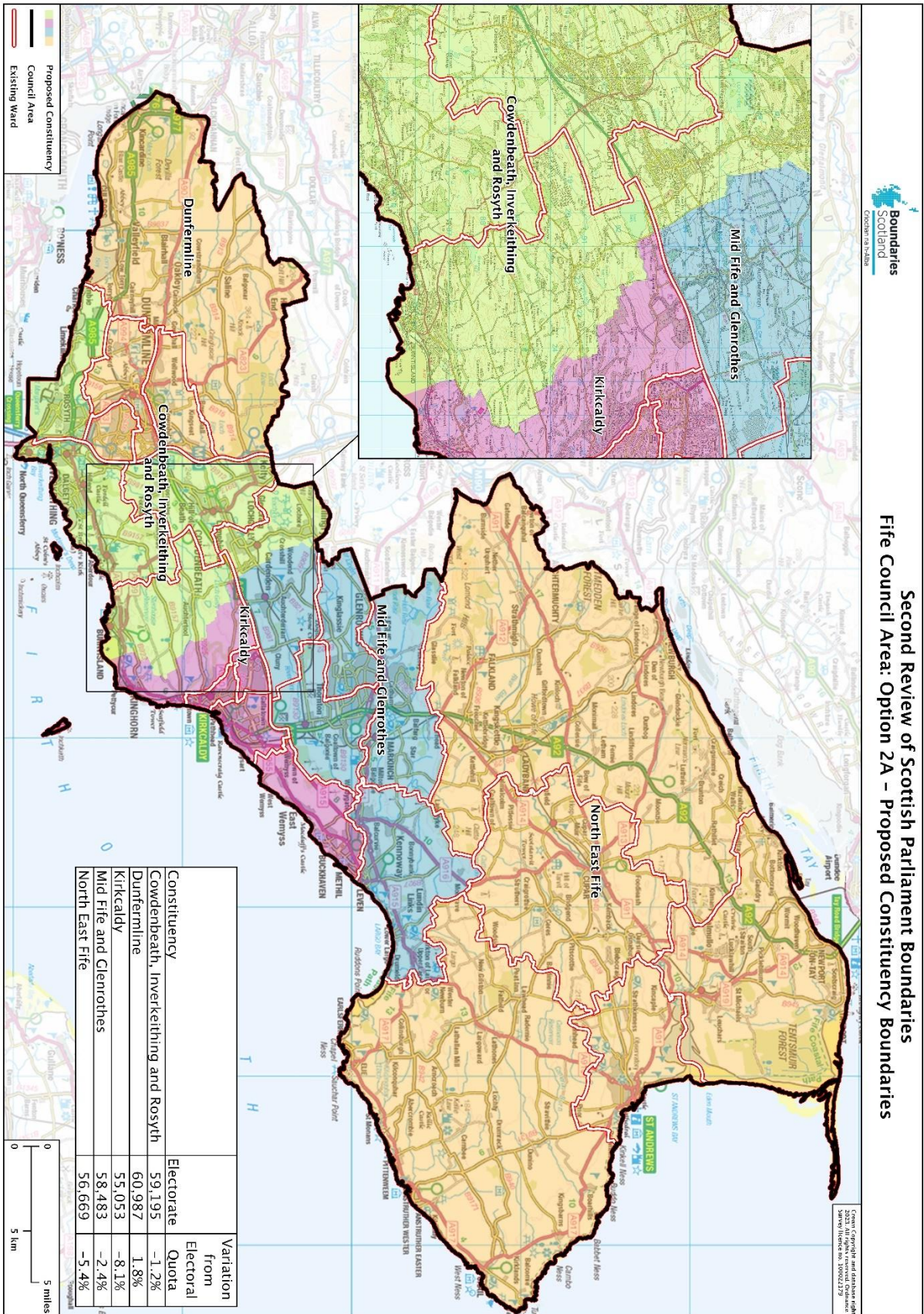




Boundaries Scotland
COUNCIL IN PARTNERSHIP

Second Review of Scottish Parliament Boundaries
Fife Council Area: Option 2 - Proposed Constituency Boundaries

© Crown Copyright and database right 2013. All rights reserved. Ordnance Survey Licence No. 100014239





Second Review of Scottish Parliament Boundaries
Fife Council Area: Option 3 - Proposed Constituency Boundaries

Constituency	Electorate	Variation from Electoral Quota
Dunfermline	60,987	1.8%
Cowdenbeath, Inverkeithing and Rosyth	55,954	-6.6%
Kirkcaldy	63,761	6.4%
Glenrothes	53,016	-1.5%
North East Fife	56,669	-5.4%

