

## Second Review of Scottish Parliament Boundaries Draft Provisional Proposals for East Ayrshire, North Ayrshire and South Ayrshire Council areas

### Action required

1. The Commission is invited to consider its Provisional Proposals for East Ayrshire, North Ayrshire and South Ayrshire Council areas for its Second Review of Scottish Parliament Boundaries.

### Background

2. The Commission considered provisional groupings of council areas as part of its approach to constituency design for the Second Review, which included a group of five constituencies contained wholly within East Ayrshire, North Ayrshire and South Ayrshire Council areas, (see Paper BS 24). This paper offers three options for constituencies within this grouping.
3. The electorate quota for the Second Review of Scottish Parliament Boundaries is 59,902 electors per constituency.
4. The rules for reviewing Scottish Parliament constituencies state:
  - **Rule 1**
    - So far as is practicable, regard must be had to the boundaries of the local government areas having effect from time to time under section 1 of the Local Government etc. (Scotland) Act 1994.
  - **Rule 2**
    - The electorate of a constituency must be as near the electoral quota as is practicable, having regard to Rule 1.
    - Boundaries Scotland may depart from the strict application of Rule 1 if it thinks that it is desirable to do so to avoid an excessive disparity between the electorate of a constituency and the electoral quota or between the electorate of a constituency and that of neighbouring constituencies.
  - **Rule 3**
    - Boundaries Scotland may depart from the strict application of Rules 1 and 2 if it thinks that special geographical considerations (including in particular the size, shape and accessibility of a constituency) render it desirable to do so.
  - **Rule 4**
    - Boundaries Scotland need not aim at giving full effect in all circumstances to Rules 1 to 3 but it must take account (so far as it reasonably can)—
      - (a) of the inconveniences attendant on alterations of constituencies other than alterations made for the purposes of Rule 1, and
      - (b) of any local ties which would be broken by such alterations.
5. The constituency entitlement for East Ayrshire, North Ayrshire and South Ayrshire Council areas is as shown in the table below:

Council area	Electorate (1 Sept 22)	Constituency entitlement
East Ayrshire	96,401	1.6
North Ayrshire	107,902	1.8
South Ayrshire	91,125	1.5
<b>Total</b>	<b>295,428</b>	<b>4.9</b>

6. The electorates of the five existing Scottish Parliament constituencies within East Ayrshire, North Ayrshire and South Ayrshire Council areas are shown in the table below:

Existing constituency	Electorate	Variation from electoral quota
Ayr	62,566	4.4%
Carrick, Cumnock and Doon Valley	59,218	-1.1%
Cunninghame North	56,604	-5.5%
Cunninghame South	51,298	-14.4%
Kilmarnock and Irvine Valley	65,742	9.7%

7. The existing Scottish Parliament boundaries have been in use since 2011.
8. One of the existing constituencies is out-with 10% of the electoral quota, Cunninghame South, and it is open to the Commission to leave it unchanged for the Second Review.
9. The constituency names in this paper are provisional. The Commission will have the opportunity to review all constituency names and designations prior to the publication of its Provisional Proposals.
10. A map of the existing constituencies in this grouping can be found at Appendix A.

### Options

11. Three options are presented for consideration.

#### Option 1

12. Option 1 proposes to retain the five existing constituencies within East Ayrshire, North Ayrshire and South Ayrshire Council areas.
13. The existing constituency boundaries follow ward boundaries in place at the time of the First Review, but the ward boundaries were altered following the 5<sup>th</sup> Reviews of Electoral Arrangements in 2017 and again in 2022 in North Ayrshire Council area.

Proposed constituencies	Electorate	Variation from electoral quota	Wards
Ayr	62,566	4.4%	South Ayrshire 1-5
Carrick, Cumnock and Doon Valley	59,218	-1.1%	East Ayrshire 7(part), 8-9 South Ayrshire 6-8
Cunninghame North	56,604	-5.5%	North Ayrshire 1-4, 5(part)
Cunninghame South	51,298	-14.4%	North Ayrshire 5(part), 6-9
Kilmarnock and Irvine Valley	65,742	9.7%	East Ayrshire 1-6, 7(part)

14. A map of Option 1 can be found at Appendix A.

15. The advantages of Option 1 are it:

- retains the existing constituencies, which have been in place since 2011 and may avoid confusion for the local electorate;
- proposes four constituencies that have variation from the electoral quota within 10%;
- proposes an Ayr constituency which maintains close links between Ayr, Prestwick and Troon; and
- considers council area boundaries, only one of the five constituencies overlaps a council area boundary – Carrick, Cumnock and Doon Valley.

16. The disadvantages of Option 1 are:

- one constituency overlaps the East Ayrshire and South Ayrshire council area boundary – Carrick, Cumnock and Doon Valley;
- Saltcoats and Stevenston sit in different constituencies, and it may break local ties between these neighbouring towns;
- Cunninghame South constituency has variation from the electoral quota of -14%.

### Option 1A

17. Option 1A is similar to Option 1 and the existing constituency boundaries.

18. Option 1A aims to minimise change to the existing constituency boundaries while addressing variation from electoral parity in the existing Cunninghame South constituency.

19. Option 1A retains three existing constituencies: Ayr; Carrick, Cumnock, and Doon Valley; and Cunninghame North.

20. Option 1A splits the East Ayrshire, Annick ward by following the centre of the M77 motorway. Dunlop, Kilmaurs and Stewarton, with approx. 10,800 electors are added to a Cunninghame South constituency.

21. A map of Option 1A can be found at Appendix B.

Proposed constituencies	Electorate	Variation from electoral quota	Wards
Ayr	62,566	4.4%	South Ayrshire 1-5
Carrick, Cumnock, and Doon Valley	59,218	-1.1%	East Ayrshire 7(part), 8-9 South Ayrshire 6-8
Cunninghame North	56,604	-5.5%	North Ayrshire 1-4, 5(part)
Cunninghame South	62,113	3.7%	East Ayrshire 1(part), North Ayrshire 5(part), 6-9
Kilmarnock and Irvine Valley	54,927	-8.3%	East Ayrshire 1 (part), 2-6, 7(part)

22. The advantages of Option 1A are:

- it retains three of the existing constituencies, which have been in place since 2011 and may avoid confusion for the local electorate;
- creates an easily identifiable boundary, the M77 motorway;

- all five constituencies are within 10% variation from the electoral quota; and
- proposes an Ayr constituency which maintains close links between Ayr, Prestwick, and Troon.

23. The disadvantages of Option 1A are:

- two constituencies overlap a council area boundary – Carrick, Cumnock and Doon Valley and Cunninghame South;
- Saltcoats and Stevenston sit in different constituencies, and it may break local ties between these neighbouring towns; and
- Kilmaurs and Stewarton may look towards Kilmarnock rather than Irvine or Kilwinning.

### Option 2

24. Option 2 proposes a constituency design based on ward boundaries. Option 2 proposes five new constituencies.

25. A map of Option 2 can be found at Appendix C.

Proposed constituencies	Electorate	Variation from electoral quota	Wards
Cunninghame North	63,565	6.1%	North Ayrshire 1–5
Cunninghame South	56,790	-5.2%	East Ayrshire 1 North Ayrshire 6–9
Kilmarnock and Irvine Valley	53,105	-11.3%	East Ayrshire 2–6
Carrick, Cumnock and Doon Valley	66,672	11.3%	South Ayrshire 1, 2, 6 East Ayrshire 7–9
Ayr	55,296	-7.7%	South Ayrshire 3–5, 7–8

26. The advantages of Option 2 are it:

- avoids splitting any wards; and
- Saltcoats and Stevenston sit within the same constituency.

27. The disadvantages of Option 2 are it:

- does not retain any of the existing constituencies;
- proposes two constituencies with variation from the electoral quota over 10%;
- may break close links between Ayr, Prestwick and Troon;
- two constituencies overlap a council area boundary – Cunninghame South and Carrick, Cumnock and Doon Valley;
- Stewarton and Kilmaurs may look towards Kilmarnock rather than Irvine or Kilwinning.

### Summary

28. Option 1 retains all five of the existing constituencies, offering continuity with the existing boundaries. Option 1A retains three of the existing constituencies. Option 2 proposes five new constituencies.

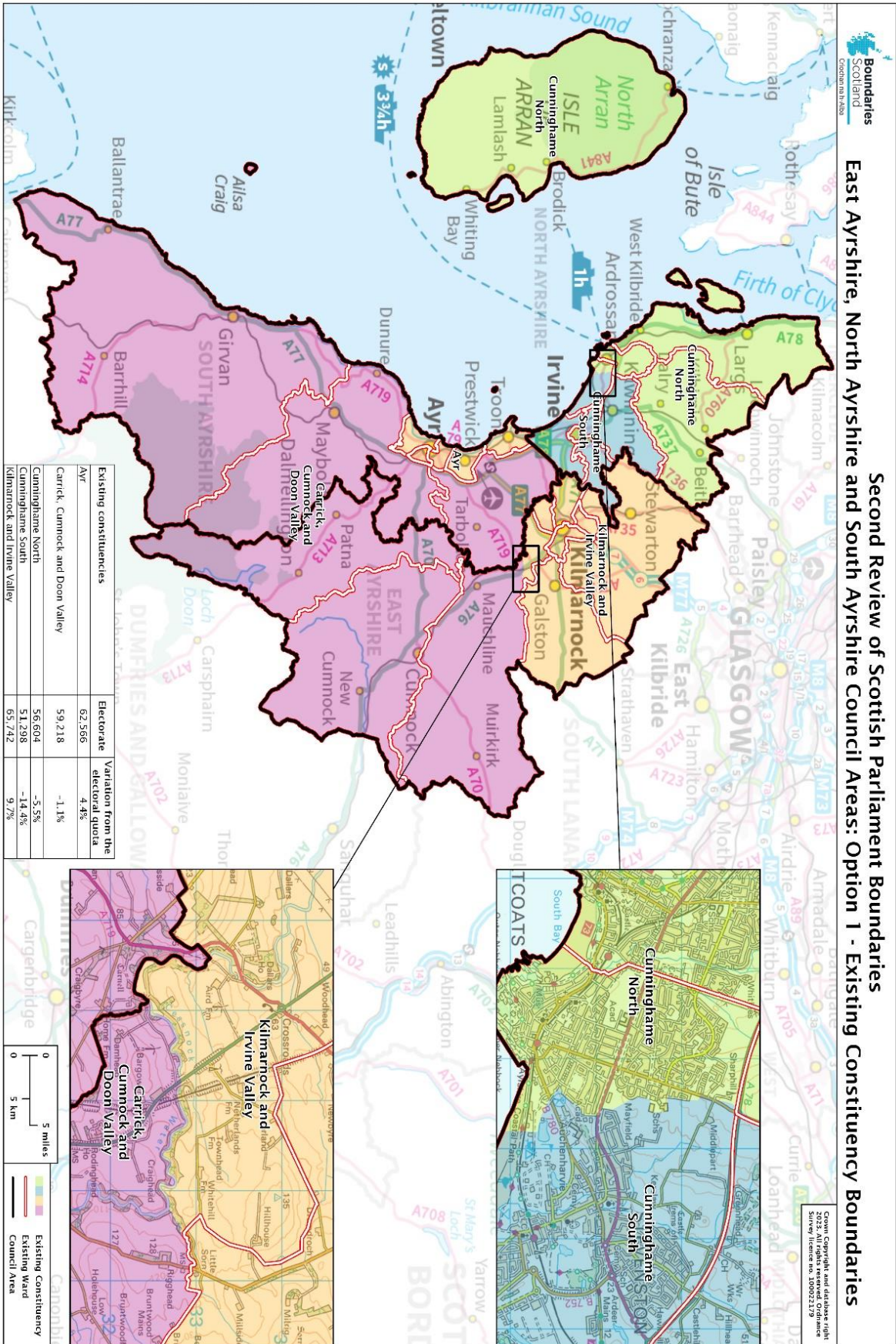
29. Option 1 proposes one constituency which overlaps a council area boundary. Option 1A and Option 2 both propose two constituencies which overlap a council area boundary.

30. Option 1 splits two wards between constituencies. Option 1A splits three wards. Option 2 avoids splitting any wards.
31. Option 1 proposes one constituency out-with 10% variation from the electoral quota. Option 2 proposes two constituencies out-with 10% variation from the electoral quota. Option 1A proposes all five constituencies within 10% variation from the electoral quota.
32. Options 1 and 1A both retain links between Ayr, Prestwick and Troon but may break local ties between Saltcoats with Stevenston. Option 1A may break local ties between: Kilmaurs, Stewarton and Kilmarnock. Option 2 may break local ties between: Stewarton, Kilmaurs and Kilmarnock; and Ayr, Prestwick, and Troon.

**Conclusion**

33. The Commission is invited to agree its Provisional Proposals for public consultation, subject to satisfactory constituencies being designed in other groupings.

**Secretariat**  
**February 2023**



Boundaries Scotland  
Copyright © 2014

Second Review of Scottish Parliament Boundaries  
East Ayrshire, North Ayrshire and South Ayrshire Council Areas: Option 1 - Existing Constituency Boundaries

Scottish Parliament  
Copyright © 2014  
Survey licence no. 100922179

