

**Second Review of Scottish Parliament Boundaries
Draft Provisional Proposals for Aberdeen City, Aberdeenshire, Angus and
Moray Council areas**

Action required

1. The Commission is invited to consider its Provisional Proposals for Aberdeen City, Aberdeenshire, Angus and Moray council areas for its Second Review of Scottish Parliament Boundaries.

Background

2. The Commission previously considered Provisional Proposals for Aberdeen City, Aberdeenshire, Angus and Moray Council areas at its meeting of 9 February 2023, see BS Paper 34 and its meeting of 9 March 2023, see BS Paper 38.
3. At the March 2023 meeting the Commission considered the two options presented and agreed that Option 1A was an acceptable arrangement but prior to agreeing it they asked the Secretariat to further refine the boundary in the Aberdeenshire Central Buchan ward, by Maud/ Mintlaw, to ensure the boundary followed the A950 road.
4. The electorate quota for the Second Review of Scottish Parliament Boundaries is 59,902 electors per constituency.
5. The constituency entitlement for Aberdeen City, Aberdeenshire, Angus and Moray council areas is 8.9 or rounded up to 9 constituencies.

Options

6. Two options are presented for consideration. Option 1A, the preferred Option from Paper 38 and a Revised Option 1A which further amends the agreed constituency boundaries by Maud/Mintlaw in Aberdeenshire.
7. The constituency names in this paper are provisional. The Commission will have the opportunity to review all constituency names and designations prior to the publication of its Provisional Proposals.

Option 1A

8. Option 1A from Paper 38 is similar to the existing arrangements, but amends the constituency boundaries by Maud/ Mintlaw, to the west of Peterhead.
9. Option 1A amends the boundary between the Aberdeenshire East constituency and Banffshire and Buchan Coast constituency. The Central Buchan ward is split by following a community council area boundary and transfers approx. 2,500 electors between those constituencies.

10. A map of Option 1A can be found at Appendix A.

Proposed constituencies	Electorate	Variation from electoral quota	Wards
Aberdeenshire East	61,702	3.0%	Aberdeenshire 4(part), 6(part), 7-9, 11, 12(part)
Banffshire and Buchan Coast	60,957	1.8%	Aberdeenshire 1-3, 4(part), 5, 6(part). Moray 2(part), 3

11. The advantages of Option 1A are it:

- minimises change by amending the boundary of only two existing constituencies, which have been in place since 2011 and may avoid confusion for the local electorate; and
- improves variation from the electoral quota for both constituencies in comparison with the existing constituencies.

12. The disadvantages of Option 1A are it makes changes where all of the proposed constituencies are within 10% variation from the electoral quota.

Revised Option 1A

13. Revised Option 1A is similar to Option 1A, but it follows the A950 road by Maud/Mintlaw, to the west of Peterhead.

14. A map of Revised Option 1A can be found at Appendix B.

Proposed constituencies	Electorate	Variation from electoral quota	Wards
Aberdeenshire East	60,116	0.4%	Aberdeenshire 4(part), 6(part), 7-9, 11, 12(part)
Banffshire and Buchan Coast	62,543	4.4%	Aberdeenshire 1-3, 4(part), 5, 6(part). Moray 2(part), 3

15. The advantages of Revised Option 1A are it:

- minimises change by amending the boundary of only two existing constituencies, which have been in place since 2011 and may avoid confusion for the local electorate; and
- improves variation from the electoral quota for both constituencies in comparison with the existing constituencies.

16. The disadvantages of Revised Option 1A are it:

- makes changes where all of the proposed constituencies are within 10% variation from the electoral quota; and
- splits Mintlaw between two constituencies.

17. Following the A950 road splits Mintlaw between two constituencies. However the Commission could consider extending the boundary to the north or south of Mintlaw.

18. Extending the boundary to the north of Mintlaw by following the Mintlaw Community Council boundary would propose the constituencies below. See map at Appendix B with dashed line.

Proposed constituencies	Electorate	Variation from electoral quota	Wards
Aberdeenshire East	60,667	1.3%	Aberdeenshire 4(part), 6(part), 7-9, 11, 12(part)
Banffshire and Buchan Coast	61,992	3.5%	Aberdeenshire 1-3, 4(part), 5, 6(part). Moray 2(part), 3

19. Extending the boundary to the south of Mintlaw by following the Community Council boundary would propose the constituencies below. See map at Appendix B with dashed line.

Proposed constituencies	Electorate	Variation from electoral quota	Wards
Aberdeenshire East	58,268	-2.7%	Aberdeenshire 4(part), 6(part), 7-9, 11, 12(part)
Banffshire and Buchan Coast	64,391	7.5%	Aberdeenshire 1-3, 4(part), 5, 6(part). Moray 2(part), 3

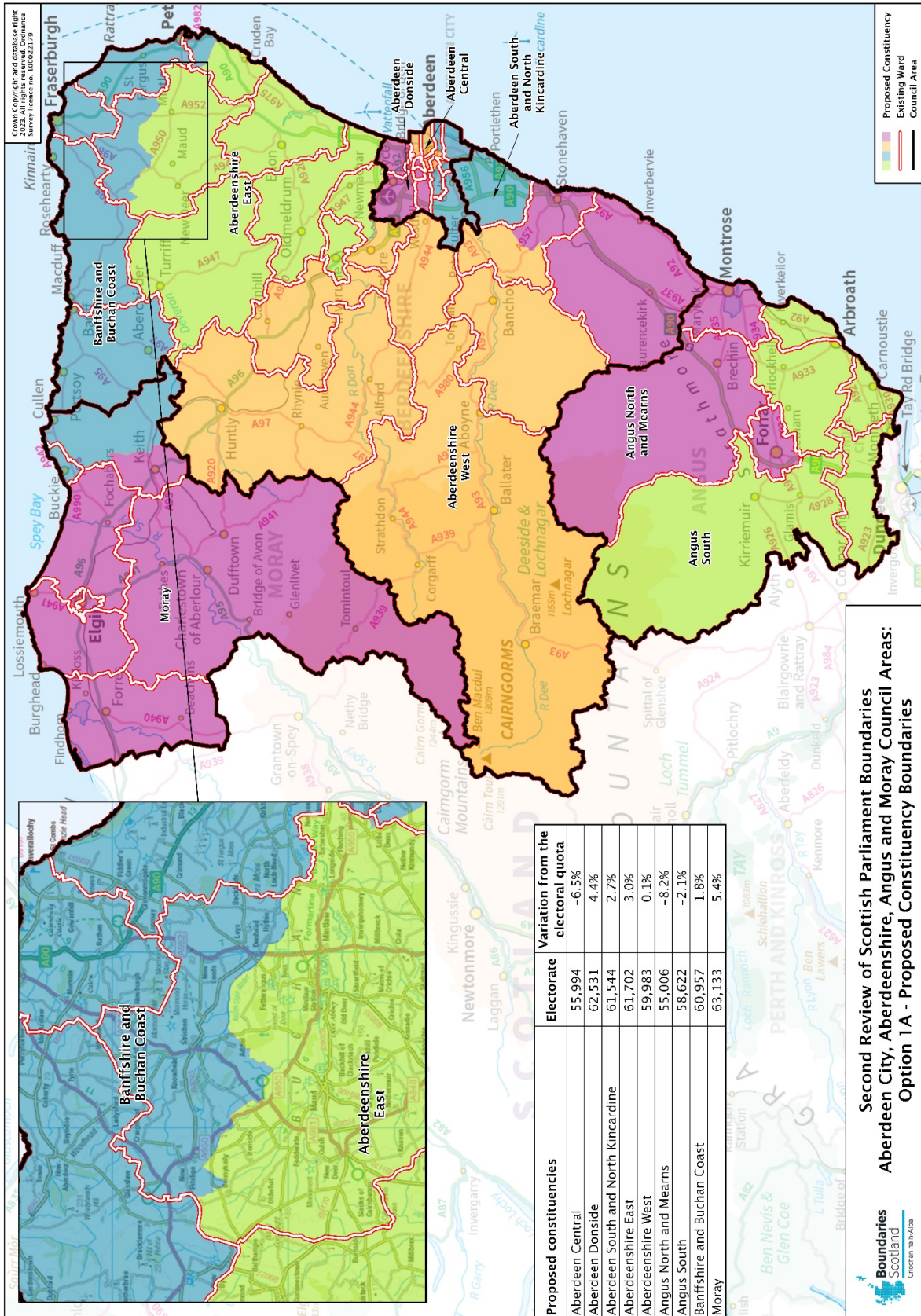
Summary

20. The Commission preferred Option 1A, from Paper 38 but asked the Secretariat to refine the boundary by Mintlaw.
21. Option 1A had amended the proposed boundaries in Central Buchan placing the community council areas of New Pitsligo and Strichen and District in the proposed Banffshire and Buchan Coast constituency.
22. A Revised Option 1A follows the A950 road, a recognised boundary, but it splits the town of Mintlaw and its community council area between two constituencies.
23. The Commission could propose a boundary to the north or south of Mintlaw to avoid splitting the village between constituencies by following the community council area boundary.
24. All options propose constituencies within 10% variation from the electoral quota.

Conclusion

25. The Commission is invited to agree its Provisional Proposals for public consultation, subject to satisfactory constituencies being designed in other groupings.

Secretariat
March 2023



Second Review of Scottish Parliament Boundaries
Aberdeen City, Aberdeenshire, Angus and Moray Council Areas:
Option 1A - Proposed Constituency Boundaries



