

Second Review of Scottish Parliament Boundaries
Consideration of responses to consultation on provisional proposals for
constituency boundaries –
City of Edinburgh, East Lothian, Midlothian and West Lothian Council areas

Action required

1. The Commission is invited to consider responses to the consultation on its provisional proposals and whether it wishes to make changes to its proposals for City of Edinburgh, East Lothian, Midlothian and West Lothian Council areas.

Background

2. The electorates of the eleven existing Scottish Parliament constituencies within East Lothian, Midlothian and West Lothian Council areas are shown in the table below. The existing Midlothian South, Tweeddale and Lauderdale constituency also includes part of Scottish Borders Council area.

Existing constituencies	Electorate	Variation from electoral quota	Wards
Almond Valley	70,119	17.1%	West Lothian 3,4,5,6,7(part)
East Lothian	67,523	12.7%	East Lothian 2,3(part),4,5,6
Edinburgh Central	65,240	8.9%	Edinburgh 5, 6(part), 7(part), 9(part), 10(part), 11, 15(part)
Edinburgh Eastern	72,512	21.1%	Edinburgh 14(part),16(part),17(part)
Edinburgh Northern and Leith	74,827	24.9%	Edinburgh 4,5(part),12,13,14(part)
Edinburgh Pentlands	59,274	-1.0%	Edinburgh 2,7(part),8,9(part)
Edinburgh Southern	62,786	4.8%	Edinburgh 9(part), 10(part), 15(part), 16(part), 17(part)
Edinburgh Western	65,827	9.9%	Edinburgh 1,3,5(part),6(part)
Linlithgow	76,337	27.4%	West Lothian 1,2,7(part)8,9
Midlothian North and Musselburgh	70,498	17.7%	East Lothian 1,3(part) Midlothian 2,3,4(part),5
Midlothian South, Tweeddale and Lauderdale	64,697	8.0%	Midlothian 1, 4(part), 6 Scottish Borders 1,2,3,5

3. The electorate of five of the existing constituencies is over 15% variation from the electorate quota and three of those are above 20%.
4. The provisional proposals aimed to adhere to the principles of the review. The provisional proposals: improved variation from the electoral quota from the existing arrangements; aimed to minimise change to the existing boundaries while proposing a new grouping of constituencies; and considered local ties.
5. The provisional proposals made changes to all of the existing constituency boundaries due to the large electorate growth in all areas. The provisional proposals included an Edinburgh Forth and Linlithgow constituency that included parts of Edinburgh and West Lothian and proposed a Midlothian North and Musselburgh constituency that contained parts of three council areas (East Lothian, Midlothian and City of Edinburgh).
6. The electorate and entitlement to constituencies for this grouping of council areas is shown in the table below.

Council Area	Electorate (1 Sept 22)	Constituency theoretical entitlement
City of Edinburgh	400,466	6.7
East Lothian	88,539	1.5
Midlothian	76,131	1.3
West Lothian	146,456	2.4

7. Together this grouping is entitled to 11.9 constituencies.
8. The electorate of the neighbouring council areas and their theoretical entitlement to constituencies is shown in the table below.

Council Area	Electorate (1 Sept 22)	Constituency theoretical entitlement
Scottish Borders	93,179	1.6
Falkirk	125,390	2.1
South Lanarkshire	258,377	4.3
North Lanarkshire	264,752	4.4

9. East Lothian Council responded to the consultation and opposed the proposals and asked for a local inquiry. Midlothian Council responded to the consultation and did not object to the proposals but did suggest alternative constituency names. West Lothian Council advised they considered the proposals but did not submit an official response. City of Edinburgh Council did not respond to the consultation as they did not have an agreed position on the proposals.
10. The electorates of the 12 proposed Scottish Parliament constituencies within City of Edinburgh, East Lothian, Midlothian and West Lothian Council areas are shown in the table below:

Constituency Name	Electorate	Variation from Electoral Quota	Wards
Bathgate and Almond Valley	61,257	2.3%	West Lothian 6,7,8,9
East Lothian	59,385	-0.9%	East Lothian 2(part),3(part),4,5,6
Edinburgh Central	59,203	-1.2%	Edinburgh 11,12(part),15
Edinburgh Eastern	64,870	8.3%	Edinburgh 14,16,17(part)
Edinburgh Forth and Linlithgow	55,866	-6.7%	West Lothian 1,2 Edinburgh 1(part)
Edinburgh Northern and Leith	59,650	-0.4%	Edinburgh 4,12(part),13
Edinburgh Pentlands	55,545	-7.3%	Edinburgh 1(part), 2, 3(part), 7(part), 8(part), 9(part)
Edinburgh Southern	60,377	0.8%	Edinburgh 7(part), 8(part), 9(part), 10
Edinburgh Western	59,884	0.0%	Edinburgh 3(part),5,6
Livingston	56,009	-6.5%	West Lothian 3,4,5
Midlothian North and Musselburgh	55,122	-8.0%	East Lothian 1,2(part),3(part) Midlothian 3 Edinburgh 17 (part)
Midlothian South	64,424	7.5%	Midlothian 1, 2, 4-6

11. A map of the provisional proposals is at Appendix A.

12. The rules for reviewing Scottish Parliament constituencies state:

- **Rule 1**

- So far as is practicable, regard must be had to the boundaries of the local government areas having effect from time to time under section 1 of the Local Government etc. (Scotland) Act 1994.
- **Rule 2**
 - The electorate of a constituency must be as near the electoral quota as is practicable, having regard to Rule 1.
 - Boundaries Scotland may depart from the strict application of Rule 1 if it thinks that it is desirable to do so to avoid an excessive disparity between the electorate of a constituency and the electoral quota or between the electorate of a constituency and that of neighbouring constituencies.
- **Rule 3**
 - Boundaries Scotland may depart from the strict application of Rules 1 and 2 if it thinks that special geographical considerations (including in particular the size, shape and accessibility of a constituency) render it desirable to do so.
- **Rule 4**
 - Boundaries Scotland need not aim at giving full effect in all circumstances to Rules 1 to 3 but it must take account (so far as it reasonably can)—
 - (a) of the inconveniences attendant on alterations of constituencies other than alterations made for the purposes of Rule 1, and
 - (b) of any local ties which would be broken by such alterations.

Local Inquiry

13. In their response to the consultation, East Lothian Council objected to the provisional proposals for the East Lothian and Midlothian North and Musselburgh constituencies and requested a local inquiry, as did Prestonpans Labour Club, East Lothian Labour, Scottish Labour and two members of public. In addition around 100 responses opposed the proposed Edinburgh Forth and Linlithgow constituency.

Representations received

14. 276 responses were received for these constituencies during the one-month consultation period. All responses have been shared with the Commission. Responses to the consultation will be available on the Commission's consultation site www.consult.boundaries.scot if the respondent gave permission to do so.

Summary of responses

15. Suggestions and comments received during the initial consultation included:

- opposition to the proposed Edinburgh Forth and Linlithgow constituency because the west of Edinburgh has little in common with West Lothian;
- opposition to the breaking of local ties within the south of Edinburgh; and
- opposition to placing Musselburgh and Prestonpans in a constituency with parts of City of Edinburgh and Midlothian Council areas.

16. The maps in this paper show alternative suggestions in block colours, existing ward boundaries are red and initial proposal boundaries are a black line unless otherwise stated.

Edinburgh Consultation Responses and Analysis

17. There were nearly 200 responses from members of the public regarding the provisional proposals for City of Edinburgh Council area, with most comments relating to the proposed Edinburgh Forth and Linlithgow constituency. They opposed:

- linking ward 1 (Almond), which includes Muirhouse and Pilton, with parts of West Lothian due to a lack of local ties between the two areas;
- the proposals for Edinburgh South, in particular Newington, Sciennes, Colinton and Fairmilehead, as they broke long standing links and community ties; and
- the proposed Edinburgh Central constituency on the grounds that it breaks local ties in Gorgie and Dalry.

18. Approximately 90 members of the public opposed the proposed Edinburgh Forth and Linlithgow constituency. They raised the following concerns and issues:

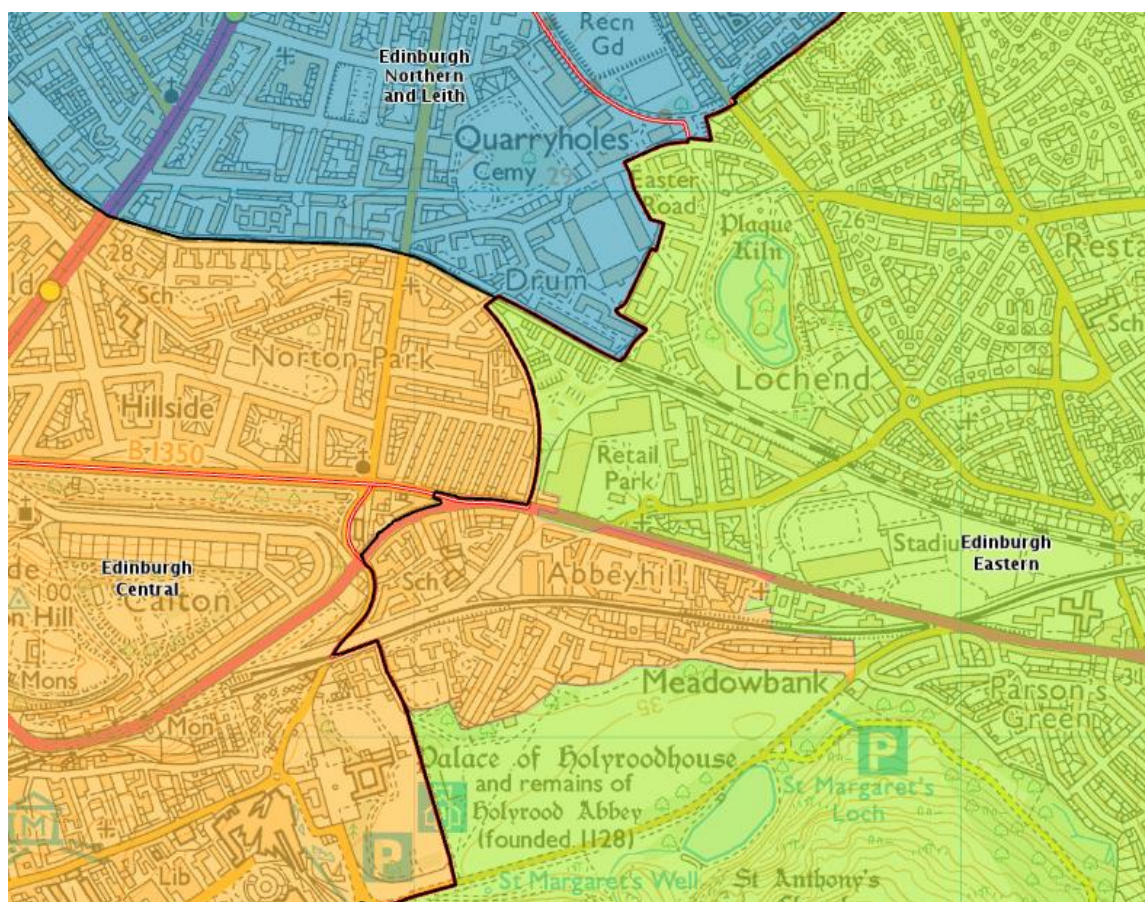
- a feeling that parts of Edinburgh are being lumped in with West Lothian creating a constituency that is part urban and part rural;
- Cramond and other parts of the west of Edinburgh should remain in an Edinburgh constituency;
- a belief that the broad geographical area will dilute representation for the city-based parts of the constituency;
- opposition to Kirkliston and Queensferry being aligned with West Lothian rather than Edinburgh;
- local ties in Davidson's Mains and surrounding areas would be broken;
- concern that such a diverse area including rural areas in West Lothian and parts of the City of Edinburgh would be difficult to represent;
- Muirhouse residents belong to Edinburgh North and not Edinburgh West or West Lothian; and
- cross council constituencies are hard to administer and represent.

19. Approximately 50 members of the public opposed the proposed Edinburgh Southern constituency. They raised the following concerns and issues:
- splitting the existing Colinton/Fairmilehead ward between constituencies would break long standing local ties based on transport, schooling and shared amenities;
 - the existing boundary is well designed with strong natural boundaries and is recognised as running east to west;
 - all electoral boundaries should be more coterminous;
 - concern that neighbouring areas such as Sciennes and Marchmont will be split despite sharing a community council; and
 - a belief that Newington looks more to the south of the city, rather than Gorgie and Dalry which should be retained within a central constituency.
20. Approximately 10 members of the public opposed the proposals for an Edinburgh Central constituency. They raised the following concerns and issues:
- the whole of Abbeyhill should be in an Edinburgh Central constituency;
 - Gorgie, Dalry and parts of Fountainbridge should be retained within an Edinburgh Central constituency;
 - Newington, Grange and Blackford do not identify as part of Edinburgh Central; and
 - general opposition to the Edinburgh Central boundary.
21. The remaining responses regarding the other Edinburgh constituencies contained a variety of comments which raised the following concerns and issues:
- opposition to placing Portobello and Joppa in a Midlothian North and Musselburgh constituency on the grounds of difficulty in representing a constituency made up of three council areas and the failure to recognise an Edinburgh neighbourhood in the constituency name;
 - opposition to the breaking up of the Gyle ward in Edinburgh West which would break long standing boundaries;
 - residents in the existing Edinburgh Pentlands constituency citing a lack of ties with the proposed Edinburgh Southern constituency; and
 - opposition to the Edinburgh Pentlands constituency necessitating the split of the Colinton/Fairmilehead ward.
22. One response opposed splitting the Edinburgh community of Abbeyhill between two constituencies, they suggested Abbeyhill should remain in a Central Edinburgh constituency.
23. City of Edinburgh Councils Natural Neighbourhoods
<https://data.edinburghcouncilmaps.info/datasets/9961be54aa5649aebfb5f2cde53fa43>

[2/explore](#)) defines the eastern part of the neighbourhood of Abbeyhill as shown in the map below as the area projecting east in to the Edinburgh Eastern constituency.

24. To accommodate this change 1,600 electors in the Craigentenny/Duddingston ward are transferred from Edinburgh East to Edinburgh Central. It should be noted that historical ward boundaries in the area have consistently split the area of Abbeyhill.

25. A map of the suggestion and a supporting table are shown below.



Constituency Name	Electorate	Variation from electoral quota	Wards
Edinburgh Central	60,804	1.5%	11, 12(part), 14(part), 15
Edinburgh Eastern	63,269	5.6%	14(part), 17(part), 16

26. The advantages of this suggestion are it improves the variation from electoral quota for the Edinburgh Eastern constituency, the Edinburgh Central

constituency goes from -1.2% to 1.5% (Rule 2) and may better reflect local ties (Rule 4).

27. The disadvantages of this selection are it splits a further ward and may break local ties (Rule 4).

28. A member of the public suggested extending the proposed Edinburgh Pentlands constituency northwards into ward 1 (Almond) and making changes in the west and centre of Edinburgh to accommodate this. They suggested that having constituencies containing parts of different council areas and communities with little in common should be avoided.

29. A map of the suggestion is at Appendix B and a table is below.

Constituency Name	Electorate	Variation from electorate quota	Wards
Edinburgh Central	63,725	6.4%	5(part),6(part),11,12(part)
Edinburgh Eastern	64,870	8.3%	14,16,17(part)
Edinburgh Forth and Pentland	62,037	3.6%	1,2,5(part),8(part)
Edinburgh Northern and Leith	64,650	7.9%	4,12(part),13
Edinburgh South West	67,971	13.5%	3,6(part),7,9
Edinburgh Southern	62,952	5.1%	8(part),10,15

30. The advantages of this suggestion are it proposes six constituencies wholly within City of Edinburgh Council area and minimises the number of split wards and may avoid the breaking of local ties (Rule 4).

31. The disadvantages of this selection are:

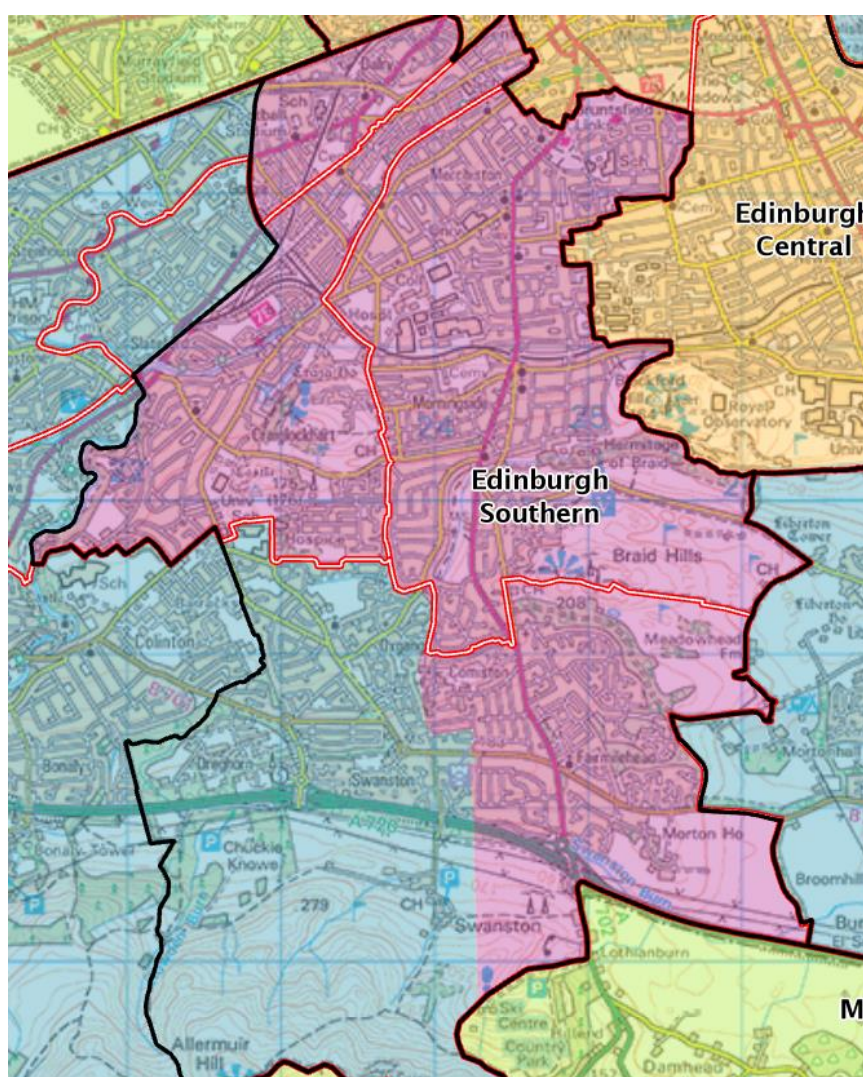
- it solely focusses on Edinburgh and does not consider the wider grouping; and
- creates an Edinburgh Forth and Pentland constituency that stretches from Muirhouse to Balerno.

32. Councillor Marco Biagi, ward 8 (Colinton/Fairmilehead), agreed that whilst there is a need in Edinburgh to adjust the constituency boundaries, he suggested that if ward 8 is to be split it should be split along the same lines as the UK Parliament boundary. Cllr Biagi believed his suggestion would maintain local ties

such as: uniting the armed forces communities in Redford and Dregghorn barracks rather than dividing them; uniting Colinton Mains and Oxfangs who share school catchments and local supermarkets; increase simplicity for electors in having coterminous UK and Scottish Parliament constituency boundaries; and avoid increasing the number of polling districts and polling stations.

33. His suggestion would transfer 7,579 electors from an Edinburgh South constituency to an Edinburgh Pentlands constituency.

34. A map of this suggestion and a table of the affected constituencies can be seen below.



Constituency Name	Electorate	Variation from electoral quota	Wards
Edinburgh Pentlands	63,124	5.4%	1(part), 2,3(part)7(part) 8(part),9(part)
Edinburgh Southern	52,798	-11.9%	7(part),8(part),9(part),10

35. The advantages of this suggestion are:

- the suggested boundary of the split Colinton/Fairmilehead ward follows an existing UK Parliament boundary and may therefore be more recognisable (Rule 4); and
- it may better reflect local ties (Rule 4).

36. The disadvantages of this selection are it worsens variation from the electoral quota in the Edinburgh Southern constituency with variation greater than $\pm 10\%$ (Rule 2).

37. Councillor Jason Rust, ward 8 (Colinton/Fairmilehead), opposed the proposed division of their ward between the proposed Edinburgh Pentlands and Edinburgh Southern constituencies. Cllr Rust stated the proposed boundary would impact the local area in similar terms to those expressed by Cllr Biagi. Cllr Rust believed the proposed boundary would:

- not be an improvement on the current Edinburgh Pentlands and Edinburgh Southern boundary which is coterminous with the ward boundary;
- break ties between Colinton and Swanston/Fairmilehead and split Colinton by Dreghorn;
- break local ties such as those people in Colinton who use local services in Oxbgangs;
- split the ward that sits at the foot of the Pentland Hills and enjoys a close association with other communities in similar positions such as Juniper Green; and
- place Dreghorn Barracks which has a long association with Edinburgh Pentlands and Colinton in an Edinburgh Southern constituency.

38. Councillor Denis Dixon, ward 7 (Sighthill/Gorgie), opposed the proposals because they placed parts of Dalry and Gorgie in an Edinburgh Southern constituency. Cllr Dixon expressed a preference for the status quo.

39. The existing Edinburgh Southern constituency has a variation from the electoral quota of 5%, however other Edinburgh constituencies have a variation from the electoral quota more than 20% therefore some changes to the existing Edinburgh constituency boundaries are likely.

40. Ian Murray MP (Edinburgh South) objected to the proposals on practical, geographical and cultural grounds. Mr Murray went on to state that an element of coterminosity between the Westminster and Holyrood constituencies would be

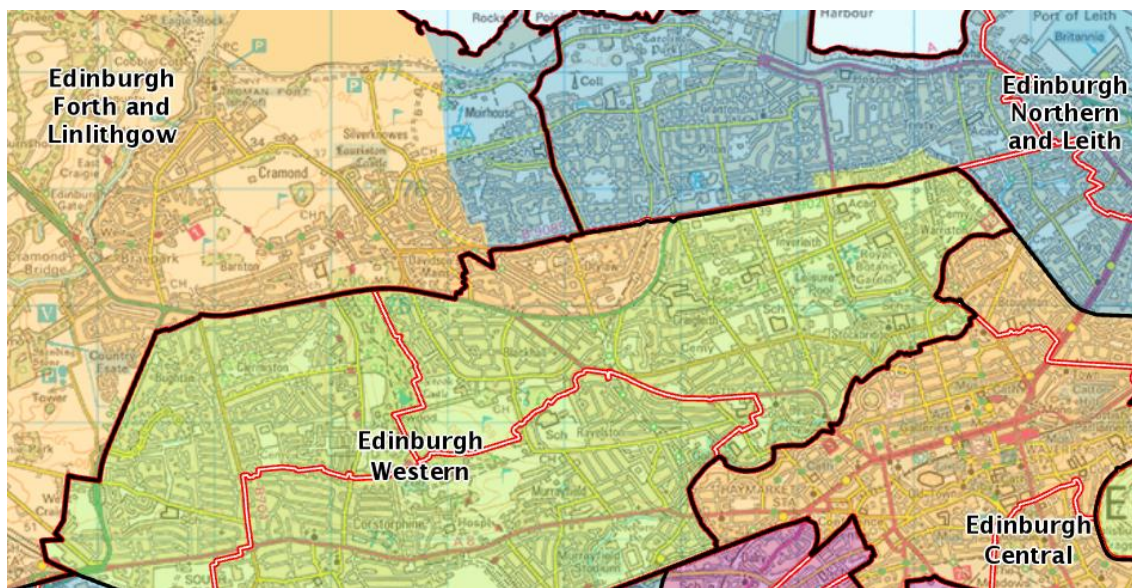
advantageous as constituents can be easily referred between the two offices when bringing forward casework that is either devolved or reserved. Mr Murray expressed the view that his constituency will now be split over three Scottish Parliament constituencies which will make working in partnership with MSPs more difficult.

41. There are 73 Scottish Parliament constituencies and from 2024 there will be 57 UK Parliament constituencies. Therefore, it is unlikely to have any coterminous constituencies given the strictures of the legislative rules which govern constituency design.
42. Daniel Johnson MSP for Edinburgh Southern wished to retain his existing constituency boundary because it is within the electoral quota. He recognised the electorate growth elsewhere in Edinburgh but suggested that constituency boundary changes should be made elsewhere. He stated the constituency is unrecognisable from the original seat created 24 years ago. He suggested that electoral boundaries for UK and Scottish Parliament boundaries should closely follow ward boundaries to avoid voter confusion and instil a sense of stability in electoral representation. He feels that many parts of the proposed Edinburgh Central constituency belong to the south of Edinburgh, while Gorgie and Dalry belong to the centre rather than the south.
43. Edinburgh Labour Group and Edinburgh Southern Constituency Labour Party stated: the provisional proposals fail to consider all of the review rules except for electoral quota and do not align with local authority boundaries; there is little to connect electors in the north or south of the constituency; the proposals do not consider the Edinburgh Southern boundaries from 1999–2011; the Edinburgh Southern constituency will contain an additional part ward than at present and that the lack of coterminosity with other electoral boundaries will create voter confusion; a Southside/Newington ward has been located within the Edinburgh South UK Parliament constituency since 1884 and that the proposals will sever this historical link; and the community of Chessers will have been in three Scottish Parliament constituencies – Central, Southern and Pentlands since the Parliament was created.
44. Mayfield Salisbury Parish Church (Church of Scotland) stated they are separate and distinct from the city centre.
45. Morningside Parish Church (Church of Scotland) wish no change to the existing boundaries because the UK and Scottish Parliamentary constituencies broadly overlap.

46. Angus Robertson MSP for Edinburgh Central stated the proposed Edinburgh Southern and Edinburgh Central constituencies would break local ties and asked that the Commission consider alternative designs whereby the central Edinburgh communities of Gorgie, Dalry and Fountainbridge remain in an Edinburgh Central constituency and the southern Edinburgh communities, including the Grange, Mayfield and Blackford remain in Edinburgh South.
47. Edinburgh Central SNP Branch stated that their members who reside in Gorgie, Dalry and Fountainbridge look towards the city-centre rather than the south. They believe Gorgie, Dalry and Fountainbridge are not “residential suburbs”, but part of the historic city of Edinburgh and wish to remain within an Edinburgh Central constituency. They also stated the Grange, Mayfield and Blackford areas look towards the south rather than the city centre and that any changes to the boundaries would affect their membership who are grouped by constituency. They offered no alternative suggestion other than the retention of Gorgie, Dalry and Fountainbridge in a central Edinburgh constituency.
48. From 1970 – 2005 Gorgie and Dalry were in an Edinburgh Central UK Parliament constituency and have been in an Edinburgh Central Scottish Parliament constituency since 1999.
49. The existing constituencies of Edinburgh Central and Edinburgh Southern have +8.9% and +4.5% variation from the electoral quota respectively. The Commission could consider retaining these two constituencies but given Edinburgh North and Leith and Edinburgh Eastern are both more than +20% variation from the electoral quota, changes to the existing constituency boundaries in Edinburgh are likely.
50. Citizens Advice Edinburgh stated “the Muirhouse community is one of the most deprived areas of Scotland and as a result, requires a level of focus and attention, that I feel can be best achieved with it remaining as part of the Edinburgh Northern and Leith Burgh Constituency.” Including Muirhouse in a West Lothian constituency would “serve to undermine and neglect the integrated and collaborative support and attention this community requires.”
51. The Community Renewal Trust – an Edinburgh based charity – suggested placing Muirhouse in an Edinburgh Northern and Leith constituency because Muirhouse, Pennywell and Pilton are closely connected as some of the most deprived areas in Edinburgh. They outlined splitting these communities would no longer align them with North Edinburgh, an area recognised by health and social care

services and community groups. They also stated Muirhouse has nothing to link it with Linlithgow. They submitted an alternative suggestion that they admit solely focuses on Muirhouse, it adds Drylaw to an Edinburgh Forth and Linlithgow constituency because they are closer to Silverknowes than Muirhouse and it adds west Trinity to an Edinburgh Western constituency as they are less obviously part of Northern and Leith and more connected to Inverleith/ Warriston.

52.A map and a table of this suggestion is shown below.



Constituency Name	Electorate	Variation from Electoral Quota	Wards
Edinburgh Forth and Linlithgow	55,579	-7.2%	West Lothian 1,2 Edinburgh 1(part), 5(part)
Edinburgh Northern and Leith	58,683	-2.0%	Edinburgh 1(part), 4(part), 12(part), 13
Edinburgh Western	56,743	-5.3%	Edinburgh 3(part), 4(part), 5(part),6

53.The advantages of this suggestion are:

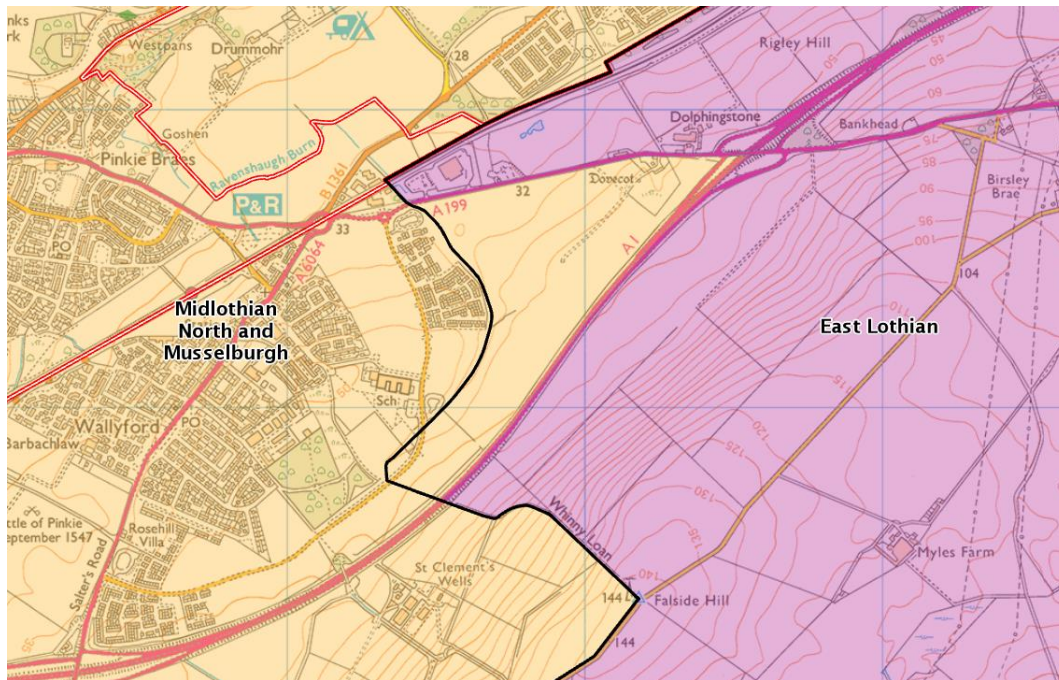
- it focuses on the north of Edinburgh and makes no further changes to the provisional proposals; and
- seeks to maintain community ties in a deprived part of Edinburgh (Rule 4).

54. The disadvantages of this selection are it splits four further wards and may break local ties in the affected constituencies (Rule 4).
55. Ben Macpherson, MSP for Edinburgh Northern and Leith, responded regarding the community of Muirhouse. He noted that Muirhouse used to be part of an Edinburgh North and Leith UK Parliament constituency and it is currently part of Edinburgh Western Scottish Parliament constituency. The proposals would mean Muirhouse being placed in an Edinburgh Forth and Linlithgow constituency. He stated the communities of Muirhouse identify as being part of north Edinburgh. He suggested the current boundary of Pennywell Road is a false dividing boundary as he and the neighbouring MSP often refer constituents to each other as they are confused as to who represents them. He stated that as Muirhouse is one of the most deprived communities in Scotland that being on the periphery of such a geographically large constituency of Edinburgh Forth and Linlithgow may be detrimental to the Muirhouse community.
56. The boundary suggested by Mr McPherson is similar to the suggestion from the Community Renewal Trust shown above.
57. North Edinburgh Arts stated the proposed Forth and Linlithgow constituency will split the population of the west of Edinburgh from the City of Edinburgh. They are concerned that the demographics of those in the Forth Ward are distinctly different from the rest of the constituency and their voices could be subsumed within the wider constituency.
58. Ash Regan MSP for Edinburgh Eastern stated that her Portobello and Joppa constituents belong to Edinburgh and not with Midlothian or East Lothian. They opposed a constituency covering three different local authorities and stated Portobello should remain within an Edinburgh constituency.
59. City of Edinburgh Council did not respond to the consultation as they did not have an agreed position on the proposals.
60. There were 12 comments generally opposing the proposals for Edinburgh constituencies.
61. Several responses made a suggestion or comment that were out-with the rules or legislation for this review including comments relating to boundary changes impacting council services.

East Lothian Consultation Responses and Analysis

62. There were 70 responses from members of the public regarding the provisional proposals for East Lothian Council area, with most comments relating to Prestonpans.
63. More than 50 responses specifically opposed placing Prestonpans in the proposed Midlothian North and Musselburgh constituency because: it broke local ties between Prestonpans and neighbouring villages; difficult to represent a constituency containing parts of three council areas; and numerous responses suggesting Prestonpans was effectively being removed from East Lothian.
64. The East Lothian SNP Councillors' group opposed placing Prestonpans in a constituency with Musselburgh and parts of Edinburgh and Midlothian Council areas. They believe the proposals will break local ties and cause difficulties with councillors from three different councils having to liaise with a single MSP on constituency matters. They are similarly concerned the town of Musselburgh will have difficulties dealing with three different layers of representation.
65. Prestonpans Labour Club objected to placing Prestonpans in a Midlothian North and Musselburgh constituency. They believe splitting two wards in East Lothian will ignore long established links between Prestonpans and neighbouring communities particularly Cockenzie, Port Seton and Longniddry. They also stated the relatively small size of Prestonpans in comparison to other settlements may lead to a loss of a voice in local issues. They also cited concerns regarding representation of the local high school, similar issues regarding the site of the former Cockenzie Power Station and went on to request a local inquiry.
66. East Lothian SNP Constituency Association objected to ward 2 (Preston, Seton and Gosford) being split between constituencies and expressed concerns regarding representation as Prestonpans will be part of the only constituency which straddles three council areas. They stated the proposals may lead to voter confusion as a single council ward could be represented by 16 MSPs if the ward is split between two Scottish Parliament constituencies and regions. They suggested retaining Prestonpans in a constituency with the rest of East Lothian except Musselburgh would still be workable in terms of numbers and would not be the largest in comparison to other constituencies in the provisional proposals.
67. The SNP Preston, Seton, Gosford Fa'side Branch objected to the provisional proposals in similar terms to the East Lothian SNP Constituency Association but focused more on the breaking of local ties near Prestonpans.

68. East Lothian Constituency Labour Party strongly opposed placing Prestonpans in a constituency separate to the remainder of the ward as it would break longstanding community links between Prestonpans, Cockenzie and Port Seton.
69. Since 1950, for both Scottish Parliament and UK Parliament constituencies, Prestonpans has been part of a constituency with the areas to its east.
70. If Prestonpans were to be added to the East Lothian constituency, the proposed Midlothian North and Musselburgh constituency would have -21.6% variation from the electoral quota and East Lothian +12.7%.
71. Four responses opposed Musselburgh being placed in a constituency out-with East Lothian.
72. Musselburgh has been in a constituency out-with the rest of East Lothian on several occasions. From 1997-2005, it was in a separate constituency for the UK Parliament and will once again be following the 2023 Review. Musselburgh has been in a separate constituency from the majority of East Lothian for the Scottish Parliament since 1999.
73. Two responses suggested the Commission reconsider the proposed boundary by Wallyford due to expanding housebuilding in the area.
74. The suggestion would ensure that new housing east of Wallyford, between the A199 and the A1, would not be split between constituencies. This area is shown below. When this review commenced there were no electors in the area in question and as such to accommodate this change would only affect a handful of electors in the longstanding houses to the east of the area highlighted in the map. The review rules do not compel the Commission to consider forecast electorates in their deliberations and constituency designs.



75. The remaining comments were general opposition to the proposals for East Lothian including preferences for East Lothian to be a single constituency.
76. East Lothian has an electorate of 88,539. An East Lothian constituency would result in a constituency with 48% variation from the electorate quota.
77. East Lothian Council opposed the proposals and asked for a local inquiry in respect of both the proposed Midlothian North and Musselburgh and East Lothian constituencies. The Council stated that ideally the council area would be coterminous with an East Lothian constituency and acknowledged that electoral parity was a factor in constituency design but also suggested that any changes to Scottish Parliamentary boundaries should not be driven entirely by numbers and that the other statutory considerations should carry some weight. They also suggested the proposed change to the East Lothian boundary in the west of the council area breaks strong community ties, splits a cohesive community between two constituencies, and disregards the geographic, transport, business and community links present in the area.

Midlothian Consultation Responses and Analysis

78. There were four responses from members of the public regarding the provisional proposals for Midlothian Council area.
79. A member of the public suggested a Midlothian constituency and placing Musselburgh in an East Lothian constituency.

80. Midlothian has 76,131 electors and would have variation from the electorate quota of 27%.
81. A member of the public suggested that Penicuik looks southwards rather than northwards.
82. Penicuik has been in a Scottish Parliament constituency with parts of the Scottish Borders Council area since 1999. Penicuik has been in a UK Parliament constituency coterminous with the Midlothian Council area boundary since 2005 and will continue to beyond 2024. For the existing arrangements to be retained the Commission would need to consider an alternative grouping of council areas.
83. A member of the public wished Dalkeith to remain part of a Midlothian South constituency to avoid breaking longstanding local ties.
84. Dalkeith is currently in a Midlothian North and Musselburgh constituency along with other Midlothian wards. The provisional proposals placed Dalkeith in a Midlothian North and Musselburgh constituency.
85. A member of the public opposed the proposed Midlothian North and Musselburgh constituency on the grounds that it is the only consistency to contain parts of three council areas. They offered no alternative suggestion.
86. No existing Scottish Parliament constituencies cover parts of three council areas. The existing UK Parliament Dumfriesshire, Clydesdale and Tweeddale constituency covers parts of three council areas.
87. A Midlothian Councillor opposed removing Dalkeith from a Midlothian South constituency and joining it on to Midlothian North and Musselburgh. They suggested as Dalkeith is the county town of Midlothian it should be situated in a Midlothian constituency.
88. Dalkeith is currently in Midlothian North and Musselburgh Scottish Parliament constituency along with parts of East Lothian and most of Midlothian Council area.
89. Midlothian Federation of Community Councils raised concerns with Midlothian ward 3 (Dalkeith) being split from the rest of Midlothian Council area. They cited Dalkeith being the site of the civic headquarters, home to the existing MSP's constituency office and all transport links from Edinburgh to the Borders pass through Dalkeith as factors supporting Dalkeith sitting within a Midlothian

constituency. They acknowledged that Midlothian is split at present and suggested that the split reflects a time when Penicuik and Peebles were more closely related than they are currently.

90. Dalkeith and District Community Council responded in similar terms to the Midlothian Federation of Community Councils and stated that neither of the proposed names for constituencies containing part of Midlothian council area were appropriate.

91. Colin Beattie MSP for Midlothian North and Musselburgh objected to the proposals because:

- of administrative difficulties in representing a constituency spanning three council areas;
- the constituency ceases to be a rural constituency and becomes an urban one. This will upset residents and community groups who pride themselves on living in a rural constituency;
- it may break ties between areas such as Mayfield and Easthouses which look to Dalkeith rather than southwards;
- Portobello will be the lone urban city area in an otherwise rural constituency;
- Midlothian North and Musselburgh are separate entities at a sub-constituency level and anticipated that Portobello would be too;
- difficulties for councillors in representing wards that form the constituency;
- Councils will have to deal with new political connections which will increase the administrative burden; and
- transport links between Portobello and Dalkeith or Danderhall and Prestonpans are complex to navigate and would be the same across many areas of the proposed constituency.

92. Midlothian Council suggested alternative names for the proposed constituencies. They suggested that as the proposed Midlothian North constituency only contains ward 3 (Dalkeith) it would be appropriate to drop Midlothian from the name to better recognise the parts of City of Edinburgh and East Lothian Council areas that are in the constituency. They also suggested that as Midlothian South consists solely of Midlothian wards except for ward 3, it should be renamed "Midlothian".

West Lothian Consultation Responses and Analysis

93. There were four responses from members of the public regarding the provisional proposals for West Lothian Council area.

94. One response opposed the proposed boundaries in West Lothian particularly the Edinburgh Forth and Linlithgow constituency. They acknowledged the logic in having similar numbers of voters in each constituency but noted that the boundaries in their area do not reflect the common interactions across the area. They pointed out that Dechmont and Uphall look towards Livingston rather than Linlithgow or Pilton. Similarly, Blackness and Linlithgow – which are historically and practically linked are in different constituencies. They did not offer an alternative suggestion.
95. One response opposed the proposals to place part of West Lothian in a constituency with Edinburgh. They did not offer any reasons.
96. One response supported the proposed Linlithgow constituency on the grounds that it would allow the town to be given proper representation from its elected MSP.
97. Councillor Stuart Borrowman (Armadale and Blackridge ward) supported the proposed Bathgate and Almond Valley constituency but suggested “Bathgate” would be a more appropriate name as it is the de facto county town for this area.
98. Linlithgow SNP Constituency Association responded with an alternative suggestion which makes changes to six of the proposed constituencies. Their suggestion aims to recognise issues of geography, community connections and local ties, rather than just electorate. It would add Ratho and Newbridge from the proposed Edinburgh Pentlands constituency to a West Lothian and Forth constituency. Torphichen and Blackridge from the proposed Bathgate and Almond Valley constituency would also be added. To accommodate these changes Muirhouse in Edinburgh Forth and Linlithgow would be added to Edinburgh North and Leith and parts of Davidsons Mains added to Edinburgh Western. Further changes to Edinburgh Southern are also suggested to ensure Edinburgh Pentlands has sufficient electors. This suggestion has been mapped at Appendix C and the electorate is shown in the table below.

Constituency Name	Electorate	Variation from Electoral Quota	Wards
West Lothian and Almond Valley	58,120	-3.0%	West Lothian 6,7,8,9(part)

West Lothian and Forth	53,899	-10.0%	West Lothian 1,2,9(part) Edinburgh 1(part),2(part)
Edinburgh Northern and Leith	64,045	6.9%	Edinburgh 1(part),4,12,13
Edinburgh Pentlands	58,647	-2.1%	Edinburgh 2,3(part),7(part),8(part),9(part)
Edinburgh Southern	54,201	-9.5%	Edinburgh 7(part),8(part),9(part),10
Edinburgh Western	66,935	11.7%	Edinburgh 1(part),3,5,6
Livingston	56,009	-6.5%	West Lothian 3,4,5

99. The advantages of this suggestion are it may retain local ties in Muirhouse (Rule 4).

100. The disadvantages of this selection are it:

- creates one constituency with variation from the electoral quota more than $\pm 10\%$ (Rule 2);
- splits more wards than the provisional proposals, ward 1 (Almond) is split between three constituencies and may break local ties (Rule 4); and
- further divides City of Edinburgh ward 8 (Colinton/Fairmilehead) (Rule 4).

101. SNP Almond Valley Constituency Association made no objections to the proposals as they maintain geographical integrity and local social connections in West Lothian.

102. West Lothian Council acknowledged the consultation period but did not submit an official response.

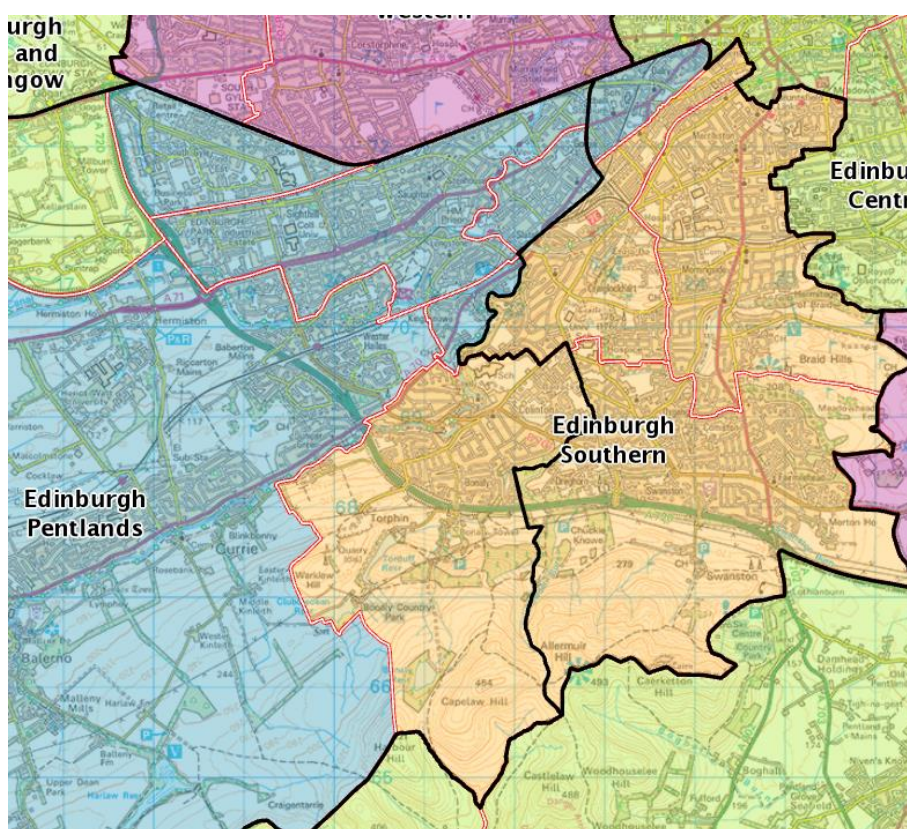
All Scotland Consultation Responses from National Political Parties that apply to this grouping and Analysis

103. The Scottish Liberal Democrats stated constituencies containing a single council area are preferable, but they accept that in this grouping that is not possible. They went on to suggest several small changes to the provisional proposals for the Edinburgh Forth and Linlithgow, Edinburgh Pentlands and Edinburgh Southern constituencies. They suggested the whole of Edinburgh's ward 1 (Almond) should be in the proposed Edinburgh Forth and Linlithgow constituency.

104. They also suggested that the whole of Edinburgh's ward 7 (Sighthill/Gorgie) should be in the Edinburgh Pentlands constituency, moving electors from the proposed Edinburgh Southern constituency. Furthermore, the whole of ward 8 (Colinton/Fairmilehead) should be in Edinburgh Southern. They suggested these

changes would protect Livingston so it remains entirely in one constituency; create constituencies more closely aligned to the electoral quota. They state their suggestion will have only four constituencies with variance from the electorate quota greater than 5.5% (six under Boundaries Scotland’s provisional proposals); split only six wards across 12 constituencies (nine under Boundaries Scotland’s provisional proposals); and minimise the splitting of council wards will help voters understand which constituency they live in.

105. A map and table of the Scottish Liberal Democrats suggestion are shown below.



Constituency Name	Electorate	Variation from Electoral Quota	Wards
Edinburgh Forth and Linlithgow	56,798	-5.2%	Edinburgh 1 West Lothian 1,2
Edinburgh Pentlands	57,856	-3.4%	Edinburgh 2, 3(part),7, 9(part)
Edinburgh Southern	57,134	-4.6%	Edinburgh 8,9(part),10

106. The advantages of the Scottish Liberal Democrats suggestion are:

- it splits fewer wards than the provisional proposals (Rule 1 and 4); and

- improves variation from electoral quota (Rule 2).

107. The disadvantages are it creates an Edinburgh Pentlands constituency very similar to one previously considered by the Commission which was not preferred as the design created a constituency which seemed inconsistent with Rule 3.

108. The Scottish Conservative and Unionist Party were generally content with the proposals but commented on the proposed Edinburgh Forth and Linlithgow, Edinburgh Pentlands and Edinburgh Southern constituencies. They suggested arrangements where wards 1, 8 and 9 are not split between constituencies, as they are in the provisional proposals, by placing the Ratho Station and Newbridge parts of ward 1 (Almond) in the proposed Edinburgh Forth and Linlithgow constituency. They stated this is justified as these areas are close to Broxburn and have good transport links with each other. They also suggested moving the boundary between Edinburgh Pentlands and Edinburgh Southern in the Gorgie/Dalry ward further west to ensure a greater part of the Gorgie/Dalry ward is contained within a single constituency and placed more towards the centre of the city although still in an Edinburgh Southern constituency. This suggestion would allow the entirety of the Colinton/Fairmilehead ward to be contained within an Edinburgh Pentlands constituency rather than being split as was the case with the provisional proposals. They suggested this would be popular as the Colinton/Fairmilehead ward has previously been contained within a single constituency.

109. A map of the Scottish Conservative and Unionist Party suggestion is at Appendix D and the electorate in the table below.

Constituency Name	Electorate	Variation from Electoral Quota	Wards
Edinburgh Forth and Linlithgow	56,798	-5.2%	City of Edinburgh 1 West Lothian 1,2
Edinburgh Pentlands	55,574	-7.2%	City of Edinburgh 2, 3(part),7(part),8
Edinburgh Southern	59,416	-0.8%	City of Edinburgh 7(part),9,10

110. The advantage of this suggestion is that it splits fewer wards than the provisional proposals (Rule 4).

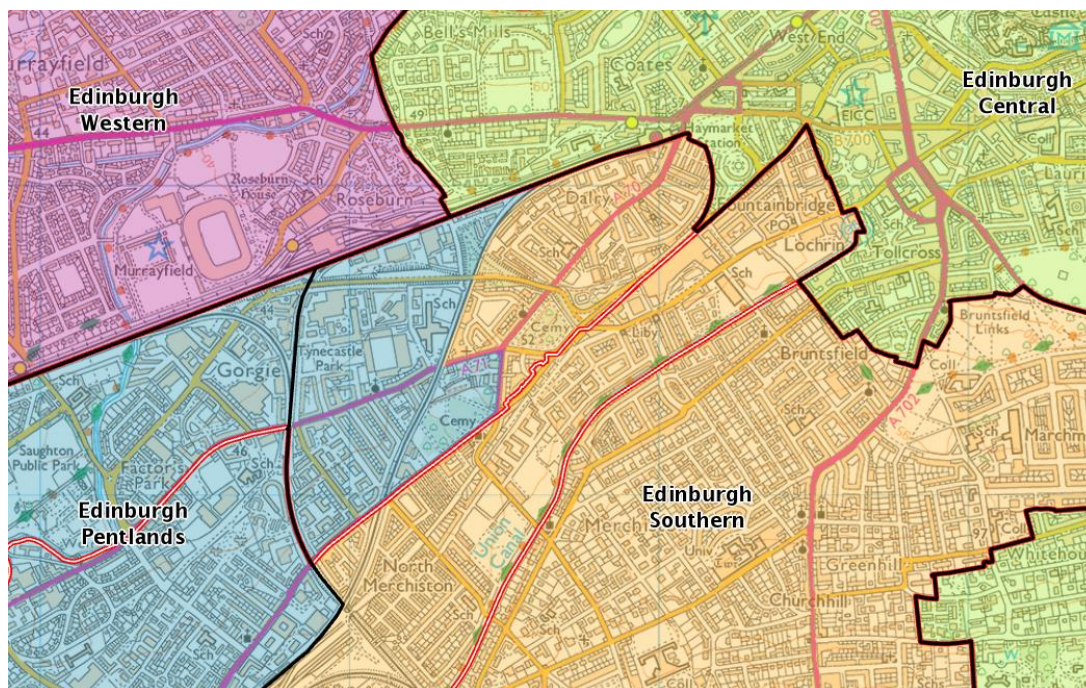
111. The disadvantage of this suggestion is that it retains a constituency similar to the proposed Edinburgh Forth and Linlithgow constituency which received strong opposition (Rule 1 and 4).
112. The Scottish Conservative and Unionist Party made no comment on the proposals for Midlothian or East Lothian Council areas.
113. The Scottish Labour Party acknowledged this grouping's electorate growth in recent years and expressed concerns that the transfer of Prestonpans could cause significant disruption to the long-established community links between Prestonpans and its neighbouring communities. They believe there should be a local inquiry and the opportunity for further engagement with local community organisations.
114. They raised concerns about the proposals within Edinburgh and in particular the wholesale redrawing of constituencies in the south of the city. They believed that the proposed Edinburgh Southern constituency bears no resemblance to the current constituency and means there is now no relationship between the UK Parliament Edinburgh South constituency and the Scottish Parliament Edinburgh Southern constituency. They stated the Southside/Newington ward forms the heart of the historic south Edinburgh constituencies and that its removal will cause confusion and inconvenience for electors, leaving the area divided between two constituencies gravitating to the south east and south west and lacking much coherence. They also pointed to the community of Chesser which would be moved into its third different constituency, to the removal of Dalry from Edinburgh Central and of Oxfords and Swanston which would be removed from the Edinburgh Pentlands constituency, all of which they believe would break local ties. They recognised that any counter proposal which sought to restore these ties would create some disruption elsewhere, but they believe it may be more appropriate to concentrate change in the east and north of the city where electoral arrangements have already been less settled. They therefore decided to consider other proposals and make further representations during the next consultation period.

All Scotland Consultation Responses that apply to this grouping and Analysis

115. There were six responses that commented on more than a single grouping of council areas or all of Scotland out-with those submitted by political parties. Three of these referred to this grouping.
116. A member of the public suggested an alternative boundary between the proposed Edinburgh Pentlands and Edinburgh Southern constituencies. They

stated that the proposed boundary will split the area of Gorgie. They suggested realigning the boundary so that Gorgie is in a single constituency to better reflect local ties without unduly affecting the electorate of either constituency.

117. A map and table of this suggestion is shown below.



Constituency Name	Electorate	Variation from electoral quota	Wards
Edinburgh Pentlands	59,680	-0.4%	Edinburgh 1(part), 2, 3(part), 7(part), 8(part), 9(part)
Edinburgh Southern	56,242	-6.1%	Edinburgh 7(part), 8(part), 9(part), 10

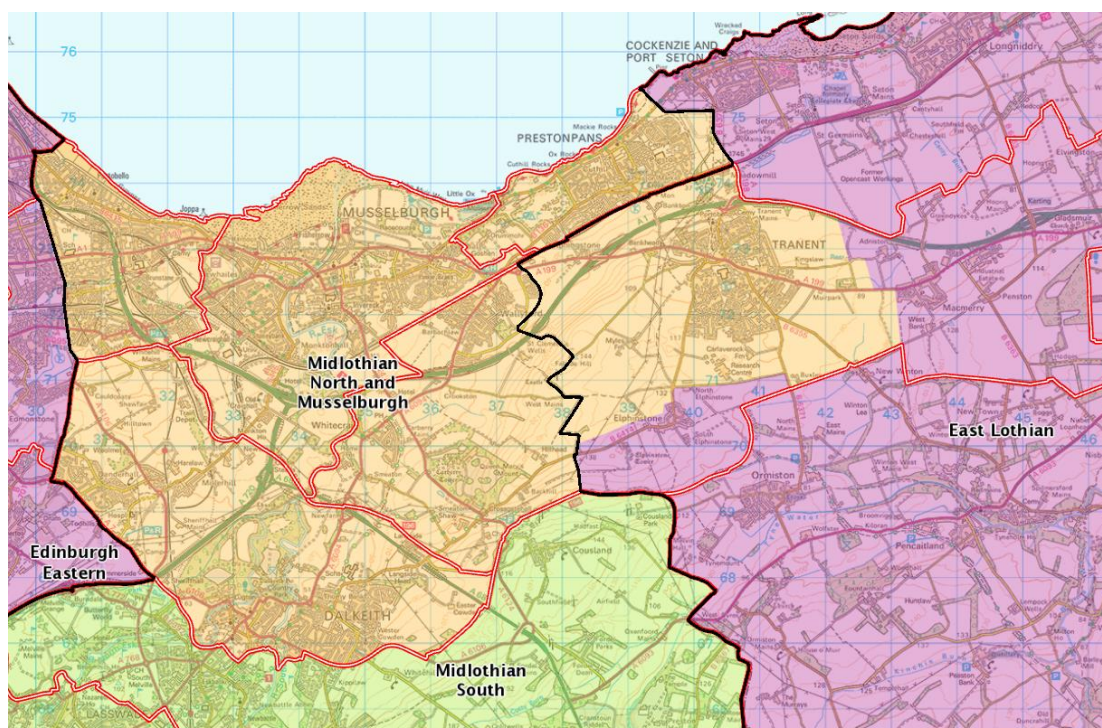
118. The advantage of this suggestion is that it presents a recognisable boundary between Gorgie and Dalry by following main roads and a railway line (Rule 4).

119. The disadvantages of this suggestion are it does not consider the Gorgie/Dalry community council area boundary and therefore may break local ties between Edinburgh neighbourhoods (Rule 4)

120. A member of the public supported the proposed East Lothian constituency as it does not contain parts of other council areas. They suggested that as East Lothian has one of the fastest growing populations in Scotland, they would

remove part of the Tranent, Wallyford and Macmerry ward that is in the proposed East Lothian constituency and add it to the proposed Midlothian North and Musselburgh constituency as this will consider population growth over the next 15 – 20 years. They suggested adding Tranent to the Midlothian North and Musselburgh constituency, whilst retaining Macmerry and Elphinstone within an East Lothian constituency will ensure both constituencies are within the review’s limits and do not contain too many or few electors.

121. A map of this suggestion and electorate are shown in the table below.



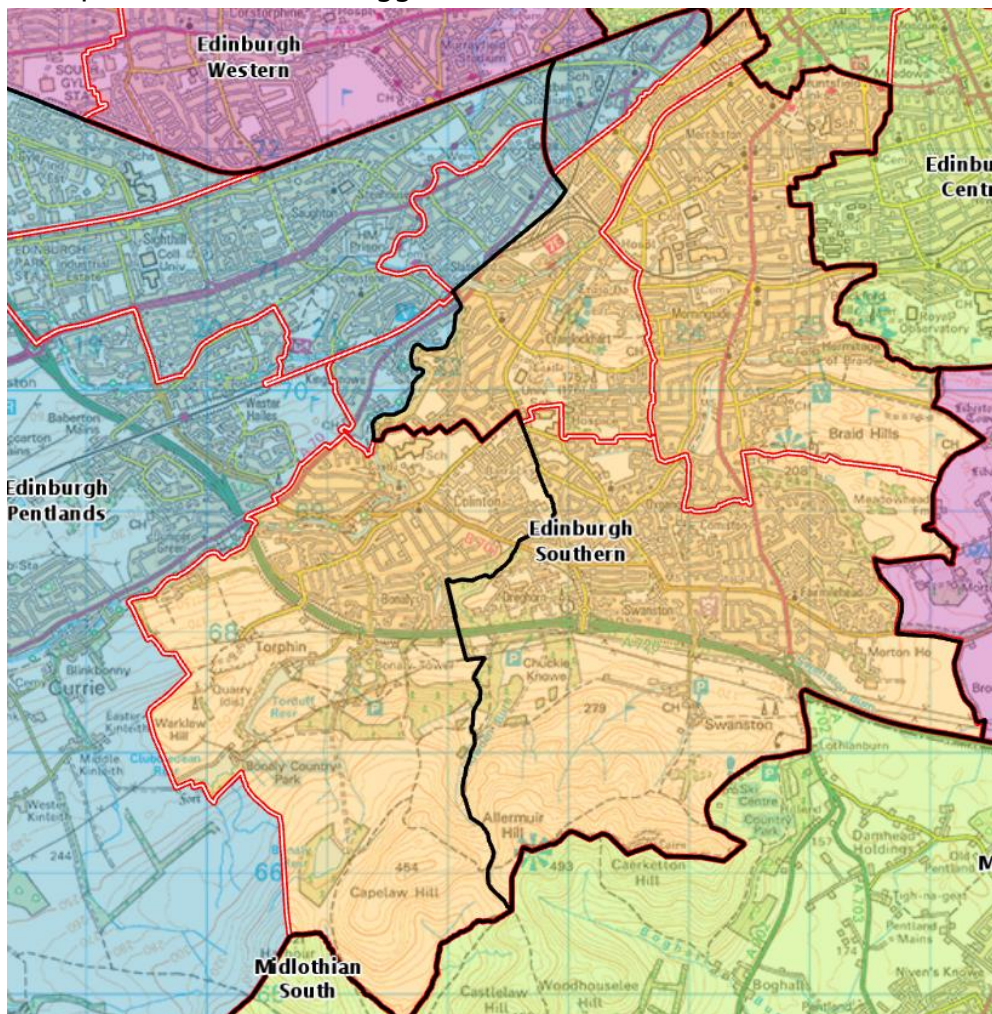
Constituency Name	Electorate	Variation from electoral quota	Wards
East Lothian	49,827	-16.8%	East Lothian 2(part), 3(part), 4-6
Midlothian North and Musselburgh	64,680	8.0%	City of Edinburgh 17(part) East Lothian 1,2(part),3(part) Midlothian 3
Midlothian South	64,424	7.5%	Midlothian 1,2,4-6

122. The advantage of this suggestion is Musselburgh is placed in a constituency with its two largest neighbouring towns, Tranent and Prestonpans which will maintain local ties (Rule 4).

123. The disadvantages of this selection are variation from the electoral quota in the proposed East Lothian constituency is -16.8% (Rule 2). Whilst the respondent is aware of this, they believe their suggestion considers population growth.

124. A member of the public made an alternative suggestion regarding the proposed Edinburgh Pentlands and Edinburgh Southern constituencies which they hoped would align with community links, increase the number the number of wards remaining intact and would be consistent with historical parliamentary constituencies. The suggestion would keep the Colinton/Fairmilehead ward whole and wholly within the Edinburgh Southern constituency and similarly keep the Sighthill/Gorgie ward whole in the Edinburgh Pentlands constituency.

125. A map and table of the suggestion are below.



Constituency Name	Electorate	Variation from the	Edinburgh Wards
-------------------	------------	--------------------	-----------------

		electoral quota	
Edinburgh Pentlands	58,788	-1.9%	1(part), 2, 3(part), 7, 9(part)
Edinburgh Southern	57,134	-4.6%	8, 9(part), 10

126. The advantages of this suggestion are it splits fewer wards than the provisional proposals (Rule 4).
127. The disadvantages are it creates an Edinburgh Pentlands constituency very similar to one previously considered by the Commission which was not preferred as the design created a constituency which seemed inconsistent with Rule 3.
128. There were approximately 10 general responses to the consultation opposing the Second Review or making comments out-with the legislation for the review.

Names

129. One response suggested adopting neighbourhood names instead of compass points because this would avoid issues of areas being in a south or central constituency when they do not associate with those areas. Conversely the names are unlikely to be an exhaustive list of all neighbourhoods in a constituency and may make others feel disenfranchised. They also suggested renaming the proposed Bathgate and Almond Valley constituency because it could cause confusion as Almond Valley is not used locally to describe the area. They suggested either 'Bathgate and Whitburn', 'Bathgate and Breich Valley' (to match a council ward name) or simply 'Bathgate'.
130. Linlithgow SNP Constituency Association also suggested alternative names for the proposed Edinburgh Forth and Linlithgow and Bathgate and Almond Valley constituencies.
131. Midlothian Council suggested alternative names for both proposed constituencies containing parts of Midlothian Council area. They proposed "Midlothian" for the proposed Midlothian South constituency and suggested any alternative to the proposed "Midlothian North and Musselburgh" that better reflected the communities in the constituency.
132. The alternative names suggested are shown below:

Constituency Name – Provisional Proposals	Alternative name suggested
Bathgate and Almond Valley	West Lothian and Almond Valley Bathgate
East Lothian	–
Edinburgh Central	Edinburgh Central and Southside
Edinburgh Forth and Linlithgow	West Lothian and Forth
Edinburgh Northern and Leith	Edinburgh Leith and Granton
Edinburgh Pentlands	–
Edinburgh Southern	Edinburgh Morningside and Craiglockhart
Edinburgh Western	Edinburgh Corstorphine and Inverleith
Edinburgh Eastern	Edinburgh Craightinny and Gilmerton
Livingston	–
Midlothian North and Musselburgh	–
Midlothian South	Midlothian

Summary

133. This grouping includes many of the areas in Scotland that have seen the highest population growth over the past 10 – 20 years. Of the 11 existing constituencies in this grouping, five are above 15% variation from the electoral quota and three are over 20%.
134. The provisional proposals addressed variation from the electoral quota and proposed 12 new constituencies.
135. The Commission proposed one constituency that crossed the West Lothian and City of Edinburgh Council area boundary and one constituency that contained part of City of Edinburgh, Midlothian and East Lothian Council areas. Both constituencies received strong opposition. There was also opposition to the proposals in Edinburgh Central and Edinburgh Southern constituency.
136. There has never been a Scottish Parliament constituency containing parts of three council areas. However, the UK Parliament constituency of Dumfriesshire, Clydesdale and Tweeddale contains part of South Lanarkshire, Scottish Borders and Dumfries and Galloway Council areas and has been in existence since 2005.
137. There has never been a constituency that contained both parts of Edinburgh and Linlithgow.

East Lothian

138. East Lothian Council opposed the proposals and called for a Local Inquiry in respect of the proposed Midlothian North and Musselburgh and East Lothian constituencies.
139. In East Lothian responses stated placing Prestonpans in a constituency with Musselburgh and Portobello would break local ties between Prestonpans and neighbouring settlements in East Lothian.
140. Prestonpans has historically been in a constituency with parts of East Lothian to its east, but the acknowledged electorate growth in the East Lothian Council area means that the council area cannot be retained within a single constituency while continuing to have regard to Rule 2.
141. An East Lothian constituency less only Musselburgh would still have 71,728 electors and variation from the electorate quota of 29%.

Edinburgh

142. In Edinburgh there was strong opposition to an Edinburgh Forth and Linlithgow constituency because of a lack of ties between Linlithgow and Pilton, Muirhouse or anywhere in the north-west of Edinburgh.
143. When considering its provisional proposals the Commission considered an option with a different Edinburgh-West Lothian constituency design that placed Juniper Green and Balerno in a constituency with the south and east of Livingston. At that time the Commission were not convinced that the boundaries in Edinburgh were sufficiently recognisable to merit further consideration.
144. Some responses wished electoral boundaries to align but the number of constituencies differs between the UK and Scottish Parliaments.
145. There were several alternative suggestions submitted for this grouping although none considered the whole area. Most suggestions related to areas to the south and west of City of Edinburgh Council area. Several suggestions sought to reduce the number of split wards in the proposed Edinburgh Central and Edinburgh Southern constituencies with a view to retaining local ties in Gorgie/Dalry and Colinton/Fairmilehead.
146. Other suggestions regarding the boundary in central Edinburgh in Gorgie and Dalry, suggested boundaries which the Commission had previously considered

prior to agreeing its provisional proposals, but had disregarded as they presented boundaries that created unusually shaped constituencies.

147. There were also several responses which wished to retain the existing arrangements particularly in the centre and south of Edinburgh. Four of the existing Edinburgh constituencies (Central, Pentlands, Southern and Western) are within 10% of the electorate quota however the other three constituencies have wide variations from the electorate quota so some changes to the existing boundaries are to be expected.

148. The Commission could consider some of the alternative suggestions with minimal impact to variation from the electoral quota and neighbouring constituencies such as at Abbeyhill. Some of the suggestions considered their locality but not the wider area or variation from the electorate quota, such as Muirhouse and the south of Edinburgh.

149. City of Edinburgh Council did not submit an official response.

Midlothian

150. Most of the responses in Midlothian opposed a Midlothian North and Musselburgh constituency covering three council areas.

151. Midlothian Council opposed the proposals and suggested alternative constituency names.

West Lothian

152. The responses cited the broad geographical spread and the lack of community ties in the proposed Edinburgh Forth and Linlithgow constituency.

153. West Lothian Council did not submit an official response.

154. The Commission will be holding a local inquiry in East Lothian in respect of the proposed Midlothian North and Musselburgh and East Lothian constituencies so further suggestions may arise.

155. The Commission could propose a new grouping of council areas to resolve some of the issues raised from the consultation. This is discussed in Paper 73 Consideration of responses to consultation on provisional proposals for constituency boundaries – Alternative constituency design groupings. A grouping of City of Edinburgh and East Lothian Council areas has an entitlement of 8.2 constituencies and would avoid an Edinburgh–West Lothian constituency

and a three council area constituency. A grouping of Midlothian and Scottish Borders Council areas has an entitlement of 2.9 constituencies and would avoid a three council area constituency. A grouping of Falkirk, North Lanarkshire, South Lanarkshire and West Lothian Council areas has an entitlement of 13.2 constituencies and would avoid an Edinburgh–West Lothian constituency.

156. As stated above the constituency names in this paper are provisional. The Commission will have the opportunity to review all constituency names and designations prior to the publication of its revised proposals.

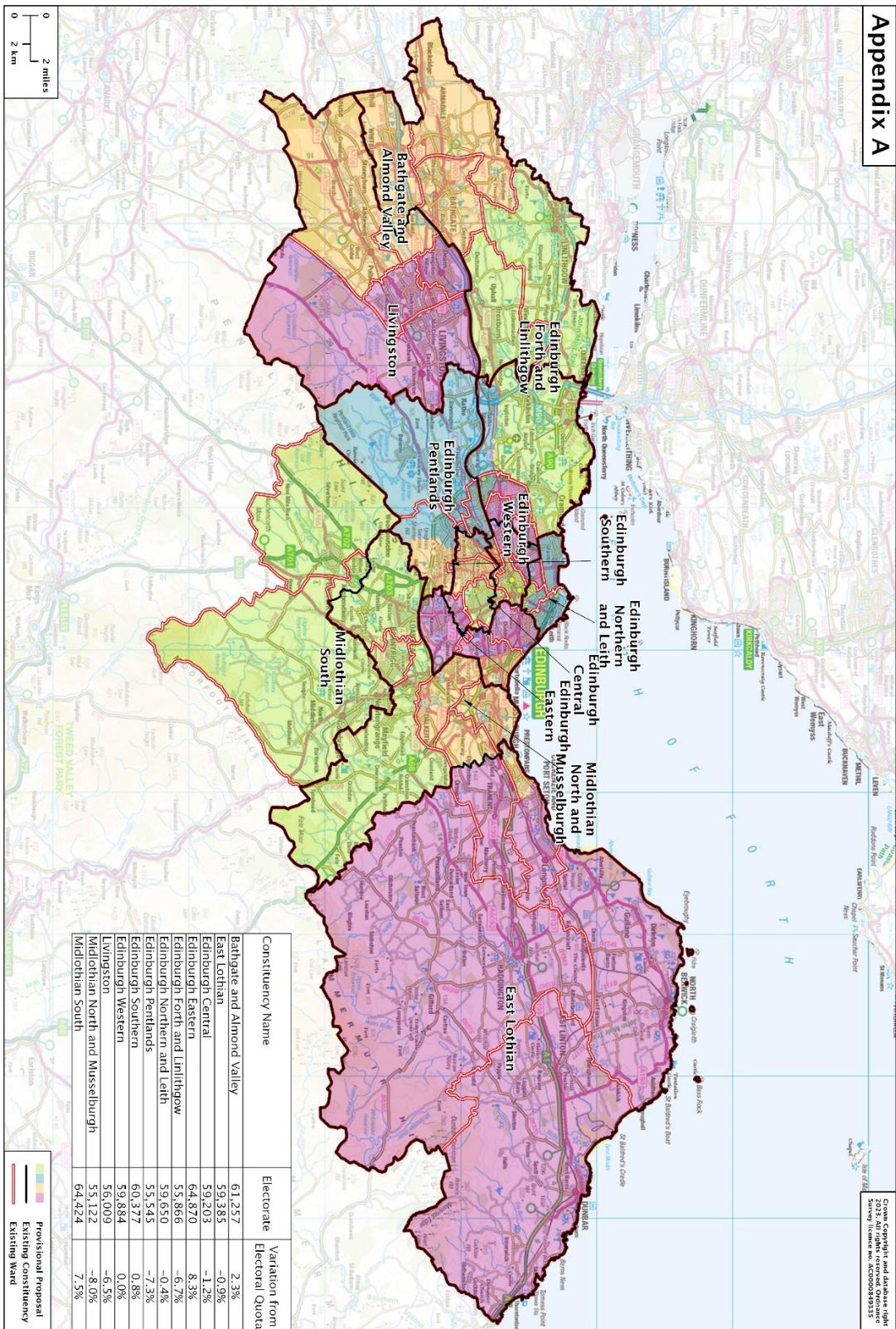
Recommendations

157. Taking into account all of the evidence arising from the public consultation on the provisional proposals, the Commission must hold a local inquiry in respect of Midlothian North and Musselburgh and East Lothian constituencies because East Lothian Council objected to the proposals.

158. The Commission is invited to offer any initial thoughts on the issues in this paper. As a local inquiry is required no decision on possible Revised Proposals can be made at this time. Paper 74 considers handling of local inquiries for this review.

Secretariat
October 2023

Provisional Proposals – for City of Edinburgh, East Lothian, Midlothian and West Lothian Council areas

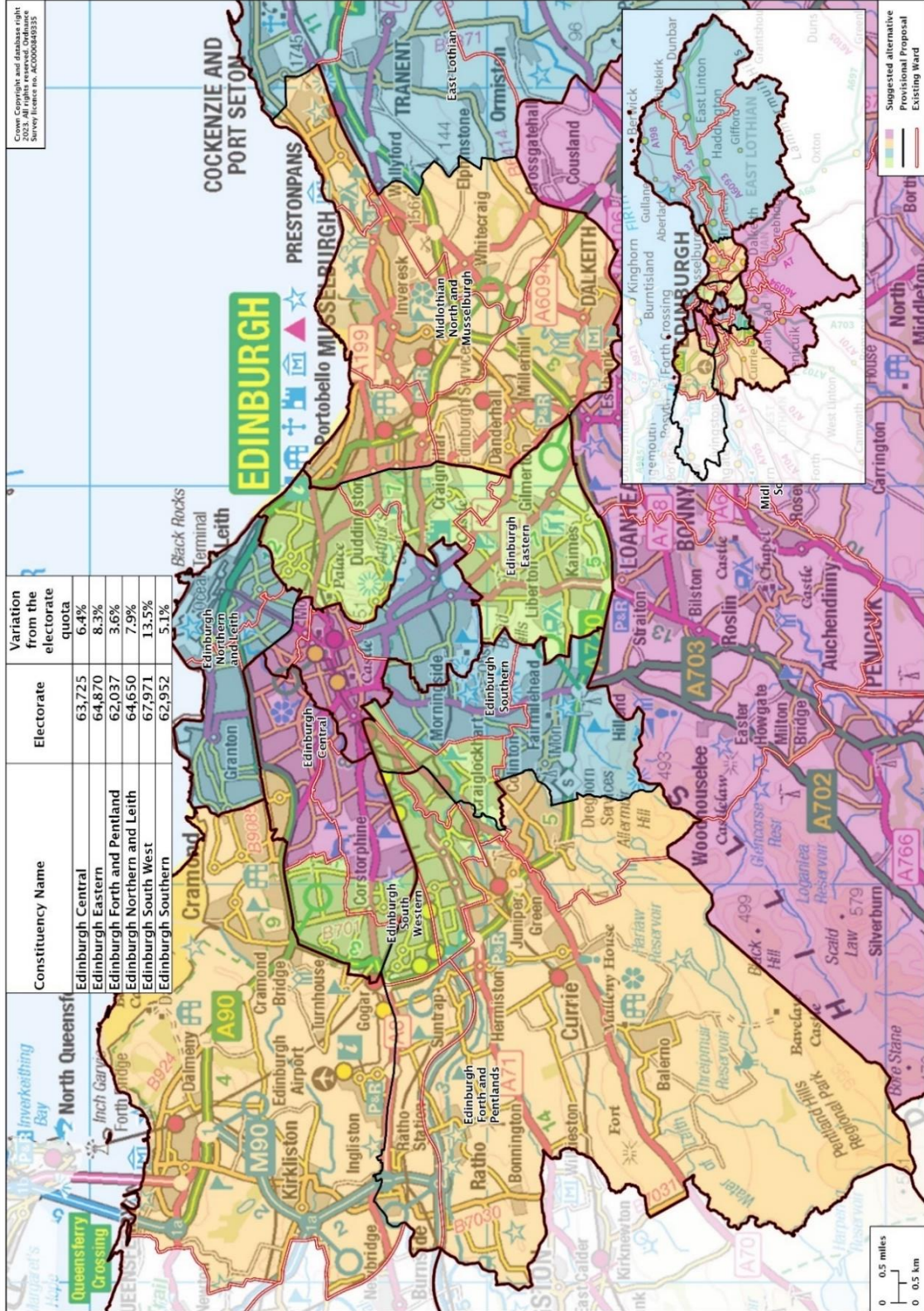


Appendix A

Geomatics and database right
2023. All rights reserved. Ordnance
Survey Licence No. A600049353

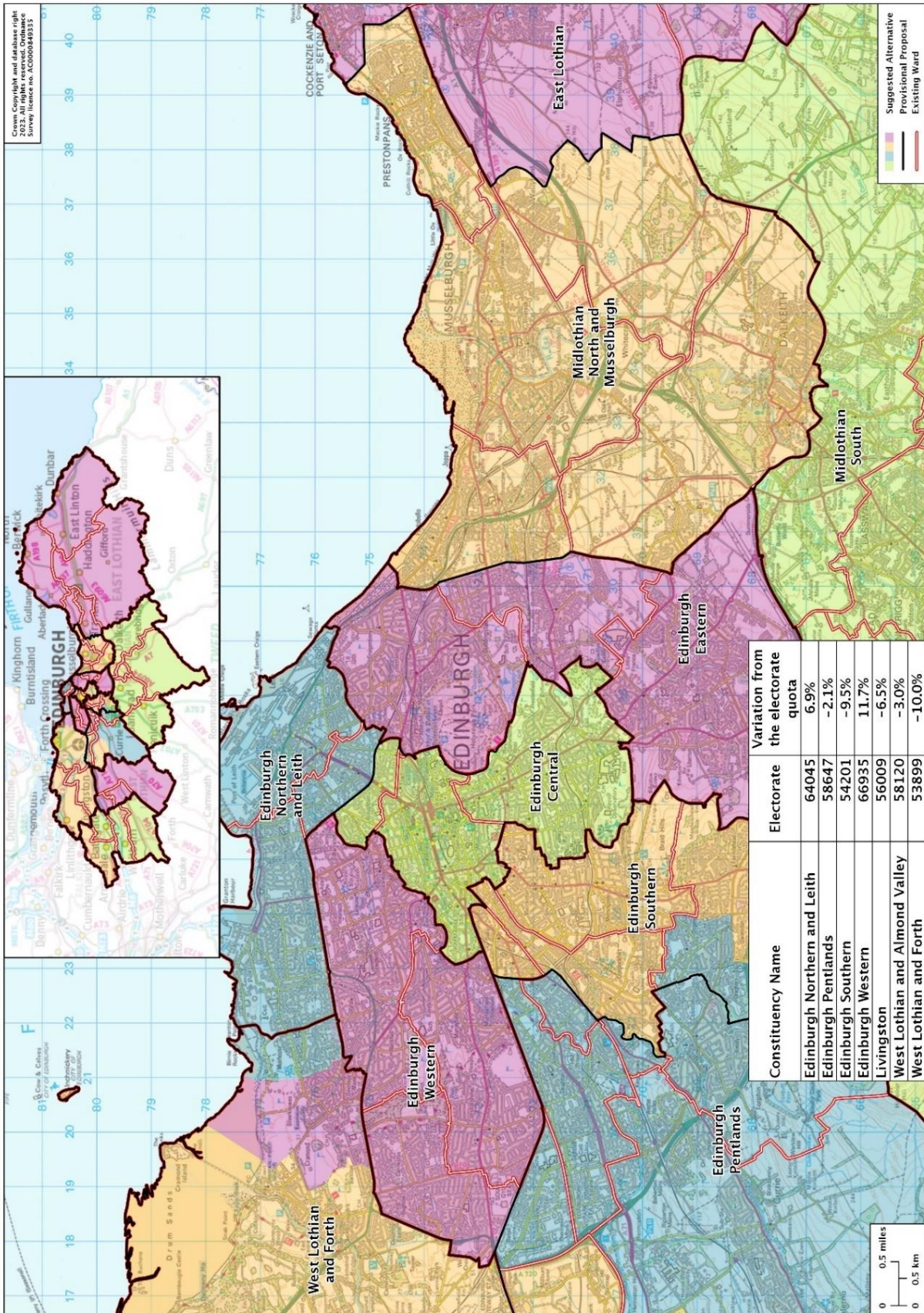
Appendix B

Member of the Public Suggestion – West of Edinburgh (does not include West Lothian) – for City of Edinburgh, East Lothian, Midlothian and West Lothian Council areas



Appendix C

SNP Linlithgow Constituency Association Suggestion - for City of Edinburgh, East Lothian, Midlothian and West Lothian Council areas



Appendix D

Scottish Conservative and Unionist Party Suggestion – for City of Edinburgh, East Lothian, Midlothian and West Lothian Council areas

