

**Second Review of Scottish Parliament Boundaries
Draft Revised Proposals for Constituencies - City of Edinburgh, East Lothian,
Midlothian and West Lothian Council areas**

Action required

1. The Commission is invited to agree its Revised Proposals for constituencies in City of Edinburgh, East Lothian, Midlothian and West Lothian Council areas, in light of the reports from Assistant Commissioner Ross on the Local Inquiries held in that area.

Background

2. The Commission agreed its provisional proposals after consideration of Papers BS35 and BS39 at its meetings of 9 February and 9 March 2023, respectively. The Commission agreed to consult on 12 constituencies within City of Edinburgh, East Lothian, Midlothian and West Lothian Council areas. The provisional proposals amended all of the existing constituency boundaries to improve variation from the electorate quota across the whole area.
3. A table of the provisional proposals is shown in the table below and a map is shown in Appendix A.

Constituency Name	Electorate	Variation from Electoral Quota	Wards
Bathgate and Almond Valley	61,257	2.3%	West Lothian 6,7,8,9
East Lothian	59,385	-0.9%	East Lothian 2(part),3(part),4,5,6
Edinburgh Central	59,203	-1.2%	Edinburgh 11,12(part),15
Edinburgh Eastern	64,870	8.3%	Edinburgh 14,16,17(part)
Edinburgh Forth and Linlithgow	55,866	-6.7%	West Lothian 1,2 Edinburgh 1(part)
Edinburgh Northern and Leith	59,650	-0.4%	Edinburgh 4,12(part),13
Edinburgh Pentlands	55,545	-7.3%	Edinburgh 1(part), 2, 3(part), 7(part), 8(part), 9(part)
Edinburgh Southern	60,377	0.8%	Edinburgh 7(part), 8(part), 9(part), 10
Edinburgh Western	59,884	0.0%	Edinburgh 3(part),5,6
Livingston	56,009	-6.5%	West Lothian 3,4,5
Midlothian North and Musselburgh	55,122	-8.0%	East Lothian 1,2(part),3(part) Midlothian 3 Edinburgh 17 (part)
Midlothian South	64,424	7.5%	Midlothian 1, 2, 4-6

4. The Commission consulted on its provisional proposals between 16 May and 17 June 2023.
5. The Commission considered responses to the consultation for City of Edinburgh, East Lothian, Midlothian and West Lothian Council areas at its meeting of 5 October 2023 (Paper BS71) and that paper is attached as an Annex. The Commission agreed to conduct local inquiries in respect of the proposed Edinburgh Forth and Linlithgow constituency due to a large number of responses

opposing its boundary and in respect of the proposed East Lothian and Midlothian North and Musselburgh constituencies because East Lothian Council had objected to the provisional proposals.

Local Inquiries

6. Sheriff Principal Ross (Lothian and Borders Sheriffdom) acted as Assistant Commissioner at the two local inquiries relating to this grouping at: Musselburgh Racecourse on 7 December 2023; and the Village Hotel in Edinburgh on 9 January 2024. There were representations from East Lothian Council, local councillors, MSPs, political parties, community organisations and members of the public.
7. The Assistant Commissioner has submitted his report for each of the inquiries to the Commission and they appear at Appendices B and C. A full transcript of the Musselburgh local inquiry is available at Appendix D and the Edinburgh transcript is at Appendix E.
8. The issues raised at the local inquiry in Musselburgh were opposition to both the proposed boundary by Prestonpans and a Midlothian North and Musselburgh constituency that included parts of three different council areas. The comments made at the Musselburgh local inquiry were similar to those received during the earlier public consultation. In summary:
 - Colin Beattie, MSP for Midlothian North and Musselburgh constituency, opposed the proposed Midlothian North and Musselburgh constituency as it included parts of three different council areas which would make it difficult to administer. He also stated there was a lack of local ties within the proposed constituency.
 - Councillor Norman Hampshire, (Dunbar and East Linton ward and East Lothian Council Leader), opposed the proposals and wished to retain Prestonpans in an East Lothian constituency. He believed an East Lothian constituency with approximately 67,500 electors was acceptable. East Lothian Council supported Councillor Hampshire's suggestion.
 - Ian Gray, East Lothian constituency Labour Party wished to retain the existing East Lothian constituency and opposed a constituency covering parts of three different council areas.
 - Pennypit Community Development Trust wished to retain Prestonpans in an East Lothian constituency and believed the proposals considered only one of the review rules.
 - The Scottish Conservative and Unionist Party acknowledged the electorate growth in East Lothian and that some change to the existing constituency boundaries should be expected. They suggested a possible solution could be adding Tranent to an Edinburgh East and Musselburgh constituency.
 - Prestonpans Community Council opposed the proposals because they broke local ties at Prestonpans.
 - Councillor Brooke Ritchie (Preston, Seton and Gosford ward) opposed the proposed boundary by Prestonpans as it broke local ties.

9. The Assistant Commissioner's report noted the focus of concerns were the proposed boundary by Prestonpans and the Midlothian North and Musselburgh constituency. The Midlothian North and Musselburgh constituency would cover three council areas and this may present practical difficulties dealing with different councils and communities as well as confusing for constituents to distinguish who represents them. In Prestonpans concerns were raised regarding the proposals breaking local ties by Prestonpans and Cockenzie. Others mentioned future housing development and its effect on the electorate of any new constituencies but that is beyond the remit of the Commission.
10. The Assistant Commissioner made no recommendations because he saw no clear solution to the issues raised.
11. The main issue raised at the Edinburgh local inquiry was the use of Pennywell Road as a constituency boundary, breaking local ties there. There was also support for the Linlithgow SNP Constituency Association and Scottish Liberal Democrats alternative suggestions. In summary:
 - The Community Renewal Trust – an organisation based in Muirhouse - opposed the proposals because the proposed constituency boundary followed Pennywell Road and broke local ties in Muirhouse and Pilton.
 - Councillor Euan Hyslop (Drum Brae and Gyle ward) opposed the proposed Edinburgh Forth and Linlithgow constituency and supported the alternative suggestion from the Linlithgow SNP Constituency Association. He also suggested adopting the River Almond as a constituency boundary because it would better reflect the boundary between Edinburgh and West Lothian.
 - Two members of the Linlithgow SNP Constituency Association explained and supported their alternative suggestion, submitted during the earlier consultation stage.
 - Ben Macpherson, MSP for Edinburgh Northern and Leith constituency, suggested placing Muirhouse in an Edinburgh Northern and Leith constituency because the local communities would have common ties. He also opposed the use of Pennywell Road as a constituency boundary.
 - Fiona Hyslop, MSP for Linlithgow constituency, supported the Linlithgow SNP Constituency Association alternative suggestion and made comment on the proposed constituency names. She suggested West Lothian could be included in constituency name(s).
 - The Scottish Liberal Democrats supported the alternative suggestion they had submitted earlier in the consultation.
 - Councillor Kevin Lang (Almond ward) and Councillor Sally Pattle (Linlithgow ward) also spoke in support of the alternative suggestion from the Scottish Liberal Democrats.
12. The Assistant Commissioners report acknowledged that the Pennywell Road boundary was the most common area of discussion and that communities on

both sides of Pennywell Road had common links. He also noted there was little to connect Muirhouse with Linlithgow.

13. The Assistant Commissioner observed that the River Almond may function as a better boundary between Edinburgh and West Lothian. South Queensferry and Kirkliston may look towards Linlithgow rather than Edinburgh.
14. The Assistant Commissioner did not make any recommendations as there is no clear solution within the electorate quota. He stated that any changes to the boundaries may raise issues elsewhere. Depending on further changes to the boundaries he stated there was some merit in a constituency that included West Lothian in its name.

Options

15. The Commission is invited to consider alternative options and suggestions for constituencies.
16. The maps in this paper show alternative suggestions in block colours and existing ward boundaries in red. The black line denotes existing boundaries unless otherwise stated.
17. There were a number of alternative suggestions provided in Paper BS 71, attached as an Annex, and at the local inquiry.
18. The Commission will wish to review Paper BS 71 again, it considered alternative suggestions from:
 - the Scottish Liberal Democrats in the west of Edinburgh;
 - Linlithgow SNP Constituency Association in West Lothian and the west of Edinburgh;
 - Scottish Conservative and Union Party in the west of Edinburgh;
 - Ben Macpherson MSP, by Muirhouse; and
 - members of the public made suggestions by Abbeyhill, Gorgie/ Dalry, Oxfangs, Pennywell and Wallyford.
19. At the Edinburgh local inquiry there was support for the alternative suggestions from Linlithgow SNP Constituency Association and Scottish Liberal Democrats both considered in Paper BS 71.
20. At the Peebles local inquiry, the Scottish Conservative and Unionist Party discussed an alternative suggestion that focussed on Edinburgh and the Lothians. It differed from their earlier submission. Their suggestion works within the Commission's proposed council area groupings. Their suggested boundaries follow existing constituency boundaries, ward boundaries, community council boundaries and geographical features. They suggest an:
 - Edinburgh Southern constituency that aims to better reflect UK Parliament boundaries. It includes the whole of the Liberton/Gilmerton ward and large parts of the Morningside and Southside/Newington wards containing much of the areas of Merchiston, Morningside and Newington;
 - Edinburgh Eastern constituency that avoids a three-council area constituency. It includes the whole of the Craigmillar/Duddingston and Portobello/Craigmillar wards along with part of Leith Walk ward east Easter Road and also parts of the Restalrig area south of Leith Links;

- Edinburgh Northern and Leith constituency that keeps Muirhouse and Pilton in a single constituency. It includes the whole of the Forth ward and stretches from the boundary between Silverknowes and Muirhouse/Salvesen community council areas in the west to Seafield in the east and also takes in parts of Warriston, Inverleith and Leith Central community council areas;
- Edinburgh Western constituency that includes Corstorphine, Murrayfield and Silverknowes and the western part of the Sighthill/Gorgie ward west of Balgreen Road;
- Edinburgh Pentlands constituency that may better reflect local communities in Oxfgangs, Fairmilehead and Colinton along with Craiglockhart and North Merchiston;
- Edinburgh Central constituency that includes the City Centre ward, the Inverleith ward, and the area around the Western General, which we suggest should be included in Edinburgh Western and also part of the Southside/Newington ward which it currently contains;
- Linlithgow and Cramond constituency, similar to the proposed Edinburgh Forth and Linlithgow constituency but it no longer includes Silverknowes but does include Ratho and Torphichen;
- Bathgate and Almond Valley constituency and Livingston constituency, similar to the provisional proposals;
- East Lothian constituency that includes Prestonpans rather than Tranent;
- Midlothian North, Fa'side and Musselburgh constituency that includes Musselburgh, Tranent and Dalkeith; and
- Midlothian South constituency, similar to the provisional proposals except Mayfield and Eskbank.

21. A table of the Scottish Conservative and Unionist Party suggestion is shown in the table below and a map is shown in Appendix F.

Proposed constituencies	Electorate	Variation from electoral quota	Wards
Bathgate and Almond Valley	56,902	-5.0%	West Lothian 6(part), 7(part), 8, 9(part)
East Lothian	55,351	-7.6%	East Lothian 2, 3(part), 4, 5(part), 6
Edinburgh Central	62,458	4.3%	City of Edinburgh 5(part), 6(part), 7(part), 9(part), 10(part), 11(part), 12(part), 15(part)
Edinburgh Eastern	63,849	6.6%	City of Edinburgh 11(part), 12(part), 13(part), 14, 15(part), 17
Edinburgh Northern and Leith	62,994	5.2%	City of Edinburgh 1(part), 4, 5(part), 12(part), 13(part)
Edinburgh Pentlands	61,810	3.2%	City of Edinburgh 2(part), 8, 9(part), 10(part)
Edinburgh Southern	64,632	7.9%	City of Edinburgh 10(part), 15(part), 16
Edinburgh Western	62,779	4.8%	City of Edinburgh 1(part), 3, 5(part), 6(part), 7(part)
Linlithgow and Cramond	54,186	-9.5%	City of Edinburgh 1(part), 2(part) West Lothian 1, 2, 5(part), 9(part)

Livingston	57,312	-4.3%	West Lothian 3, 4, 5(part), 6(part), 7(part)
Midlothian North, Fa'side and Musselburgh	55,373	-7.6%	Midlothian 3, 5(part) East Lothian 1, 3(part), 5(part)
Midlothian South	53,946	-9.9%	Midlothian 1, 2, 4, 5(part), 6

22. The advantages of the Scottish Conservative and Unionist Party suggestion are it:

- addresses a number of concerns raised during the initial consultation such as the proposed boundary by Prestonpans, the Pennywell Road boundary in Muirhouse, a constituency containing parts of three council areas and suggestions that the proposed Edinburgh Southern constituency boundary is too great a change from previous constituency boundaries of the same name (Rule 4); and
- considers the proposed constituency - council area groupings.

23. The disadvantages of the Scottish Conservative and Unionist Party suggestion are that it:

- splits the Leith Walk ward between three constituencies (Rule 4);
- presents an unusually shaped Edinburgh Western constituency; and
- proposes a Linlithgow and Cramond constituency, similar to the proposed Edinburgh Forth and Linlithgow constituency.

24. At its meeting of 5 October 2023, the Commission also discussed Paper BS 73 - Alternative constituency design groupings - and asked the Secretariat to develop alternative proposals for constituencies based on different council area groupings that might identify possible improvements to the provisional proposals. Three alternative options are discussed within a new grouping of City of Edinburgh and East Lothian Council areas. However, these are interdependent on the Commission agreeing new constituency designs within a grouping of: Argyll and Bute, East Dunbartonshire, Falkirk, North Lanarkshire, South Lanarkshire, West Dunbartonshire and West Lothian Council areas; and Midlothian and Scottish Borders Council areas.

Option 1 (Edinburgh and East Lothian Council areas)

25. Option 1 proposes eight constituencies within a new grouping of City of Edinburgh and East Lothian Council areas.

26. Option 1 retains five existing constituencies (East Lothian, Edinburgh Central, Edinburgh Pentlands, Edinburgh Southern and Edinburgh Western) and proposes three new constituencies in order to redistribute electors in the north of Edinburgh.

27. The boundary between the proposed Edinburgh Northern and Edinburgh North East constituencies follows ward boundaries but places the Leith and Leith Walk wards in separate constituencies.

28. Option 1 splits Portobello/Craigmillar ward between the proposed Edinburgh North East and Edinburgh East and Musselburgh constituencies following the East Coast Mainline railway by Niddrie and then the Brunstane Burn, two recognisable bounding features.

29. The Edinburgh East and Musselburgh constituency also contains Gracemount and Gilmerton. Its boundary follows the existing Scottish Parliament boundary in the area.

30. This option also retains the existing East Lothian constituency in response to the representations made at the Musselburgh Local Inquiry. This acknowledges the local ties in the area whilst accepting that the variation from the electoral quota for the proposed East Lothian consistency is +12.7%.

31. Below is a table of Option 1 and a map can be found at Appendix G.

Option 1 (Edinburgh and East Lothian Council areas)			
Proposed constituencies	Electorate	Variation from electoral quota	Wards
East Lothian	67,523	12.7%	East Lothian 2,3(part),4-7
Edinburgh Central	65,240	8.9%	City of Edinburgh 5(part),6(part),7(part), 9(part),10(part),11(part),15(part)
Edinburgh East and Musselburgh	55,605	-7.2%	East Lothian 1,3(part) City of Edinburgh 16(part),17(part)
Edinburgh North East	58,113	-3.0%	City of Edinburgh 4,5(part),12
Edinburgh Northern	54,637	-8.8%	City of Edinburgh 13,14,17(part)
Edinburgh Pentlands	59,274	-1.0%	City of Edinburgh 2,7(part),8(part),9(part),10(part)
Edinburgh Southern	62,786	4.8%	City of Edinburgh 8(part),9(part),10(part), 15(part),16(part),17(part)
Edinburgh Western	65,827	9.9%	City of Edinburgh 1,3,5(part),6(part)

32. The advantages of Option 1 are that it:

- minimises change in much of Edinburgh and East Lothian by retaining five of the existing Scottish Parliament constituencies (Rule 2 and 4);
- where change is necessary strong boundaries have been used such as electoral wards or ground features (Rule 4);
- all but one of the proposed constituencies are within 10% of the electoral quota. The existing East Lothian constituency at 12.7% is retained to maintain local ties by Prestonpans;
- avoids a constituency that contains parts of three council areas (Rule 4);and
- avoids an Edinburgh Forth and Linlithgow constituency which was opposed during the earlier consultation and at the Edinburgh local inquiry (Rule 4).

33. The disadvantages of Option 1 are that it:

- retains an East Lothian constituency which has variation from the electoral quota of +12% (Rule 2);
- may not reflect local ties in Leith as it places Leith Walk ward and Leith ward in separate constituencies (Rule 4);
- the boundary follows Pennywell Road as in the provisional proposals and existing constituencies. It would be possible to move the boundary west

- and add 4,395 electors from Muirhouse/Salvesen community council area but this would retain only four of the existing constituencies (Rule 4);and
- is interdependent on the Commission agreeing other new groupings.

Option 2 (Edinburgh and East Lothian Council areas)

34. Option 2 also proposes eight constituencies within a new grouping of City of Edinburgh and East Lothian Council areas.

35. Whilst this option splits nine wards (compared to 12 split wards in the existing arrangements and 11 in Option 1) the proposed boundaries follow other recognised boundaries:

- the proposed boundary between the Edinburgh North and Edinburgh Northwest constituencies follows school catchment and community council boundaries, keeping communities on both sides of Pennywell Road within the same constituency. It also follows ward boundaries;
- the proposed Edinburgh Leith and Edinburgh North constituencies have a boundary where the Leith Walk ward is split along Bonnington Road;
- the proposed Edinburgh Central constituency contains all or parts of the New Town, Old Town, West End, Tollcross, Southside, Merchiston and Marchmont areas of the city. The southern boundary follows recognised boundaries such as a railway, ward, community council and existing constituency boundaries;
- Edinburgh Southern constituency responds to suggestions made during the consultation wherever possible, given the challenges posed by electorate distribution elsewhere in the city;
- Most of the Fountainbridge/Craiglockhart ward is placed in the Edinburgh South West and Pentlands constituency rather than Edinburgh Southern constituency to accommodate changes elsewhere. The “Edinburgh South” railway line is again used as the boundary in this area. This has previously been used as a boundary for the Scottish Parliament between 1999-2011 and UK Parliament Constituencies between 1997 and 2005;
- the proposed Edinburgh Southern and Edinburgh South West and Pentlands boundary is moved further east to respond to comments from those in the Gallolee area to ensure that area is retained in a constituency with Redford and Bonaly; and
- Tranent is placed in a constituency with Musselburgh and areas to the east of City of Edinburgh council area. This allows Prestonpans to remain in an East Lothian constituency.

36. A table of Option 2 can be seen below and a map can be found at Appendix H.

Option 2 (Edinburgh and East Lothian Council areas)			
Proposed constituencies	Electorate	Variation from electoral quota %	Wards
East Lothian	57,462	-4.1	East Lothian 2,3(part),4,5,6
Edinburgh Central	63,725	6.4	City of Edinburgh 7(part),9(part),10(part),11,15(part)
Edinburgh Leith	64,322	7.4	City of Edinburgh 12(part),13,14
Edinburgh North	63,829	6.6	City of Edinburgh 1(part),4,5,12(part)

Edinburgh North West	59,765	-0.2	City of Edinburgh 1(part),2(part),3,6(part)
Edinburgh South West and Pentlands	58,868	-1.7	City of Edinburgh 2(part),7(part),8(part),9(part)
Edinburgh Southern	63,665	6.3	City of Edinburgh 8(part),10(part),15(part)
Musselburgh and Edinburgh East	57,369	-4.2	East Lothian 1,3(part) City of Edinburgh 17

37. The advantages of Option 2 are that it:

- Proposes all constituencies are within 10% variation from the electoral quota (Rule 2);
- retains Prestonpans in an East Lothian constituency (Rule 4);
- does not use Pennywell Road as a constituency boundary (Rule 4);
- aims to use recognised boundaries or ground features (Rule 4);
- avoids an Edinburgh Forth and Linlithgow constituency which was opposed during the earlier consultation and at the Edinburgh local inquiry (Rule 4); and
- avoids a three-council area constituency (Rule 4).

38. The disadvantages of Option 2 are that it:

- may break local ties by Tranent and may face similar opposition to that received for the provisional proposals by Prestonpans (Rule 4);
- is interdependent on the Commission agreeing other new groupings; and
- presents a large number of split wards (nine) across City of Edinburgh council area although this is fewer than split in existing arrangements (11).

Option 3 (Edinburgh and East Lothian Council areas)

39. Option 3 also proposes eight constituencies within a new grouping of City of Edinburgh and East Lothian Council areas.

40. Option 3 proposes constituency boundaries that aim to follow ward boundaries.

41. Option 3 only splits four wards between constituencies. These are the:

- Colinton/Fairmilehead ward where the boundary travels behind the houses in Colinton Mains and then along Dreghorn Link to the city-bypass (A720 road);
- City Centre ward where the boundary follows Lothian Road, Princes Street and Waterloo Place. This boundary was previously a Scottish Parliament boundary;
- Leith Walk ward where the boundary follows Bonnington Road, Newhaven Road and the Water of Leith; and
- Craightinny/Duddingston ward is split on the eastern side of Craightinny Golf Course and mainline railway.

42. A table of Option 3 can be seen below and a map can be found at Appendix I.

Option 3 (Edinburgh and East Lothian Council areas)
--

Proposed constituencies	Electorate	Variation from electoral quota %	Wards
Edinburgh West	66,001	10.2	City of Edinburgh 1,3,6
Edinburgh Forth	65,059	8.6	City of Edinburgh 4,5, 11(part),12(part)
Edinburgh Leith	64,955	8.4	City of Edinburgh 12(part),13, 14(part)
Edinburgh Central and South	64,122	7.0	City of Edinburgh 11(part), 15,16
Edinburgh Southern	57,141	-4.6	City of Edinburgh 8(part), 9,10
Edinburgh Pentlands	54,581	-8.9	City of Edinburgh 2,7,8(part)
Musselburgh and Edinburgh East	60,993	1.8	City of Edinburgh 14(part),17 East Lothian 1,3
East Lothian	56,153	-6.3	East Lothian 2,4,5,6

43. The advantages of Option 3 are that it:

- only splits four wards across eight constituencies (Rule 4);
- follows recognised boundaries (Rule 4);
- avoids proposing an Edinburgh Forth and Linlithgow constituency which was opposed in consultation (Rule 1 and 4);
- avoids proposing a constituency that contains parts of three council areas (Rule 1); and
- responds to suggestions to retain Prestonpans in an East Lothian constituency with East Lothian (Rule 4);

44. The disadvantages of Option 2 are that it:

- uses the Pennywell Road as a boundary in the north of Edinburgh (Rule 4);
- proposes oddly shaped constituencies in the case of Edinburgh Central and South and Musselburgh and Edinburgh East by following ward boundaries (Rule 4); and
- is interdependent on the Commission agreeing other new groupings.

Summary

45. The existing constituencies sit within the following council area groupings: Edinburgh – six constituencies, West Lothian – two constituencies; and East Lothian, Midlothian, Scottish Borders – four constituencies.

46. The electorate of five of the existing 12 constituencies are over 15% variation from the electorate quota and three of those are over 20%.

47. Although the electoral franchise for the Scottish Parliament has changed since the First Review. A broad comparison shows that the electorate for these areas has grown by over 100,000 and nearly 20% since 2007.

Council area	Electorate 1 July 2007	Electorate 1 Sept 2022	Constituency theoretical entitlement – 2 nd Review
East Lothian	72,962	88,539	1.5

Edinburgh	337,284	400,466	6.7
Midlothian	61,683	76,131	1.3
West Lothian	122,893	146,456	2.4
Total	594,822	711,592	11.9

48. In West Lothian there are currently two constituencies but it now has an entitlement to 2.4 constituencies. Similarly, Edinburgh currently contains six constituencies but it now has an entitlement to 6.7 constituencies.
49. The provisional proposals designed 12 new constituency boundaries within a constituency grouping of Edinburgh, East Lothian, Midlothian and West Lothian Council areas.
50. During the consultation on the provisional proposals for constituencies East Lothian Council objected to the provisional proposals triggering a local inquiry in that area. The Commission also conducted a local inquiry in Edinburgh because there was strong opposition to the proposed Edinburgh Forth and Linlithgow constituency from residents in the north west of Edinburgh who stated they had nothing to connect them with Linlithgow or West Lothian. There was also opposition to the proposals in the south of Edinburgh.
51. At the Musselburgh local inquiry there was opposition to both the proposed boundary by Prestonpans and a Midlothian North and Musselburgh constituency covering parts of three different council areas.
52. At the Edinburgh local inquiry there was opposition to the boundary at Pennywell Road, support for the Linlithgow SNP Constituency Association suggestion for constituencies in West Lothian and the west of Edinburgh and also support for an alternative suggestion from the Scottish Liberal Democrats to retain the whole of Almond ward in a single constituency.
53. The Assistant Commissioner's Reports made no recommendations but asked the Commission to review all the alternative suggestions that had been submitted.

Midlothian

54. There were few comments regarding the provisional proposals in Midlothian.

East Lothian

55. There was opposition to the proposed Midlothian North and Musselburgh constituency covering parts of three different council areas. The existing UK Parliament Dumfriesshire, Clydesdale and Tweeddale constituency (2005 onwards) includes parts of three council areas.
56. There was opposition to the proposals by Prestonpans because they broke local ties. No-one at the Musselburgh local inquiry offered an alternative solution. In order to retain Prestonpans with neighbouring communities to its east in an East Lothian constituency it would be necessary to either: retain an East Lothian constituency with above average variation from the electorate quota; place Tranent in a constituency with Musselburgh and parts of Edinburgh or Midlothian; or link East Lothian with Scottish Borders but the Lammermuir Hills act as a natural boundary between those areas.

57. There were a number of suggestions to retain the existing East Lothian constituency. It has 67,523 electors and variation from the electorate quota at 12.7%. During the provisional proposals constituency consultation, the Commission proposed an Inverness and Nairn constituency with 69,113 electors and variation from the electorate quota of 15.4%.

Edinburgh

58. There was opposition to Pennywell Road being used as a constituency boundary because both sides of Pennywell Road have common interests and issues. It is currently a ward, Scottish Parliament and UK Parliament boundary. Pennywell Road is a wide thoroughfare, which until recently had two lanes of traffic in each direction. Following the 2023 Review, the UK Parliament constituency boundary will no longer follow Pennywell Road, it will follow school catchment and community council boundaries by Silverknowes, further west.

59. There was opposition to an Edinburgh Forth and Linlithgow constituency because there is little to connect urban Muirhouse with rural Linlithgow.

60. There was opposition to the proposed Edinburgh South constituency because it broke local ties in the area

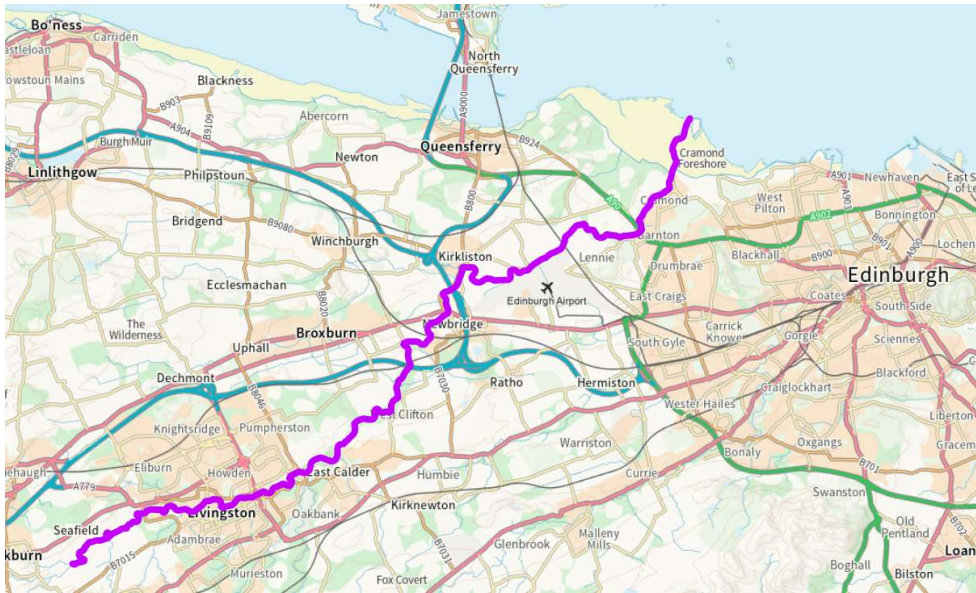
61. At the Edinburgh local inquiry there was support for the Scottish Liberal Democrats alternative suggestion that focussed on the west of Edinburgh. It is considered in Paper BS 71.

West Lothian

62. There was support for the Linlithgow SNP Constituency Association alternative suggestion that focussed on boundaries in West Lothian and the west of Edinburgh. It is considered in Paper BS 71.

63. In West Lothian, there were suggestions to consider the historical county boundary of Linlithgowshire. The county boundary is similar to the current West Lothian Council area boundary but it included Bo'ness (now in Falkirk Council area), Bathgate, South Queensferry and Kirkliston. The county has also been named West Lothian. A map of Linlithgowshire is at Appendix J.

64. There were suggestions that the River Almond would act as a more natural boundary between Edinburgh and West Lothian Council areas and for constituencies. South Queensferry and Kirkliston are currently part of Edinburgh and sit to the west of the river. There are approximately 12,900 electors in Kirkliston and South Queensferry. Adding these to West Lothian (146,456) would create an area with 159,356 electors. Three constituencies within a larger West Lothian would create constituencies with an average electorate of 53,119. A map showing the path of the River Almond from West Lothian to Cramond is shown below.



65. There were suggestions to include West Lothian in constituency names. The Commission will have the opportunity to consider constituency names once it has agreed to constituency boundaries.

Options

66. The Commission can consider revised proposals within a grouping of City of Edinburgh, East Lothian, Midlothian and West Lothian Council areas or a grouping of City of Edinburgh and East Lothian Council areas. A grouping of Edinburgh and East Lothian Council areas is interdependent on the Commission agreeing alternative groupings of: three constituencies within Midlothian and Scottish Borders Council areas; and 17 constituencies within Argyll and Bute, East Dunbartonshire, Falkirk, North Lanarkshire, South Lanarkshire, West Dunbartonshire and West Lothian Council areas.

67. Within a grouping of City of Edinburgh, East Lothian, Midlothian and West Lothian Council areas there were alternative suggestions, discussed in Paper BS 71:

- The Linlithgow SNP Constituency Association suggestion places Muirhouse in an Edinburgh Northern and Leith constituency but it also retains the proposed boundaries by Prestonpans;
- The Scottish Liberal Democrats suggestion aims to follow ward boundaries in the south and west of Edinburgh but retains the Pennywell Road boundary;
- The Scottish Conservative and Unionist Party made two suggestions. One in Paper BS 71 aims to follow ward boundaries in the south and west of Edinburgh but retains a constituency that includes both Muirhouse and Linlithgow. Their suggestion from the Peebles local inquiry, discussed in this paper, responded to the consultation responses during both the initial consultation and at the local inquiries.
- There were other suggestions considered in Paper BS 71 by:
 - Abbeyhill – the suggestion to include the whole of the Abbeyhill area in a central Edinburgh constituency isn't considered in options but could be accommodated in Option 2 or 3 but may propose an oddly shaped constituency boundary;

- Gorgie/Dalry – two similar suggestions to split the Gorgie /Dalry ward along the railway in the area are broadly similar to the boundary adopted in Option 2. Again, this could be used in the other options but may propose oddly shaped constituency boundaries ;
- Southern Edinburgh – suggestion to split Colinton/Fairmilehead ward along UK constituency boundaries is closest to Options 1 and 3 as they follow existing ward boundaries in the area. Another suggested keeping Colinton/Fairmilehead ward whole and this is the case in Option 1; and
- Wallyford – none of the Options utilise this but all could accommodate it given the small numbers of electors in the area.

68. Three options have been developed for consideration within a grouping of City of Edinburgh and East Lothian Council areas. They include:

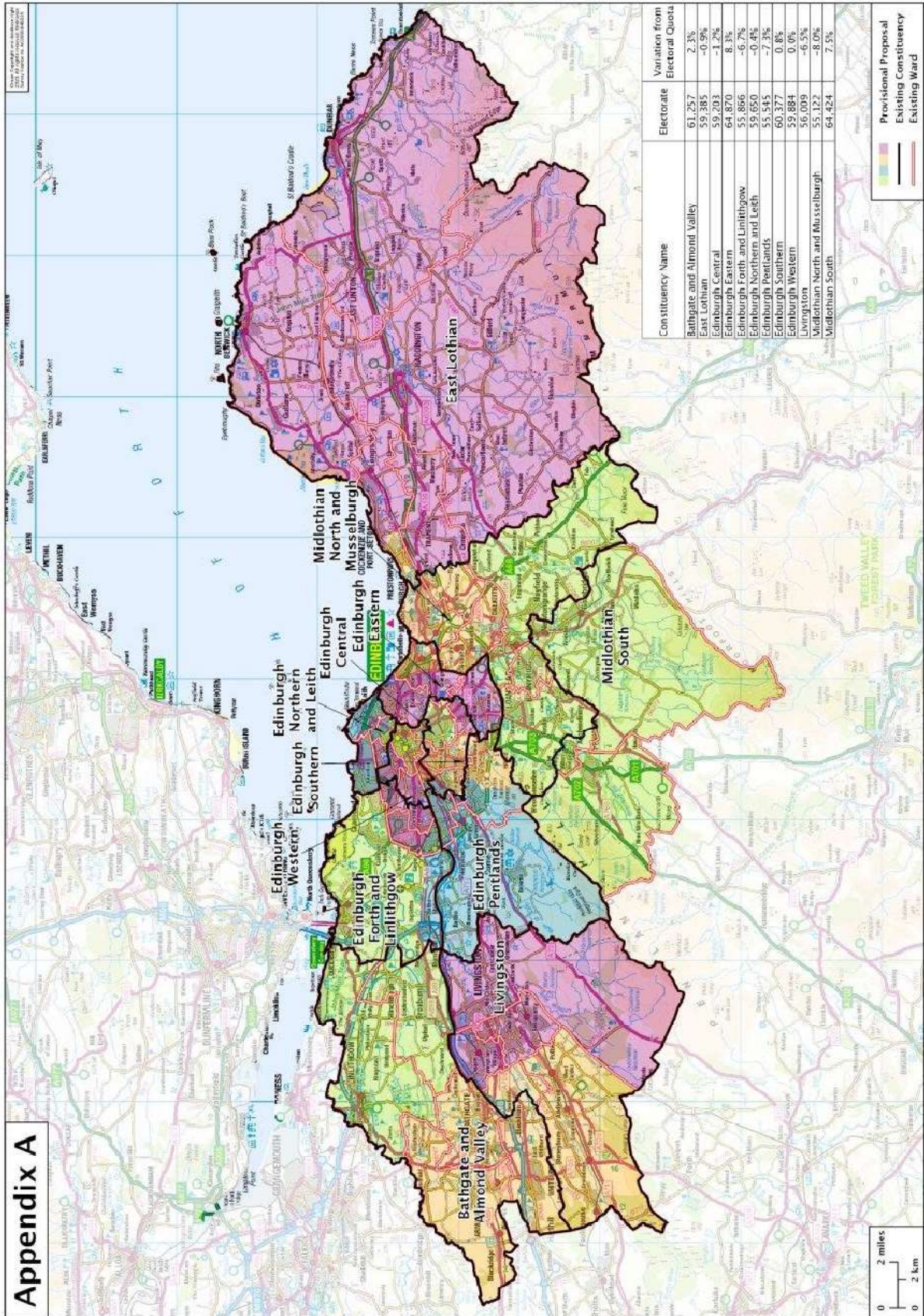
- Option 1 retains five existing constituencies, avoids breaking local ties by Prestonpans but also retains a Pennywell Road boundary and may split Leith between constituencies;
- Option 2 adds Tranent to a Musselburgh and Edinburgh East constituency and avoids the use of Pennywell Road as a boundary; and
- Option 3 aims to follow ward boundaries but creates some oddly shaped constituencies.

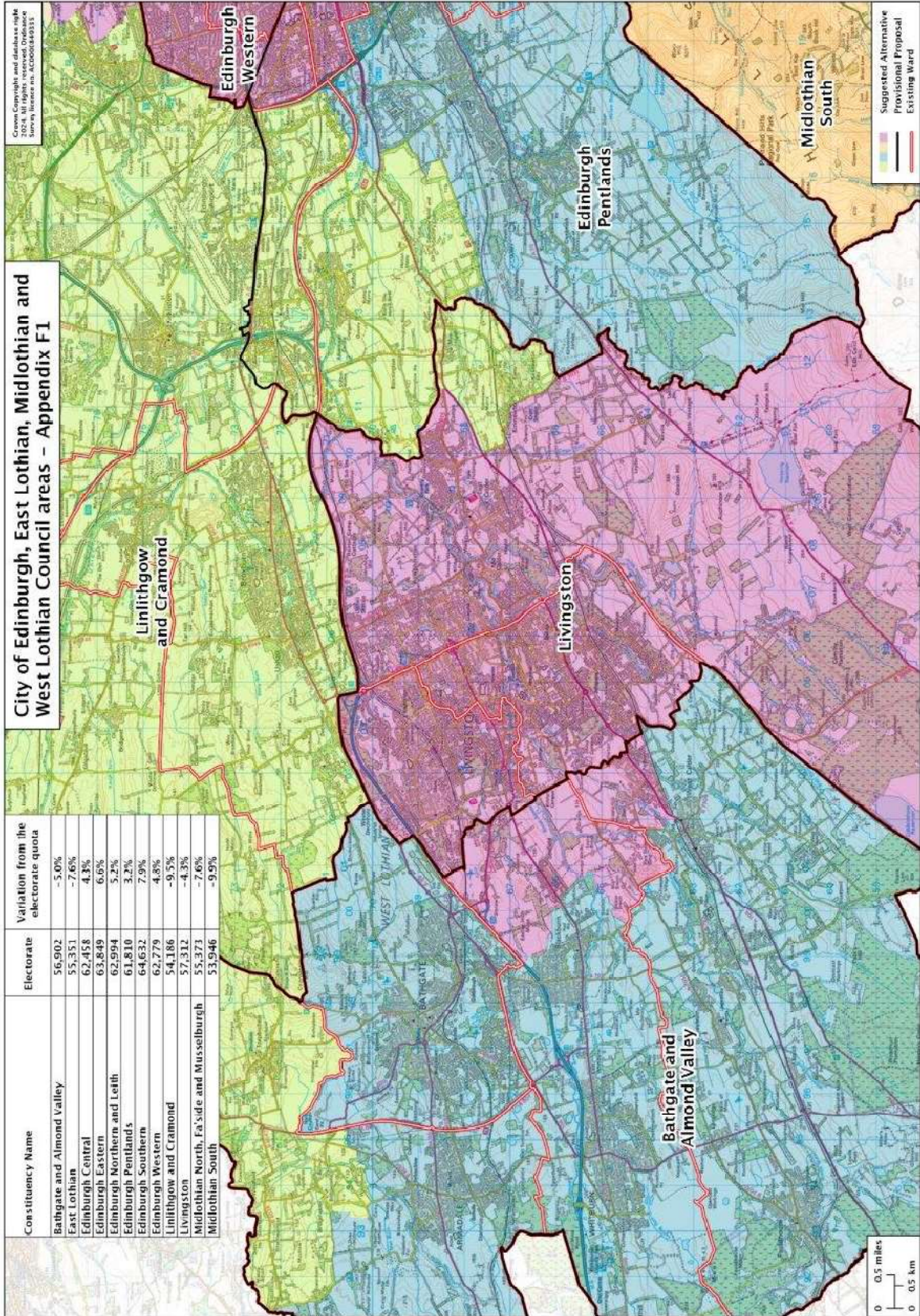
Conclusion

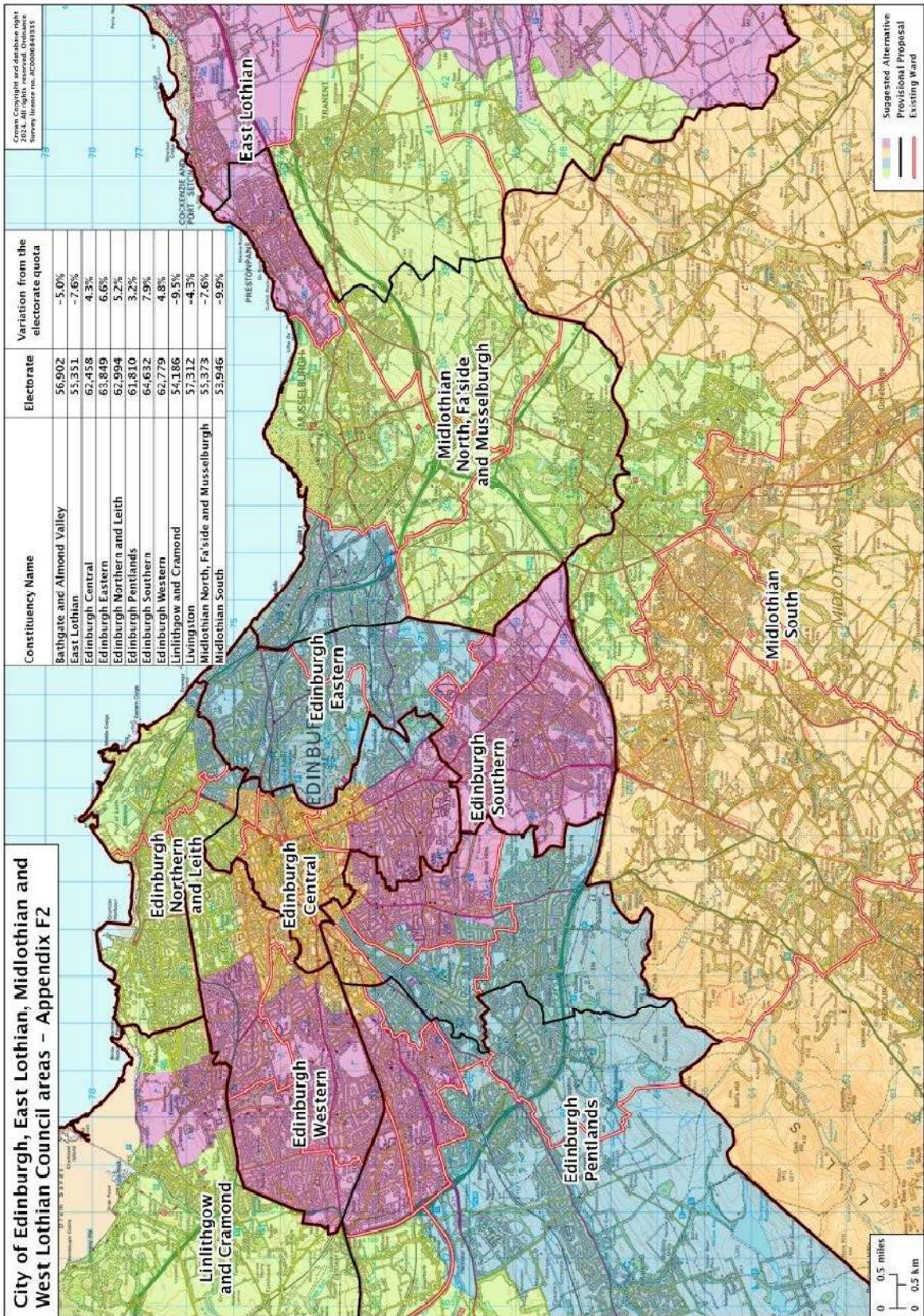
69. The Commission is invited to agree its Revised Proposals constituencies Edinburgh and surrounding council areas for public consultation, subject to satisfactory constituencies being designed in other groupings.

**Secretariat
February 2024**

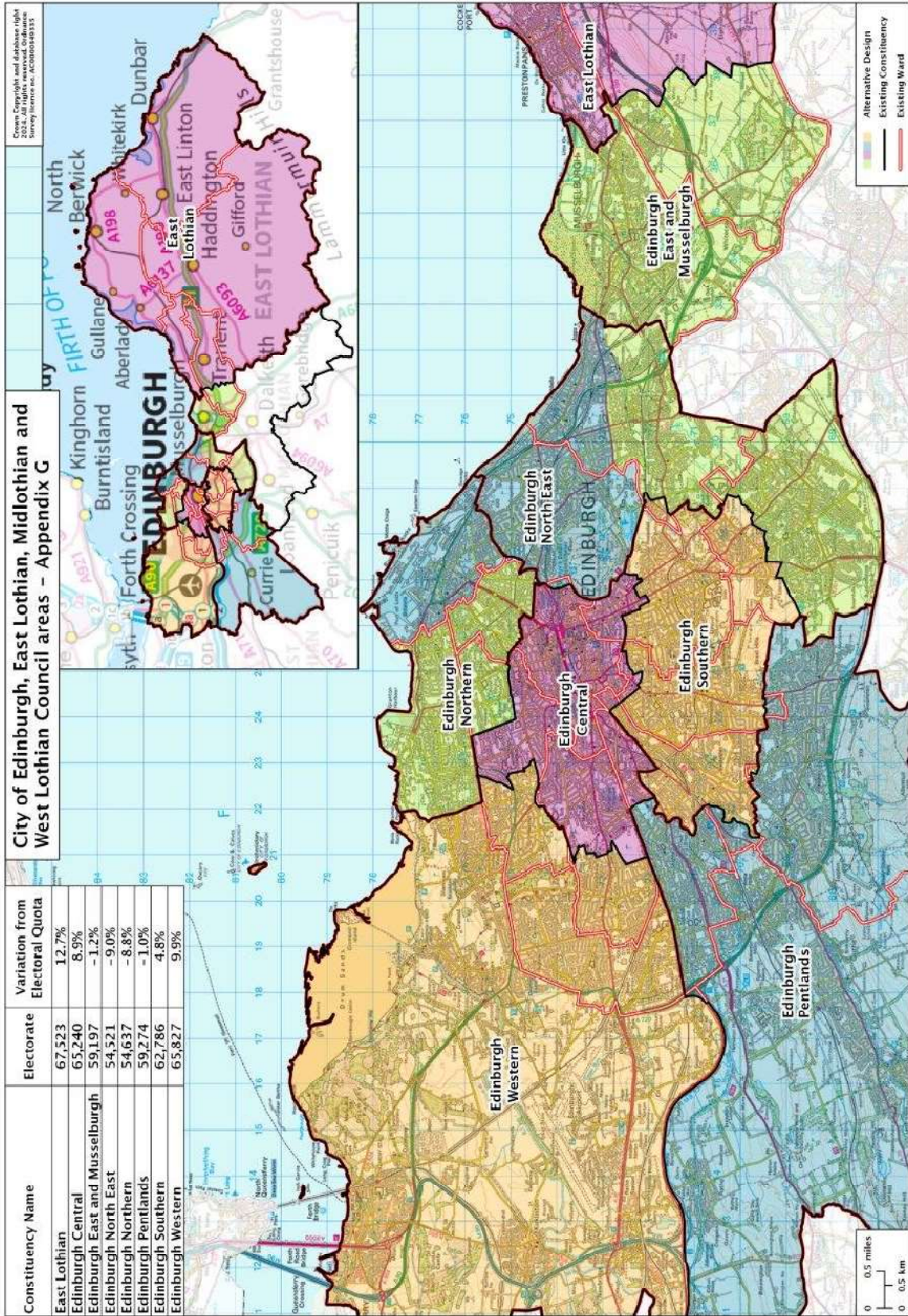
Appendices B and C on website

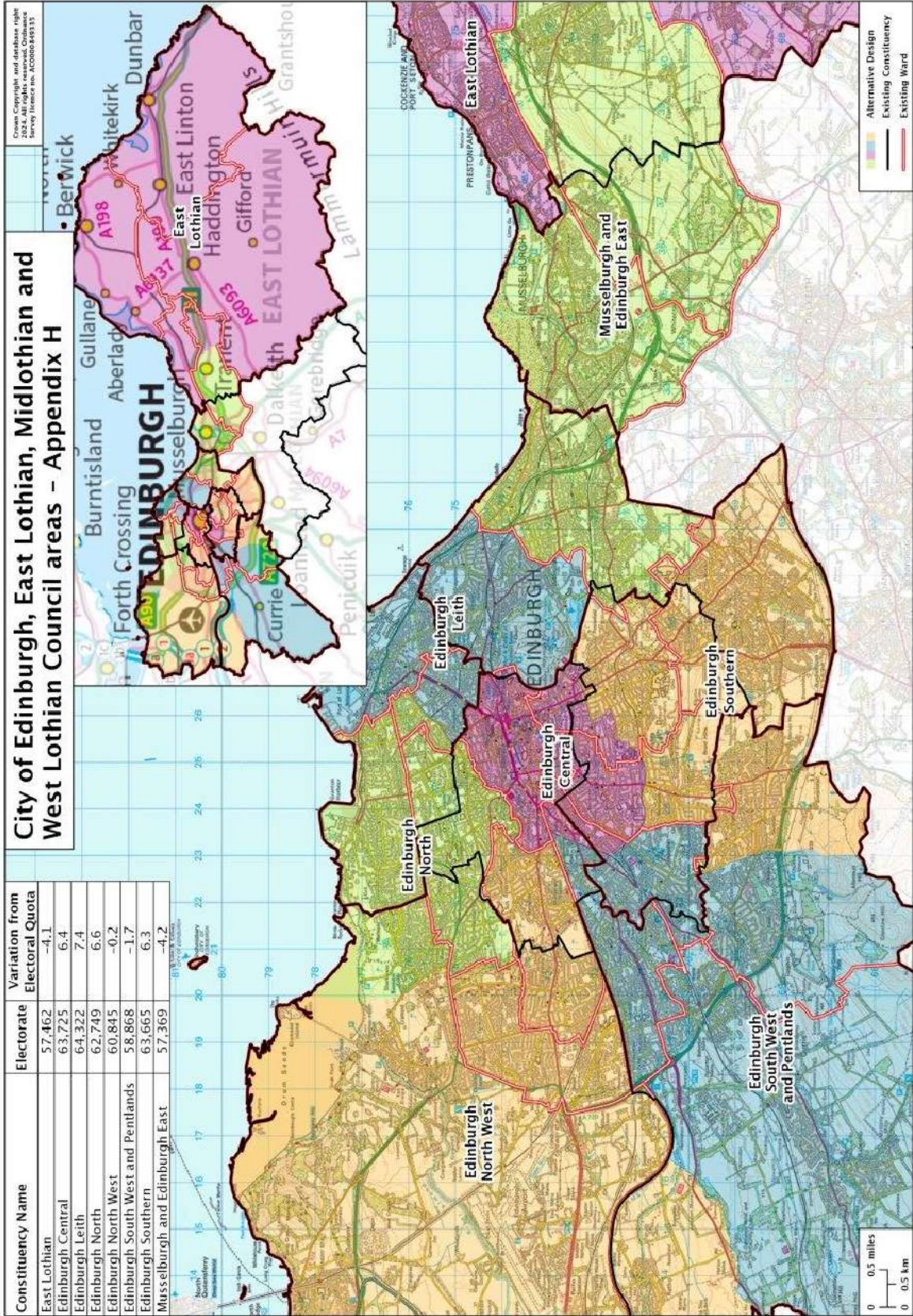


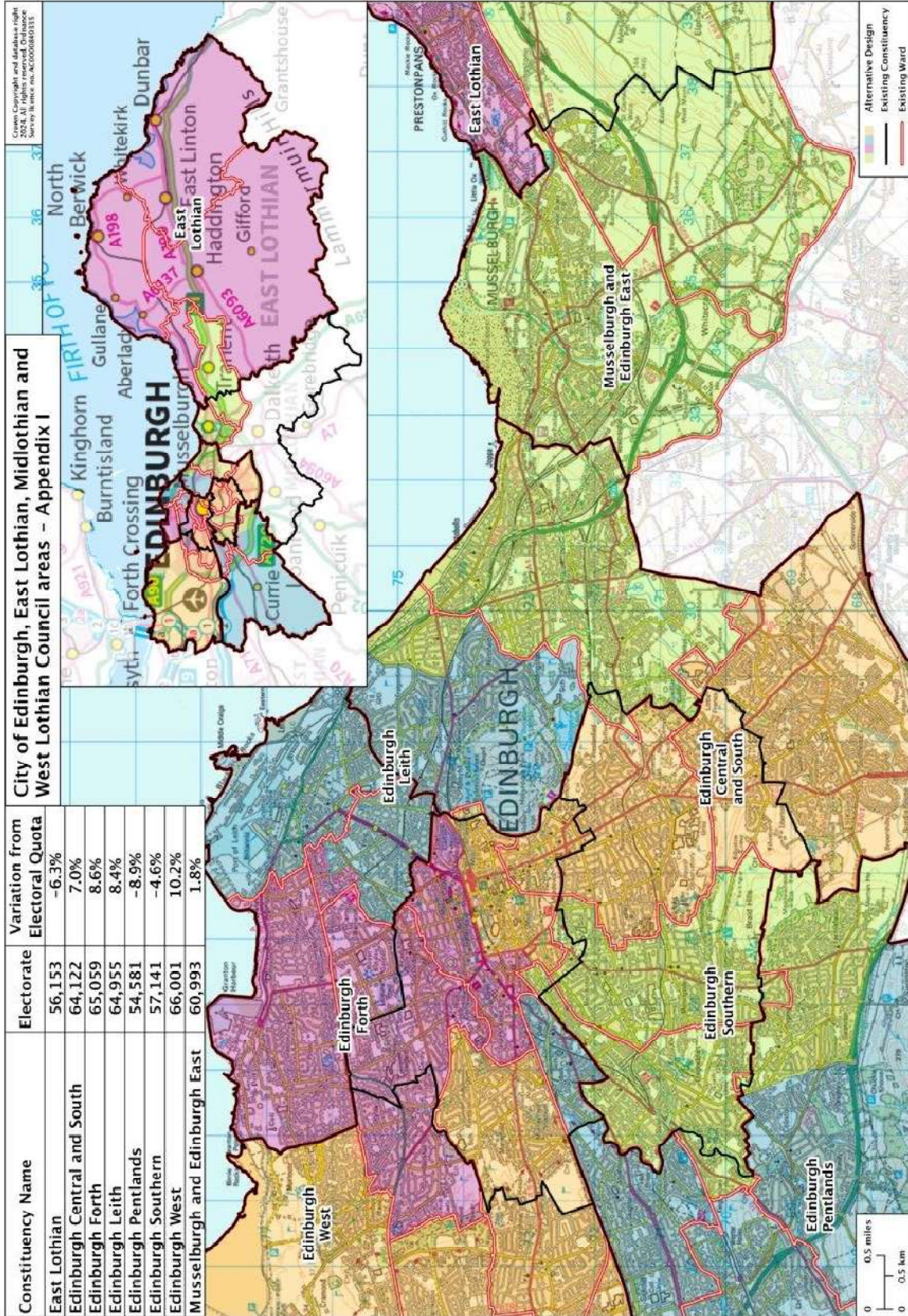


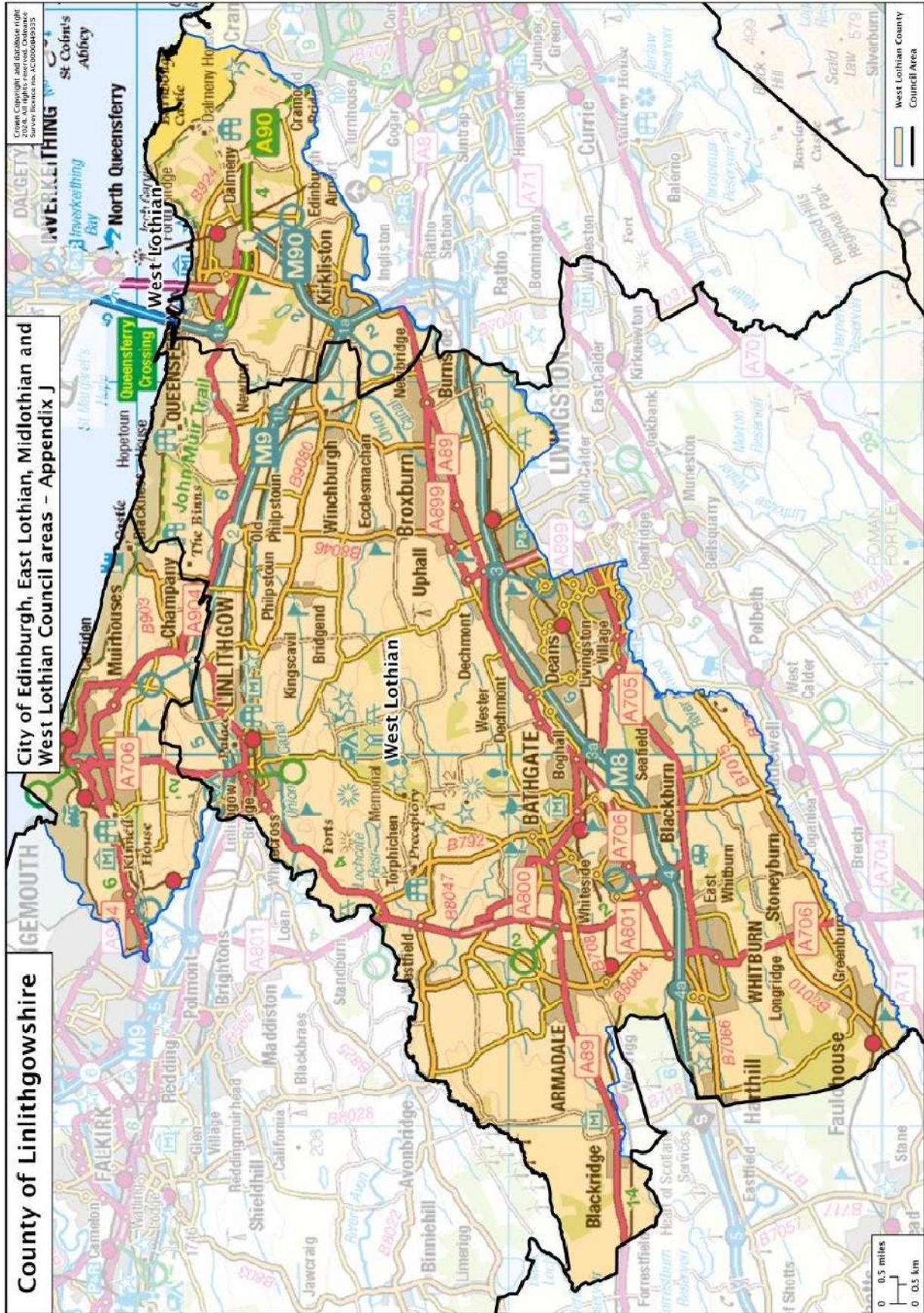


Copyright © 2024. All rights reserved. Ordnance Survey Licence No. AC0000494335









City of Edinburgh, East Lothian, Midlothian and West Lothian Council areas - Appendix J

County of Linlithgowshire