

**The Second Review of
Scottish Parliament Boundaries**

Further Proposals for Constituencies



Introduction

1. Boundaries Scotland is an independent advisory non-departmental public body sponsored and wholly funded by the Scottish Government. Our role in this review is to make recommendations for: the boundaries and names for constituencies and regions for the Scottish Parliament.

Second Review of Scottish Parliament Boundaries

2. We commenced the Second Review of Scottish Parliament Boundaries in September 2022. The Review is required by the Scotland Act 1998 and we must submit a report containing our recommendations to Scottish Ministers by 1 May 2025. If subsequently approved by the Scottish Parliament, the new boundaries will be effective at the next Scottish Parliament election, expected in May 2026.
3. The rules state we must review and make recommendations for the boundaries of 73 constituencies and eight regions, each represented by seven MSP's. Three constituencies are defined in legislation and are not under review, they are: Na h-Eileanan an Iar; Orkney Islands; and Shetland Islands. The overall number of MSPs will remain at 129.
4. Our review does not affect UK Parliament boundaries, council area or ward boundaries or any services provided within them.
5. For further information on the policies and procedures we have adopted to underpin this review and the legal requirements for constituency and region design, please refer to our Policies and Procedures booklet, which is available on our website www.boundaries.scot.
6. The existing boundaries have remained unchanged since 2011 and were used in the 2011, 2016 and 2021 Scottish Parliament elections.
7. Since the last review which reported in 2010 there has been significant change to the electorate, including the extension of the franchise for Scottish Parliamentary elections to those 16 and over. Changes to the population and the electorate have varied across Scotland, with some areas experiencing significant increases and others remaining relatively unchanged or falling. Even areas which have not experienced population growth or reduction may find that the constituency and/or region boundaries alter as a result of change required elsewhere to ensure that all constituencies and regions are of a similar electoral size.
8. We consulted on our Provisional Proposals for constituencies in May 2023 and on our Revised Proposals for constituencies between April and May 2024. As a result of the responses to those consultations we have held seven local inquiries across Scotland.
9. This review is of electoral boundaries (constituencies and regions) only and therefore does not affect any other boundaries (UK constituencies, local authorities, community councils, health boards etc). For individuals, this review does not affect the council area in which they live nor the way local services are accessed.

Our Further Proposals – Constituencies

10. There are 44 constituencies that are unchanged from the Revised Proposals stage and Boundaries Scotland has agreed to adopt the Revised Proposals as its Final Recommendations, subject to satisfactory constituencies being designed in neighbouring areas. There will be no consultation on these 44 constituencies at this stage.
11. After listening to submissions made during the consultation on the Revised Proposals and during the Falkirk Local Inquiry, the constituencies of Eastwood, Falkirk East and Falkirk West have reverted back to their existing constituency boundaries and names. There will be no further consultation in relation to these three constituencies at this stage.
12. Maps of each proposed constituency at this Further Proposals stage can be found in this document with a description of what has changed. A table also shows all of the constituency electorates and whether they are being consulted on at the Further Proposal stage.
13. We have developed our Further Proposals for constituencies using electorate data from 1 September 2022. The number of electors registered in each council area electoral ward can be found on our website.

Public consultation on our Further Proposals for Constituencies

14. We are now consulting with the public on our Further Proposals for constituencies. Details of how to participate in the consultation are given below. This public consultation will inform our Final Recommendations which we will submit in 2025.
15. The public consultation on our Further Proposals for constituencies runs from 26 September until 26 October 2024.
16. You can tell us what you think of our proposals by leaving a comment on our consultation site: consult.boundaries.scot.
17. On the consultation site you can view the boundaries of our Further Proposals for constituencies and see the changes from our earlier consultation. Maps of each constituency and further information will also be available to download from our website.
18. We welcome all comments on our proposals, whether in support or not, to help inform our deliberations. Maintaining public confidence in the review process is a key part of our responsibilities. We place great importance on representations made to us during the consultation stages of a review.
19. Where comments contain suggestions for improvements to our proposals it would be helpful if they were accompanied by an alternative proposal that takes account of statutory requirements and considers the consequences for the wider area. We also welcome suggestions of alternative names for constituencies. All comments will be evaluated by the quality of argument and the evidence provided, within the legislative framework for the review. We are unable to accept comments via social media.

20. Comments can be made in the following ways:

- Consultation site: **consult.boundaries.scot**
- in writing to: Boundaries Scotland, Thistle House, 91 Haymarket Terrace, Edinburgh EH12 5HD
- by email to: boundaries.scot@scottishboundaries.gov.uk

21. During the consultation period we display our proposals at Display Points. There is at least one Display Point in each proposed constituency. A full list of Display Points is available on our website www.boundaries.scot

Regions

22. We are also consulting on Provisional Proposals for regions at the same time as this consultation. Further information on our Provisional Proposals for regions and how to comment on them is available on our website.

Further Stages

23. After the consultation closes we will consider all responses received. Depending on the responses received we may need to hold local inquiries. If changes are made, to the Provisional Proposals for regions or the Further Proposals for constituencies, another one-month consultation will be held.

24. We will submit our Final Recommendations to the Scottish Parliament by May 2025.

Further Proposals for Constituencies

Constituency Name	Electorate	Area km ²	Burgh/County	Consult - Further Proposals	Chgs from exist	Chgs from revised
Aberdeen Central	55,994	27	Burgh		U	U
Aberdeen Deeside and North Kincardine	61,544	198	County	yes	N	N
Aberdeen Donside	62,531	92	Burgh		U	U
Aberdeenshire East	61,078	1,293	County		B	U
Aberdeenshire West	59,983	3,532	County		U	U
Airdrie	63,563	177	County	yes	BN	B
Almond Valley	65,050	203	County	yes	B	N
Angus North and Mearns	55,006	1,427	County		U	U
Angus South	58,622	1,319	County		U	U
Argyll and Bute	49,535	6,712	County		U	U
Ayr	62,566	49	Burgh		U	U
Banffshire and Buchan Coast	61,591	1,060	County		B	U
Caithness, Sutherland and Ross	56,532	12,792	County		U	U
Carrick, Cumnock and Doon Valley	59,218	2,083	County		U	U
Clackmannanshire and Dunblane	56,732	261	County		B	U
Clydebank and Milngavie	55,112	69	Burgh		B	U
Clydesdale	61,011	1,573	County		U	U
Coatbridge and Chryston	56,877	63	Burgh		U	U
Cowdenbeath	56,363	135	County		B	U
Cumbernauld and Kilsyth	57,040	171	County	yes	B	B
Cunninghame North	56,604	777	County		U	U
Cunninghame South	59,525	217	County		B	U
Dumbarton	56,129	599	County		B	U
Dumfriesshire	61,848	2,879	County		U	U
Dundee City East	56,030	28	Burgh		U	U
Dundee City West	56,705	35	Burgh		U	U
Dunfermline	62,615	214	County		B	U
East Kilbride	60,763	50	Burgh		U	U
East Lothian Coast and Lammermuirs	57,511	659	County	yes	BN	N
Eastwood	56,258	129	County		U	B

Edinburgh Central	64,114	11	Burgh	yes	B	B
Edinburgh Eastern, Musselburgh and Tranent	57,320	52	Burgh		BN	U
Edinburgh North Eastern and Leith	64,322	16	Burgh	yes	BN	N
Edinburgh North Western	60,313	95	Burgh	yes	BN	B
Edinburgh Northern	63,281	20	Burgh	yes	BN	B
Edinburgh South Western	59,967	88	Burgh	yes	BN	B
Edinburgh Southern	62,177	31	Burgh	yes	B	B
Erskine, Renfrew and Cardonald	62,842	65	Burgh	yes	BN	BN
Ettrick, Roxburgh and Berwickshire	55,131	3,194	County		U	U
Falkirk East	61,529	206	County		U	BN
Falkirk West	63,861	109	Burgh		U	BN
Fife North East	56,669	774	County		N	U
Galloway and West Dumfries	57,094	3,797	County		U	U
Glasgow Anniesland	60,545	17	Burgh	yes	B	N
Glasgow Baillieston and Shettleston	58,936	27	Burgh	yes	BN	N
Glasgow Cathcart and Pollok	66,213	33	Burgh	yes	BN	N
Glasgow Central	61,723	21	Burgh	yes	BN	B
Glasgow Easterhouse and Springburn	59,829	35	Burgh	yes	BN	N
Glasgow Kelvin and Maryhill	64,836	21	Burgh	yes	BN	N
Glasgow Southside	65,486	15	Burgh	yes	B	BN
Hamilton, Larkhall and Stonehouse	59,596	104	Burgh		U	U
Inverclyde	60,794	174	County		BN	U
Inverness and Nairn	65,464	1,094	County	yes	B	B
Kilmarnock and Irvine Valley	57,515	283	County		B	U
Kirkcaldy	60,642	100	Burgh		U	U
Linlithgow	66,218	200	County	yes	B	BN
Mid Fife and Glenrothes	54,098	150	County		U	U
Midlothian North	53,996	146	County		BN	U

Midlothian South, Tweeddale and Lauderdale	60,183	1,758	County		B	U
Moray	63,123	2,056	County		B	U
Motherwell and Wishaw	57,740	50	Burgh		U	U
Na h-Eileanan an Iar	21,769	3,270	County		U	U
Orkney Islands	17,696	1,087	County		U	U
Paisley	59,748	39	Burgh	yes	B	B
Perthshire North	59,944	3,978	County		B	U
Perthshire South and Kinross-shire	60,095	1,443	County		B	U
Renfrewshire West	60,707	218	County	yes	BN	B
Rutherglen and Cambuslang	62,888	33	Burgh	yes	BN	BN
Shetland Islands	17,965	1,657	County		U	U
Skye, Lochaber and Badenoch	67,222	12,588	County	yes	B	B
Stirling	54,302	2,158	County		B	U
Strathkelvin and Bearsden	63,895	144	County		U	U
Uddingston and Bellshill	58,839	52	Burgh	yes	B	B

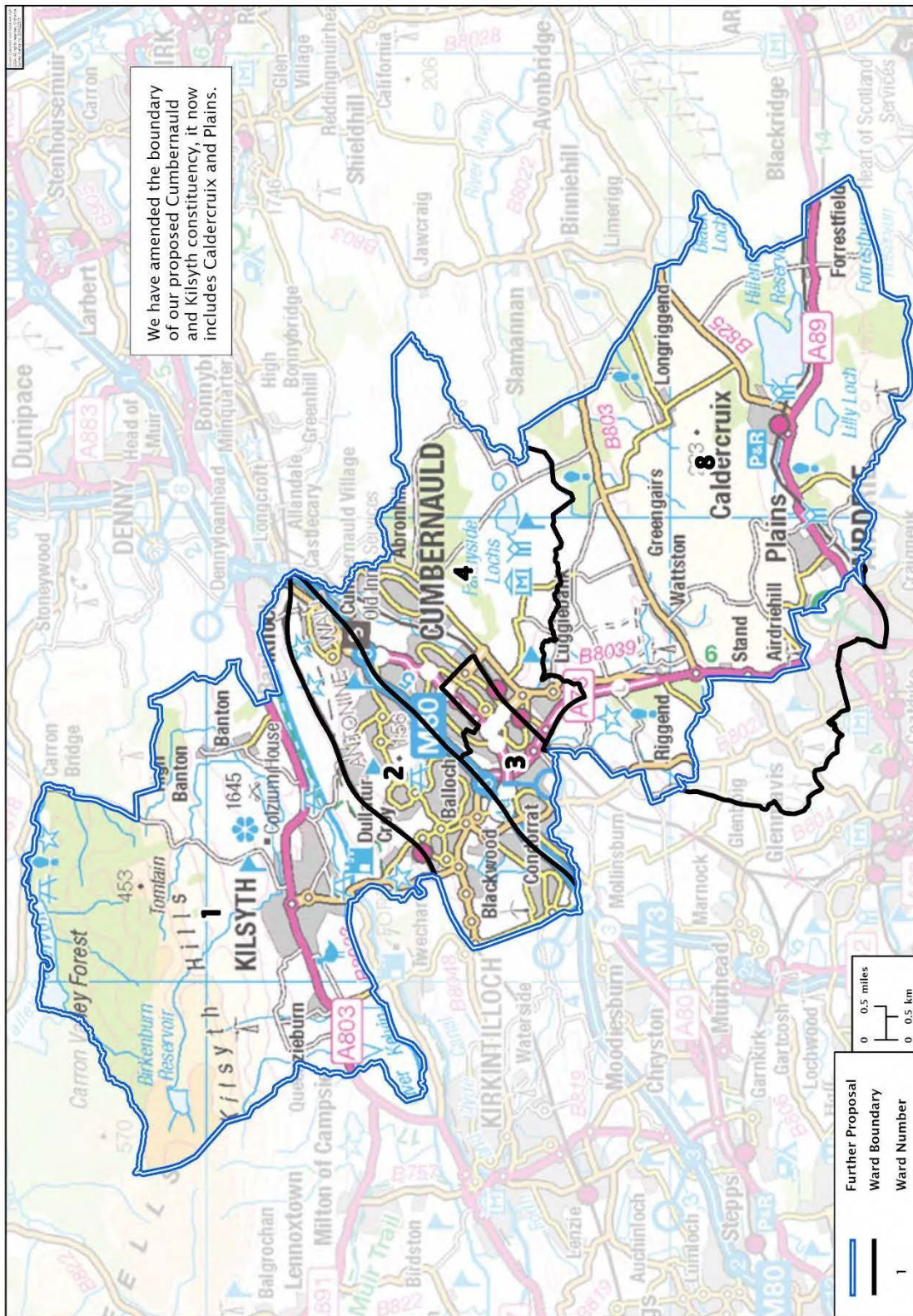
B – boundary changed from existing constituency. Name unchanged.

BN – new constituency boundary and new constituency name.

N – name changed. Boundary unchanged from existing constituency.

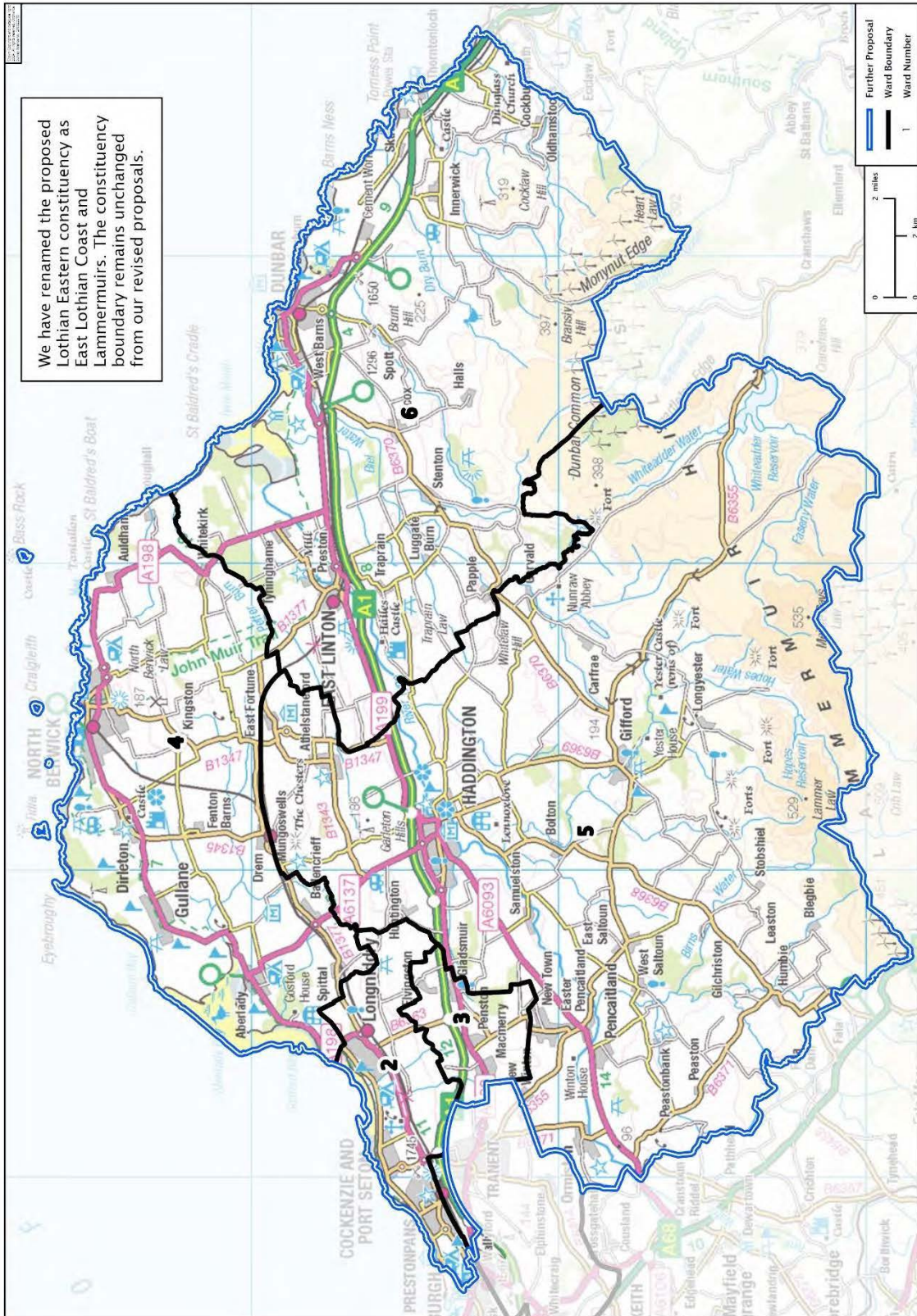
U – unchanged.

Cumbernauld and Kilsyth 57,040

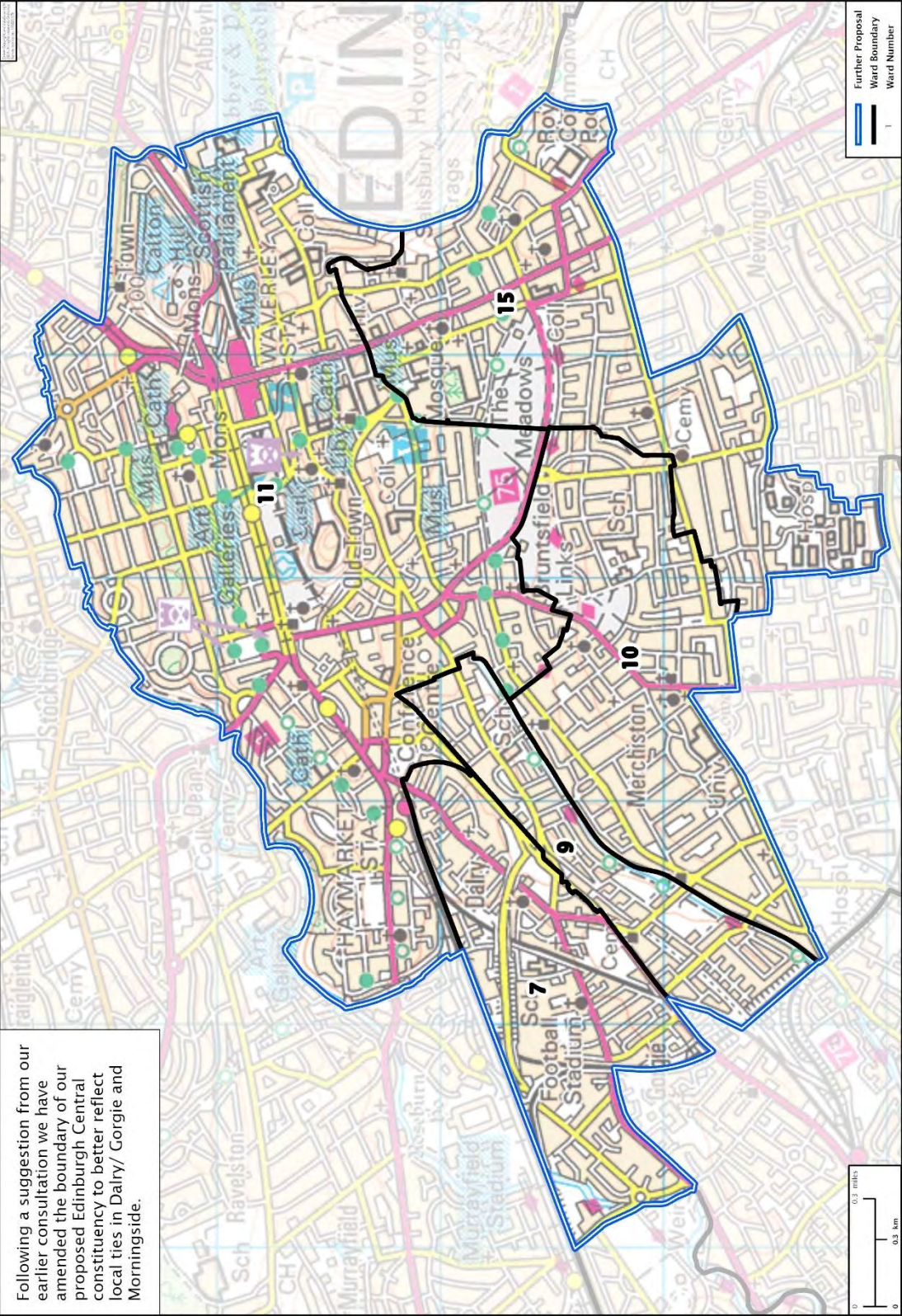


East Lothian Coast and Lammermuirs 57,511

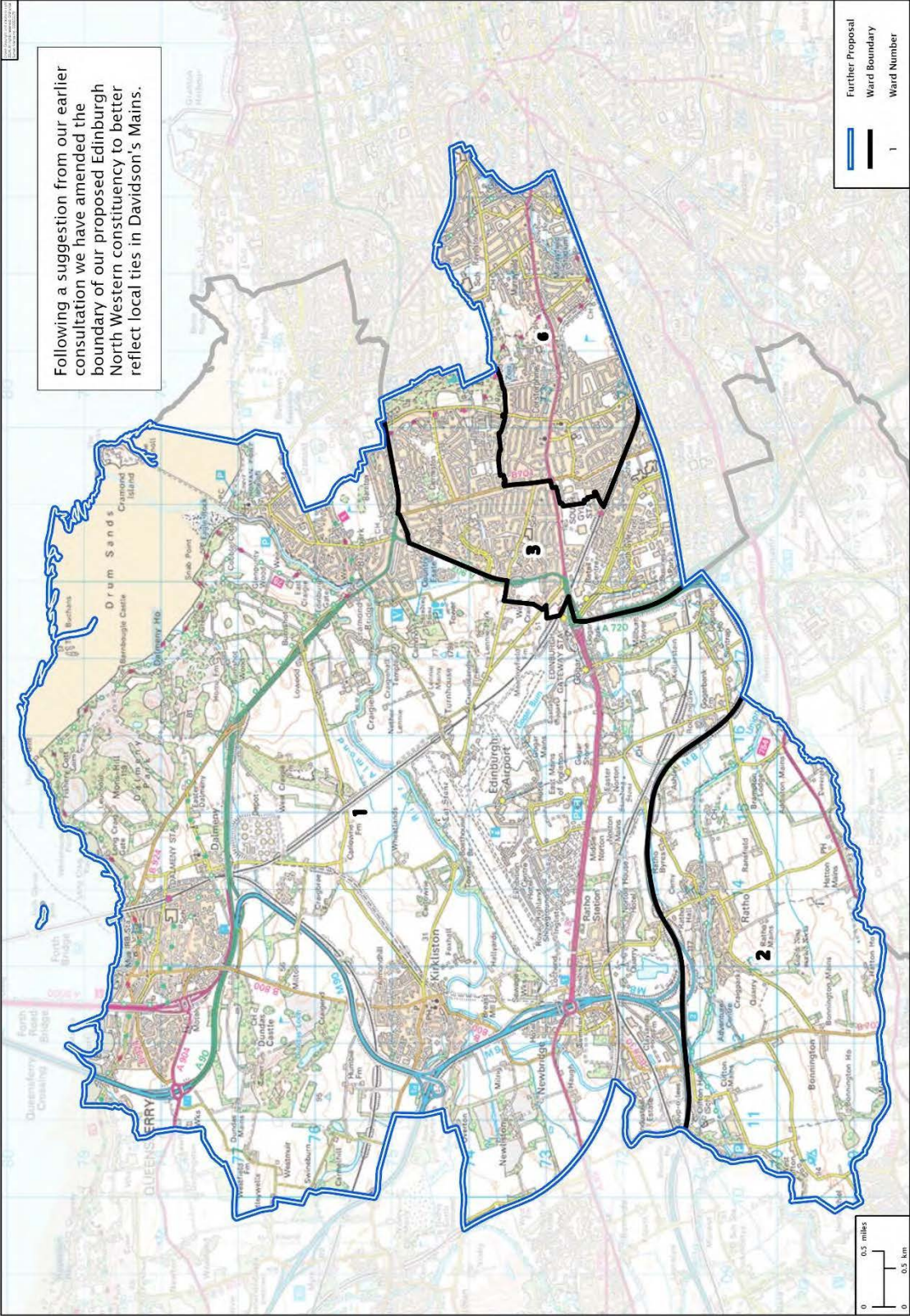
We have renamed the proposed Lothian Eastern constituency as East Lothian Coast and Lammermuirs. The constituency boundary remains unchanged from our revised proposals.



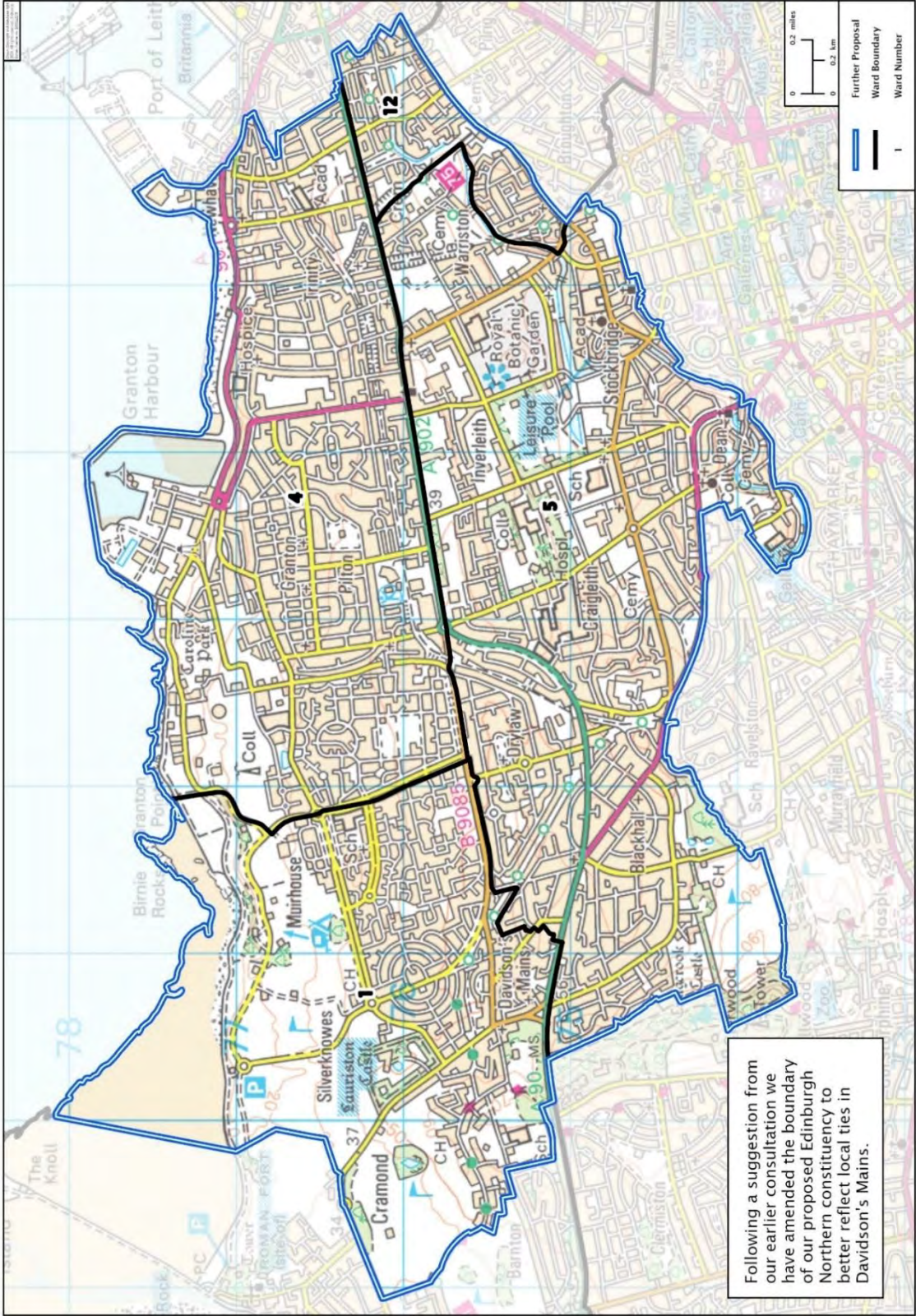
Edinburgh Central 64,114



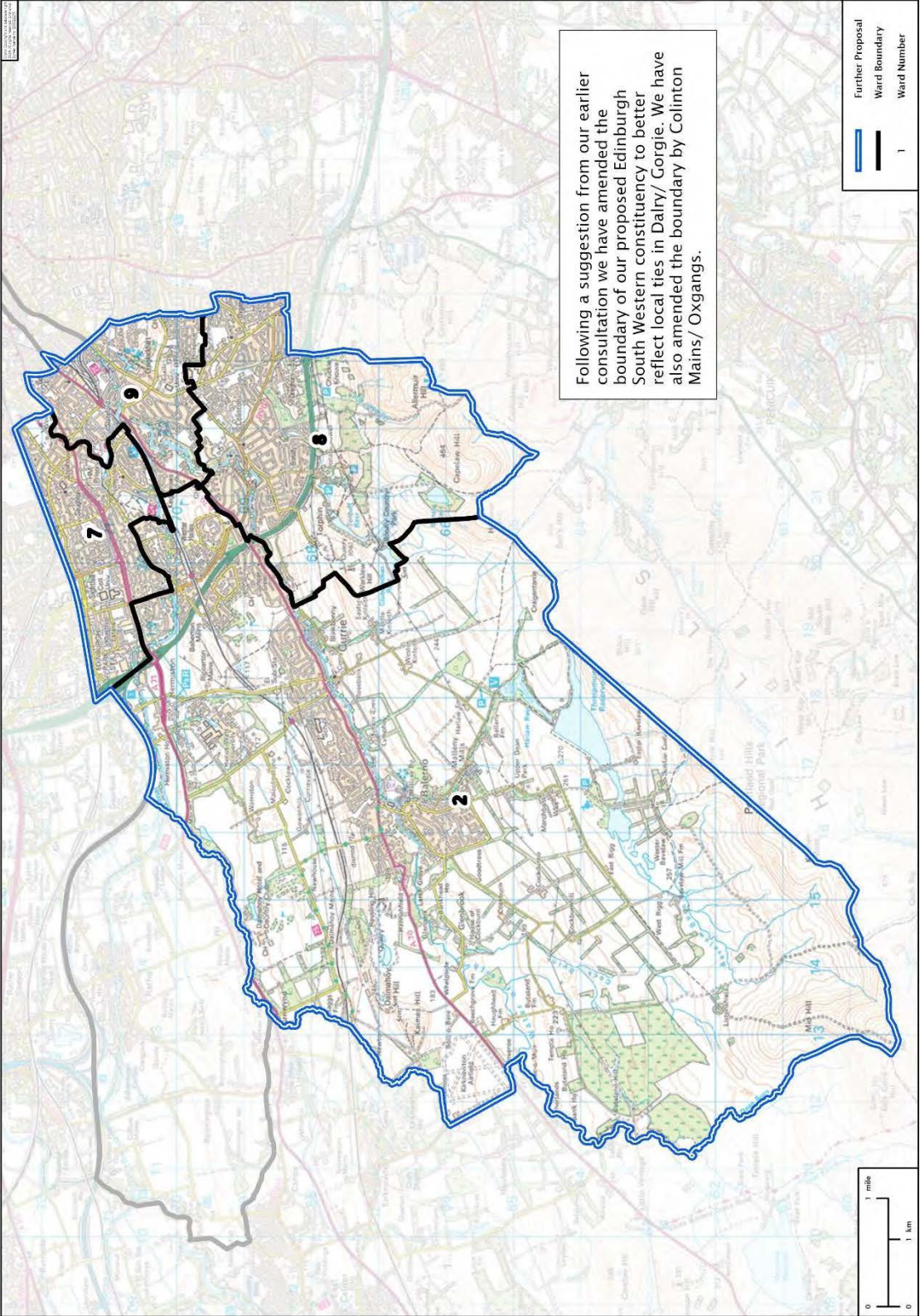
Edinburgh North Western 60,313



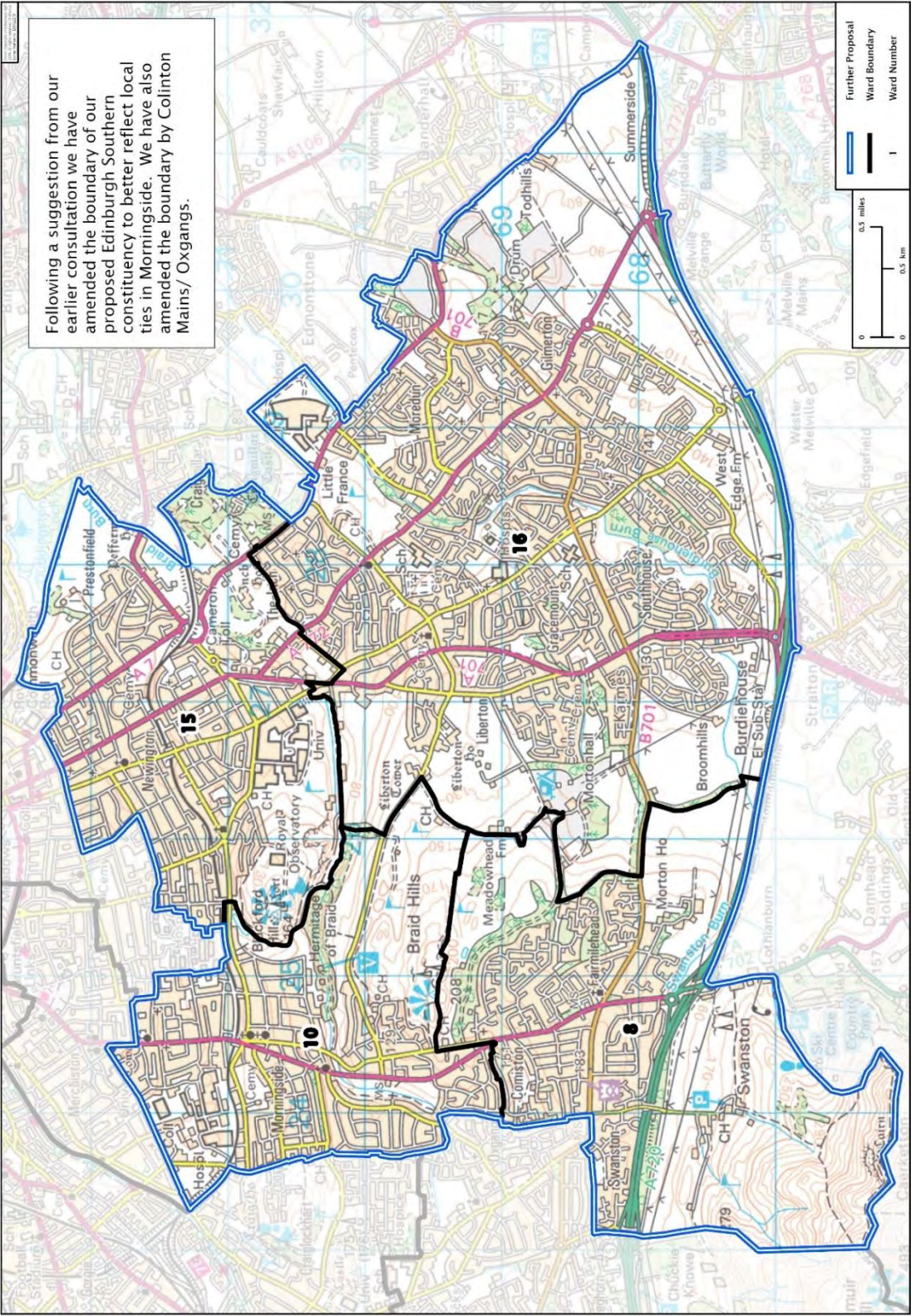
Edinburgh Northern
63,281



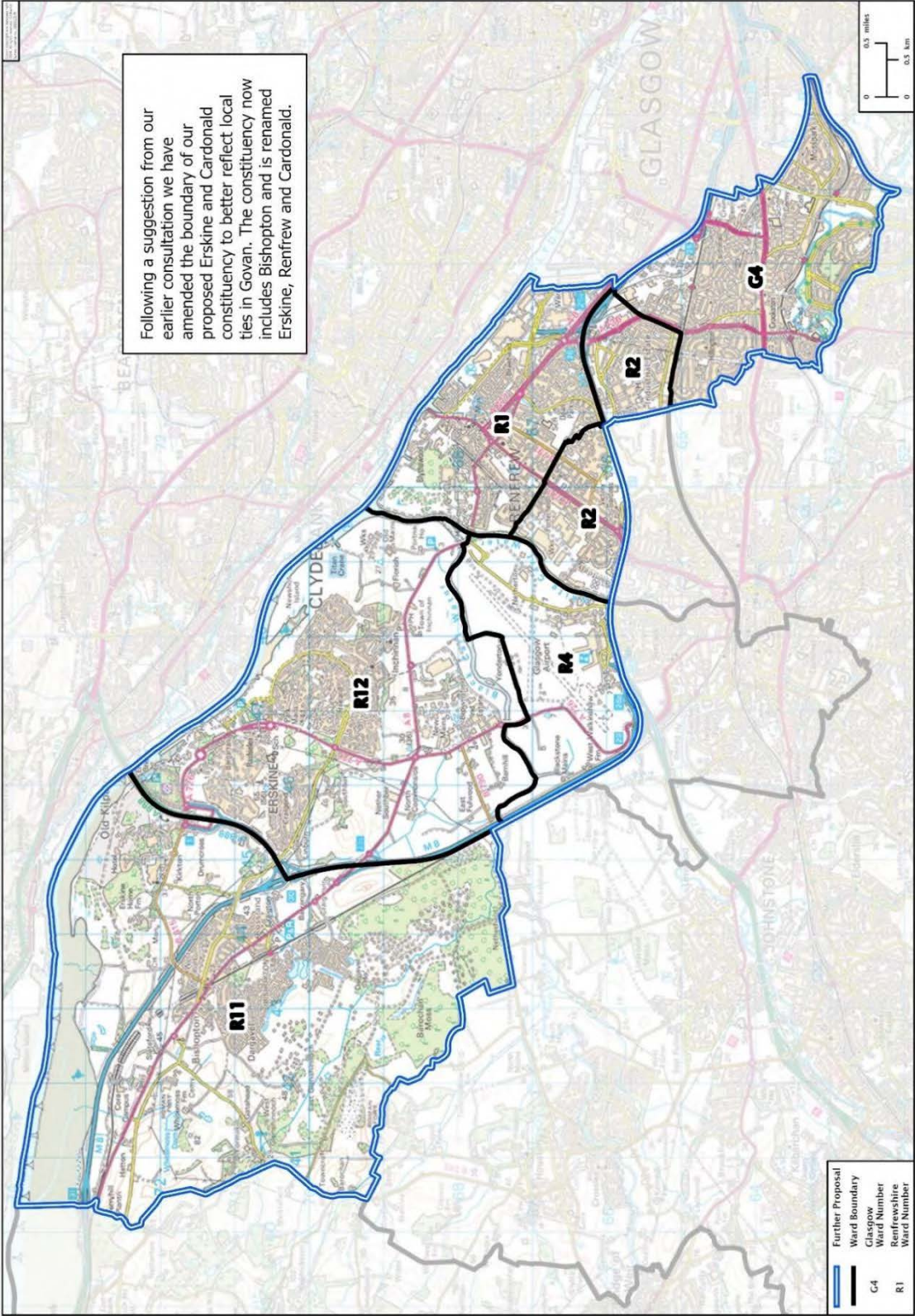
Edinburgh South Western 59,967



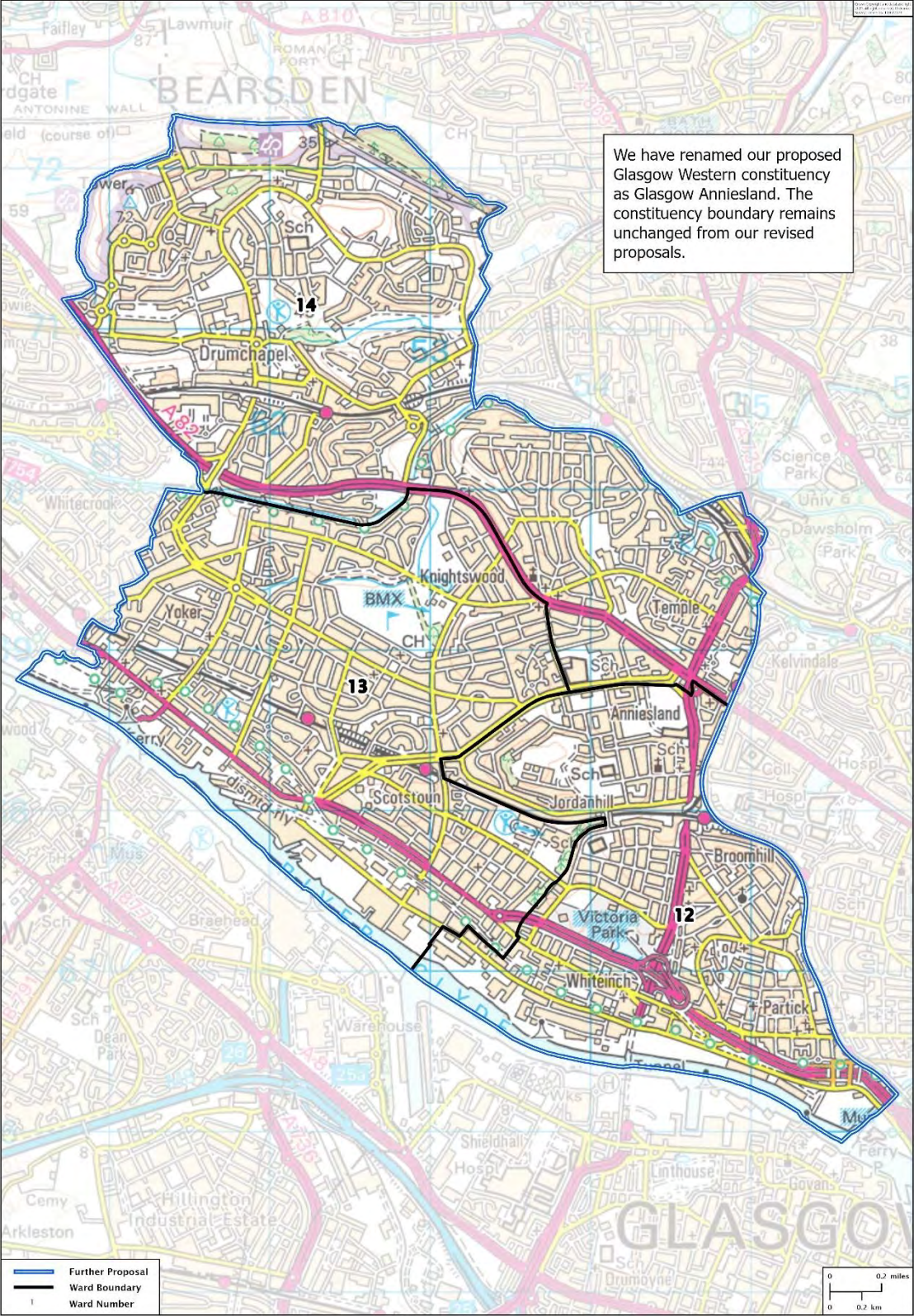
Edinburgh Southern 62,177



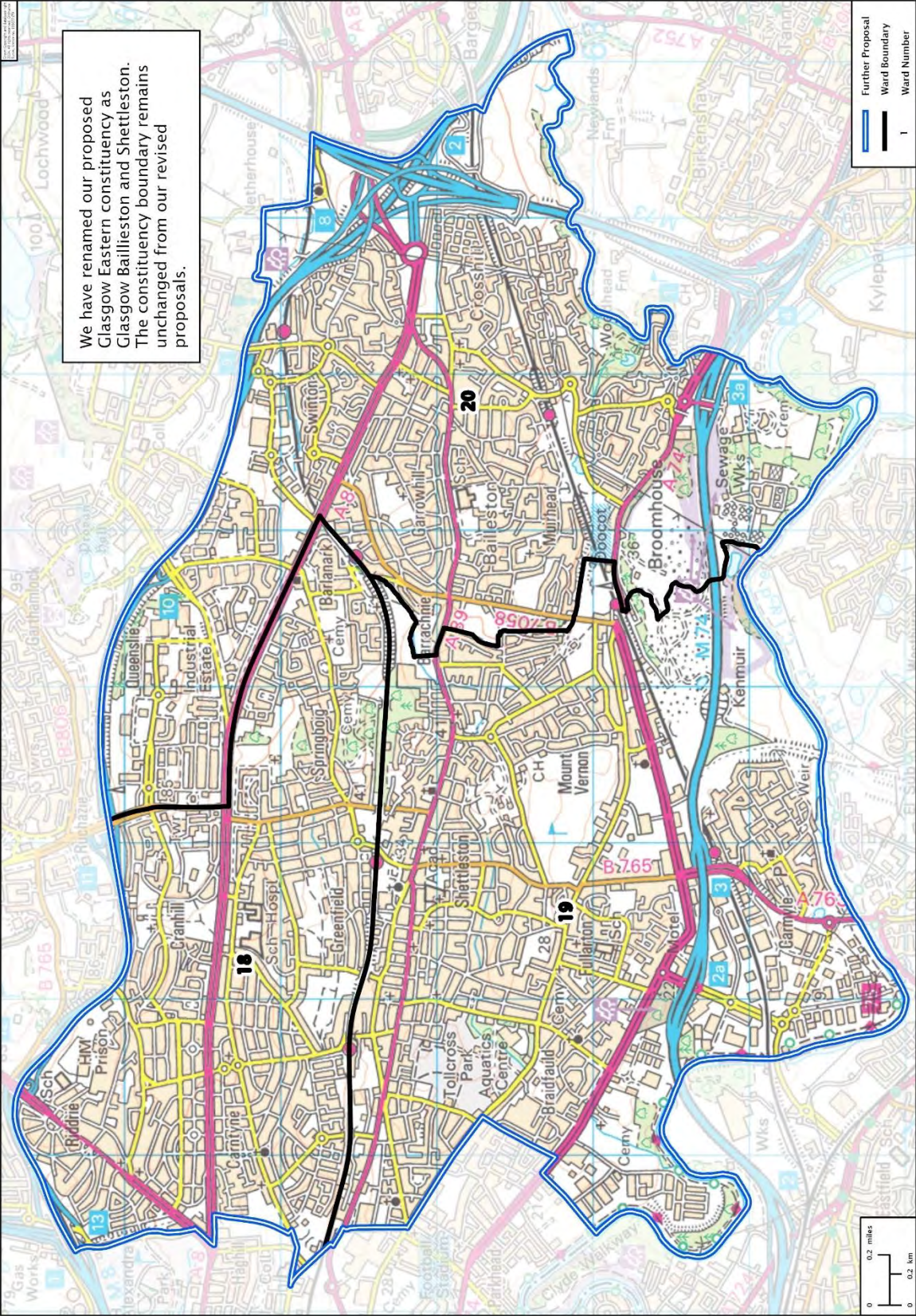
Erskine, Renfrew and Cardonald
62,842



Glasgow Anniesland 60,545

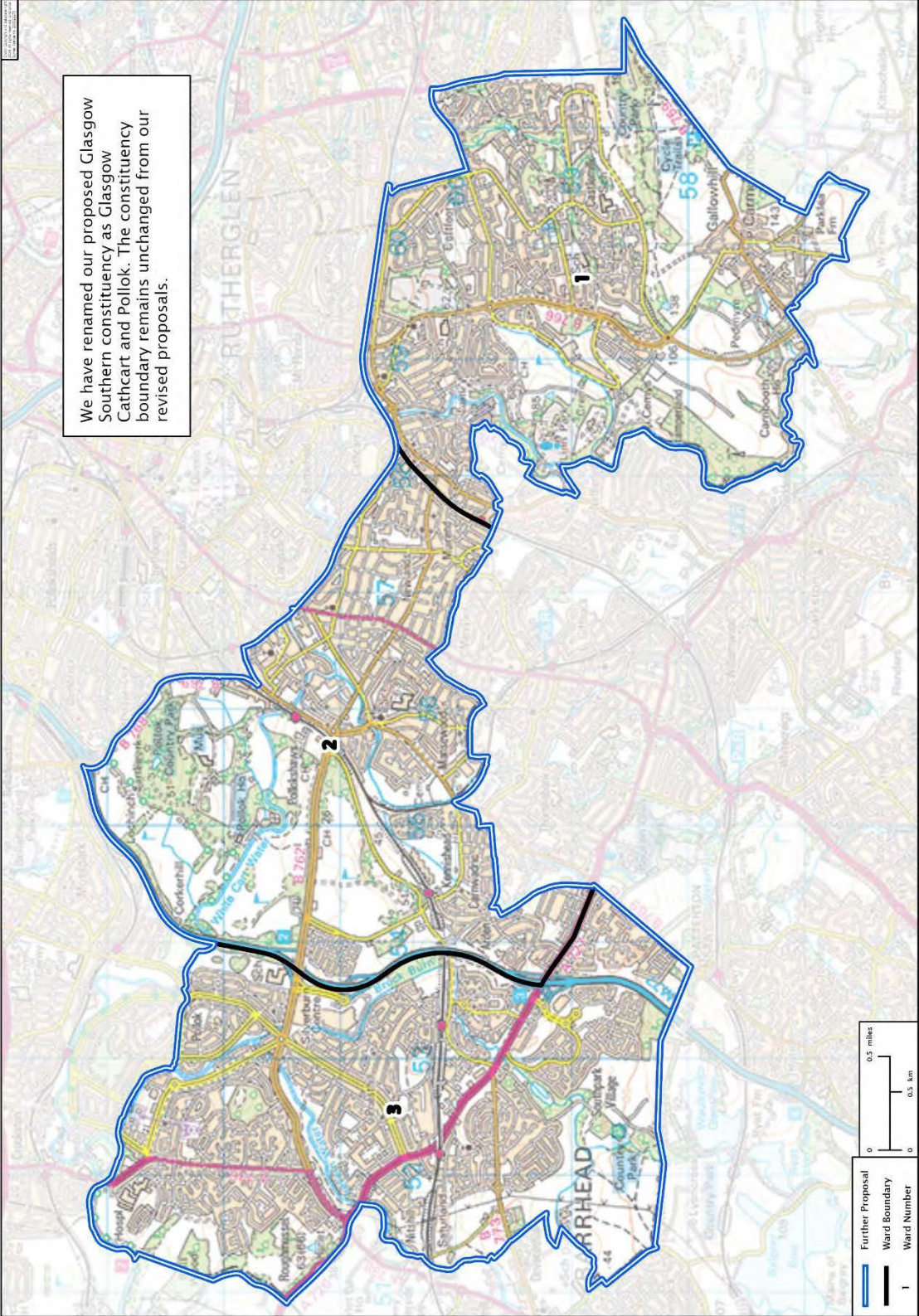


Glasgow Ballieston and Shettleston 58,936

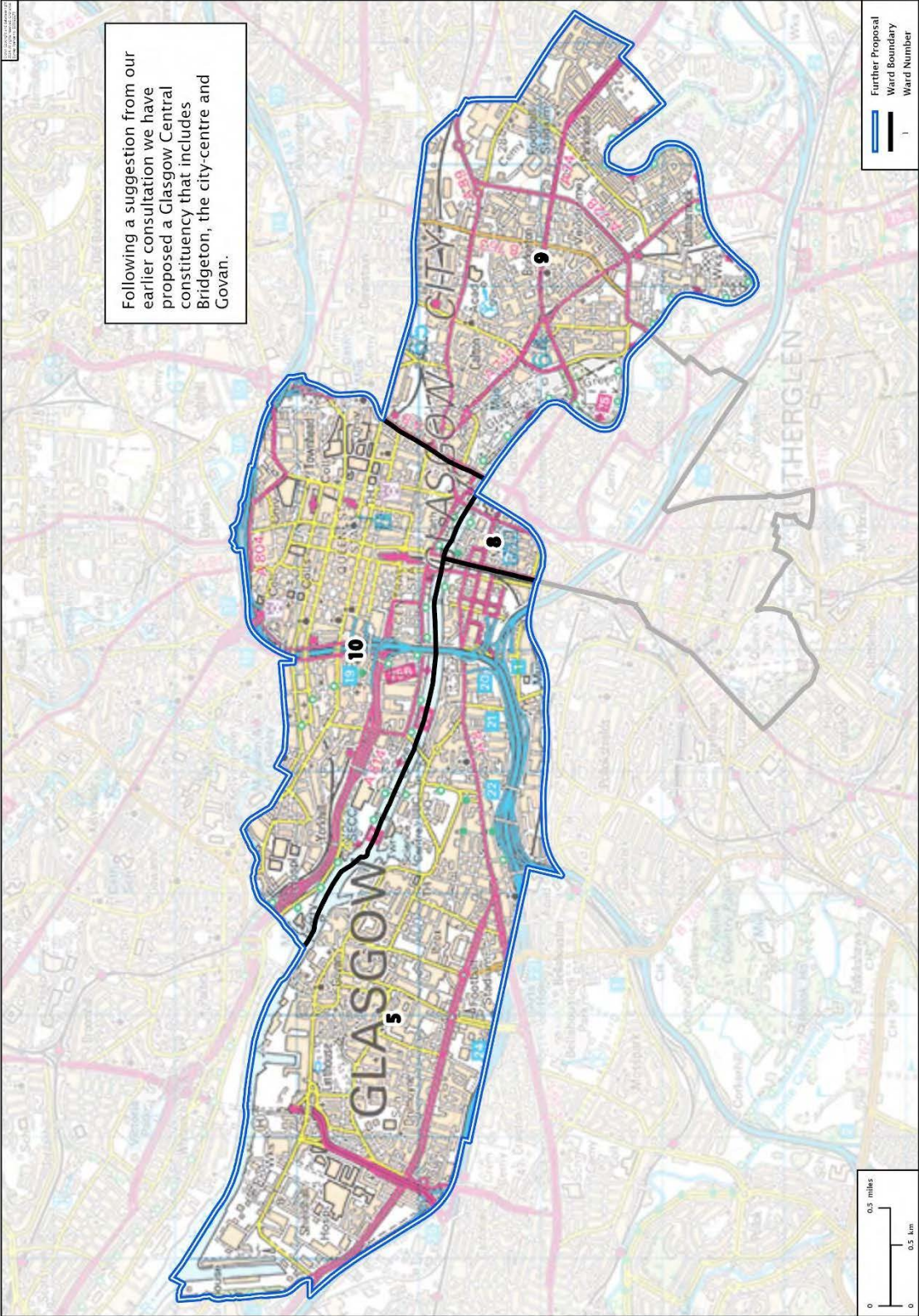


Glasgow Cathcart and Pollok 66,213

We have renamed our proposed Glasgow Southern constituency as Glasgow Cathcart and Pollok. The constituency boundary remains unchanged from our revised proposals.

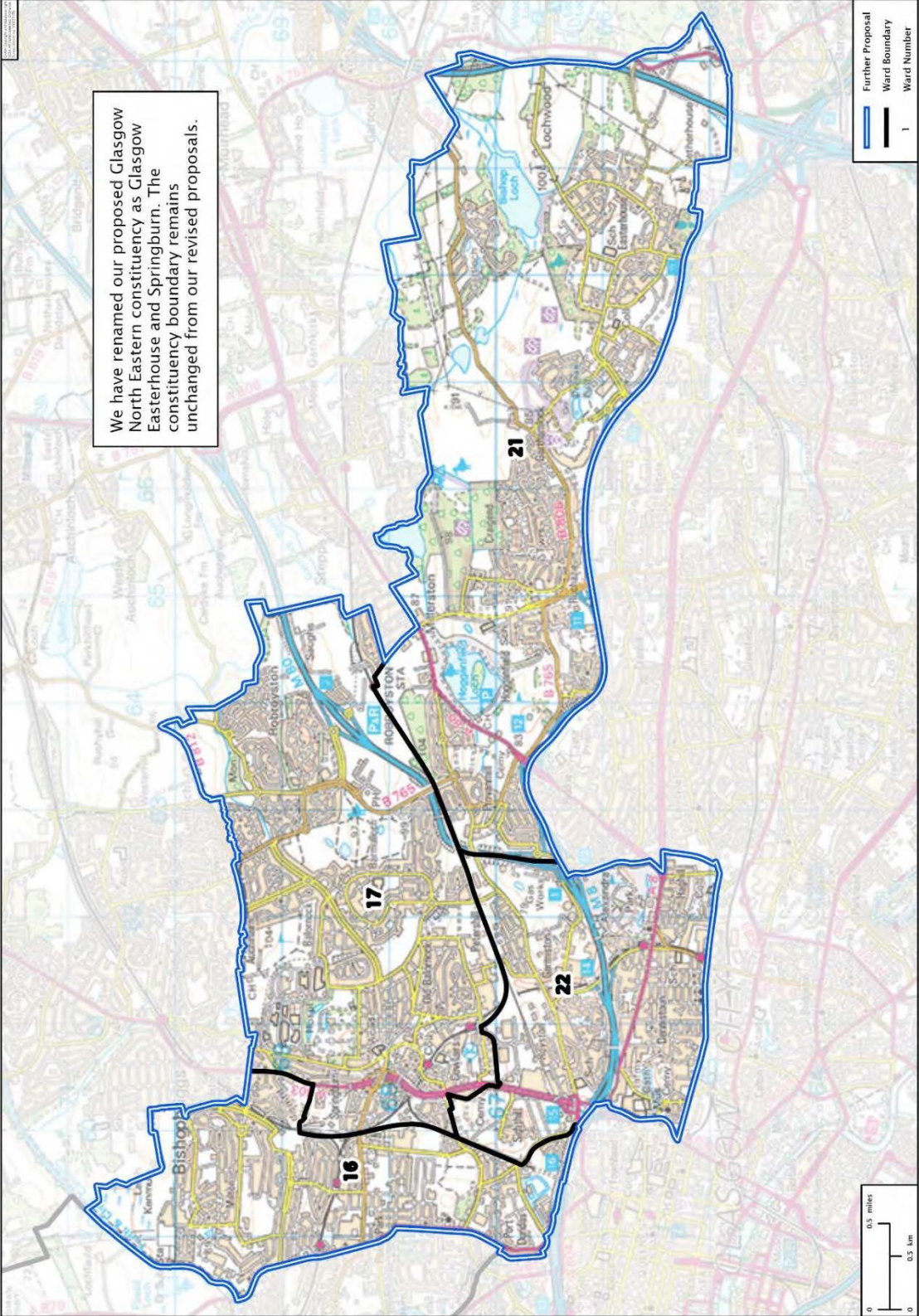


Glasgow Central 61,723

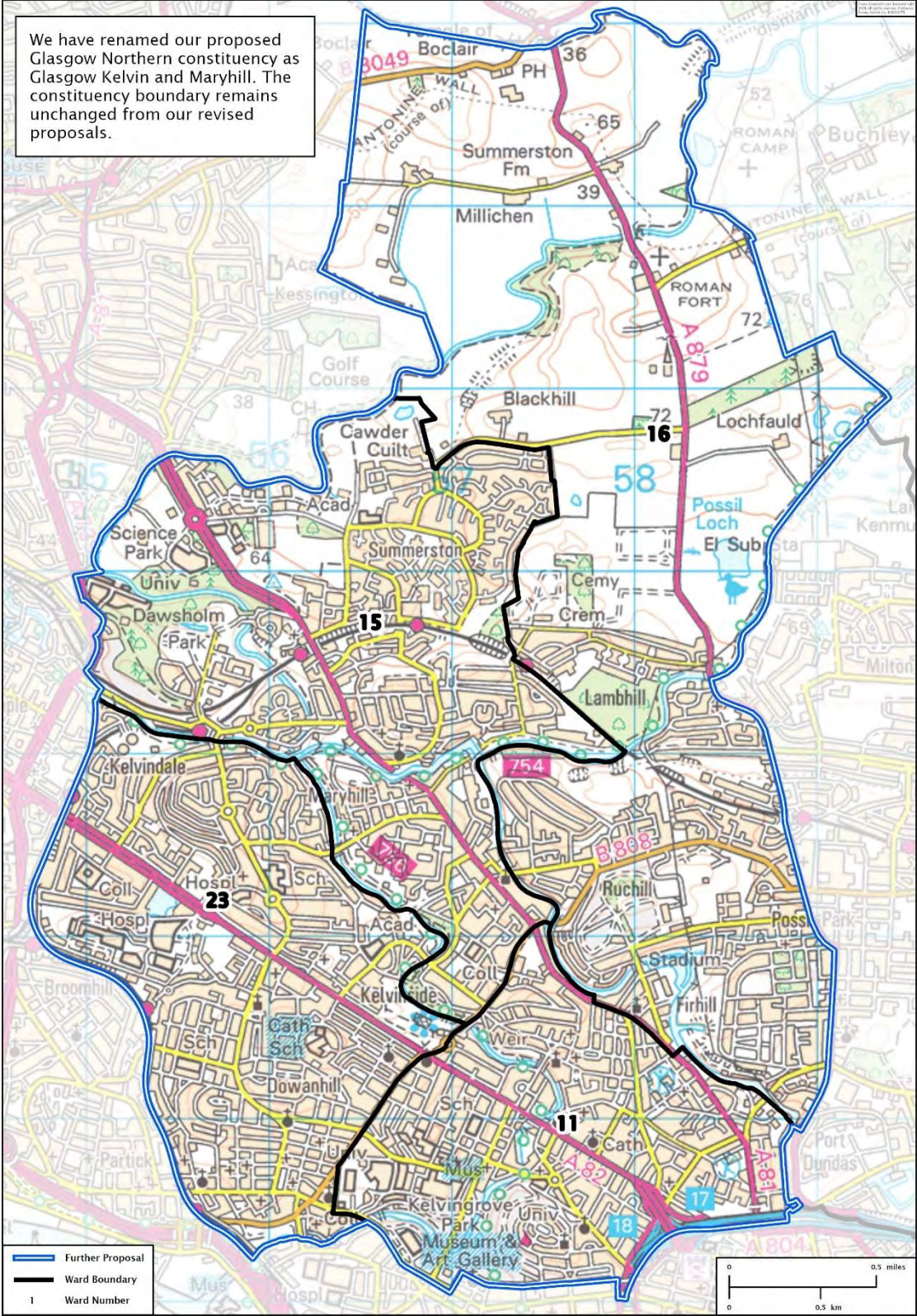


Glasgow Easterhouse and Springburn 59,829

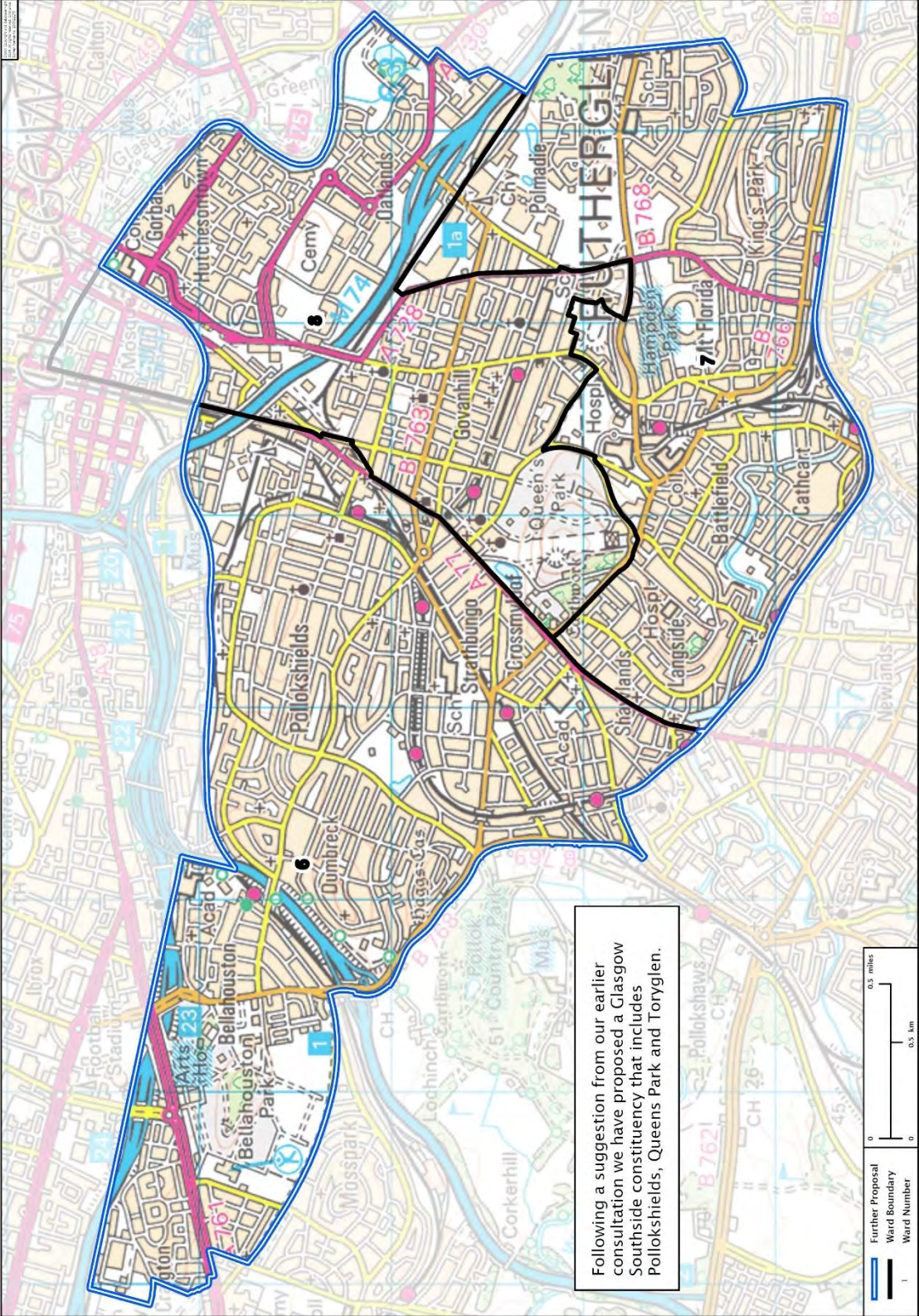
We have renamed our proposed Glasgow North Eastern constituency as Glasgow Easterhouse and Springburn. The constituency boundary remains unchanged from our revised proposals.



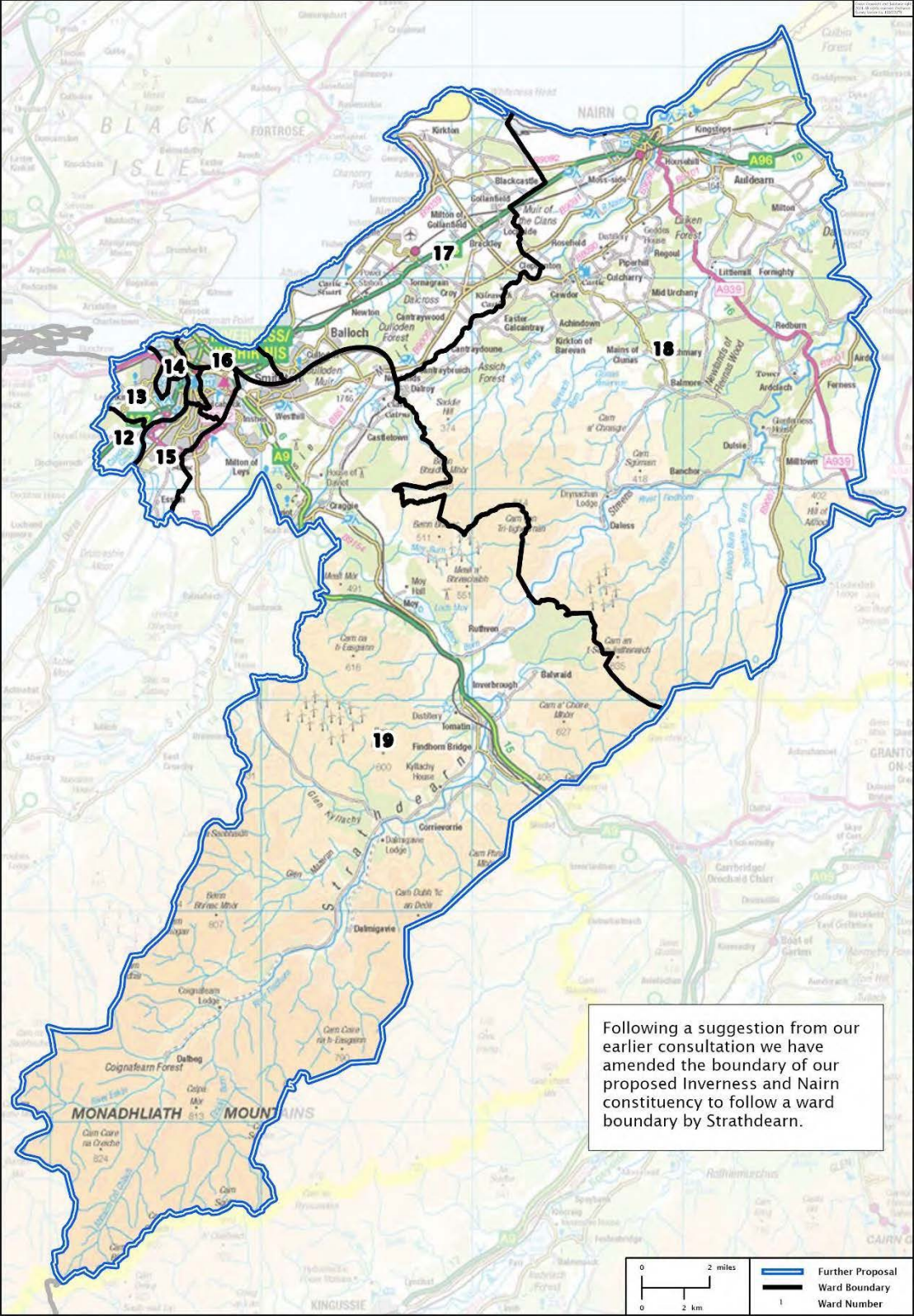
Glasgow Kelvin and Maryhill 64,836



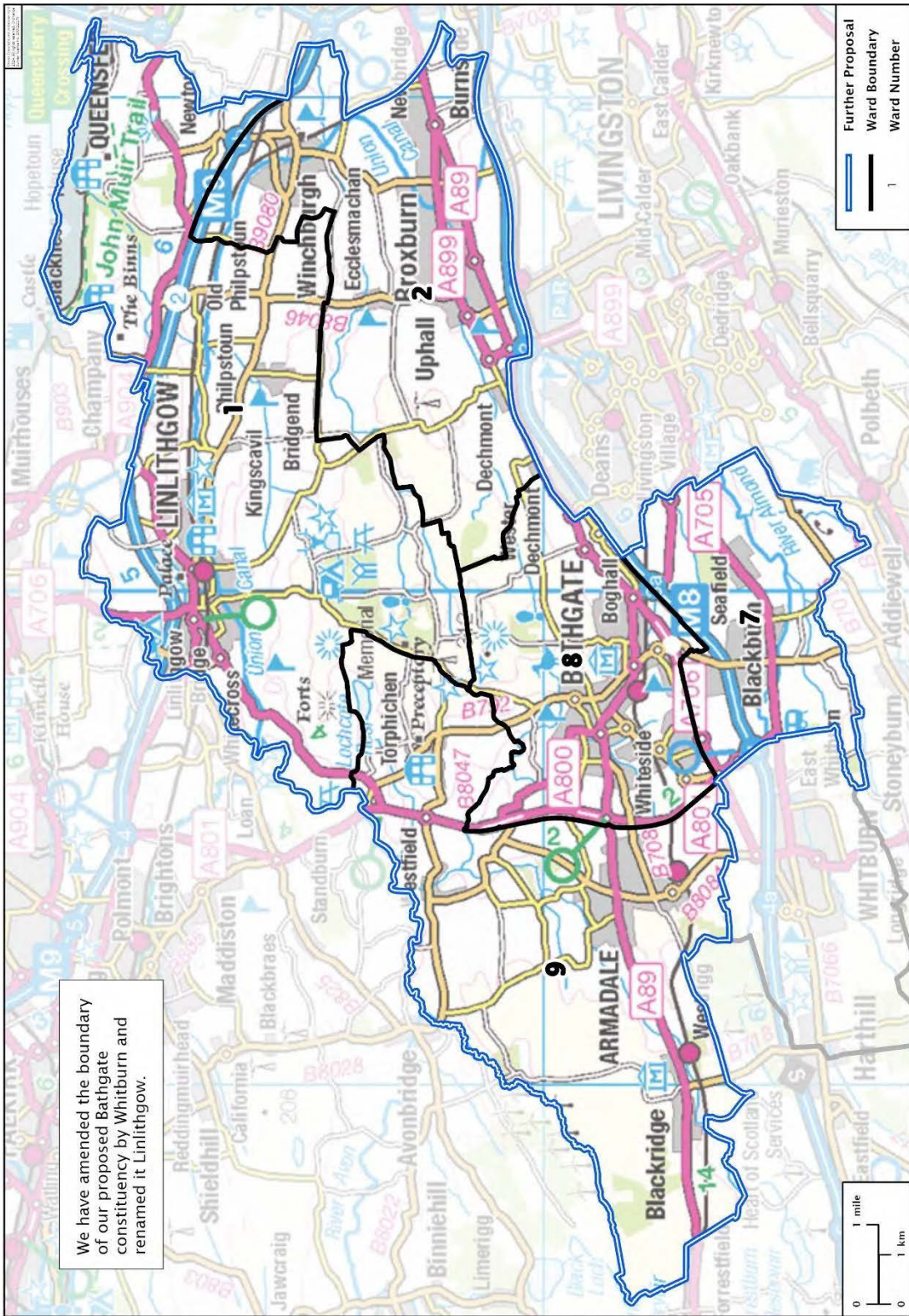
Glasgow Southside
65,486



Inverness and Nairn
65,464

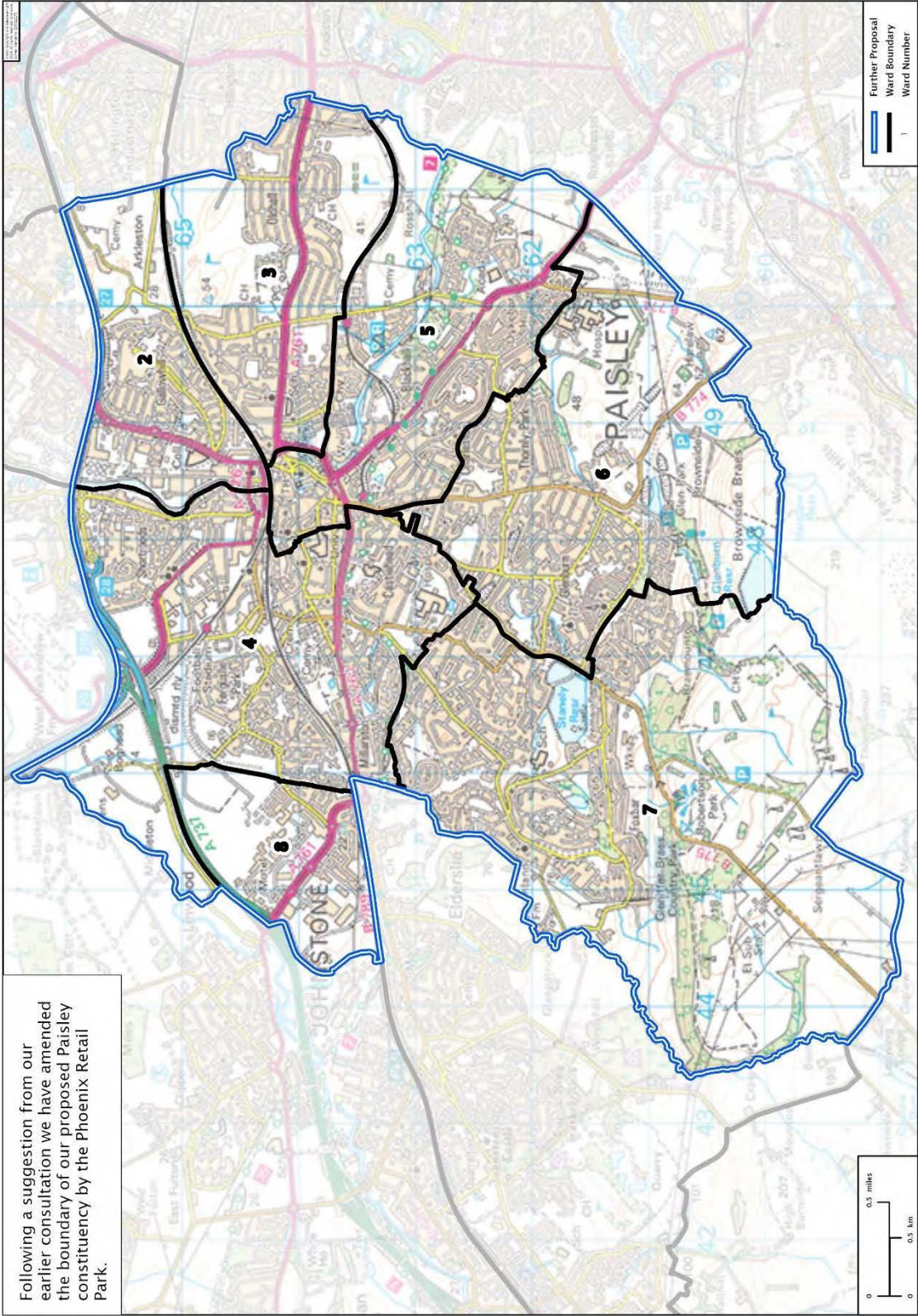


Linlithgow 66,218



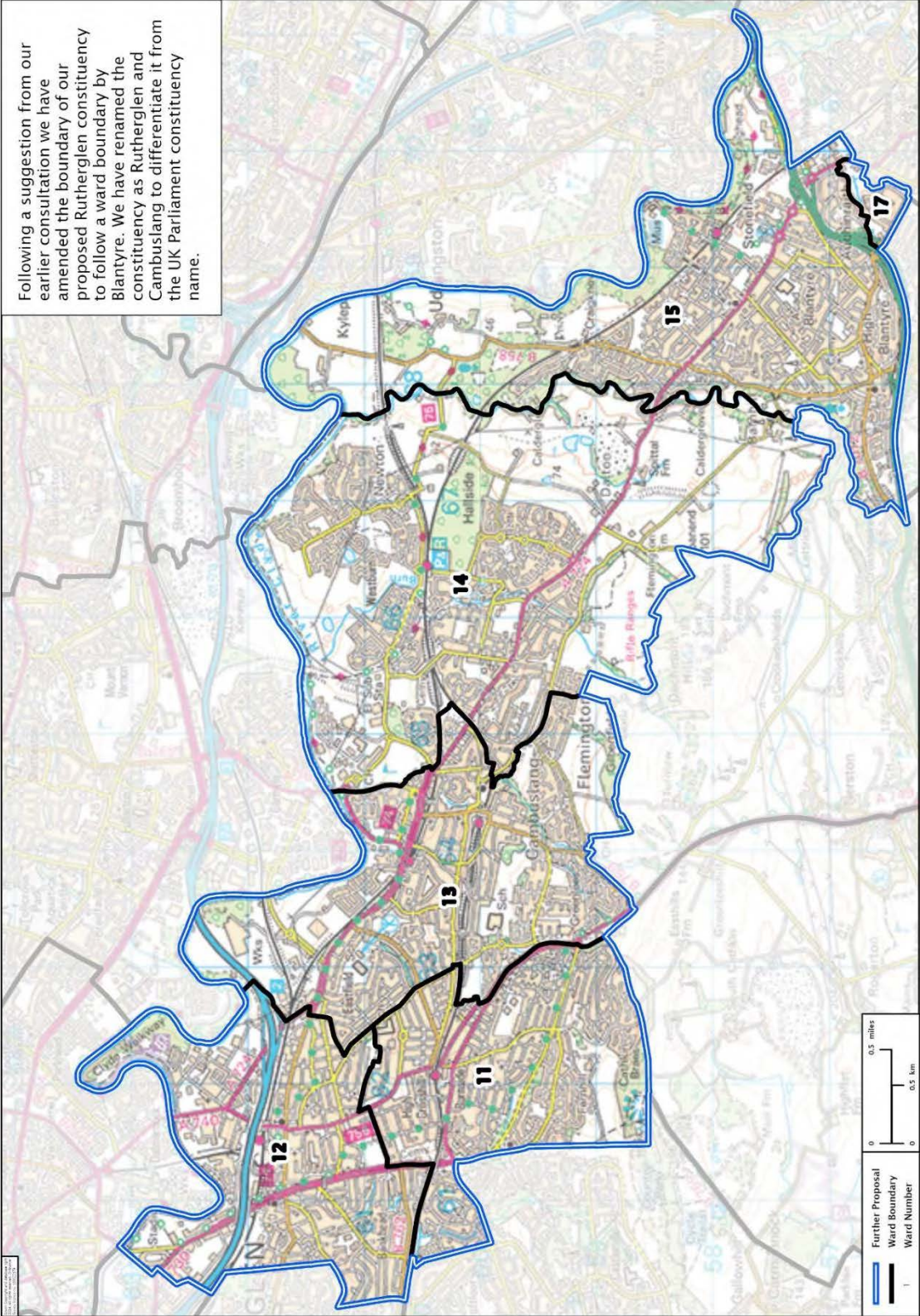
We have amended the boundary of our proposed Bathgate constituency by Whitburn and renamed it Linlithgow.

Paisley 59,748

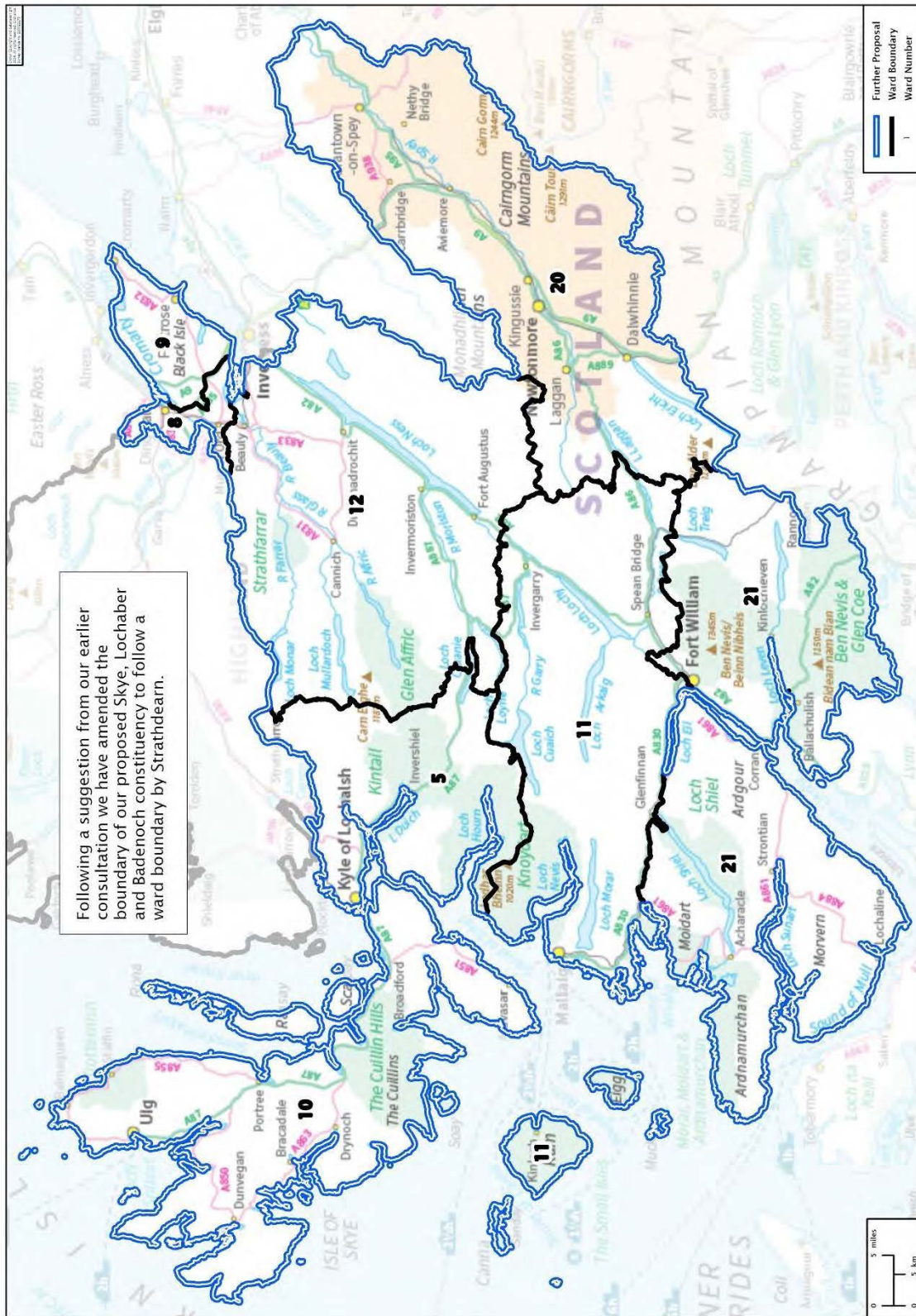


Rutherglen and Cambuslang 62,888

Following a suggestion from our earlier consultation we have amended the boundary of our proposed Rutherglen constituency to follow a ward boundary by Blantyre. We have renamed the constituency as Rutherglen and Cambuslang to differentiate it from the UK Parliament constituency name.

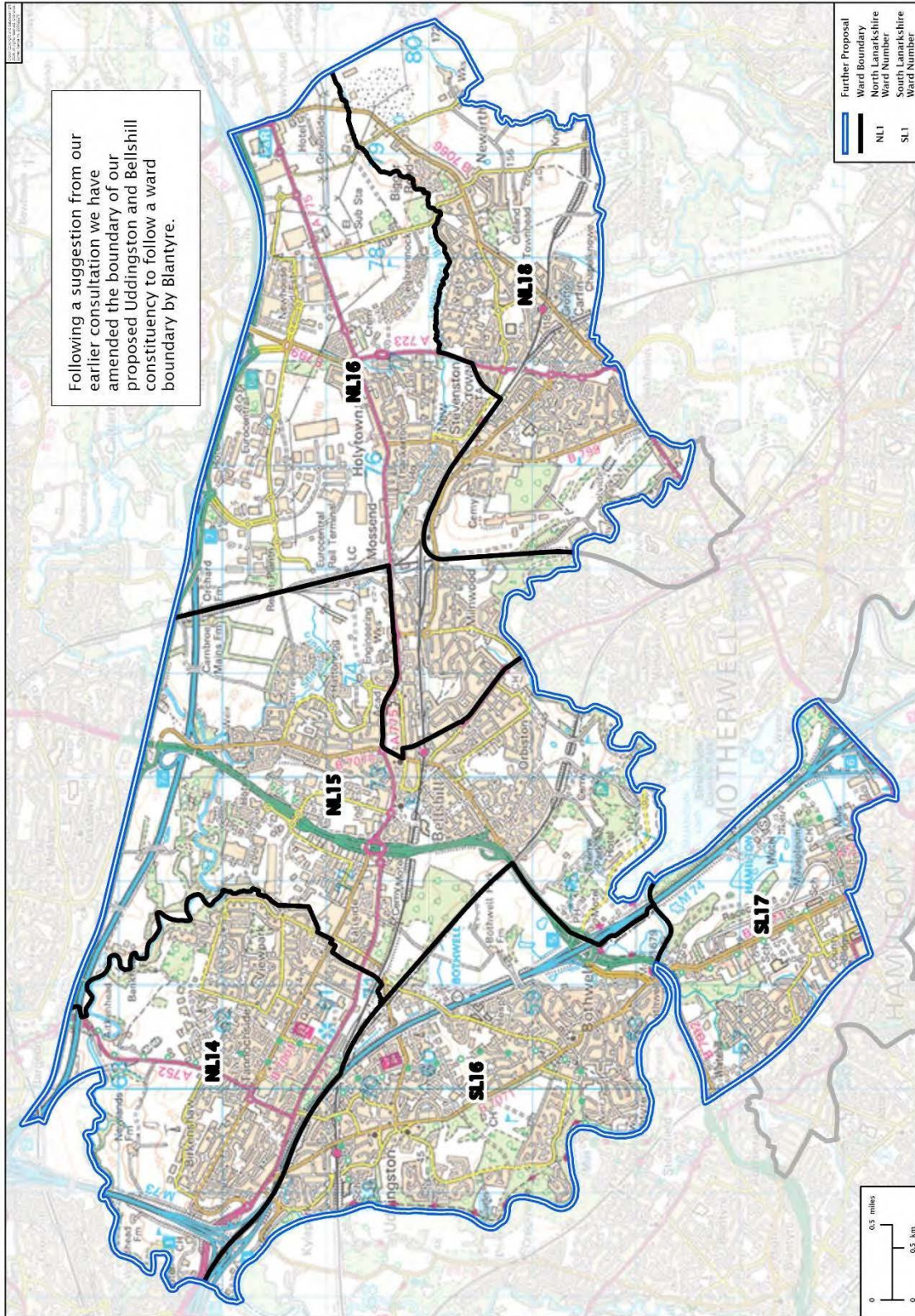


Skye, Lochaber and Badenoch 67,222



Following a suggestion from our earlier consultation we have amended the boundary of our proposed Skye, Lochaber and Badenoch constituency to follow a ward boundary by Strathdearn.

Uddingston and Bellshill 58,839



Boundaries Scotland

Thistle House, 91 Haymarket Terrace, Edinburgh EH12 5HD

www.boundaries.scot

Telephone: 0131 244 2001

Email: boundaries.scot@scottishboundaries.gov.uk

Consultation site: consult.boundaries.scot