

# Fourth Statutory Review of Electoral Arrangements

## City of Edinburgh Council Area





Local Government Boundary Commission for Scotland

# Fourth Statutory Review of Electoral Arrangements

## City of Edinburgh Council Area

### Constitution of the Commission

Chairman: Mr John L Marjoribanks  
Deputy Chairman: Mr Brian Wilson OBE

Commissioners: Professor Hugh M Begg  
Dr A Glen  
Mr K McDonald  
Mr R Millham

Report Number E06012  
July 2006



<b>Contents</b>	<b>Page</b>
<b>Summary</b>	<b>Page 7</b>
<b>Part 1 Background</b>	<b>Pages 9 – 14 Paragraphs</b>
Origin of the Review	1
The Local Governance (Scotland) Act 2004	2 – 4
Commencement of the 2004 Act	5
Directions from Scottish Ministers	6 – 9
Announcement of our Review	10 – 16
General Issues	17 – 18
Definition of Electoral Ward Boundaries	19 – 24
Electorate Data used in the Review	25 – 26
<b>Part 2 The Review in City of Edinburgh Council Area</b>	<b>Pages 15 –30 Paragraphs</b>
Meeting with The City of Edinburgh Council	1 – 3
Concluded View of the Council	4
Aggregation of Existing Wards	5 – 8
Initial Proposals	9 – 11
Informing the Council of our Initial Proposals	12 – 13
The City of Edinburgh Council Response	14 – 15
Consideration of the Council Response to the Initial Proposals	16
Provisional Proposals	17 – 21
Representations	22
Consideration of Representations	23 – 50
<b>Part 3 Final Recommendation</b>	<b>Pages 31 – 32</b>
<b>Appendices</b>	<b>Pages 33 – 60</b>
Appendix A Extract from Local Governance (Scotland) Act 2004	34 – 35
Appendix B Directions to the Commission	36 – 38
Appendix C Directions to Councils	39
Appendix D Schedule 6 Rules	40
Appendix E Review Timetable	41 – 42
Appendix F Illustrative Maps	43 – 60



Local Government Boundary Commission for Scotland

Mr Tom McCabe MSP  
Minister for Finance and Public Service Reform

We, the Local Government Boundary Commission for Scotland, present our proposals for future electoral arrangements for the City of Edinburgh Council area resulting from our review of local government electoral arrangements as required by section 4 (1) of the Local Governance (Scotland) Act 2004.

In accordance with the provisions of section 18(3) of the Local Government (Scotland) Act 1973, as amended, copies of our report, together with illustrative maps, are being sent to The City of Edinburgh Council with a request that the report and maps are made available for public inspection at their offices. In addition copies of our report and maps in the form of PDF images on CDROM are being sent to those who received a copy of our consultation letter. Further, those who made representations during the 12-week public consultation exercise have been informed that the report has been published.

Notice is being given in newspapers circulating in the City of Edinburgh Council area that the report has been made and that interested parties may inspect the report and maps at offices designated by the Council throughout its area or by accessing these documents on our web site.



John L Marjoribanks  
Chairman  
for Local Government Boundary Commission for Scotland



Bob Smith  
Secretary  
Local Government Boundary Commission for Scotland  
3 Drumsheugh Gardens  
Edinburgh  
EH3 7QJ

[secretariat@lgbc-scotland.gov.uk](mailto:secretariat@lgbc-scotland.gov.uk)  
[www.lgbc-scotland.gov.uk](http://www.lgbc-scotland.gov.uk)



July 2006



## Summary

- The review was called for by section 4 of the Local Governance (Scotland) Act 2004.  
**Part 1, paragraph 1**
- The first Commencement Order, which signalled the start of the review process, was dated 20 August 2004.  
**Part 1, paragraph 5**
- Directions from the Scottish Ministers were issued to the Commission on 30 August 2004.  
**Part 1, paragraph 6**
- Our review of electoral arrangements was announced in a letter dated 6 September 2004 sent to each Chief Executive of the 32 Councils.  
**Part 1, paragraphs 10 – 16**
- The ward boundaries proposed by our review are based on topographical identifiers contained in the Ordnance Survey MasterMap large-scale digital plans.  
**Part 1, paragraphs 19 – 24**
- The July 2004 electoral register provided the base electorate for the review.  
**Part 1, paragraphs 25 – 26**
- Our first meeting with The City of Edinburgh Council took place on 5 October 2004 at the Council headquarters in Edinburgh.  
**Part 2, paragraphs 1 – 3**
- The concluded view of the Council following our first meeting was received by us on 1 November 2004.  
**Part 2, paragraph 4**
- We provided the Council with our initial proposals for 17 wards in the City of Edinburgh Council area on 7 March 2005 and asked that a response be made within 2 months.  
**Part 2, paragraphs 12 – 13**
- The City of Edinburgh Council response to our initial proposals was received on 12 May 2005.  
**Part 2, paragraphs 14 – 15**
- We published our provisional proposals for 17 wards electing 58 Councillors on 2 June 2005 and asked that representations be made to us by 25 August 2005.  
**Part 2, paragraphs 17 – 21**
- We received 634 representations during the statutory consultation period of 12 weeks.  
**Part 2, paragraph 22**
- Our consideration of representations.  
**Part 2, paragraphs 23 – 50**
- We recommend 10 x three member wards and 7 x four member wards for the City of Edinburgh Council area thereby returning a total of 58 elected members.  
**Part 3, paragraph 1**



## Part 1 Background

### Origin of the Review

1. The Local Governance (Scotland) Act 2004 introduced proportional representation for local authority elections. As a consequence, we were required to review electoral arrangements for all local authorities in Scotland for the elections due to take place in May 2007. This Report presents our findings and recommendations resulting from the review of the City of Edinburgh Council area called for by section 4(1) of the 2004 Act.

### The Local Governance (Scotland) Act 2004

2. The 2004 Act made a number of changes to the existing legislation, the Local Government (Scotland) Act 1973, as amended. These changes are set out at Appendix A. However, some of the changes have a particular impact on the review process and it is perhaps worth noting the following provisions:

- at least 2 months before taking any steps to inform other persons of our draft proposals, or any interim decision not to make proposals, we should inform the Council of our proposals (or any decision not to make proposals); and
- before informing any other person of our initial draft proposals, we should take into consideration any representation made by the Council during the period of 2 months beginning on the day on which the Council was informed of our initial draft proposal.

3. Schedule 6 to the 1973 Act, as amended, was further amended by the 2004 Act so that:

- at 1(2), the number calculated by dividing the number of local government electors in each electoral ward of a local government area by the number of councillors to be returned in that ward shall be, as nearly as may be, the same; and
- at 1(3)(b), any local ties which would be broken by the fixing of any particular boundary but if, in any case, there is a conflict between those criteria, greater weight shall be given to the latter.

4. The full text of the Schedule 6 rules as amended is set out at Appendix D.

### Commencement of the 2004 Act

5. The Minister for Finance and Public Services signed the first Commencement Order in relation to the Local Governance (Scotland) Act 2004 on 19 August 2004. As a consequence, Sections 4(1) to (4), 5(a) to (c) and (f) (Reviews of electoral arrangements) and Section 6 (Interpretation of Part 1) of the 2004 Act came into force on 20 August 2004. The Commencement Order also stated that, in exercising the functions conferred under the provisions referred to above, Scottish Ministers and the Commission should act on the assumption that the provisions of Part 1 of the 2004 Act are in force for all purposes.

## Directions from Scottish Ministers

6. On 30 August 2004, Scottish Ministers issued Directions to us in exercise of the powers conferred by Section 18(2A) and 18(2B) of the Local Government (Scotland) Act 1973, as amended. The Directions apply during the current review to any consultation conducted by us in accordance with Section 18(2)(a) of the 1973 Act, with the Council of any local government area affected by a review under Part II of that Act. A copy of these Directions is at Appendix B.

7. Amongst other things, the Directions required us to inform each Council, within 14 days of the date of the Directions, in writing, in a letter sent by recorded delivery addressed to the Chief Executive, of the:

- timetable we proposed for the consultation;
- timetable we proposed for the review;
- general approach we proposed to adopt in formulating proposals for ward boundaries;
- information we would like to have available to use in formulating our proposals;
- assistance which each Council would be asked to render to us in the process of review; and
- such other matters we felt appropriate.

8. On 30 August 2004, Scottish Ministers similarly issued Directions to Councils that they should cooperate with us in the conduct of our review and, in particular, that they should:

- establish and maintain an ongoing dialogue which, where appropriate, may include meetings with us;
- take all reasonable steps to ensure that any views expressed, or purporting to be expressed, by or on behalf of the Council to us are accurate;
- provide us with all such information as we may reasonably request; and
- provide us with all such information that the Council considered relevant, including any proposals or ideas a Council may have in relation to new ward boundaries, or otherwise in relation to the formulation of our proposals.

9. A copy of the Directions to Councils is set out at Appendix C.

## Announcement of our Review

10. We announced the start of our review of electoral arrangements in a letter to the Chief Executive of The City of Edinburgh Council dated 6 September 2004. With regard to our initial consultation, we informed the Chief Executive that paragraph 7 (subject to paragraph 9) of the Ministerial Directions to us mentioned above stipulated that we should meet with the Council no later than 12 weeks from the date of our letter. We were required to offer each Council two dates for such a meeting and that such a meeting should take place during the Council's ordinary working hours.

11. We proposed that our meeting with The City of Edinburgh Council should take place on either 15 September 2004 at 14:00 hrs or 22 September 2004 at 14:00 hrs. We asked the Council to inform us of any other dates within the 12-week period determined by the Directions which should be avoided in the event of our initial dates being unsuitable. We noted that we expected that meetings would be held at the Council's offices but offered, if necessary, to accommodate a meeting at our offices in Edinburgh.

12. With regard to the proposed meeting, we informed the Chief Executive that we would be represented by a Commissioner accompanied by a member or members of our Secretariat. We asked for facilities to be made available which would allow us to make a short presentation to provide background information and to illustrate how we proposed to undertake the review.

13. With our letter we enclosed an outline timetable (Appendix E) which set out the main stages for our review. We also set out details of the general approach which we intended to adopt in considering how revised electoral wards suitable for returning 3 or 4 elected members might be constructed within the terms of the statutory rules, whilst seeking better to reflect local perceptions of natural communities where possible and practicable to do so. We set out our proposal to use information from the July 2004 electoral register as the base electorate for our review and our intention to make available to the Council geographic information systems (GIS) data files containing counts of electors for each postcode within the Council area which would facilitate spatial analysis of these data.

14. Bearing in mind the importance we attached to perceptions of community focus and our concept of the contribution that this focus might make to the delineation of more stable boundaries in the longer term, we asked the Council to identify and map what it considered to be the boundaries between communities within its area. We made it clear that we were particularly interested in such boundaries being identified within contiguous built-up areas, such settlements, or groups of settlements, being likely to merit more than one multi-member ward. We also asked for information which would allow us to make a forecast of the electorate within the Council area at 2009, as required by the legislation.

15. We asked the Council to nominate an official as the recognised point of contact so that the close working relationship necessary to conduct a successful review could be established. We asked if the Council would confirm whether the locations used at the last review in 1996/1998 to deposit material for public consultation remained appropriate and if they would provide details of alternatives where necessary. We also asked for a list of the newspapers circulating within the Council area normally used for the publication of Statutory Notices.

16. We asked the Chief Executive if, prior to our proposed meeting, we could be informed of any particular issues that the Council might wish to discuss with us.

## General Issues

17. Three developments have made it possible for us to reconsider the process and practices of reviewing local government electoral arrangements and of accurately defining the boundaries of proposed wards. Firstly, the availability of computer-based geographic information systems (GIS) provides us with the ability to analyse a variety of localised data and then to develop and explore options for revised electoral ward geography. Secondly, the GIS technology, used in conjunction with Ordnance Survey (OS) large-scale digital data also allows for the boundaries of wards to be more precisely defined than has hitherto been possible – thus obviating the need for written boundary descriptions. Thirdly, the Representation of the People (Scotland) (Amendment) Regulations 2002 provide us, for the first time, with formal access to information contained in electoral registers and,

importantly, allow us to obtain that information in an electronic format which can be managed and spatially examined by means of our GIS facilities.

18. Use of the GIS technology, large-scale digital mapping and electoral register data in examining, reviewing and defining ward boundaries is outlined below.

## Definition of Electoral Ward Boundaries

19. Defining ward boundaries can raise particular difficulties in areas where changes to the built geography are not reflected on available paper maps. In many parts of Scotland such changes are now occurring more rapidly than in the past, with considerable consequences for our boundary review work.

20. The introduction of OS MasterMap® large-scale digital mapping affords the opportunity for the first time for electoral ward boundaries to be defined by means of unique topographical identifiers (TOID®s) which accurately identify the position of the natural and built features depicted by the large-scale digital data. Accordingly, it is possible to identify the boundaries of electoral wards electronically by directly linking the line of any boundary to, for the most part, the OS TOID®s.

21. All Councils in Scotland now have full access to OS MasterMap®, as do all central government bodies, agencies and government-sponsored organisations with GIS facilities. Generally, all such bodies using large-scale digital mapping have a preference for boundary information to be defined against that background.

22. As a consequence:

- all of the proposed ward boundaries we recommend are directly related to digital information contained in the Topography layer of OS MasterMap®, which was supplied to us by OS in July 2004, except where circumstances demand that a line between 2 unconnected TOID®s is necessary, for example, in crossing a road or river;
- where part of a ward boundary and the boundary of the Council area are coterminous, that part of the ward boundary is the boundary of the Council area as depicted in the Administrative Boundaries theme of the Topography Layer of OS MasterMap® as supplied to us by OS in July 2004; and
- where applicable, the coastal boundary of a ward is defined by means of the low water mark springs as depicted in a large-scale digital data set (prepared on our behalf by OS from its large-scale digital information) except in areas where, historically, all or part of the Council's seaward boundary presently has a recognised off-shore definition.

23. We are aware that, at the time of this review, OS is undertaking a Positional Accuracy Improvement initiative (PAI) and that it does not expect to complete this work in Scotland until March 2006. Further, the results of the PAI will not be fully incorporated into the OS large-scale digital maps until later in that year. Even after this detailed work by OS, the position of residential property existing at the time of our review will remain within the ward as defined by our review. This provides better long-term accuracy than would be provided by written boundary descriptions.

24. Drawing these matters together, we have worked on the reasonable assumption that the boundaries of wards will be more accurately defined than has been possible at previous reviews

and that any future dispute over the line of a particular boundary will be capable of resolution by reference to deposited copies of the ward boundaries in digital form in conjunction with deposited copies of the OS MasterMap® data (Topography layer and Administrative Boundaries theme of the Topography layer and coastline data) mentioned at paragraph 22 above.

## Electorate Data used in the Review

25. As mentioned at paragraph 17 above, in preparation for this review, we investigated and tested the potential offered by GIS technology in the preparation of proposals for revised electoral arrangements. To make fullest use of GIS systems in our review activities it is necessary to have the basic numerical data, for the most part electorate information, in a format which allows them to be directly associated with digital mapping showing the underlying geography to which it relates. Ideally, our preference would have been to link addresses in the electoral register directly to the background geography by means of a geo-referenced address database. However, in the absence of a definitive national address database, and being aware of the shortcomings of available address-based GIS databases, we researched the potential for making use of postcode geography maintained by the General Register Office for Scotland (GRO(S)) as a means of identifying the number of electors on the electoral register at a level of resolution low enough for us to develop and consider proposals for the boundaries of revised electoral wards. Initial tests, involving matching the postcodes for addresses on the electoral register with the GRO(S) postcode geography files, indicated that we could successfully identify electors on the electoral register at the small-user postcode which contained their address and, as a consequence, establish accurate counts of electorate for these postcodes.

26. The availability of up-dated electoral register information on a monthly basis allowed us to associate information on the electoral register at July 2004 with the most up-to-date postcode geography available from GRO(S) (August 2004) thus minimising the potential for mismatches between the two data sets. As a consequence, at the start of our review in the City of Edinburgh Council area, of the 336,013 electors on the register at July 2004, 335,951 (99.98 percent) could be identified within the postcode geography held in our GIS. The residual number of 62 electors were contained in 13 postcodes which, as far as we could ascertain, were newly allocated by the Post Office and, as such, had not yet appeared in the latest Post Office Address Files which GRO(S) uses to update and maintain its postcode geography system. We were, therefore, confident that postcoded electorate data for the City of Edinburgh Council area could be used as the initial building blocks for reviewing electoral arrangements in that area.



## Part 2 The Review in the City of Edinburgh Council Area

### Meeting with The City of Edinburgh Council

1. Our initial meeting with The City of Edinburgh Council took place on 5 October 2004 at 16:00 hrs at the City Chambers, High Street, Edinburgh. We were represented by our Chairman John Marjoribanks who was accompanied by Bob Smith from our Secretariat.
2. We made a short illustrated presentation which set out the background to the review and the nature of our GIS systems, which provided us with the facility quickly and accurately to prepare proposals and examine alternatives. We demonstrated that the GIS allowed us to look closely at relevant matters such as the geography and topography, settlement patterns and communication links within Council areas. We explained that, as required by the Schedule 6 Rules, we needed information from the Council on house building, demolitions and known institutional development for the 5-year period to 2009 in order to form a view on the number of electors in the Council area at that time. We also invited Councils to provide information which would help us define areas recognised locally as communities. We set out our proposed timetable for the review, which envisaged 7 stages with completion by August 2006. A copy of the outline timetable is set out at Appendix E.
3. Following our presentation, we answered some general questions on matters relating to the review process. We also invited, and took careful note of, various views expressed in relation to the review in the Council area.

### Concluded View of the Council

4. The Ministerial Directions (Appendix B) issued on 30 August 2004 stated that each Council should, if it so desired, submit its concluded views on review matters to the Commission within one month of the date of our initial meeting. The City of Edinburgh Council submitted its concluded view to us on 1 November 2004 enclosing a map showing the boundaries of natural communities prepared by a cross-party working group. A GIS compatible version of these boundaries incorporating minor revisions was provided on 11 November 2004.

### Aggregation of Existing Wards

5. As required by the legislation as amended, our Secretariat set out for us options for creating new 3 or 4 member wards by combining existing single member wards.
6. The extensive green belt at the western side of the Council area posed particular difficulties and the design of wards here had consequences for wards elsewhere within the Council area. Two options emerged: either existing wards covering the area could be aggregated to create a geographically extensive ward; or the area could be divided into two parts and these could be combined with neighbouring communities along the main lines of communication into the City from the west.
7. In considering options across the wider area, it was evident that many of the communities identified by the Council were divided between 2 or more wards. After consideration of these and all other relevant matters, we were not persuaded that our initial proposals should be based on a

configuration dictated by a simple aggregation of existing wards. In particular, we noted that the approach:

- prevented account being taken of the natural communities identified by the Council; and
- did not allow proper regard to be taken of changes in the distribution of the electorate forecast for 2009 consequent on housing and other developments.

8. As a consequence of our decision, our Secretariat prepared alternative designs for revised wards using the methodology made known to the Council and bearing in mind all of the observations provided to us in its concluded view.

## Initial Proposals

9. With the problems on the western edge of the Council area in mind, our Secretariat prepared a number of options. The various ward designs were broadly acceptable within the terms of the statutory rules regarding parity and, reflected the structure of communities provided by the Council. With that in mind, we focussed on the areas of difficulty.

10. The green belt electorates could not all be contained within a single ward within the terms of the statutory rules which allowed only for 3 and 4 member wards. Our Secretariat concluded that the most acceptable means of dealing with the western green belt and its impact on the design of wards across the Council area would be to divide on a north/south basis, thus allowing communities along the main transport links into the City to be brought together with urban neighbours. The M8 provided a strong, easily identifiable ward boundary and enabled the association of South Queensferry, Dalmeny, Kirkliston, Ratho Station and rural electorates with Cammo, Barnton, Cramond and Davidson's Mains. Likewise, Ratho, Balerno and Currie were associated with adjoining electorates linked to the contiguous built-up area by the A70 and A71. We noted that the resulting configuration of wards conformed closely with the structure of communities identified by the Council, was acceptable within the terms of the statutory rules regarding parity and that, with few exceptions, the boundaries between wards were clearly defined. We explored how the few remaining anomalies might be resolved but were unable to find a better solution. We agreed therefore that, subject to a minor amendment to the boundary between Wards 5 and 16 in the vicinity of the new Edinburgh Royal Infirmary, our Secretariat's proposals should form our initial proposals.

11. We concluded that our initial proposals for the City of Edinburgh Council area should comprise 17 electoral wards of which 10 were 3-member wards and 7 were 4-member wards as follows:

Ward Number a	Forecast Electorate b	Number of Elected Members c	Average Electorate per Member d	Divergence from Parity (%) e
1	18,600	3	6,200	2
2	17,590	3	5,863	-4
3	17,680	3	5,893	-3
4	18,290	3	6,097	0
5	24,370	4	6,093	0
6	25,050	4	6,263	3
7	17,380	3	5,793	-5
8	17,830	3	5,943	-2
9	24,390	4	6,098	0
10	25,200	4	6,300	4
11	23,480	4	5,870	-3
12	24,080	4	6,020	-1
13	17,600	3	5,867	-4
14	23,600	4	5,900	-3
15	18,730	3	6,243	3
16	19,320	3	6,440	6
17	19,480	3	6,493	7

## Informing the Council of our Initial Proposals

12. We submitted our initial proposals to The City of Edinburgh Council on 7 March 2005 illustrated by maps showing the boundaries of the proposed wards. We also provided details of the forecast of electorate for each ward at 2009, a GIS file containing the boundaries of each ward and a CDROM containing maps of the proposed ward boundaries in PDF image format. (A GIS file containing the GRO(S) postcode geography showing the 2004 electorate together with the expected new build/demolition etc data and the electorate for each postcode at 2009 arising from these components of change was also available to the Council to assist with the review process.)

13. We asked the Council to provide its views on our initial proposals within two months as specified in the legislation. Contact was maintained with the Council at officer level throughout this initial consultation period.

## The City of Edinburgh Council Response

14. The City of Edinburgh Council responded to our initial proposals on 29 April 2005. Following an extensive consultation no substantive changes to our initial proposals were suggested. Subsequently, we were informed that the Council had considered our initial proposals on 12 May 2005 and 3 minor amendments were requested which would transfer:

- Leith Academy and its grounds from Ward 14 to Ward 15;
- Lochend Park from Ward 14 to Ward 17; and
- Ravelston Park and Woodlands from Ward 8 to Ward 11.

15. The Council provided names for the proposed wards on the basis that they were for the purposes of the public consultation and did not represent the concluded view of the Council.

## Consideration of the Council Response to the Initial Proposals

16. We noted that, although 2 of the proposals marginally increased the divergence from parity, the modifications were acceptable within the terms of the Statutory Rules and all provided for clearly defined boundaries. We agreed, therefore, that the amendments should be incorporated into our provisional proposals. We also agreed to adopt as our own the ward names suggested by the Council.

## Provisional Proposals

17. Our provisional proposals for revised electoral arrangements in the City of Edinburgh Council area made provision for a Council of 58 elected members in 10 wards each returning three-members and 7 wards each returning four-members as follows:

Ward		Forecast Electorate	Number of Elected Members	Average Electorate per Member	Divergence from Parity(%)
Number a	Name b				
1	Almond	17,590	3	5,863	-4
2	South West Edinburgh	18,600	3	6,200	2
3	Clermiston and East Craigs	17,680	3	5,893	-3
4	Forth	24,390	4	6,098	0
5	Inverleith	23,480	4	5,870	-3
6	Corstorphine and Murrayfield	17,830	3	5,943	-2
7	West Edinburgh and Gorgie/Dalry	25,050	4	6,263	3
8	Colinton and Fairmilehead	18,290	3	6,097	0
9	Craiglockhart and Fountainbridge	17,380	3	5,793	-5
10	Meadows and Morningside	25,200	4	6,300	4
11	Central Edinburgh	17,600	3	5,867	-4
12	Leith Walk	23,260	4	5,815	-4
13	Leith	18,870	3	6,290	3
14	Craightinny and Duddingston	19,680	3	6,560	8
15	Southside and Newington	24,080	4	6,020	-1
16	South East Edinburgh	24,370	4	6,093	0
17	Craigmillar and Portobello	19,320	3	6,440	6

18. We published our provisional proposals for revised electoral arrangements in the City of Edinburgh Council area on 2 June 2005. These differed from our initial proposals in that they reflected the Council's proposed revisions of the boundaries of Wards 8, 11, 14, 15 and 17. In addition, minor changes necessary to fix the proposed boundaries to the OS MasterMap® TOID®s (see Part 1 paragraphs 19-24) were incorporated.

19. A statutory notice, detailing where our provisional proposals had been deposited for the public consultation and setting out the arrangements we had made for receiving representations,

was published in both the Evening News and the Scotsman. Copies of the documents and maps deposited for the public consultation were also placed on our web site. A short news release was issued on 1 June 2005. The Council was also provided with copies of the documentation and maps on CDROM, which it was free to distribute on a wider basis. Further, we provided the Council with GIS files containing the proposed ward boundary details.

20. All MPs and MSPs with a constituency interest were provided with copies of our provisional proposals on CDROM as were the headquarters organisations of the political parties represented at the Scottish Parliament. We also informed the Scottish Parliament Information Centre, Community Councils, Electoral Registration Officers and the Electoral Commission of our provisional proposals.

21. We asked that representations should be made to us within the 12-week period ending on 25 August 2005. We informed all concerned that representations could be made by writing to our Secretary at 3 Drumsheugh Gardens Edinburgh, EH3 7QJ, by email at [city.of.edinburgh@lgbc-scotland.gov.uk](mailto:city.of.edinburgh@lgbc-scotland.gov.uk), by fax at 0131 538 7511 or by using the representations pro forma accessible on our web site at [www.lgbc-scotland.gov.uk](http://www.lgbc-scotland.gov.uk). Those making representations were asked to provide their full postal address including postcode.

## Representations

22. Six hundred and thirty-four representations were received during the statutory public consultation. The main points raised by these submissions are summarised below:

### MPs

**John Barrett** objected to the splitting of Davidson's Mains into 3 wards because such fragmentation was neither desirable or necessary. Over 200 representations were enclosed and a summary of the various points raised can be found at 'Other Representations'.

### MSPs

**James Douglas-Hamilton** supported more than 100 representations which proposed that Davidson's Mains and Silverknowes be contained within the same ward. A summary of the various points raised can be found at 'Other Representations'

**Mike Pringle** was concerned with the proposals for Wards 9, 10 and 15. The tenement areas to the west of Tollcross should be placed in a 3-member ward to include Dalry, Gorgie, Fountainbridge and part of Ward 10 lying west of Bruntsfield Place and Colinton Road and north of Gillsland Road. Moat should be included in a different West Edinburgh ward, which would allow Craiglockhart to be linked with Morningside in Ward 10. The boundary between Wards 10 and 15 should be amended to follow the western boundary of the current Newington Ward rather than Blackford Avenue. All of the Royal Park and the Meadows (north of Melville Drive) should be included within Ward 15 and the southern boundary of Ward 15 should follow Lady Road and Liberton Road. All the houses with access to Old Dalkieth Road should be included within Ward 16. The Liberal Democrat Group representation would address these concerns, achieve better community links, and, hence, more adequately reflect the intentions of the legislation.

**Margaret Smith** opposed the splitting of Davidson's Mains and Silverknowes between 3 wards. They were coherent, integrated and vibrant communities and she had received almost 400 letters of protest.

The strong local ties between Ratho, Ratho Station and Newbridge were not recognised by the proposals. The M8 was not a barrier to communication between these communities: the proposals jeopardised the viability of Ratho & District Community Council and resulted in Ratho Village being left with little, if any, local government representation. The transfer of Ratho Station and Newbridge from Ward 1 to Ward 2 would have no impact on parity, if the area to the east of Kingsknowe Golf Course was removed from Ward 2.

Including Cramond in Ward 1 was justified; and two amendments at Barnton Gardens and at Lauriston Castle/Cramond House were supported.

## Councillors

**Councillor Jenny Dawe** objected to our proposals on behalf of the Liberal Democrat Group. Wards 7, 9 and 10 raised the most fundamental issues and there were other local concerns with Wards 1, 2 and 4. An alternative configuration was submitted which, it was suggested, achieved better community links and more closely conformed to the Schedule 6 rules.

**Councillor George Grubb** was concerned about the inclusion of Kingsknowe in Ward 1 rather than with Gorgie and Dalry in Ward 7. Davidson's Mains and Silverknowes were one community, the former being the centre for shopping, schooling, and other services, and both communities should be in Ward 1.

**Councillor James Lowrie** objected to all Silverknowes and Lauriston Farm Road addresses being placed in Ward 4; 200 residents had agreed that the proposals would be detrimental for the area. (A summary of the various points within the representations concerning Silverknowes can be found at 'Other Representations.')

The boundary proposed for the Corbiehill/House O'Hill area was artificial, because houses in this area had been part of Davidson's Mains village since their construction and residents had no desire to be placed in a different ward. Queensferry Road was the natural boundary and all properties south of the road could be separated from Davidson's Mains.

**Councillor Fred Mackintosh** generally supported Ward 15 but suggested that the boundary should be revised to incorporate all of Holyrood Park. Few electors would be affected.

The northern boundary of Ward 16 should be amended to follow Lady Road and Liberton Road. The King's Buildings Campus and the community on the north east side of Blackford Hill was separated from local shops, church and neighbours in Ward 15. The western boundary between Wards 10 and 15 should be amended to follow that of the current Newington Ward, rather than Blackford Avenue.

Proposals for the Grange from Whitehouse Loan to Mayfield Road were welcomed. The Meadows, east of Middle Meadow Walk, should be included in Ward 15 because it made little sense to separate part of the park from adjoining houses. Problems arose from this part of the Meadows currently being in the Southside Ward rather than in the Sciennes Ward.

Regarding the wider area, there were concerns about the effect of the proposals on community links caused, for example, by the size and shape of Wards 7 and 9. It was

noted that there were no road links between the Fountainbridge part of Ward 9 and the Moat and Craiglockhart areas of the same ward that did not pass through Wards 7 or 10. Further, the tenement communities to the west of Tollcross and Bruntsfield Links should be in a 3-member ward that included Dalry, Gorgie, North Merchiston, Fountainbridge and that part of the Meadows and Morningside Ward west of Bruntsfield Place/Colinton Road, and north of Gillsland Road.

The alternative proposals of the Liberal Democrat group were supported.

**Councillor Liz O'Malley** considered that Ward 9 included very different communities. The tenement areas within Wards 10 west of Bruntsfield Place, and within Wards 9 and 7 had more in common and should form one ward. The boundary to the north of Ward 10 should be the Meadows. The area east of Middle Meadow Walk should be in Ward 15 and the boundary between Wards 10 and 15 at King's Buildings should continue southwards along the railway line to the east of Midmar Drive.

**Councillor Marjorie Thomas** welcomed the proposed Ward 13.

**Councillor Susan Tritton** commented on wards along the Union Canal which, she considered, divided communities further out from the city centre whilst forming a link in the Lochrin Basin area. There should be a link between Fountainbridge, Tollcross, Dalry, Bruntsfield and possibly the Marchmont tenements. This would resolve the peculiar shape of Ward 9 which included communities that have little in common.

**Councillor Phil Wheeler** was content with Ward 6.

## Community Councils

**Blackhall Community Council** requested that the boundary of Ward 5 should be amended to include Craigleith Crescent, Craigleith View and Mary Erskine's School. The area was included in the new draft City of Edinburgh Community Council boundaries for Blackhall and Craigleith, was part of Blackhall Primary School catchment and was within the area covered by Blackhall Community Association.

**Cramond Community Council** considered that our proposals for Ward 3 were generally acceptable but sought changes to the boundary between Wards 1 and 4. To avoid confusion in Barnton Gardens and maintain a sense of balance on Cramond Road South, numbers 2 to 26 Barnton Gardens should be transferred to Ward 1. The grounds of Lauriston Castle and the fields near to Cramond House had strong links with Cramond and Davidson's Mains, and should be transferred to Ward 1.

The proposed division of Davidson's Mains, Silverknowes, Corbiehill and House O'Hill between various new wards was viewed with concern. No revisions which affected Cramond, Barnton and Cammo should be considered.

**Fairmilehead Community Council** requested that the boundary between Ward 8 and Ward 10 be amended to follow Braids Hill Drive, which was well known as a ward and police beat boundary. The proposed boundary excluded the Riselaw area from Ward 8, thereby running contrary to work which had secured its inclusion within Fairmilehead Community Council area.

**Longstone Community Council** objected to being associated with Ward 7 because the areas had nothing in common. Recent changes to the Westminster constituency boundaries had been opposed and there could be different boundaries for Westminster, Holyrood, Wards and Community Councils. The Community Council should be placed within one ward or with its more natural neighbours.

**Newhaven Community Council** was concerned that, under the provisional proposals, its area would be split between 2 large wards represented by 7 Councillors. This would be unworkable, could result in the weakening of bonds between the Community Council and Councillors, and ultimately result in the break-up of the Community Council.

The size of the new wards and the social composition of the areas would result in the concerns of the Community Council area being swamped. This should be avoided at a time when involvement in political and community affairs was low.

Newhaven Village was never a part of Leith and should not be separated from the rest of the Community Council area. The village was not separated by a recognisable boundary and was connected to the remainder of the Community Council area by school catchments. The provisional proposals had been produced to ensure wards of the necessary electorates. The boundaries of the Forth and Leith wards should be reconsidered with a view to placing the Newhaven village in the same ward as the rest of the community.

**Ratho & District Community Council** considered that its area encompassed several villages which were dependent upon each other for shared services and facilities. Breaking this arrangement would be disruptive and detrimental.

There were strong ties between Gogar, Ingliston, Ratho Station, Newbridge, Ratho, Cliftonhall and Bonnington. All relied on the facilities and services found in Ratho, Ratho Station and Newbridge. There would be difficulties should Ratho be associated with Currie and Balerno. The local elected member for the area would give preference to the larger more demanding areas and Ratho would receive a reduced level of representation. There was no reason for change. The M8 was neither a natural boundary nor a barrier to communication.

The proposals also jeopardised the viability of the current Community Council. There would be insufficient population to sustain the Community Council. Ratho Village would be left without representation. Further, the remaining parts of the ward would merit representation by only one Community Council, which could not cope with the large workload.

**Stockbridge Community Council** considered that the omission of 'Stockbridge' from the name of Ward 5 would distance the local electorate from the elected representatives.

**Tollcross Community Council** proposed that the boundary between Wards 10 and 11 should follow Melville Drive rather than Lauriston Place, thus creating a more natural boundary which contained Lister Housing Association within a single ward.

## Political Parties

**Edinburgh West Conservative and Unionist Association** supported the local Association's objection to our proposals for Davidson's Mains and Silverknowes, because these were one community centred round the old village which provided almost all services.

Part of the present Davidson's Mains ward to the north of Queensferry Road should not be detached from its obvious neighbour by an unnatural boundary cutting across Corbiehill Road. This area should be reunited with the rest of the polling district WWK proposed for Ward 1 and the Silverknowes streets (including Lauriston Farm Road) of WWI that were in the proposed Ward 4.

Combined, Davidson's Mains and Silverknowes should be associated with other communities to form a ward. They had nothing in common with Muirhouse, but they could be located in a ward that included Cramond. Alternatively, the combined area could be included within a revised Ward 4. Both options would require further consequential changes, but it should be possible to find a solution that maintained the integrity of Davidson's Mains/Silverknowes, that did not disrupt other community links, and kept electoral parity.

**The SNP Edinburgh West Constituency Association** objected to the proposals for Queensferry, Cramond, Davidson's Mains, Silverknowes, Muirhouse and Drylaw. It was stated that Cramond, Silverknowes and Davidson's Mains formed a natural community as did Muirhouse and Drylaw. Queensferry had nothing in common with Cramond. Ratho had been detached from Ratho Station and associated with Balerno and Currie in Ward 2. The joining together of wards that had no connection distorted rather than improved proportionality.

Queensferry should be with Dalmeny, Kirkliston and Ratho as they had similar demographic profiles, returned councillors from the same party and would form a coherent ward. They were villages and towns that were now satellite commuter areas.

The proposals broke up natural communities in the Cramond, Silverknowes, Drylaw and Queensferry areas. Drylaw, Muirhouse and West Pilton should be in one ward. Silverknowes and Cramond should be included within the same ward as Davidson's Mains. The commuter areas of Queensferry, Ratho, Ratho Station, Kirkliston and Newbridge should be included within another ward.

**Edinburgh South Liberal Democrats** were mainly concerned with the proposals for Wards 7, 9, 10 and 15. The shapes of Wards 7 and 9 made it harder for communities to work together. While it made sense to join tenement communities with villa areas where they were closely connected and shared community links, as in Wards 10 and 15, this did not apply to Wards 7 and 9. There was also no road linking Fountainbridge to the Craiglockhart part of Ward 9 that did not go through Wards 7 or 10.

Ward 7 made sense if it extended from the A720 to the Edinburgh South Suburban Railway line and included all of Longstone and Kingsknowe. Community links with the tenement communities to the west of Tollcross could be maintained in a 3-member ward that incorporated Dalry, Gorgie, Fountainbridge and part of Ward 10.

Craiglockhart and Moat had little in common, as they were divided by the Slateford Yards. If Moat was in a different west Edinburgh ward then Craiglockhart could be linked to Morningside in a ward that contained the Meadows and Craiglockhart Hill.

The boundary between Wards 10 and 15 should follow the western boundary of the current Newington Ward rather than Blackford Avenue. All of the Royal Park and the Meadows to the north of Melville Drive should be within Ward 15 and the southern boundary of Ward 15 should follow Lady Road and Liberton Road.

The proposals for Wards 16 and 17 were supported.

There were doubts that the M8 was a dividing line between Ratho and Ratho Station, there being no barrier to travel between the two. Edinburgh Airport prevented any north/south communication between Kirkliston and the Gogar Roundabout and would be a better boundary. The design of wards in this area had significant influence over arrangements for the south of Edinburgh.

The names 'Forth' and 'Southside and Newington' were not appropriate for Wards 4 and 15: the former could apply to many places and no roads with 'Newington' in their name were within in the latter. The plans for expansion within Ward 4 suggested that 'Waterfront' might be an appropriate name.

The Liberal Democrat Group alternative proposals were supported.

## Other Organisations

**Davidson's Mains & Silverknowes Association** stated that Davidson's Mains is at the centre of an integrated community, comprising Silverknowes, Corbiehill and House O'Hill which is dependent on the village for schools, shopping, medical, financial, local and community services.

The area should not be split between 3 wards and thus represented by 9 Councillors, each of whom might have different priorities and objectives. It would be impossible to make proper representation on behalf of common interests.

The Commission had failed in its statutory duty, under the Schedule 6 rules, to retain natural community links. The only solution was to transfer the areas concerned into Ward 1 and amend its eastern boundary to follow the existing Davidson's Mains Ward and Community Association boundaries between Silverknowes Parkway and Telford Road. To compensate, in part, for the increase of electorate within the Ward, Ratho could be transferred into Ward 2.

**Davidson's Mains Primary School Board** was concerned that the proposals would be detrimental to the school's links with the community, it would be necessary for councillors from 3 different wards to advise the Board. Were these councillors to have different priorities this could lead to friction. The school is part of the 'Safer Routes to School project' and its success could be jeopardised were the school catchment to be split between wards.

**Davidson's Mains Children's Gala** objected to the separation of Silverknowes from Davidson's Mains. The gala had been a popular feature for over 70 years and children participate from an area combining the parish of Davidson's Mains with the Davidson's Mains Primary School catchment. Having different councillors covering the area might make organising and fundraising more difficult, thereby jeopardising the long-term future of the gala.

**The Police Commander for the City of Edinburgh** informed us that in 2003 policing arrangements reorganised to create a single policing division that had coterminous boundaries with the City of Edinburgh Council and its internal structures. In designing the new policing arrangements a commitment was given to change the structure so that it aligned with wards. Since then discussions concerning the development of local

community planning had taken place with a view to ensuring that services were delivered and controlled at a local level to meet the needs of natural communities. It was recognised that elected representatives had a key role to play in the delivery of services from a strategic viewpoint. The need to connect elected members to local community planning areas and policing management, at that local level, had been central to discussions.

Consideration of new ward boundaries should take account of the need to ensure the recognition of Central Edinburgh as a unit, in terms of business and night-time economy, in the community planning structure.

Although the Police could support many of the proposals, the wards on the west side of the central part of the City did not seem to provide the best opportunity for community identity. In particular, Wards 6, 7 and 8 had unusual boundaries, which might create confusion in the minds of the public with regard to ownership and accountability.

## Other Representations

**A letter** suggested that the area bounded by the Figgate Burn, Milton Road West and Mountcastle Drive South, including the Southfields, had more in common with the Durhams, and that both looked towards Portobello and should be included in Ward 17. Milton Road West formed the natural boundary. Ward 14 should extend westward to incorporate part of Ward 12. Abbeyhill and the area immediately east of Easter Road belonged in the same ward as Meadowbank.

It might be necessary to move Craigentenny into Ward 17 to maintain parity. Craigentenny was currently in the existing Portobello ward and it would not be out of place in Ward 17 which would allow for a ward encompassing Willowbrae, Mountcastle, Restalrig, Meadowbank and Abbeyhill thus improving the provisional proposals and respecting community ties.

**A letter** proposed that Holyrood Park, together with Holyrood House in the Parish of Canongate, should be included within Ward 11. The ancient Abbey Sanctuary encompassed the Park. The Edinburgh World Heritage Trust's Management Plan argued that there should be a buffer zone around the current boundary of the World Heritage Site, which was broadly the same as the proposed ward. A ward boundary drawn too tightly around the site might compromise its protection. A wider boundary would emphasise the distinctiveness of natural features such as Arthur's Seat and Salisbury Crags.

**A letter** considered that effective representation would not be achieved because of the number of 3-member wards. Where there were no geographical constraints, the population density was high and where there were several possible groupings of the perceived communities then the number of 4-member wards should be maximised. This would result in 13\*4-member wards rather than 7.

In the northwest of the City 3 urban communities were combined with rural communities to the west, with which they have no links. An alternative set of proposals for the Council area based upon the natural communities identified by the Council was enclosed.

**A letter** objected to the name of Ward 2. Almost without exception, other new wards had local names, rather than compass-based descriptions and very few made reference to Edinburgh. Currie, Juniper Green, Balerno and Newbridge were designated Post Towns

throughout the new ward and the proper postal address did not include Edinburgh. Apart from road signs, postal definitions provided the only other identification for communities and there was risk of confusion now that the Westminster Constituencies included South West in place of Pentlands. The same name was used twice for different areas and it was difficult enough that Holyrood and Westminster boundaries differed without mixing up a local ward name with a new constituency. Two alternatives were proposed: Currie (as the senior settlement) or, Currie and Balerno.

The electorate in Ward 2 was above the average by more than 4% and trimming off the Clovenstone area, defined as houses lying to the east of Wester Hailes Road, would not pose a problem. The Millennium Wood and the City Bypass helped to form a greater division. Since Wester Hailes was developed over 30 years ago, effort has gone into instilling the sense of community that was initially lacking. The proposal to separate Clovenstone from the adjacent area to the north-west would be a step in the wrong direction.

Were this amendment accepted it would be possible to include additional electorate within Ward 2. The northern boundary of the ward along the M8 motorway did not take into account the local communities and the north-south divisive effect of the airport. The A8/A89 road would not be an ideal boundary. On balance, the River Almond provided the best boundary and would re-link Ratho to its station and adjacent Newbridge, providing community benefits.

**Five hundred and eighty-eight** representations from electors in Silverknowes, Davidson's Mains and Corbiehill/House O'Hill objected to our proposals. The majority of these were from Silverknowes residents who variously argued that the common and shared interests of Silverknowes and Davidson's Mains would be represented by different councillors who might have different priorities; the Commission had failed in its statutory duty to protect the strong natural, social and community ties; and Silverknowes/Davidson's Mains was one community. The proposed boundaries might also have implications for the future provision of local services, school catchments might change, and property values might be affected. There were no community links between Silverknowes and Muirhouse; and the Corbiehill and House O'Hill areas had always been part of Davidson's Mains.

**Fourteen letters** supported an amendment to the boundary between Wards 10 and 15, involving houses on the north eastern side of Blackford Hill. Otherwise the local shops, library and Post Office would be located within a separate ward and the residents would have no say in the way the new ward would be run. The Blackford Hill area identified more with Southside and Newington than Morningside, Merchiston and Marchmont.

**Two letters** objected to our proposals regarding Duddingston View and Duddingston Row. The area was not part of Bingham and there was no social, transport, school area or other direct connection between the two areas. Both streets were part of Duddingston.

## Consideration of Representations

23. The representations generally concerned Wards 1, 4, 5, 7, 9, 10 and 15. However, the majority of representations, related in whole or part to our proposals in the Davidson's Mains, Silverknowes, Corbiehill and House O'Hill areas which primarily affected Wards 1, 4 and 5. Other representations were principally concerned with issues arising around Wards 7, 9, 10 and 15, some of which had

consequences for adjoining areas. A number of representations requested a local inquiry. Few representations suggested alternative solutions which might resolve the issues raised.

24. When we reviewed the representations we found that we had sufficient information to make recommendations regarding revised electoral arrangements for the Council area and therefore had no need to call for a local inquiry. We noted that our provisional proposals for the majority of wards in the Council area had not given rise to objections.

25. Our proposals for Wards 1, 4 and 5, made up the large majority of representations, and most of these advocated that Silverknowes should be included in a ward with Davidson's Mains.

26. It was evident that including Silverknowes with Davidson's Mains in Ward 1 would have a detrimental impact on electoral parity in Wards 1 and 4 unless consequential changes could be made elsewhere in wards where we had received no objection to our proposals. Redressing the imbalance in parity in Ward 4 could be achieved only by moving electors from Ward 13 because communities in Wards 5 and 12 were separated from Ward 4 by the strong, well defined boundary of Ferry Road. Removing electorate from Ward 13 required a compensating transfer of electors from either Ward 12 or Ward 14 and we could not achieve that change without adversely affecting communities within these wards. Whilst we had sympathy with the requests for change we agreed that it would not be acceptable to modify our proposals by transferring Silverknowes into Ward 1 because of the resulting imbalance in electors within wards across a wide area and the community difficulties created elsewhere.

27. When we considered whether there was scope to transfer Silverknowes, Corbiehill and House O'Hill into Ward 1 we found that it isolated electors in Blackhall and an area to the south of Telford Road from the main body of Ward 5. Further, the change in electorate required part of the revised Ward 1 to be detached and relocated in an adjacent ward. There was no scope to make compensating amendments by gaining electorate from Ward 3. The only alternative was to remove electors within the green belt area at the southern end of Ward 1 and relocate them in Ward 2. However, the representations from electorate in the area of Ratho Station suggested that they had no wish to be located in a ward which contained Currie and Balerno; and, in our view, the M8 provided an appropriate, clearly defined boundary. A transfer of electorate in this area would require further consequential changes in areas adjacent to Ward 2 and we saw little scope for such action that did not have a potentially adverse impact on the structure of communities defined by the Council. Accordingly, we were not persuaded that the proposal to include Silverknowes, Corbiehill and House O'Hill in Ward 1 should be adopted.

28. There was a strong desire to bring together the 4 communities in a single ward and as a consequence we considered if it would be possible to relocate all of them within Ward 4. This would require a compensating transfer of electors from Ward 2 to Ward 1, there being no scope to adjust the boundaries of Ward 3; and there would be an adverse impact on the Boundary of Ward 5 at Blackhall and Telford Road which we describe above. We noted that representations received from the Silverknowes area had made it clear that they considered that the area had no links with Muirhouse or West Pilton, and there had been no demands from electors in Davidson's Mains to be relocated together with Silverknowes in Ward 4.

29. Bearing these views in mind we were not persuaded that our provisional proposals for Wards 1 and 4 could be amended without the need for consequential changes affecting wider areas in relation to which we had not received any representations objecting to our provisional proposals.

30. In examining the suggested inclusion of numbers 2 to 26 Barton Gardens, Lauriston Castle and the fields near Cramond House within Ward 1 we uncovered a boundary anomaly that affected

numbers 12-28 Barton Gardens. There were no implications in terms of divergence from parity and we agreed that the boundary should be amended to bring it into line with community boundaries provided by the Council. We were, however, not persuaded to amend the boundary in the vicinity of Lauriston Castle.

31. We considered an amendment to the boundary of Ward 5 at Craigleith Crescent and Craigleith View which extended to incorporate Mary Erskine's School but were not persuaded that the amendment improved upon the boundary we proposed which reflected the community boundaries provided by the Council.

32. In our consideration of those representations concerning Wards 1 and 2 in the Ratho area we re-examined our proposals in the light of other representations which sought amendments to our proposals for wards 1, 4 and 5. We noted that our proposals had regard for the structure of communities provided by the Council, that no objections had been received from members of the public regarding our proposals in this area, and that the M8 provided an appropriate, clearly defined boundary. Accordingly, we were not persuaded that the proposals improved upon our provisional proposals and agreed that they should not be adopted.

33. We assessed the representations which sought to transfer houses on the north eastern aspect of Blackford Hill and King's Buildings Campus from Ward 10 to Ward 15. We concluded that a rather more substantial change which relocated all of the community in the immediate area into Ward 15, as defined by the Council, would better balance the electorates in both wards and reflect community boundaries. Accordingly, we agreed that the change should be adopted.

34. We considered those representations concerning the location of the Royal Park and saw that two views had emerged: all of the Park should be contained within either Ward 11 or Ward 15 rather than in Ward 14. The western boundary that we proposed for Ward 14, for the most part, ran along the clearly defined ground features of Duke's Walk, Queen's Drive and the line of a cycle track running south of Duddingston Loch. Although no electors were involved in the area concerned, we were not persuaded that the alternatives improved upon the boundary we proposed. Accordingly, we agreed that neither revision should be adopted.

35. We considered the representation proposing various revisions to our proposals for ward boundaries around the Meadows, noting that little substantive evidence had been submitted and that organisations, rather than electors within the affected areas, had objected to our provisional proposals. We noted, however, that the community boundary provided by the Council followed Middle Meadow Walk and that a revision which would use that line had some support. We therefore agreed to amend our provisional proposals thus adopting Middle Meadow Walk as the boundary between wards 10 and 15.

36. The representations concerning a realignment of the southern boundary of Ward 15 at Lady Road and Gordon Terrace did not involve electorate; and it produced a strong, clearly identifiable boundary. Accordingly, we agreed to amend our proposals in this area.

37. In considering issues arising from the elongated shape of Wards 7 and 9, we noted that under our proposals there were good transport links between the western and eastern extremities of both wards. Further, both wards comprised aggregations of communities identified by the Council and had strong regard for the boundaries provided to us.

38. With regard to the eastern extents of Wards 7, 9 and 10, in assessing the proposals for a 3-member ward comprising the tenement communities to the west of Tollcross and Bruntsfield Links,

including Dalry, Gorgie, North Merchiston and Fountainbridge (including the Lochrin Basin), we found that our proposals reflected the community structure identified by the Council. The introduction of STV PR made it inevitable that different dwelling types would be brought together within larger wards. We also noted that the Community Council in the area that had made representations, had not raised these issues, and that no electors in the areas concerned had made representations objecting to our proposals.

39. We found that the Liberal Democrat Group's alternative structure departed frequently from the community boundaries identified by the Council and that the range of divergence from parity was wider than our proposals. We agreed that we could not be overly influenced by dwelling types. With all of these matters in mind, we were not persuaded that the alternative configuration as it affected Wards 7, 9 and 10 improved upon our provisional proposals and we agreed that it should not be adopted.

40. We considered the representation which sought the transfer of Kingsknowe from Ward 2 to Ward 7, and found that the change created a greater imbalance in ward electorates and did not improve upon our provisional proposals. Likewise, we considered the representation which sought the transfer of Clovenstones and Kingsknowe from Ward 2 to Ward 7. We noted that the proposal had a significant adverse effect on electoral parity which would require further substantial changes over a wider area to rebalance electorates. Bearing the above in mind, we were not persuaded to amend our provisional proposals for these wards.

41. In considering the objection to our association of Longstone with Gorgie/Dalry we noted that a consequence of the increased ward sizes necessary for the introduction of STV PR was that communities which considered that they had little in common with others some distance away with which they had not previously been associated might well be located with them in the same ward. We noted that we could not be overly influenced by the various boundaries devised by different organisations, including the Boundary Commission for Scotland. Our proposals brought together communities within the terms of the Statutory Rules and took cognisance of the structure of communities identified for us by the Council. We concluded that it would not be possible to reconfigure our proposals in this area in the manner requested without embarking upon a radical reconstruction of our provisional proposals across the whole of the Council area. Accordingly, we agreed that our provisional proposals for this area should not be revised.

42. We examined the proposal for 2 amendments to the boundary between Ward 10 and 15 at Beaufort Road and Argyle Place. Regarding Beaufort Road, we concluded that a revision produced a better boundary between Marchmont and the Grange. At Argyle Place, we noted that the revision produced a stronger and more easily identifiable boundary. Neither change had any impact on electoral parity. We therefore agreed that our provisional proposals should be amended accordingly.

43. We considered a proposed amendment to the boundary between Wards 8 and 10 at Braids Hills Drive, which sought to realign it with a revised Community Council boundary. Our proposals were in line with the community boundaries provided to us by the Council and we had received no other objections relating to this area. We were not persuaded that the proposed amendment improved upon our provisional proposals and agreed, therefore, that the amendment should not be accepted.

44. We considered the representation concerning Wards 4 and 13 in the area of Newhaven and noted that adopting the proposals would involve the transfer of a substantial number of electors. We noted also that the revision would increase the imbalance of electorate between the wards; that our proposals reflected the community boundaries provided by the Council; and that no other representations objecting to our proposals in the area had been received. We concluded that the

proposed revision did not improve upon our provisional proposals and, accordingly, agreed that our provisional proposals should not be revised.

45. We considered the representation made by the Police Commander for the City of Edinburgh and, in particular, his comments relating to Wards, 6, 7, 8 and 11. Whilst we had sympathy with the expressed views, we noted that in developing our provisional proposals we had aligned ward boundaries (as far as it was possible and practicable to do so within the terms of the Statutory Rules) with the boundaries of communities provided to us by the Council. Accordingly, we were not persuaded that our proposals for these areas should be revised.

46. We considered those representations which sought amendments to our proposals for Wards 12, 14, and 17. We concluded that the revisions produced unacceptable imbalances in the electorates in all 3 wards and thus did not improve upon our provisional proposals. As a consequence we were not persuaded to revise our proposals for the wards concerned.

47. We examined the comprehensive alternative proposals for the Council area that resulted in 2\*3-member wards and 13\*4 member wards. We found that there was no requirement within the legislation for the development of predominantly 4 member wards and that, bearing in mind the information provided by the Council, our proposals best reflected identifiable communities. We also noted that the proposals contained a ward encompassing most of the green belt communities to the west of the Council area. At an early stage in our review we had explored similar options but had preferred an alternative that resulted in 2 wards which allowed all these communities to be associated with urban neighbours by means of the predominantly west/east transport links. Further, we noted that there was no substantial body of representation objecting to our proposals across the Council area that suggested a need for a fundamental redesign. Accordingly, we were not persuaded of a need substantially to revise our provisional proposals for the Council area

48. We considered those representations objecting to our provisional proposals for Duddingston View and Duddingston Row, noting that this was the only area where it had been necessary to depart significantly from the community boundaries provided by the Council. Whilst we had some sympathy with the representations, it was clear that, if adopted, the proposed change would increase the imbalance of electorates in Wards 14 and 17. We considered that the change did not improve upon our provisional proposals. Further, we had received no other representations raising objections to our proposals in the area concerned. Accordingly, we were not persuaded that our provisional proposals should be revised as requested.

49. We considered the representations which offered alternative names for some of the wards noting that there had been few requests and that there were no areas where a body of electors had proposed an alternative name. Our general policy throughout a number of reviews has been to adopt ward names proposed by Councils and bearing this in mind we concluded that the ward names in our provisional proposals should not be amended.

50. We noted those representations that supported our provisional proposals for revised electoral arrangements in various areas across the City.

## Part 3 Final Recommendation

1. Having conducted the fourth statutory review of electoral arrangements for the City of Edinburgh Council area in accordance with the procedures described in Parts 1 and 2 above, we recommend that future electoral arrangements for the said Council area should provide for a Council of 58 elected members in 10 wards each returning 3 members and in 7 wards each returning 4 members as follows:

Ward		Forecast Electorate	Number of Elected Members	Average Electorate per Member	Divergence from Parity(%)
Number a	Name b				
1	Almond	17,570	3	5,857	-4
2	South West Edinburgh	18,600	3	6,200	2
3	Clermiston and East Craigs	17,680	3	5,893	-3
4	Forth	24,410	4	6,103	0
5	Inverleith	23,480	4	5,870	-3
6	Corstorphine and Murrayfield	17,830	3	5,943	-2
7	West Edinburgh and Gorgie/Dalry	25,050	4	6,263	3
8	Colinton and Fairmilehead	18,290	3	6,097	0
9	Craiglockhart and Fountainbridge	17,380	3	5,793	-5
10	Meadows and Morningside	24,500	4	6,125	1
11	Central Edinburgh	17,600	3	5,867	-4
12	Leith Walk	23,260	4	5,815	-4
13	Leith	18,870	3	6,290	3
14	Craighentiny and Duddingston	19,680	3	6,560	8
15	Southside and Newington	24,780	4	6,195	2
16	South East Edinburgh	24,370	4	6,093	0
17	Craigmillar and Portobello	19,320	3	6,440	6

2. The boundaries of the proposed electoral wards are described in the form of digital data as set out at Part 1 paragraph 22 of our report. These data files, which have been securely stored on magnetic media at the date of publication of our report, comprise GIS files in shapefile format containing the features copied from the OS MasterMap®, large-scale digital data as supplied to us at July 2004. A full copy of the OS MasterMap®, Topography Layer, the City of Edinburgh Council area boundary depicted in the Administrative Boundaries theme and the low water mark ordinary springs large-scale digital data (prepared on our behalf by OS from its large-scale digital information) has similarly been secured on magnetic media. These secured data files ensure that the proposed ward boundary polyline shapefiles data can be verified against the July 2004 version of the large-scale base mapping from which the proposed ward boundaries are derived.

3. A statutory notice, detailing where our report has been deposited for inspection was published in the Evening News and the Scotsman. A news release announcing the publication of our report was also issued.

4. A map at the print size and scale set out below has also been deposited for public inspection at the locations set out in the statutory notice:

- The City of Edinburgh Council area      A0      scale 1:28,000

5. Our report and the map detailing the recommended ward boundaries, together with individual maps of each of the recommended wards, are available on our web site at [www.lgbc-scotland.gov.uk](http://www.lgbc-scotland.gov.uk) and can be viewed or downloaded free of charge within the constraints imposed by Crown copyright.

## Appendices

- Appendix A Extract from Local Governance (Scotland) Act 2004
- Appendix B Direction Under Section 18(2A) of The Local Government (Scotland) Act 1973
- Appendix C Direction Under Section 18(2A) of The Local Government (Scotland) Act 1973
- Appendix D Local Government (Scotland) Act 1973, as amended  
Schedule 6 – Rules to be observed in considering electoral arrangements
- Appendix E Review Timetable
- Appendix F Illustrative Maps

## Appendix A

### Extract from Local Governance (Scotland) Act 2004

#### 4 Reviews of electoral arrangements

- (1) As soon as practicable after the commencement of this section the Boundary Commission shall-
  - (a) review the electoral arrangements for all local government areas for the purpose of considering future electoral arrangements for those areas, and
  - (b) formulate proposals for those arrangements.
- (2) Part II of the 1973 Act applies to a review under subsection (1) as it applies to a review under section 16 of that Act except that section 17 of that Act has effect as if it required-
  - (a) the Boundary Commission to submit a report on any review before such date as the Scottish Ministers may direct, and
  - (b) the Scottish Ministers to make an order under section 17 giving effect to the proposals of the Commission under subsection (1) (whether as submitted to them or with modifications).
- (3) The Boundary Commission shall, when complying with section 18(2)(aa) of the 1973 Act on a review under subsection (1), also inform the council of the reasons for any differences between-
  - (a) their draft proposals, and
  - (b) the draft proposals which would have been made had they been formulated on the basis that each electoral ward of a local government area is to consist of a combination of existing electoral wards (the rules set out in Schedule 6 to that Act having been disregarded in so far as those rules conflicted with that basis).
- (4) The Boundary Commission shall disregard subsection (3) when formulating proposals for future electoral arrangements under subsection (1).
- (5) The 1973 Act is amended as follows-
  - (a) in section 16(2) (duty of Boundary Commission to carry out periodic reviews of electoral arrangements), for “Schedule 5 to this Act” substitute “section 4(1) of the Local Governance (Scotland) Act 2004 (asp 9)”,
  - (b) in section 18 (procedure for reviews)-
    - (i) in subsection (2), after paragraph (a) insert-

- “(aa) at least two months before taking any steps under paragraph (b) below to inform other persons of any draft proposals or any interim decision not to make proposals, inform the council of any local government area affected by the review of those proposals or that decision;
- (ab) before taking any such steps, take into consideration any representation made to them by such a council during the period of two months beginning on the day on which the council is informed under paragraph (aa);”,
- (ii) after subsection (2) insert-
  - “(2A) The Scottish Ministers may give directions to-
    - (a) the Boundary Commission,
    - (b) the council of any local government area affected by a review, in relation to consultation under subsection (2)(a) above.
  - (2B) Such directions may be given generally or in relation to particular reviews or particular aspects of reviews.”,
- (c) section 20 is repealed,
- (d) in subsection (1) (interpretation) of section 28, in the definition of “electoral arrangements”, after “councillors”, where second occurring, insert “, the number of councillors for each electoral ward”,
- (e) in subsection (2) (review of electoral arrangements to be carried out in compliance with certain enactments) of that section-
  - (i) after “Act”, where first occurring, insert “or section 4(1) of the Local Governance (Scotland) Act 2004 (asp 9)”, and
  - (ii) for “section 5 of the Local Government etc. (Scotland) Act 1994” substitute “section 1 of the Local Governance (Scotland) Act 2004 (asp 9)”,
- (f) Schedule 5 is repealed,
- (g) in sub-paragraph (2) of paragraph 1 of Schedule 6, for the words from “of”, where fourth occurring, to the end of that sub-paragraph substitute “calculated by dividing the number of local government electors in each electoral ward of that local government area by the number of councillors to be returned in that ward shall be, as nearly as may be, the same.”, and
- (h) at the end of sub-paragraph (3) of that paragraph insert-
 

“but if, in any case, there is a conflict between those criteria, greater weight shall be given to the latter.”

## Appendix B

### **DIRECTION UNDER SECTION 18(2A) OF THE LOCAL GOVERNMENT (SCOTLAND) ACT 1973**

1. The Scottish Ministers, in exercise of the powers conferred by section 18(2A) and (2B) of the Local Government (Scotland) Act 1973 (“the Act”), and of all other powers enabling them in that behalf, hereby give the following directions to the Local Government Boundary Commission for Scotland (“the Commission”).
2. These directions apply in relation to any consultation carried out by the Commission, in accordance with section 18(2)(a) of the Act, with the council of any local government area affected by a review under Part II of the Act (“the council”).
3. In carrying out any such consultation, the Commission shall comply with the requirements set out in paragraphs 4 to 12 below.

#### **Information to be provided by the Commission**

4. The Commission shall, within 14 days of the date of this Direction, inform the council in writing, by letter, by recorded delivery, addressed to the Chief Executive of that council of the following–
  - (a) the timetable proposed by the Commission for that consultation;
  - (b) the timetable proposed by the Commission for the review to be conducted by the Commission under section 4(1) of the Local Governance (Scotland) Act 2004;
  - (c) the general approach the Commission proposes to adopt in formulating its proposals for ward boundaries;
  - (d) the information the Commission would like to have available to use in formulating those proposals;
  - (e) the assistance which that council would be asked to render to the Commission in the process of the review; and
  - (f) such other matters as the Commission considers appropriate.

#### **Process of consultation with the council**

##### **General**

5. The Commission shall take all reasonable steps to establish and maintain an ongoing dialogue with the council for the purposes of the review. That dialogue may be conducted in person, orally, in writing or otherwise.

6. In the course of the consultation, the Commission shall encourage the council-
  - (a) to establish, and communicate to the Commission, any proposals or ideas that the council may have in relation to new ward boundaries, or otherwise in relation to the formulation of the Commission's proposals; and
  - (b) to provide such factual information held by the council as the Commission or the council think relevant in relation to the formulation of the Commission's proposals.

### Meeting with the council

7. Subject to paragraph 9, the Commission shall meet with the council no later than twelve weeks after the date of the letter sent in terms of paragraph 4.
8.
  - (1) The Commission shall propose to the council 2 dates, and the times on those dates, on which that meeting might take place.
  - (2) Where the council indicates that those proposals are unsuitable then the Commission shall offer 2 further dates, and the times on these dates, on which the meeting might take place.
  - (3) All of the dates and times proposed by the Commission under this paragraph shall be within the ordinary working hours of the council.
  - (4) Nothing in this paragraph shall prevent the Commission and the council meeting at any time which is not within the ordinary working hours of the council where the Commission and the council so agree.
9. The Commission is not required to meet with the council where-
  - (a) the council indicates that it does not wish to meet the Commission; or
  - (b) the council fails to respond to any proposal made under
    - (i) paragraph 8(1), during the period of 14 calendar days beginning with the day on which the council received that proposal; or
    - (ii) paragraph 8(2), during the period of 7 calendar days beginning with the day on which the council received that proposal.

### Formal written views of the council

10.
  - (1) The Commission shall take all reasonable steps to ensure that they have received the concluded view of the council in writing on the matters raised in the consultation by no later than-
    - (a) the end of the period of four weeks beginning with the date of any meeting held in accordance with paragraph 7; or

- (b) in the event that, in terms of paragraph 9, no meeting took place between the Commission and the council, the end of the period of four weeks beginning with -
  - (i) the date on which the council indicated that it did not wish to meet the Commission; or
  - (ii) the date on which the period referred to in paragraph 9(b)(i), or if applicable, 9(b)(ii) ends,whichever may apply.

- (2) Where the Commission have not received the concluded view referred to in sub-paragraph (1), within the timescale provided for in that sub-paragraph, the Commission may disregard any conflict in the views that have been expressed by, or purportedly by, the council where, in the opinion of the Commission, those views conflict.

11. Where the Commission is of the opinion that it has not received the concluded view of the council it shall notify the council of that fact no fewer than 7 calendar days before the end of the consultation.

12. For the purposes of these directions, the Commission shall assume that a view expressed as being the concluded view of the council is the concluded view of the council if that view is expressed in a letter from the Chief Executive of the council to the Commission.

Andrew P Kerr

A member of the Scottish Executive

Edinburgh  
30th August 2004

## Appendix C

### **DIRECTION UNDER SECTION 18(2A) OF THE LOCAL GOVERNMENT (SCOTLAND) ACT 1973**

1. The Scottish Ministers, in exercise of the powers conferred by section 18(2A) and (2B) of the Local Government (Scotland) Act 1973 (“the Act”), and of all other powers enabling them in that behalf, hereby give the following directions.
2. These directions apply in relation to any consultation carried out by the Local Government Boundary Commission for Scotland (“the Commission”), in accordance with section 18(2)(a) of the Act, with the council of any local government area affected by a review under Part II of the Act (“the council”).
3. In taking part in such a consultation, the council shall comply with the requirements set out in paragraph 4 below.
4. For the purposes of enabling the Commission to exercise the functions conferred upon them by virtue of section 18(2)(a) of the Act, as read with the Scottish Ministers’ direction to the Commission dated 30<sup>th</sup> August 2004, the Council shall co-operate with the Commission and shall in particular:-
  - (a) establish and maintain an ongoing dialogue which, where appropriate, may include meeting with the Commission;
  - (b) take all reasonable steps to ensure that any views expressed, or purporting to be expressed, by it or on its behalf to the Commission are accurate;
  - (c) provide the Commission with all such information as the Commission may reasonably request; and
  - (d) provide the Commission with all such information as the Council considers relevant, including any proposals or ideas the Council may have, in relation to new ward boundaries, or otherwise in relation to the formulation of the Commission’s proposals.

Andrew P Kerr

A member of the Scottish Executive

Edinburgh  
30 August 2004

## Appendix D

### Local Government (Scotland) Act 1973, as amended Schedule 6 – Rules to be observed in considering electoral arrangements

1. (1) This schedule applies to the consideration by Scottish Ministers or the Boundary Commission of electoral arrangements for election of councillors of local government areas.
  - (2) Having regard to any change in the number or distribution of electors of a local government area likely to take place within the period of five years immediately following the consideration, the number calculated by dividing the number of local government electors in each electoral ward of that local government area by the number of councillors to be returned in that ward shall be, as nearly as may be, the same.
  - (3) Subject to sub-paragraph (2) above, in considering the electoral arrangements referred to in sub-paragraph (1) above regard shall be had to-
    - (a) the desirability of fixing boundaries which are and will remain easily identifiable;
    - (b) any local ties which would be broken by the fixing of any particular boundary but if, in any case, there is a conflict between those criteria, greater weight shall be given to the latter.
2. The strict application of the rule stated in paragraph 1(2) above may be departed from in any area where special geographical conditions appear to render a departure desirable.

## Appendix E

### Review Timetable

**Stage 1:** Initial consultation with Councils and the early establishment of an ongoing dialogue between the Commission and Councils for the purpose of the Review.

Councils are given full opportunity to communicate to the Commission any proposals or ideas that they may have in relation to the design of new wards. The Commission outlines the methodology underlying its intended approach to the Review.

Clarification of general review issues, both technical and administrative. Exchange of factual information between the Commission and Councils relevant to the design of proposed wards.

Discussion/exchange of information for any areas of concern.

**12 weeks**

**Stage 2:** Development of initial proposals by the Commission for each Council area with ongoing consultation between the Commission and Councils as necessary on emerging issues.

Preparation of maps, supporting documentation and GIS files of proposed ward boundaries for Councils once the Commission has completed drafting its initial ward schemes.

**10 weeks**

**Stage 3:** Initial proposals released to Councils. Two months allowed for the Council to comment on proposals, offer amendments and or alternatives. Further discussions with Council as required throughout this stage to clarify emerging issues relating to the initial proposals.

**9 weeks (2 months)**

**Stage 4:** Full consideration by the Commission of issues arising through stage 3 which might lead to revision/adjustment of initial proposals. Further liaison with Councils taken forward on a needs basis

**8 weeks**

**Stage 5:** Publication of the Commission's provisional proposals as part of the statutory public consultation process. Analysis of representations received. Seek Council views on aspects of representations and the impact they have on the provisional proposals as required.

**12 weeks**

**Stage 6:** Full analysis of representations received by the Commission.

Commission determines where a need has arisen for local inquiries, organises and conducts inquiries and reviews its provisional recommendations in light of inquiry reports.

Publication of revised recommendations where the Commission makes significant changes to its provisional proposals.

Consider representations received within 1 month.

Move to final recommendations where possible.

**20 weeks**

**Stage 7:** Complete final recommendations for all Council areas.

Complete review process, write and submit reports.

## Appendix F

### Illustrative Maps

Ward 1 – Almond

Ward 2 – South West Edinburgh

Ward 3 – Clermiston and East Craigs

Ward 4 – Forth

Ward 5 – Inverleith

Ward 6 – Corstorphine and Murrayfield

Ward 7 – West Edinburgh and Gorgie/Dalry

Ward 8 – Colinton and Fairmilehead

Ward 9 – Craiglockhart and Fountainbridge

Ward 10 – Meadows and Morningside

Ward 11 – Central Edinburgh

Ward 12 – Leith Walk

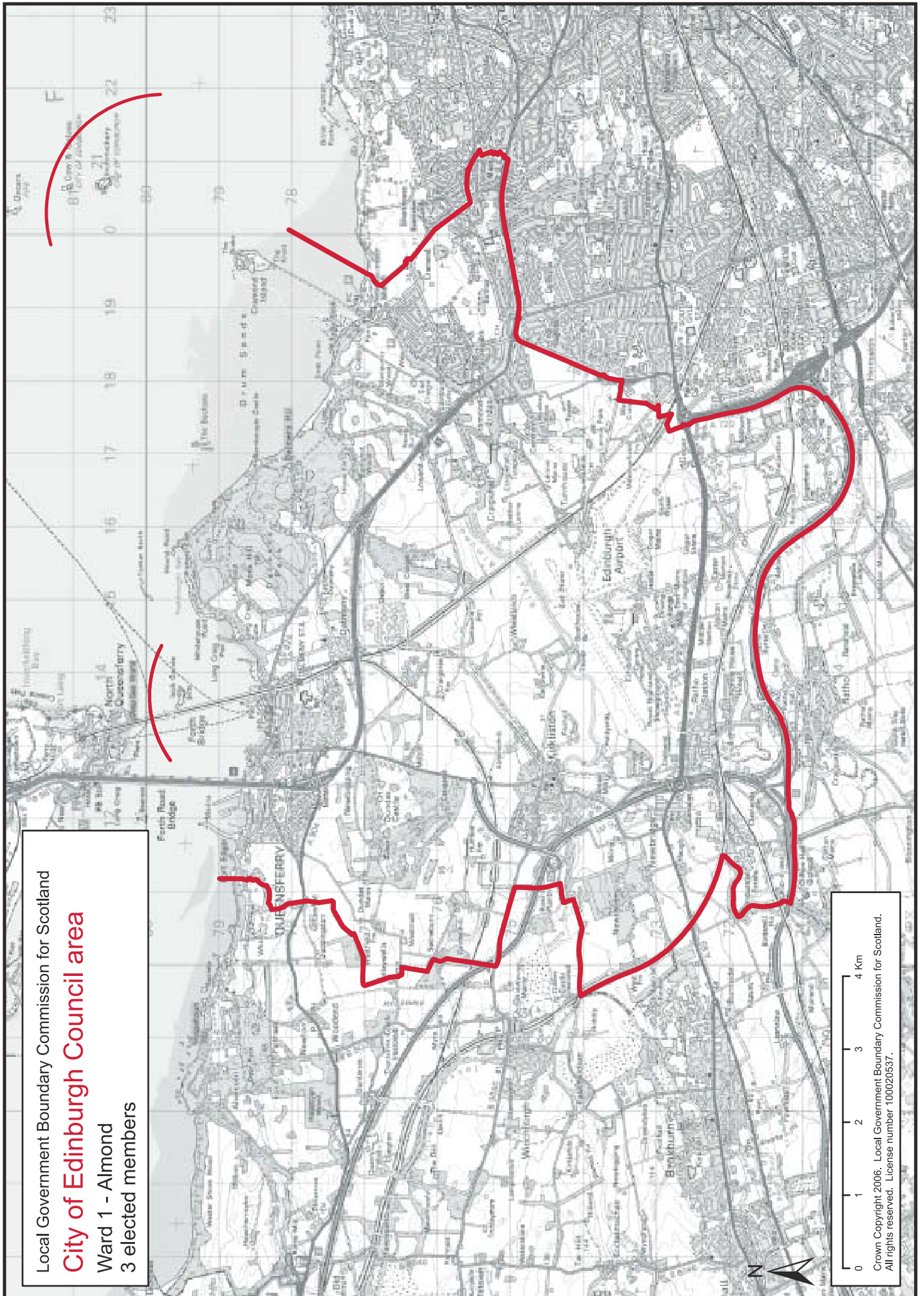
Ward 13 – Leith

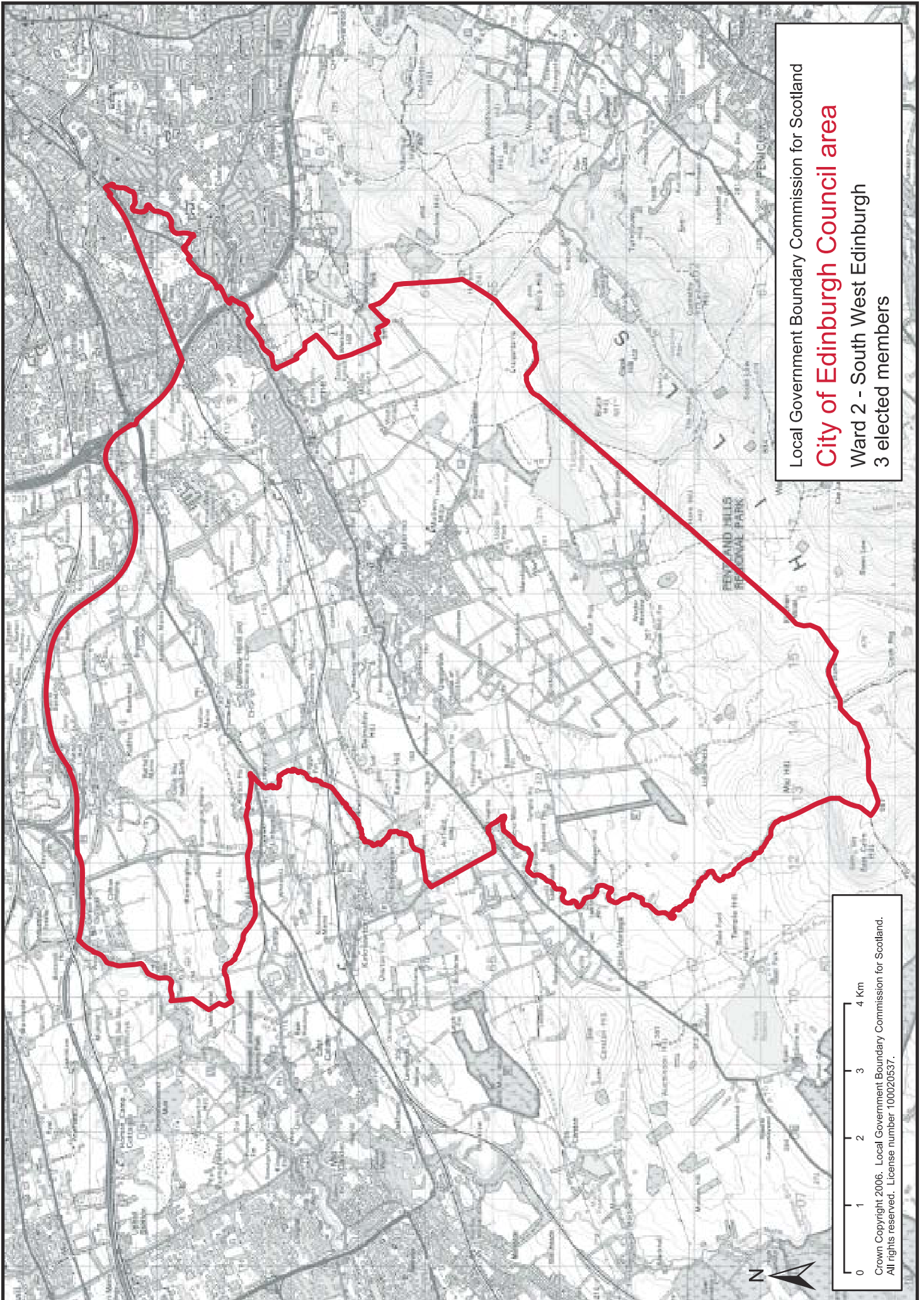
Ward 14 – Craigmillar and Duddingston

Ward 15 – Southside and Newington

Ward 16 – South East Edinburgh

Ward 17 – Craigmillar and Portobello



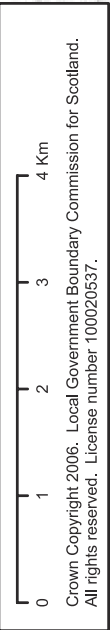


Local Government Boundary Commission for Scotland

**City of Edinburgh Council area**

Ward 2 - South West Edinburgh

3 elected members

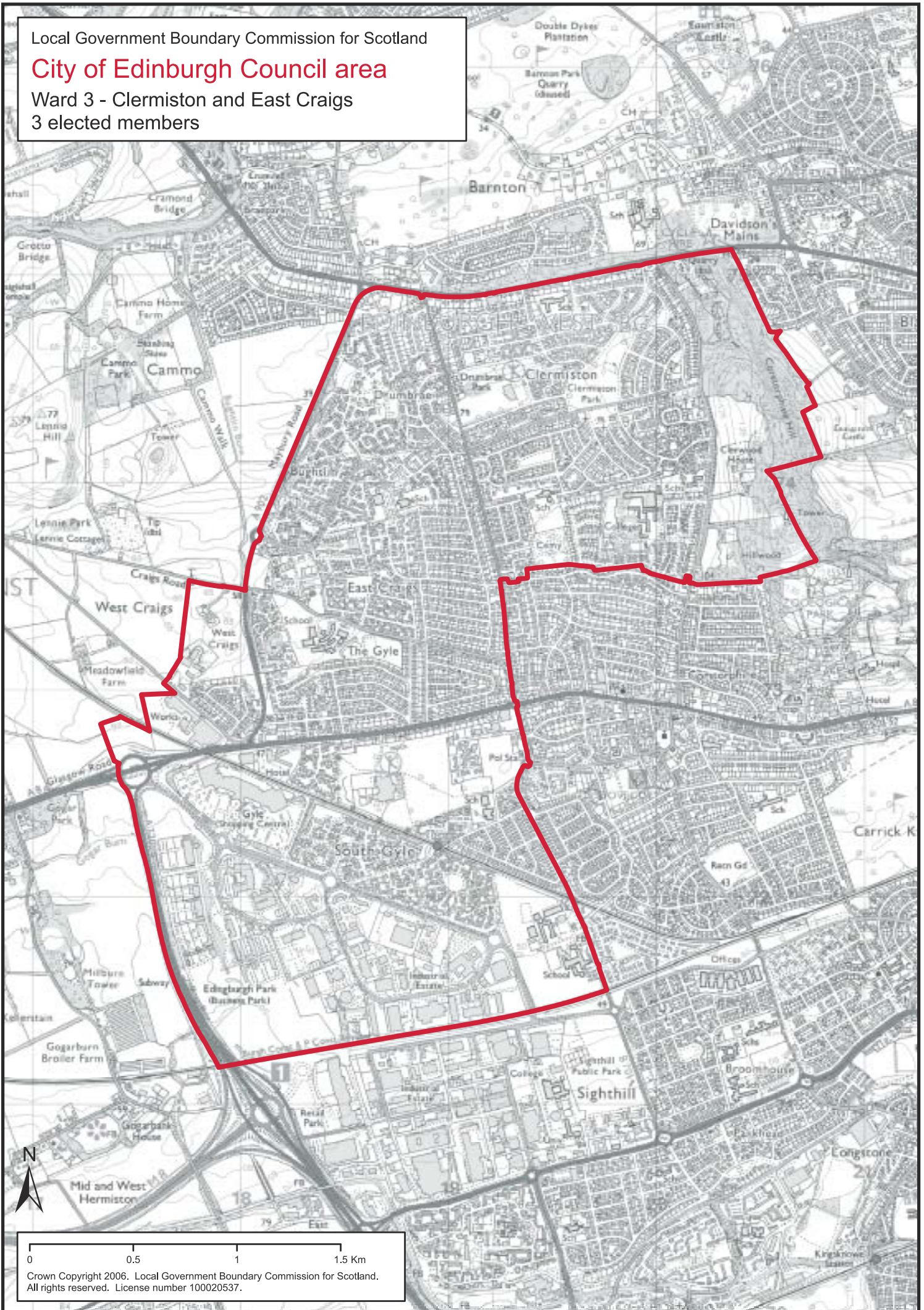


Local Government Boundary Commission for Scotland

## City of Edinburgh Council area

Ward 3 - Clermiston and East Craigs

3 elected members



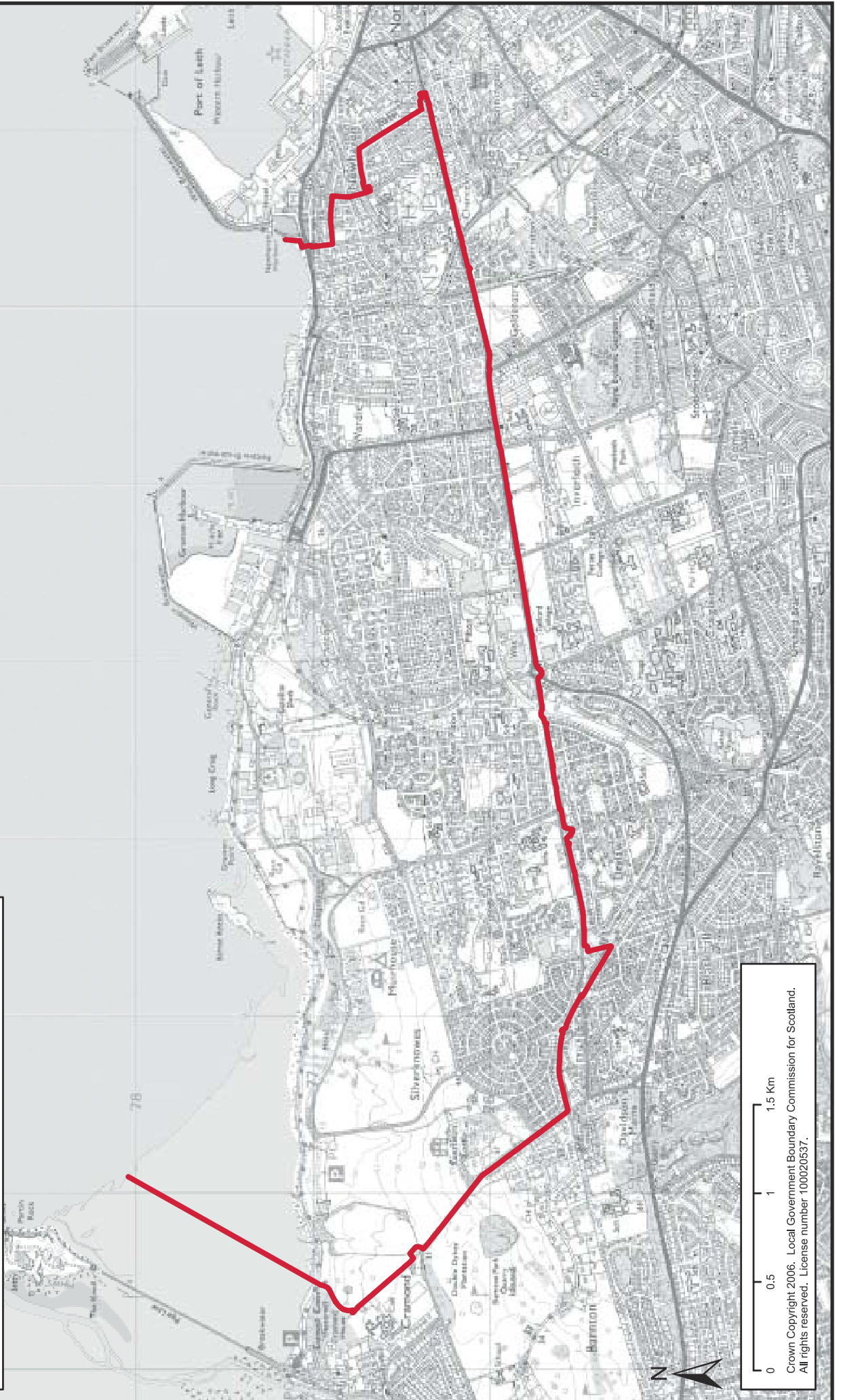
Crown Copyright 2006. Local Government Boundary Commission for Scotland. All rights reserved. License number 100020537.

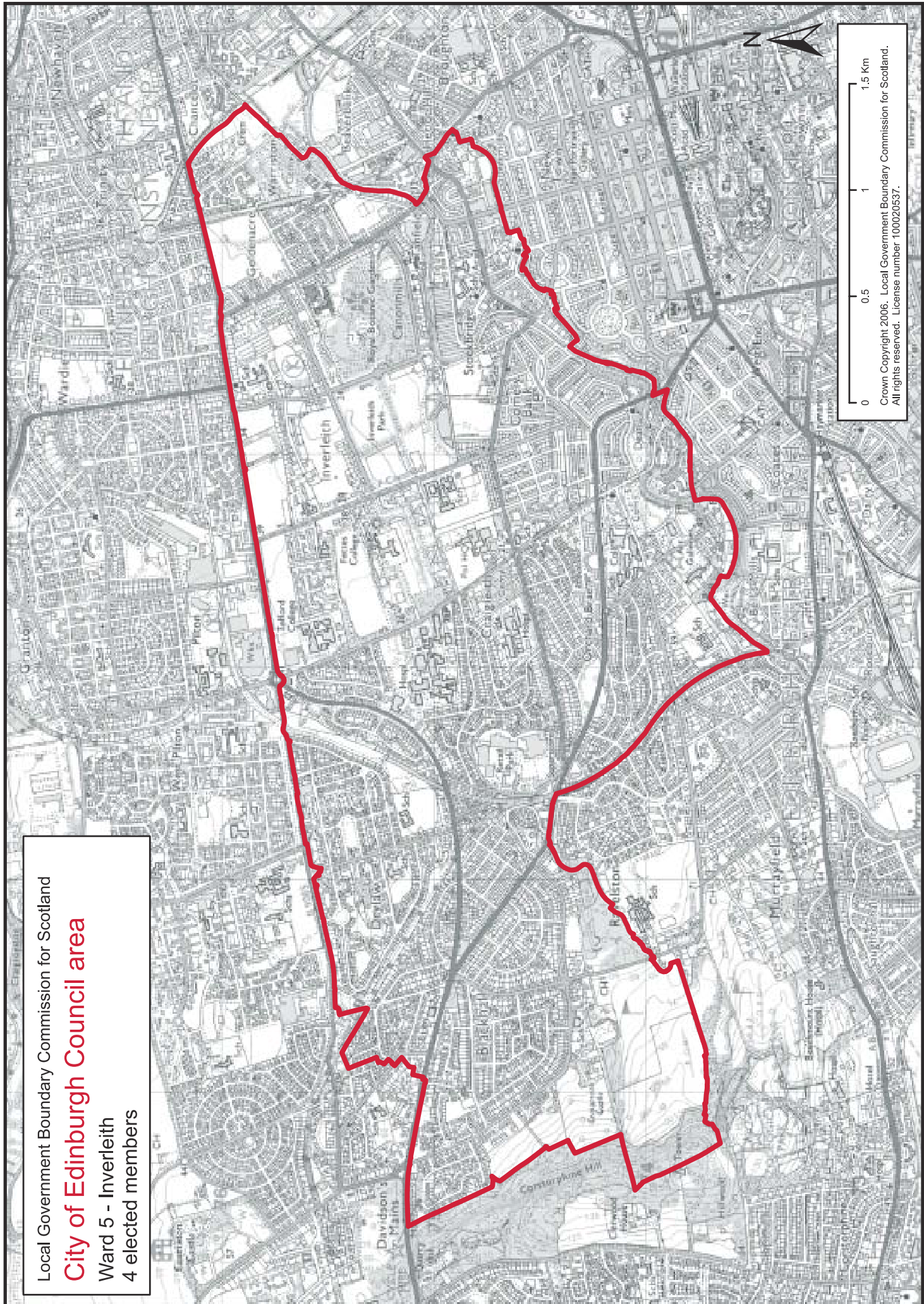
Local Government Boundary Commission for Scotland

## City of Edinburgh Council area

Ward 4 - Forth

4 elected members

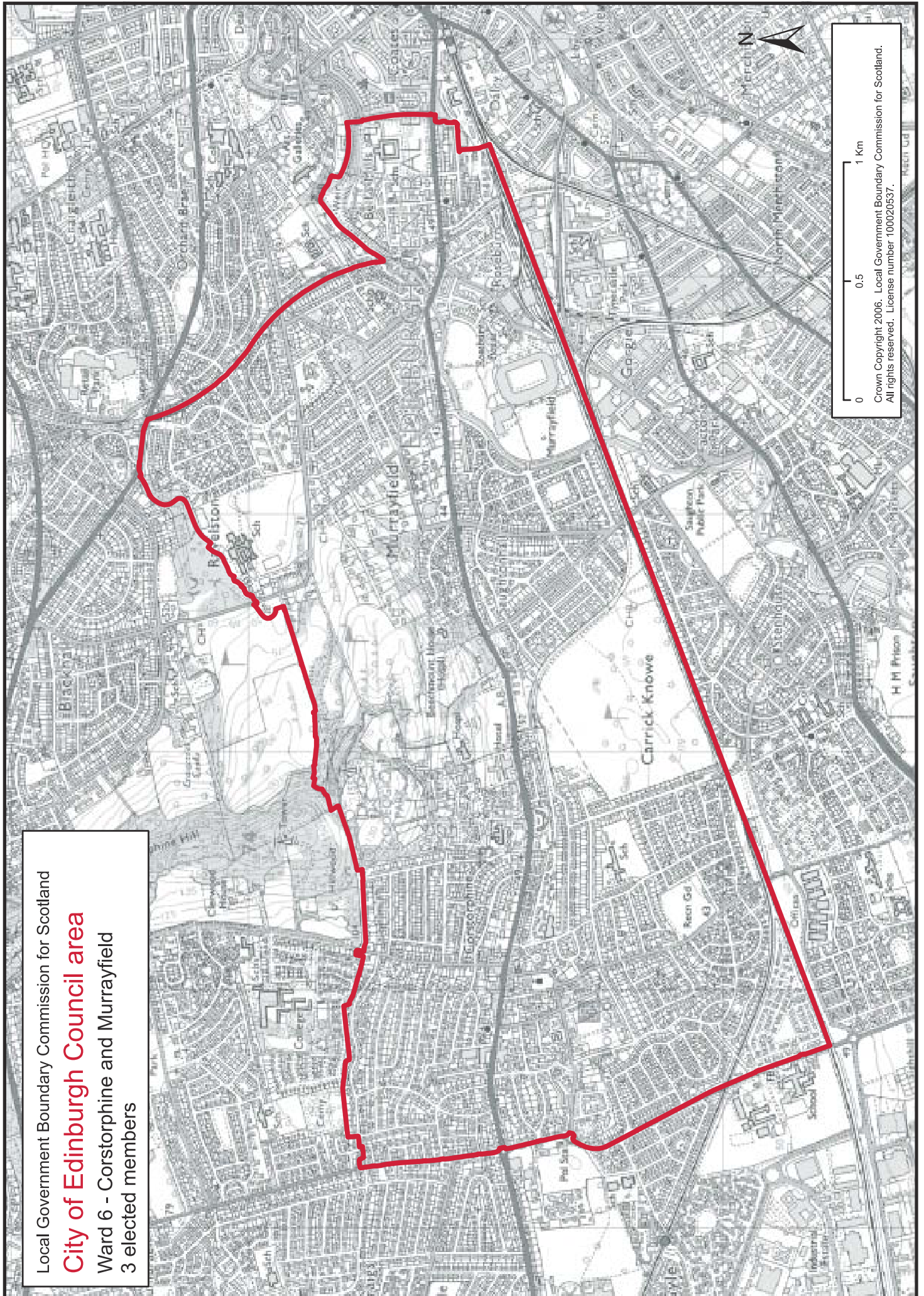




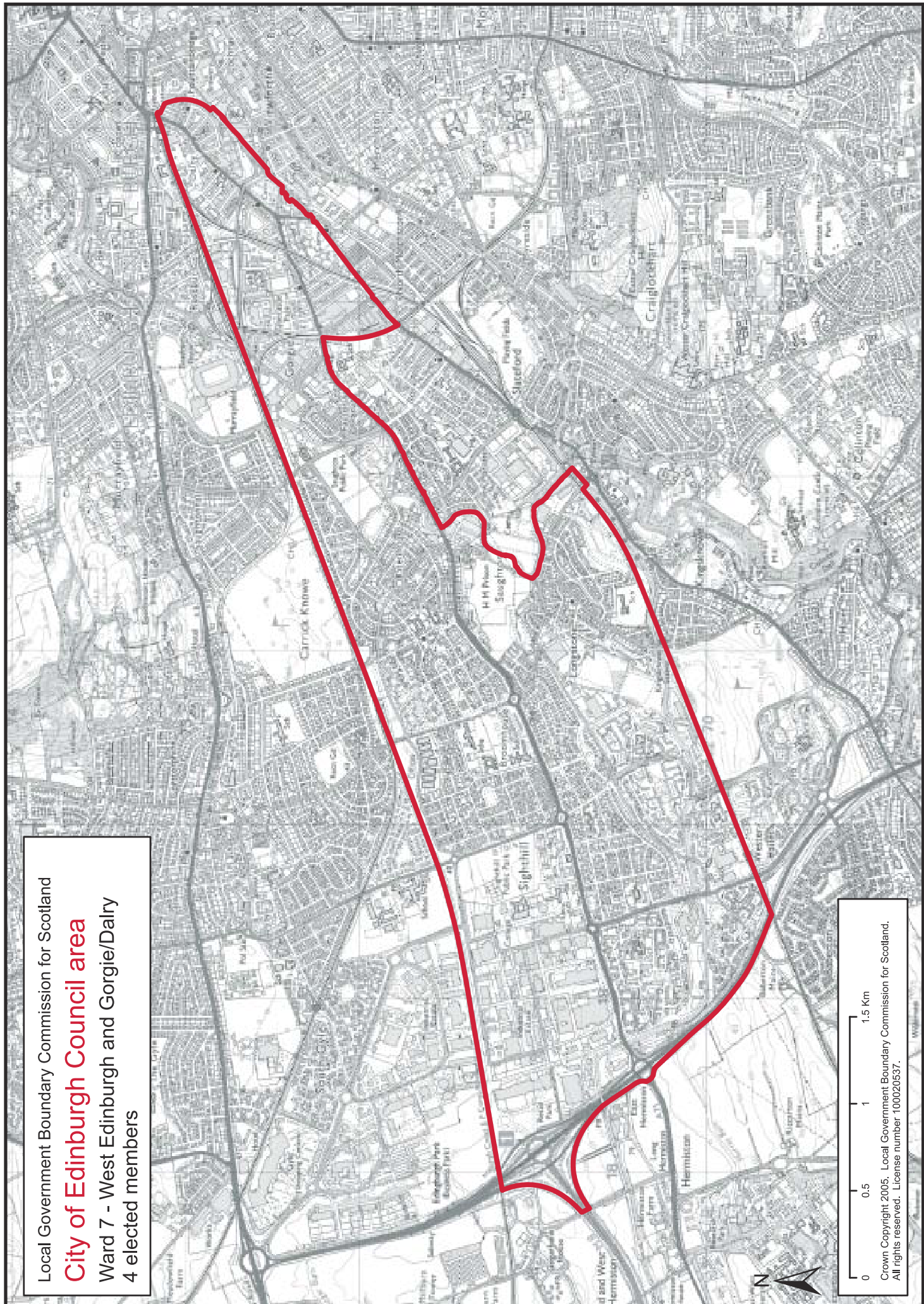
Local Government Boundary Commission for Scotland  
**City of Edinburgh Council area**  
 Ward 5 - Inverleith  
 4 elected members

0 0.5 1 1.5 Km  
 Crown Copyright 2006. Local Government Boundary Commission for Scotland.  
 All rights reserved. License number 100020537.

Local Government Boundary Commission for Scotland  
**City of Edinburgh Council area**  
Ward 6 - Corstorphine and Murrayfield  
3 elected members



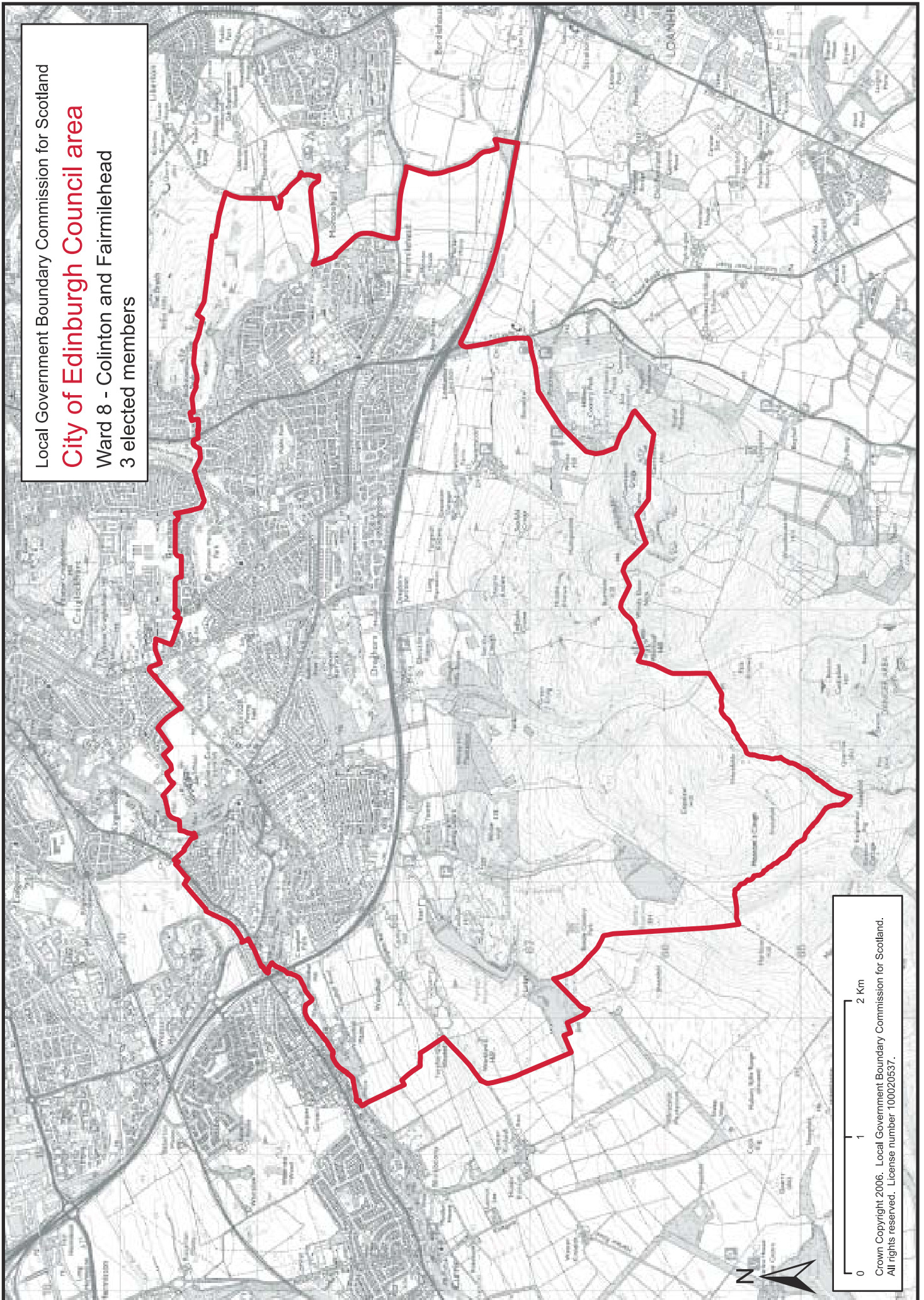
0 0.5 1 Km  
Crown Copyright 2006. Local Government Boundary Commission for Scotland.  
All rights reserved. License number 100020537.



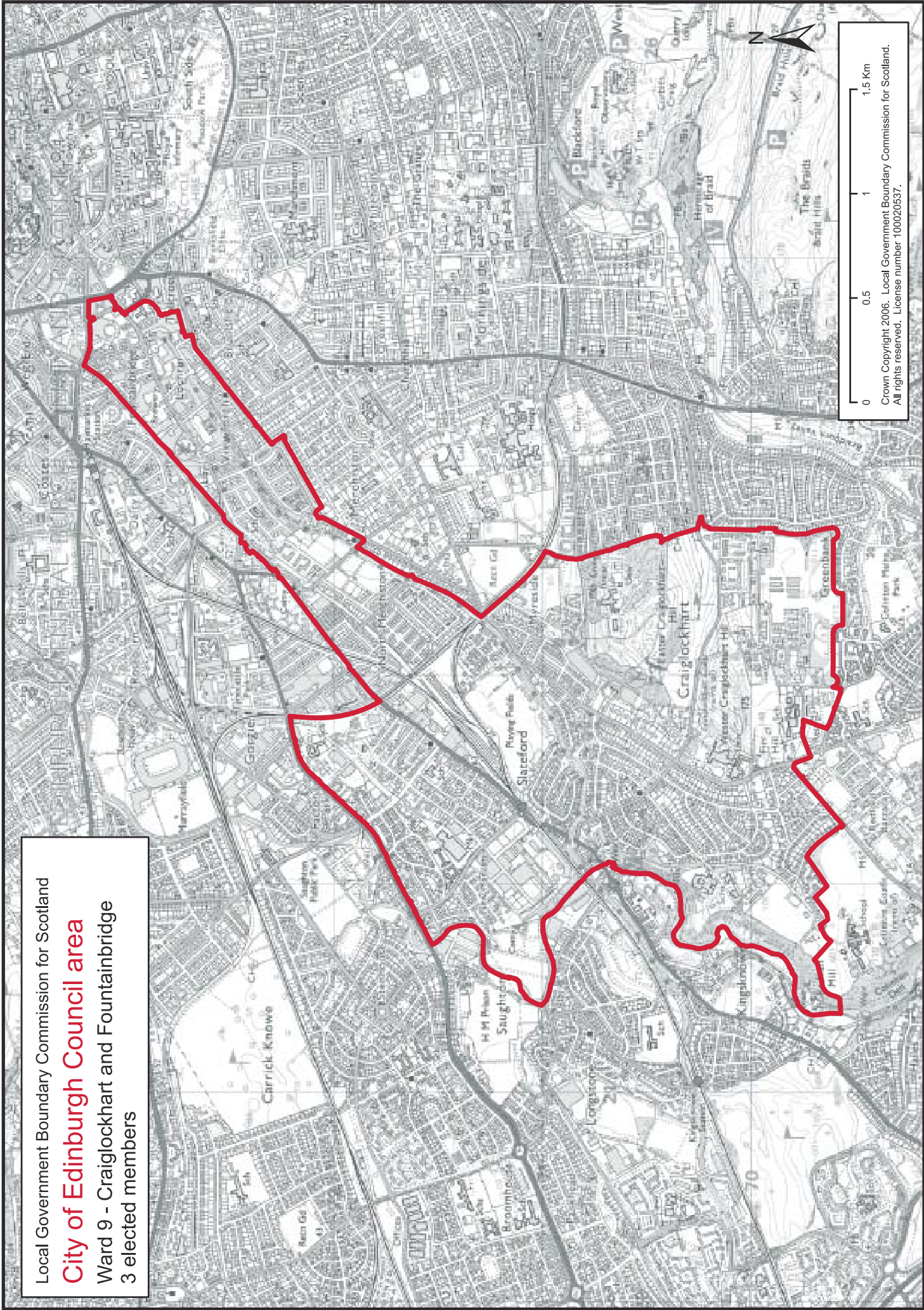
Local Government Boundary Commission for Scotland  
**City of Edinburgh Council area**  
 Ward 7 - West Edinburgh and Gorgie/Dalry  
 4 elected members

0 0.5 1 1.5 Km  
 Crown Copyright 2005. Local Government Boundary Commission for Scotland.  
 All rights reserved. License number 10020537.

Local Government Boundary Commission for Scotland  
**City of Edinburgh Council area**  
Ward 8 - Colinton and Fairmilehead  
3 elected members



0 1 2 Km  
Crown Copyright 2006. Local Government Boundary Commission for Scotland.  
All rights reserved. License number 100020537.

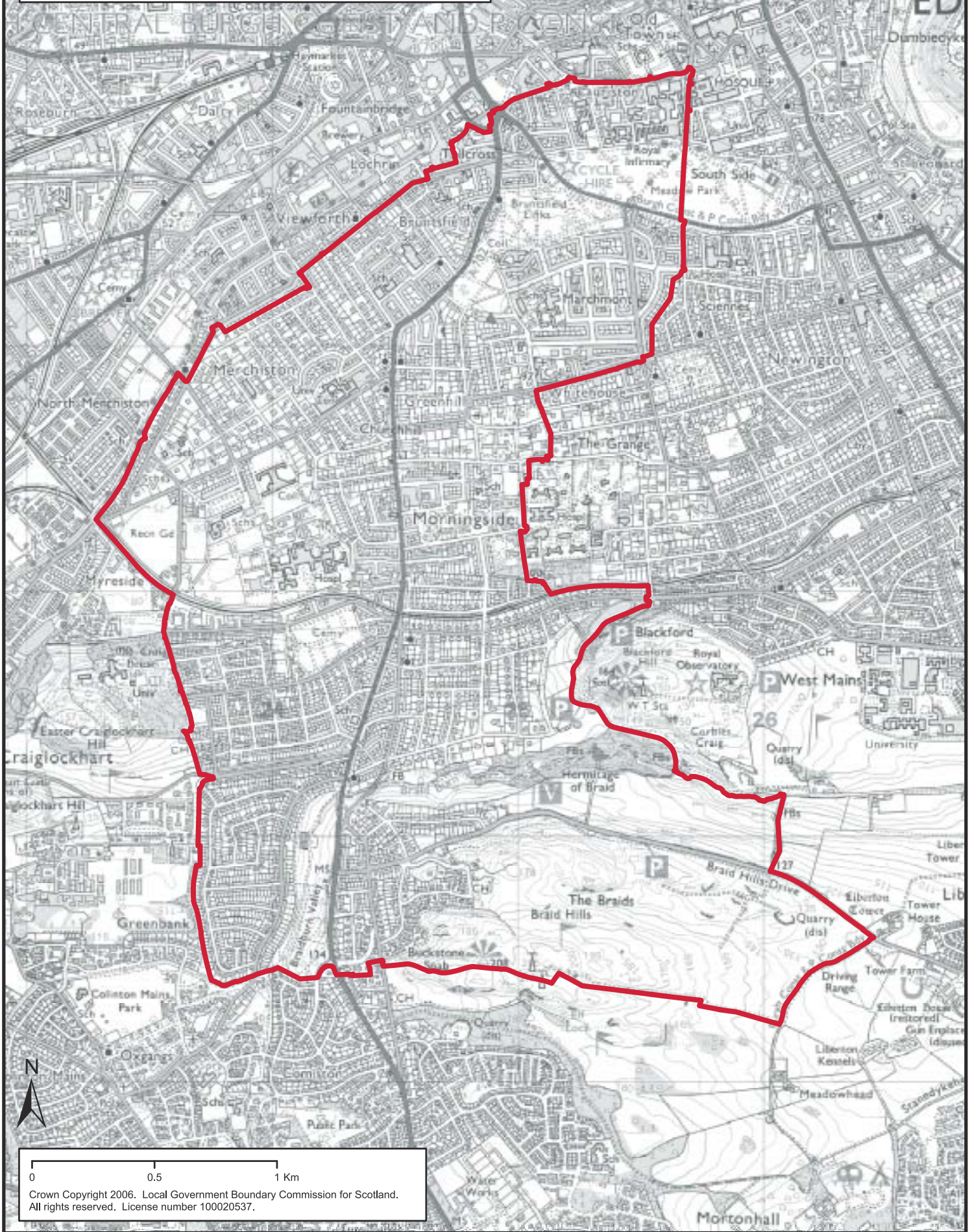


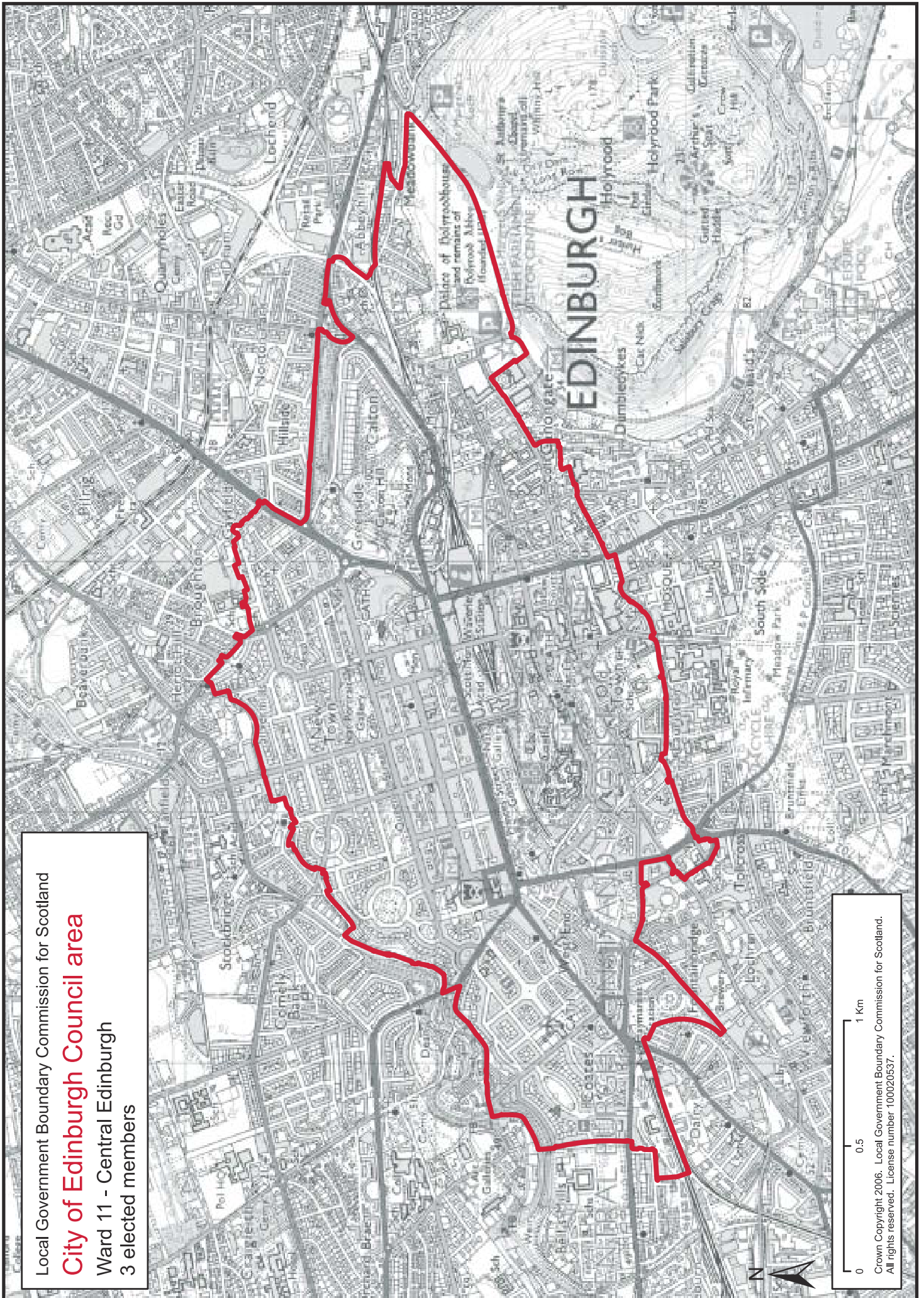
Local Government Boundary Commission for Scotland

## City of Edinburgh Council area

Ward 10 - Meadows and Morningside

4 elected members

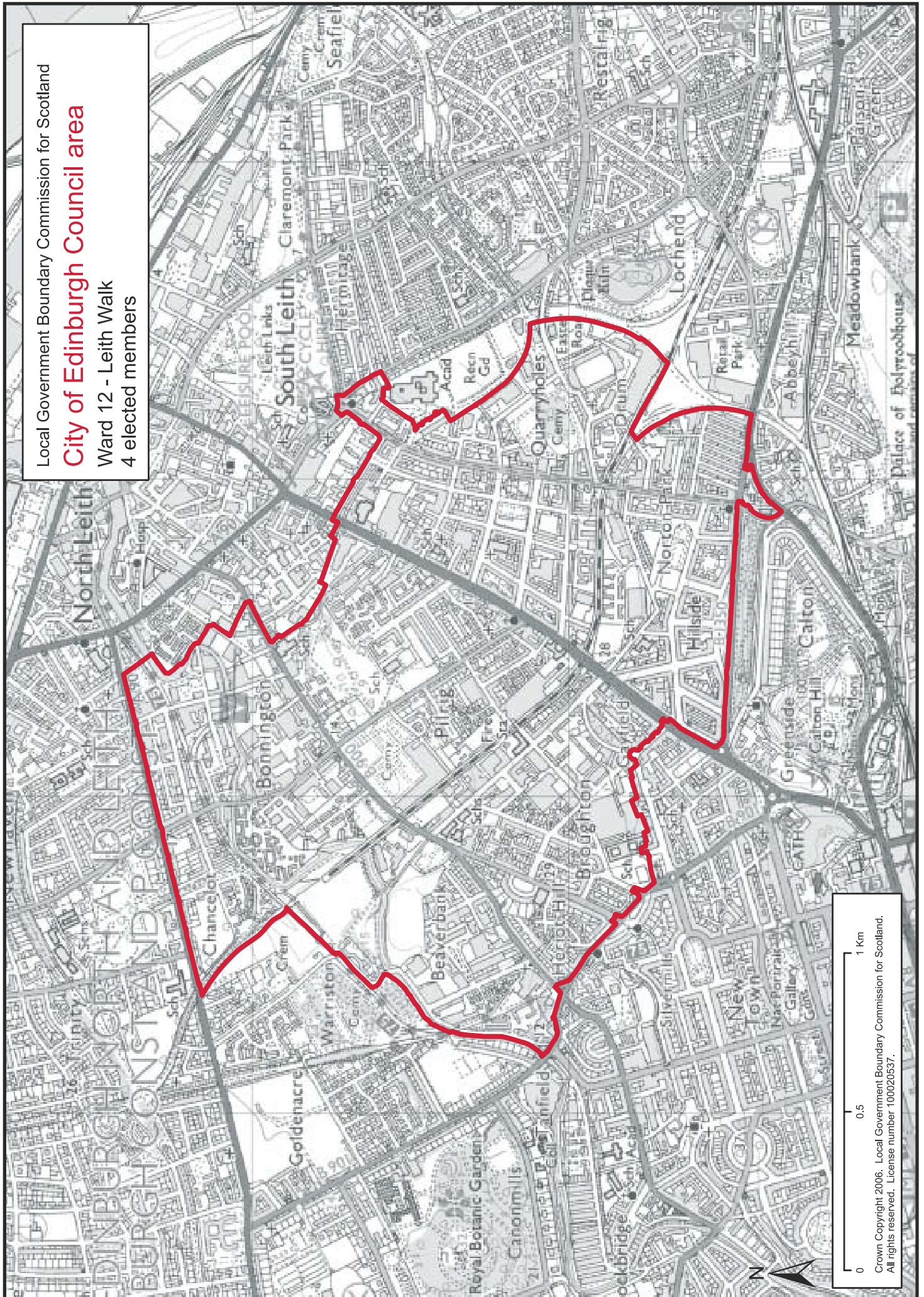




Local Government Boundary Commission for Scotland  
**City of Edinburgh Council area**  
 Ward 11 - Central Edinburgh  
 3 elected members

0 0.5 1 Km  
 Crown Copyright 2006. Local Government Boundary Commission for Scotland.  
 All rights reserved. License number 100020537.

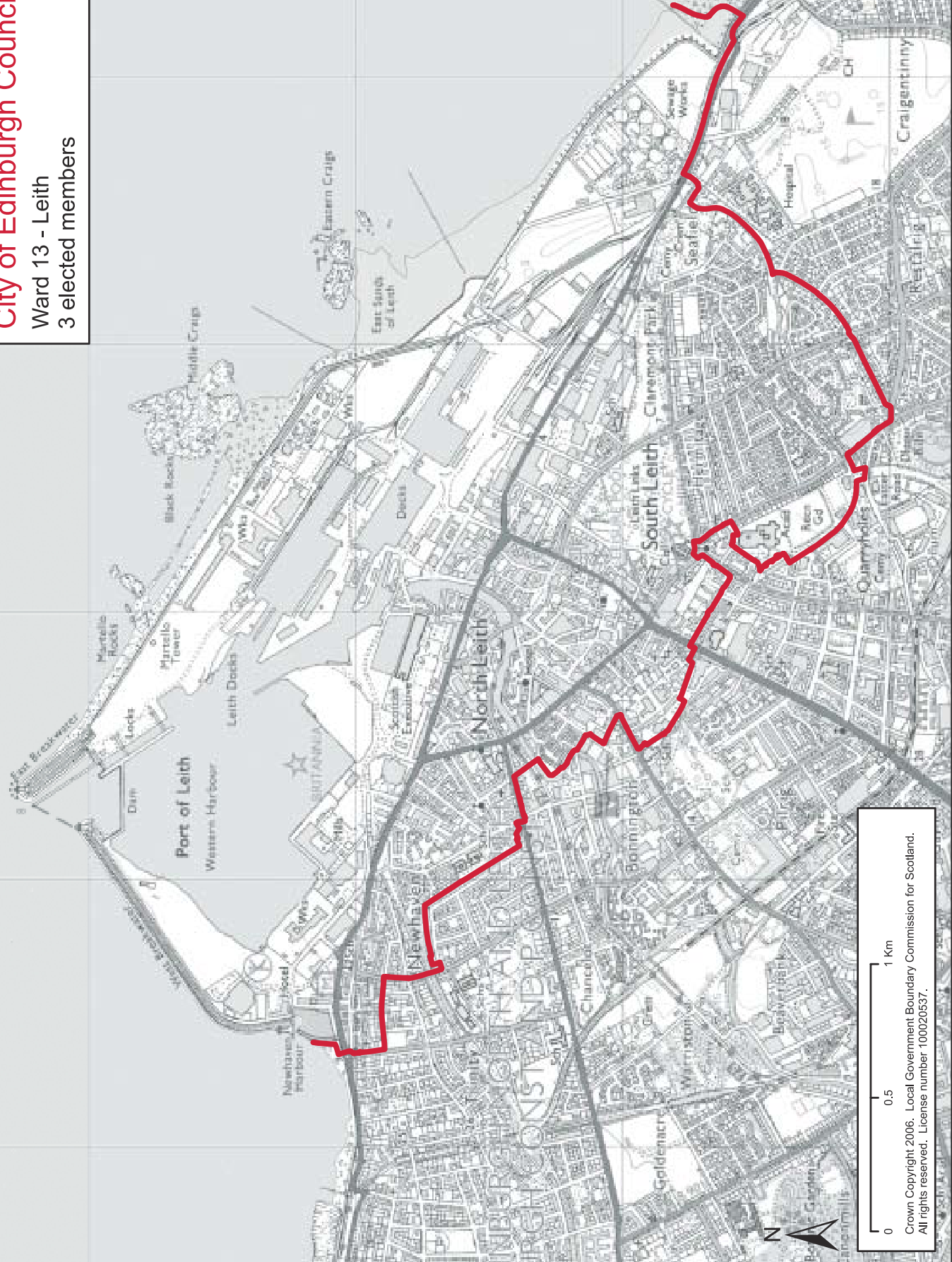
Local Government Boundary Commission for Scotland  
**City of Edinburgh Council area**  
Ward 12 - Leith Walk  
4 elected members



Local Government Boundary Commission for Scotland

# City of Edinburgh Council area

Ward 13 - Leith  
3 elected members

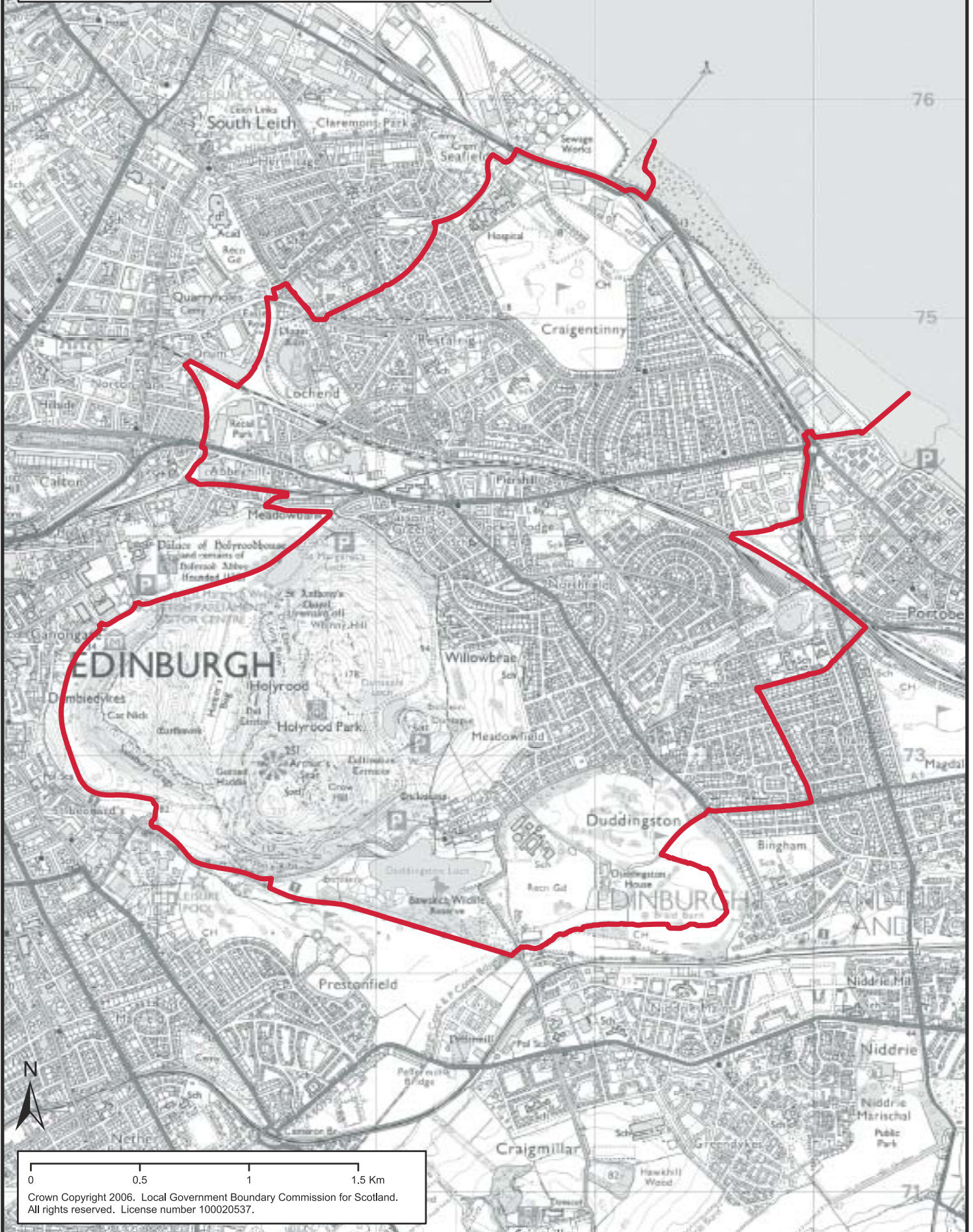


Local Government Boundary Commission for Scotland

## City of Edinburgh Council area

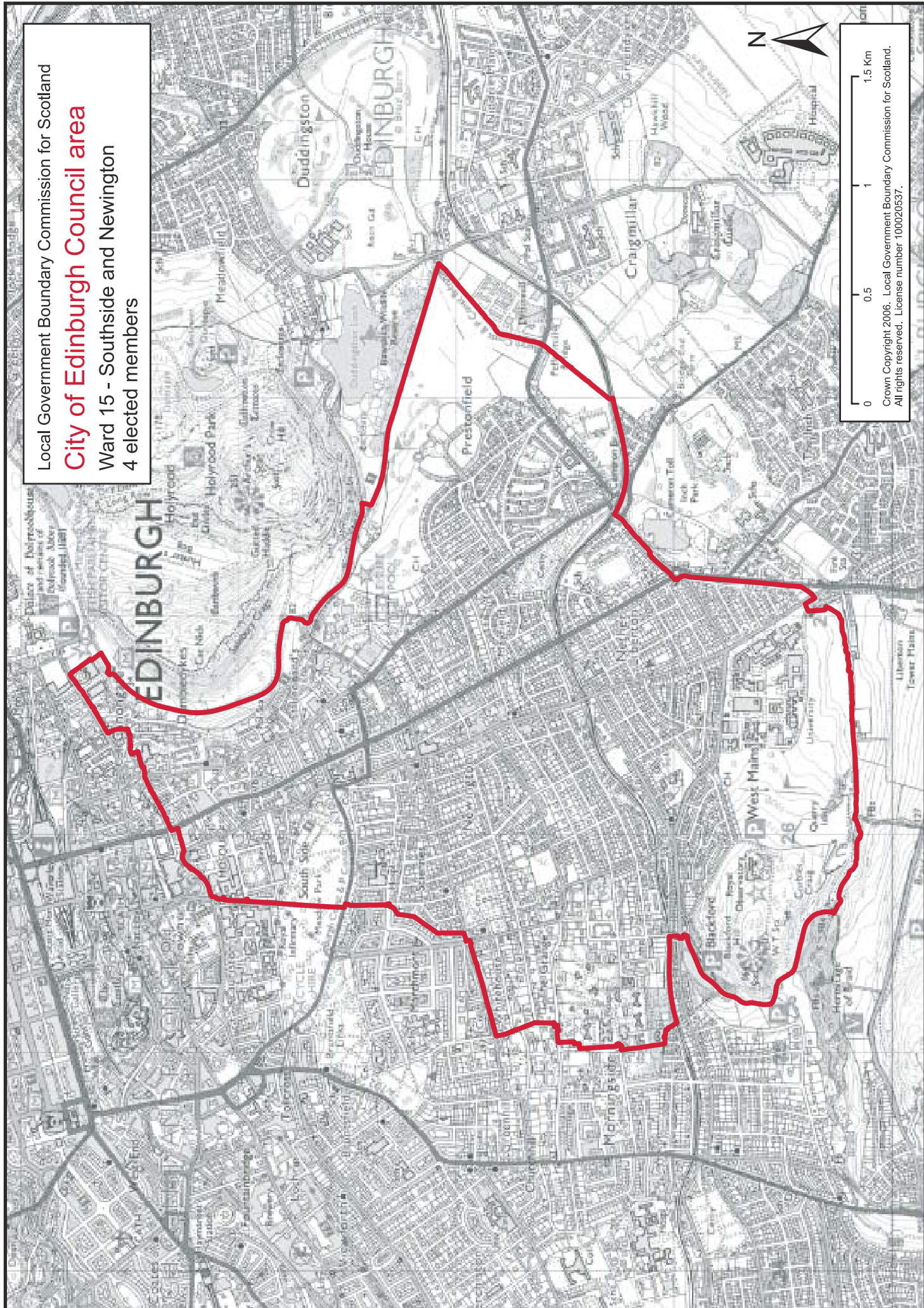
Ward 14 - Craigentenny and Duddingston

3 elected members

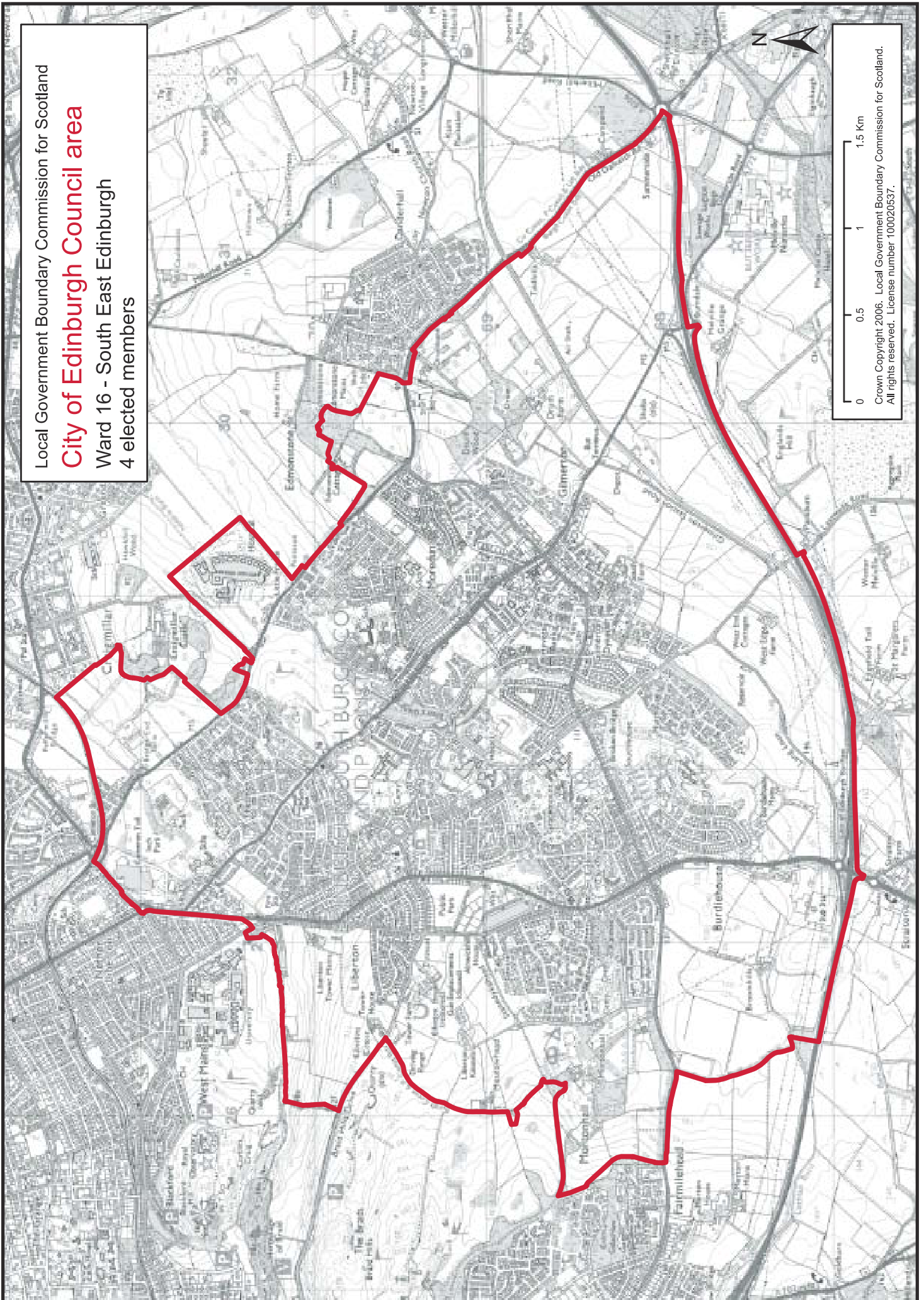


Crown Copyright 2006. Local Government Boundary Commission for Scotland.  
All rights reserved. License number 100020537.

Local Government Boundary Commission for Scotland  
**City of Edinburgh Council area**  
Ward 15 - Southside and Newington  
4 elected members



Local Government Boundary Commission for Scotland  
**City of Edinburgh Council area**  
Ward 16 - South East Edinburgh  
4 elected members



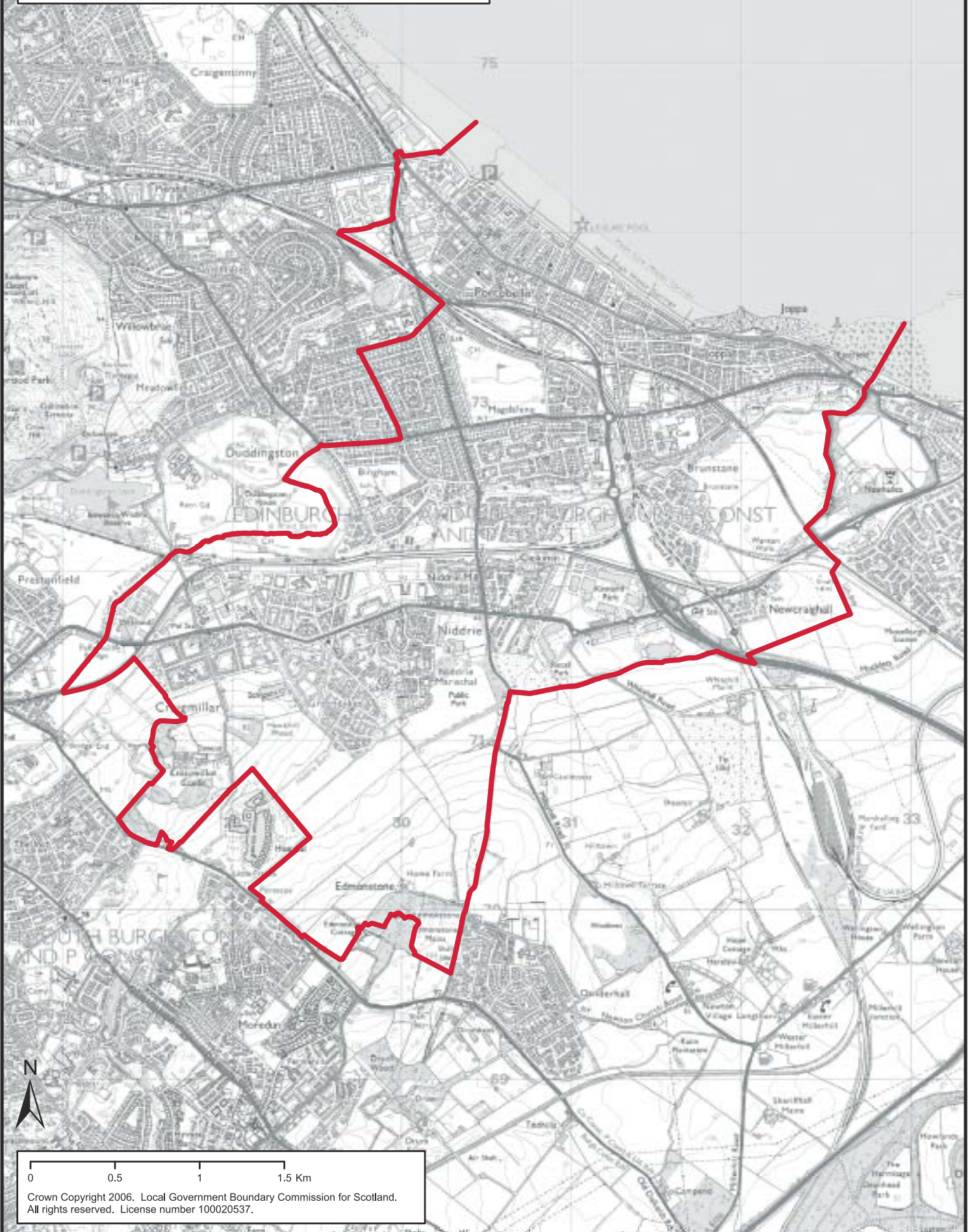
Crown Copyright 2006. Local Government Boundary Commission for Scotland.  
All rights reserved. License number 100020537.

Local Government Boundary Commission for Scotland

## City of Edinburgh Council area

Ward 17 - Craigmillar and Portobello

3 elected members



Crown Copyright 2006. Local Government Boundary Commission for Scotland.  
All rights reserved. License number 100020537.



