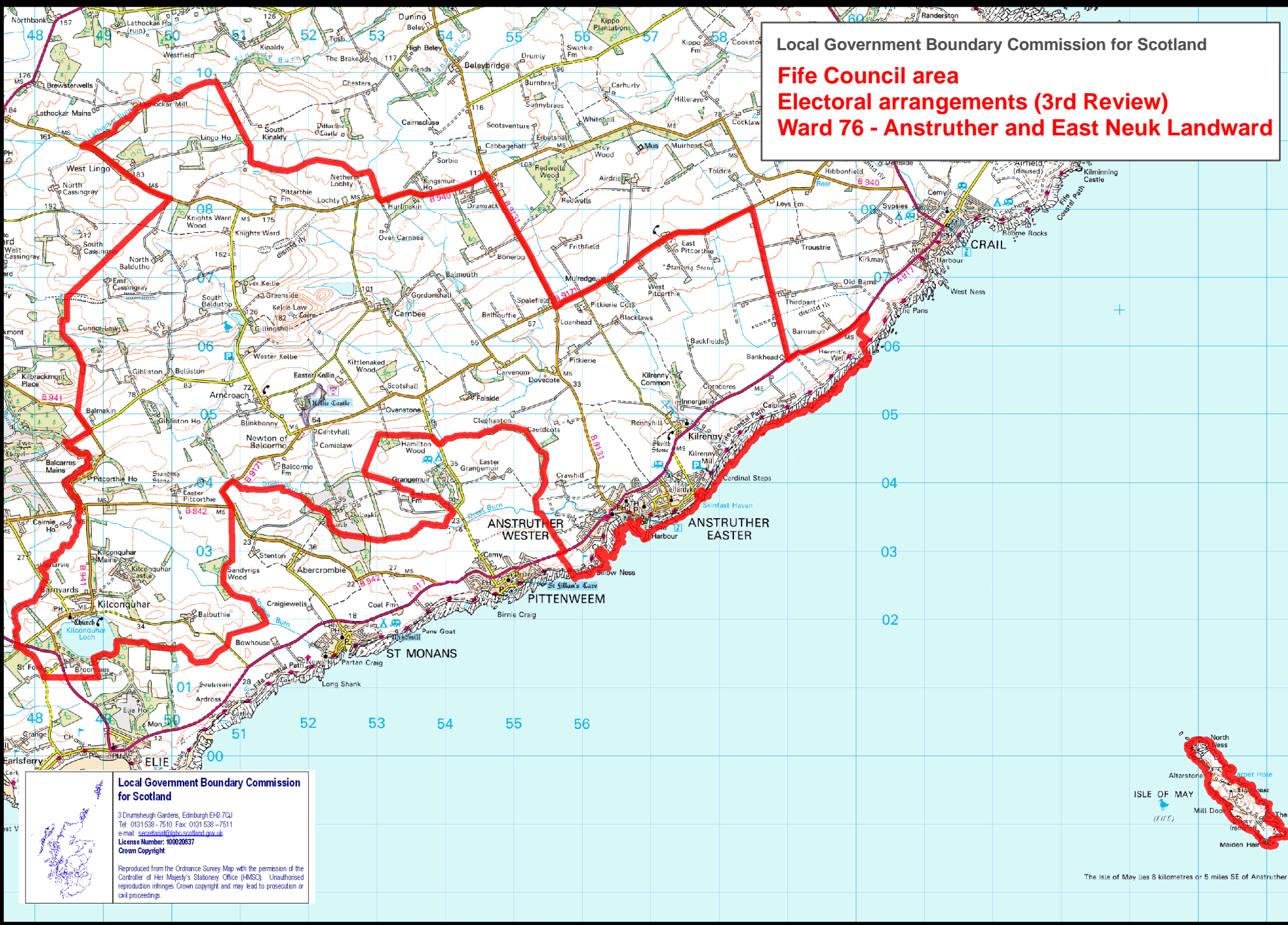


Local Government Boundary Commission for Scotland
Fife Council area
Electoral arrangements (3rd Review)
Ward 76 - Anstruther and East Neuk Landward



Local Government Boundary Commission for Scotland
 3 Drumshugh Gardens, Edinburgh EH8 7QJ
 Tel: 0131 538 - 7510 Fax: 0131 538 - 7511
 e-mail: secretariat@lgb-scotland.gov.uk
 License Number: 100020537
 Crown Copyright
 Reproduced from the Ordnance Survey Map with the permission of the Controller of Her Majesty's Stationery Office (HMCSO). Unauthorised reproduction infringes Crown copyright and may lead to prosecution or civil proceedings.

The Isle of May lies 8 kilometres or 5 miles SE of Anstruther Ea