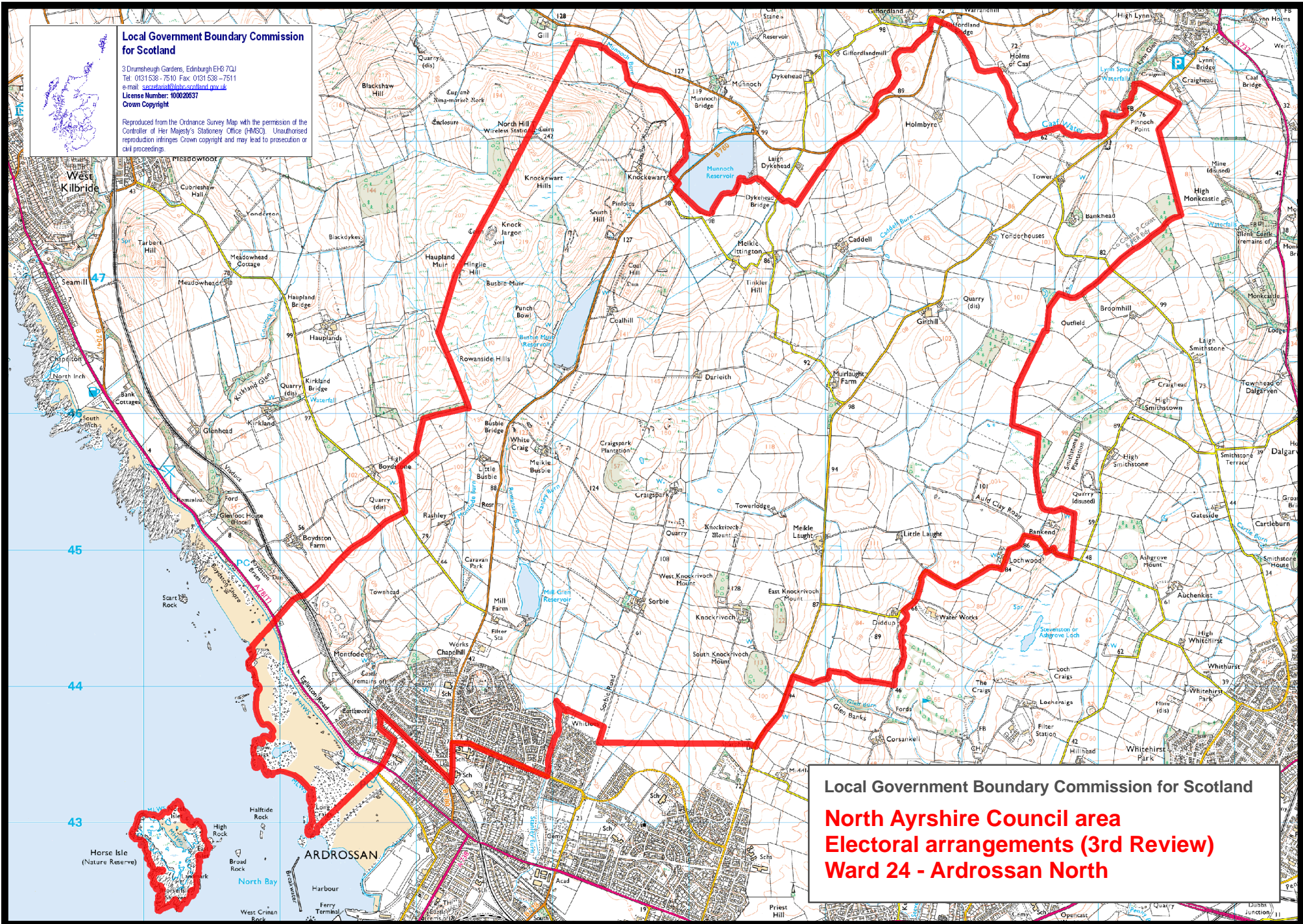


Local Government Boundary Commission for Scotland

3 Drumshugh Gardens, Edinburgh EH6 7GJ
Tel: 0131 538 - 7510 Fax: 0131 538 - 7511
e-mail: scotland@lgbcs.scot.nhs.uk
License Number: 400020637
Crown Copyright

Reproduced from the Ordnance Survey Map with the permission of the Controller of Her Majesty's Stationery Office (HMSO). Unauthorised reproduction infringes Crown copyright and may lead to prosecution or civil proceedings.

Local Government Boundary Commission for Scotland
North Ayrshire Council area
Electoral arrangements (3rd Review)
Ward 24 - Ardrossan North



45

44

43

Horse Isle (Nature Reserve)

ARDROSSAN

North Bay

Harbour

Ferry Terminal

West Crinan Road

Halfide Rock

Broad Rock

High Rock

High Crinan

High Crinan

High Crinan

High Crinan

High Crinan

High Crinan

High Crinan

High Crinan

High Crinan

High Crinan

High Crinan

High Crinan

High Crinan

High Crinan

High Crinan

High Crinan

High Crinan

High Crinan

High Crinan

High Crinan

High Crinan

High Crinan

High Crinan

High Crinan

High Crinan

High Crinan

High Crinan

High Crinan

High Crinan

High Crinan

High Crinan

High Crinan

High Crinan

High Crinan

High Crinan

High Crinan

High Crinan

High Crinan

High Crinan

High Crinan

High Crinan

High Crinan

High Crinan

High Crinan

High Crinan

High Crinan

High Crinan

High Crinan

High Crinan

High Crinan

High Crinan

High Crinan

High Crinan

High Crinan

High Crinan

High Crinan

High Crinan

High Crinan

High Crinan

High Crinan

High Crinan

High Crinan

High Crinan

High Crinan

High Crinan

High Crinan

High Crinan

High Crinan

High Crinan

High Crinan

High Crinan

High Crinan

High Crinan

High Crinan

High Crinan

High Crinan

High Crinan

High Crinan

High Crinan

High Crinan

High Crinan

High Crinan

High Crinan

High Crinan

High Crinan

High Crinan

High Crinan

High Crinan

High Crinan

High Crinan

High Crinan

High Crinan

High Crinan

High Crinan

High Crinan

High Crinan

High Crinan

High Crinan

High Crinan

High Crinan

High Crinan

High Crinan

High Crinan

High Crinan

High Crinan

High Crinan

High Crinan

High Crinan

High Crinan

High Crinan

High Crinan

High Crinan

High Crinan

High Crinan

High Crinan

High Crinan

High Crinan

High Crinan

High Crinan

High Crinan

High Crinan

High Crinan

High Crinan

High Crinan

High Crinan

High Crinan

High Crinan

High Crinan

High Crinan

High Crinan

High Crinan

High Crinan

High Crinan

High Crinan

High Crinan

High Crinan

High Crinan

High Crinan

High Crinan

High Crinan

High Crinan

High Crinan

High Crinan

High Crinan

High Crinan

High Crinan

High Crinan

High Crinan

High Crinan

High Crinan

High Crinan

High Crinan

High Crinan

High Crinan

High Crinan

High Crinan

High Crinan

High Crinan

High Crinan

High Crinan

High Crinan

High Crinan

High Crinan

High Crinan

High Crinan

High Crinan

High Crinan

High Crinan

High Crinan

High Crinan

High Crinan

High Crinan

High Crinan

High Crinan

High Crinan

High Crinan

High Crinan

High Crinan

High Crinan

High Crinan

High Crinan

High Crinan

High Crinan

High Crinan

High Crinan

High Crinan

High Crinan

High Crinan

High Crinan

High Crinan

High Crinan

High Crinan

High Crinan

High Crinan

High Crinan

High Crinan

High Crinan

High Crinan

High Crinan

High Crinan

High Crinan

High Crinan

High Crinan

High Crinan

High Crinan

High Crinan

High Crinan

High Crinan

High Crinan

High Crinan

High Crinan

High Crinan

High Crinan

High Crinan

High Crinan

High Crinan

High Crinan

High Crinan

High Crinan

High Crinan

High Crinan

High Crinan

High Crinan

High Crinan

High Crinan

High Crinan

High Crinan

High Crinan

High Crinan

High Crinan

High Crinan

High Crinan

High Crinan

High Crinan

High Crinan

High Crinan

High Crinan

High Crinan

High Crinan

High Crinan

High Crinan

High Crinan

High Crinan

High Crinan

High Crinan

High Crinan

High Crinan

High Crinan

High Crinan

High Crinan

High Crinan

High Crinan

High Crinan

High Crinan

High Crinan

High Crinan

High Crinan

High Crinan

High Crinan

High Crinan

High Crinan

High Crinan

High Crinan

High Crinan

High Crinan

High Crinan

High Crinan

High Crinan

High Crinan

High Crinan

High Crinan

High Crinan

High Crinan

High Crinan

High Crinan

High Crinan

High Crinan

High Crinan

High Crinan

High Crinan

High Crinan

High Crinan

High Crinan

High Crinan

High Crinan

High Crinan

High Crinan

High Crinan

High Crinan

High Crinan

High Crinan

High Crinan

High Crinan

High Crinan

High Crinan

High Crinan

High Crinan

High Crinan

High Crinan

High Crinan

High Crinan

High Crinan