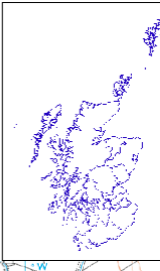
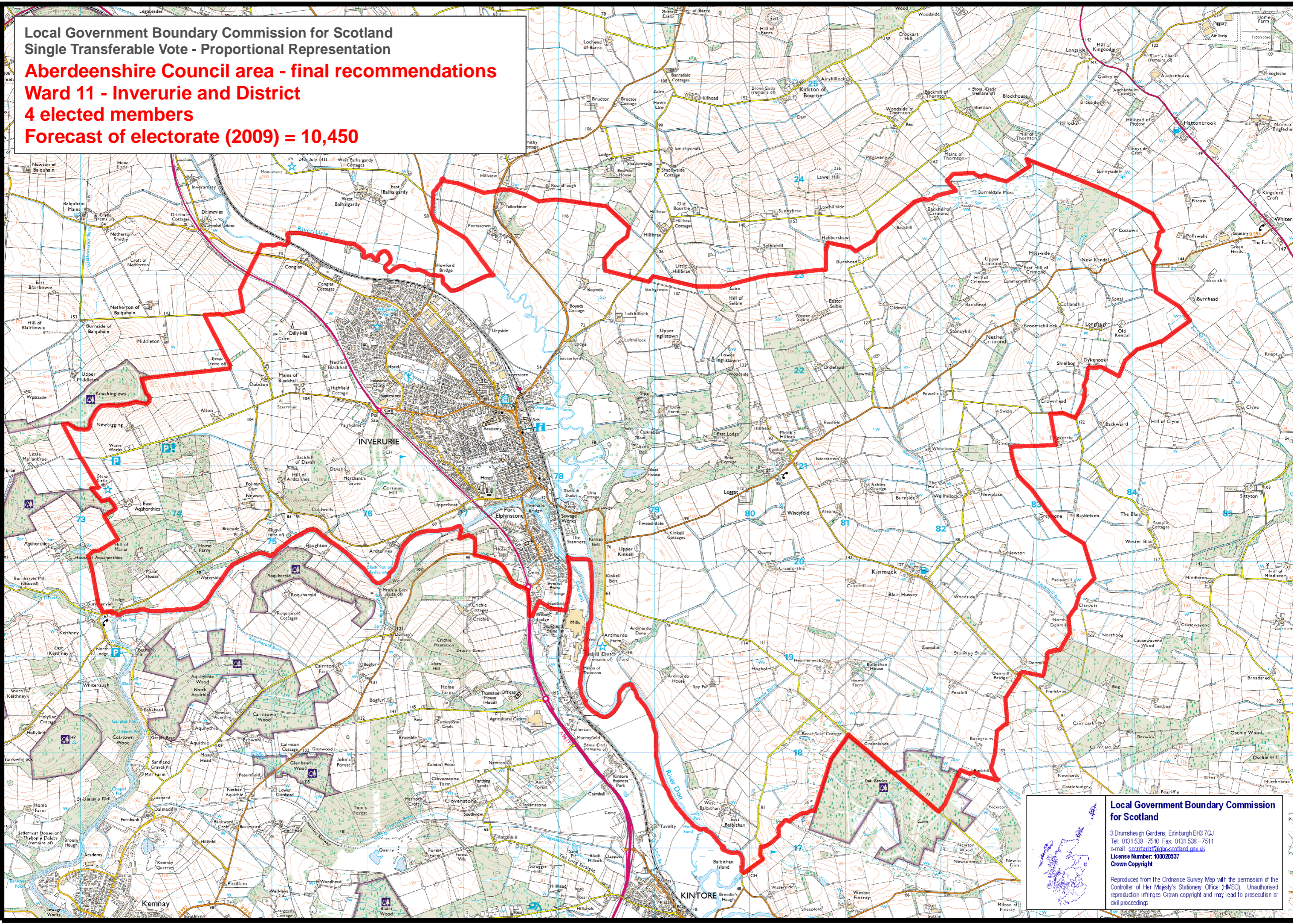


Local Government Boundary Commission for Scotland  
Single Transferable Vote - Proportional Representation  
**Aberdeenshire Council area - final recommendations**  
**Ward 11 - Inverurie and District**  
**4 elected members**  
**Forecast of electorate (2009) = 10,450**



**Local Government Boundary Commission for Scotland**  
3 Drumshugh Gardens, Edinburgh EH3 7QJ  
Tel: 0131 538 - 7510 Fax: 0131 538 - 7511  
e-mail: [serv@lgbcs.scot.nhs.uk](mailto:serv@lgbcs.scot.nhs.uk)  
License Number: 100020537  
Crown Copyright  
Reproduced from the Ordnance Survey Map with the permission of the Controller of Her Majesty's Stationery Office (HMSO). Unauthorised reproduction infringes Crown copyright and may lead to prosecution or civil proceedings.