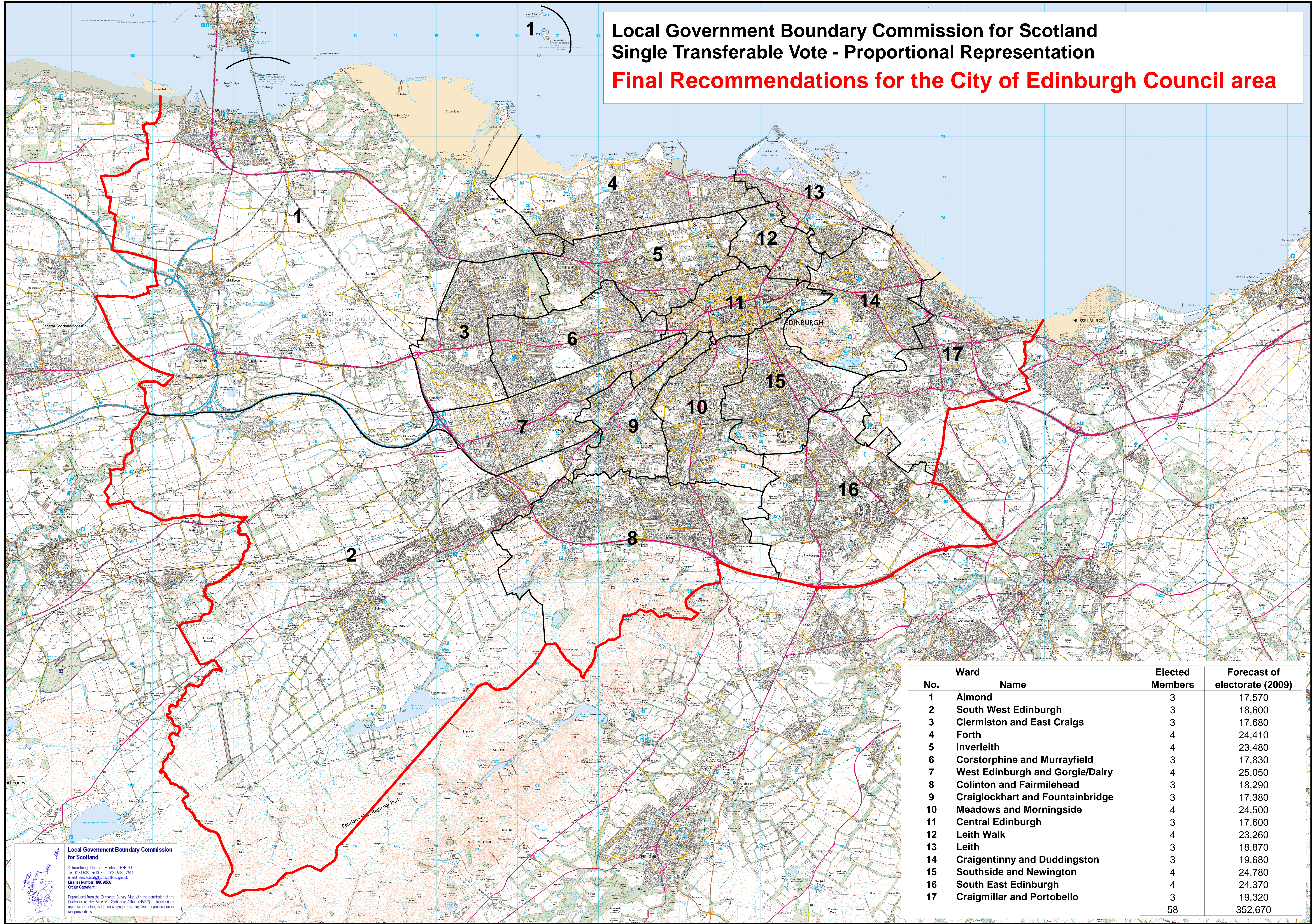


Local Government Boundary Commission for Scotland Single Transferable Vote - Proportional Representation Final Recommendations for the City of Edinburgh Council area



No.	Ward Name	Elected Members	Forecast of electorate (2009)
1	Almond	3	17,570
2	South West Edinburgh	3	18,600
3	Clermiston and East Craigs	3	17,680
4	Forth	4	24,410
5	Inverleith	4	23,480
6	Corstorphine and Murrayfield	3	17,830
7	West Edinburgh and Gorgie/Dalry	4	25,050
8	Colinton and Fairmilehead	3	18,290
9	Craiglockhart and Fountainbridge	3	17,380
10	Meadows and Morningside	4	24,500
11	Central Edinburgh	3	17,600
12	Leith Walk	4	23,260
13	Leith	3	18,870
14	Craigentinny and Duddingston	3	19,680
15	Southside and Newington	4	24,780
16	South East Edinburgh	4	24,370
17	Craigmillar and Portobello	3	19,320
		58	352,670

Local Government Boundary Commission for Scotland
 3 Drumehugh Gardens, Edinburgh EH4 7QJ
 Tel: 0131 538 7510 Fax: 0131 538 7511
 e-mail: scotland@lgbcotland.gov.uk
 License Number: 100020037
 Crown Copyright
 Reproduced from the Ordnance Survey Map with the permission of the Controller of Her Majesty's Stationery Office (HMSO). Unauthorised reproduction infringes Crown copyright and may lead to prosecution or civil proceedings.