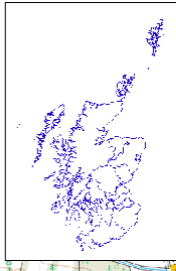
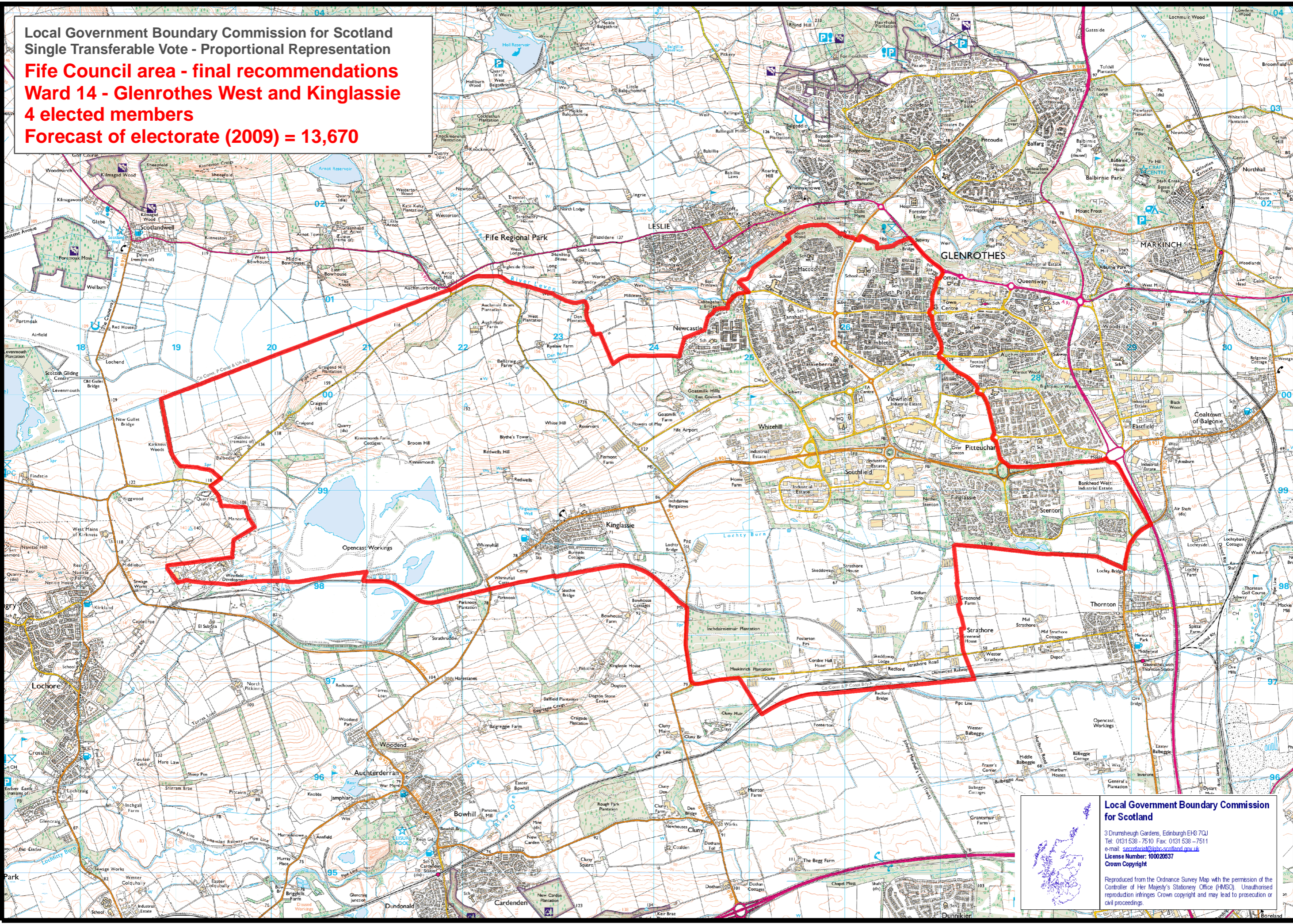


Local Government Boundary Commission for Scotland  
Single Transferable Vote - Proportional Representation  
**Fife Council area - final recommendations**  
**Ward 14 - Glenrothes West and Kinglassie**  
**4 elected members**  
**Forecast of electorate (2009) = 13,670**



**Local Government Boundary Commission for Scotland**  
3 Drumsheugh Gardens, Edinburgh EH3 7JQ  
Tel: 0131 538 7510 Fax: 0131 538 7511  
e-mail: [secretary@lgbc-scotland.gov.uk](mailto:secretary@lgbc-scotland.gov.uk)  
License Number: 100020537  
Crown Copyright  
Reproduced from the Ordnance Survey Map with the permission of the Controller of Her Majesty's Stationery Office (HMSO). Unauthorised reproduction infringes Crown copyright and may lead to prosecution or civil proceedings.