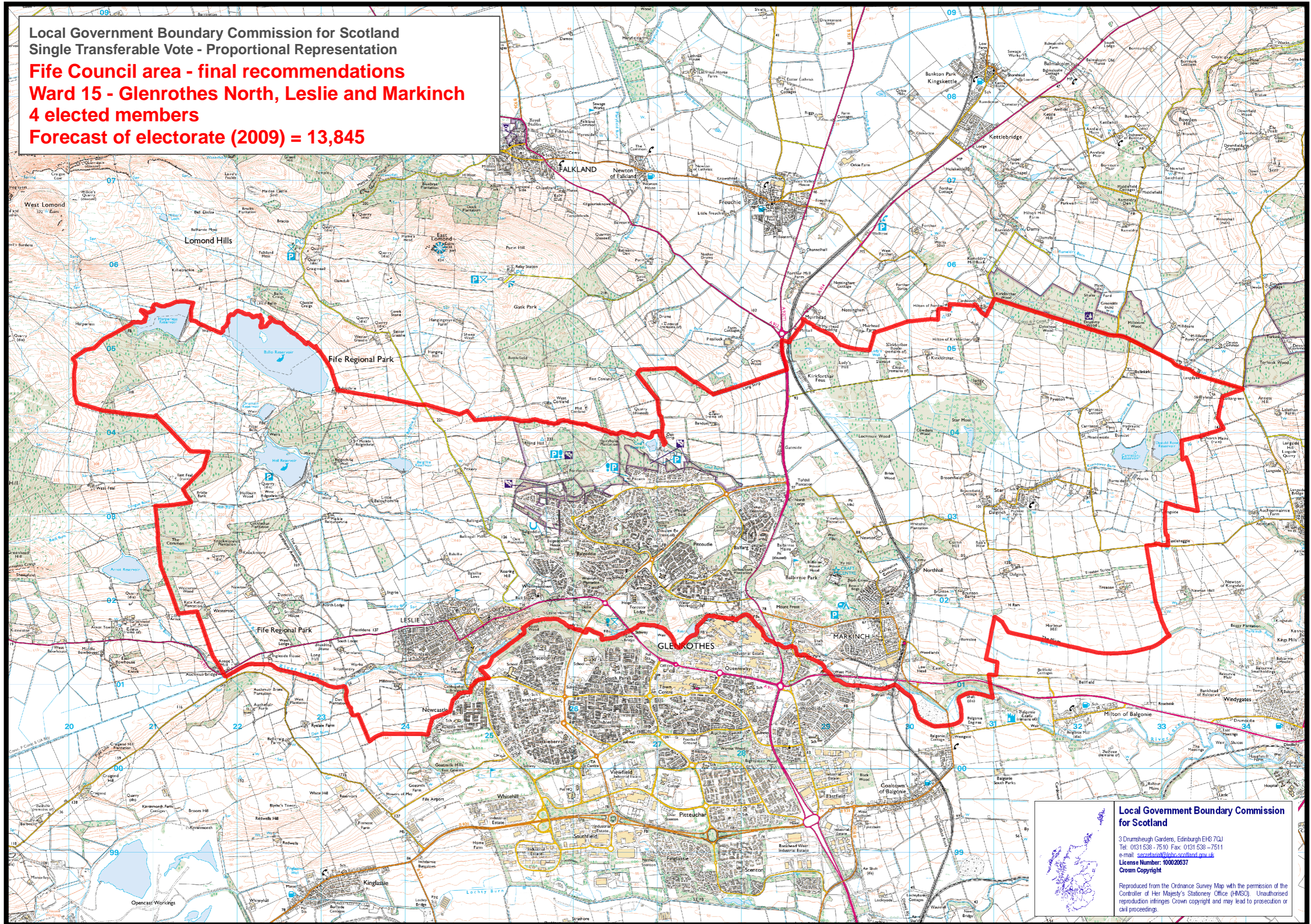


Local Government Boundary Commission for Scotland
Single Transferable Vote - Proportional Representation
Fife Council area - final recommendations
Ward 15 - Glenrothes North, Leslie and Markinch
4 elected members
Forecast of electorate (2009) = 13,845



Local Government Boundary Commission for Scotland
3 Drumshugh Gardens, Edinburgh EH3 7QJ
Tel: 0131 538 - 7510 Fax: 0131 538 - 7511
e-mail: secretariat@lgbcs.scotland.gov.uk
License Number: 100020637
Crown Copyright

Reproduced from the Ordnance Survey Map with the permission of the Controller of Her Majesty's Stationery Office (HMSO). Unauthorised reproduction infringes Crown copyright and may lead to prosecution or civil proceedings.