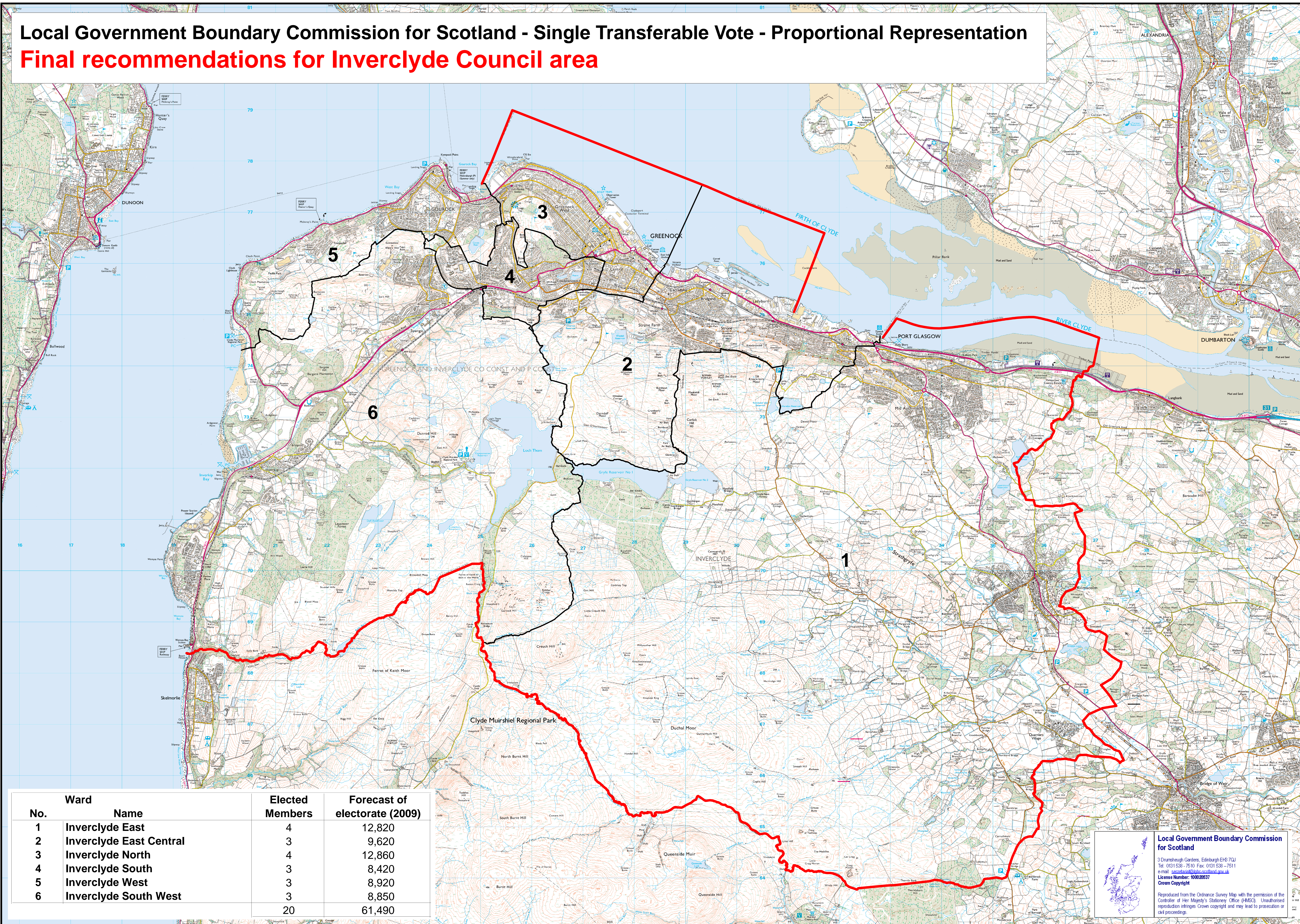


# Local Government Boundary Commission for Scotland - Single Transferable Vote - Proportional Representation

## Final recommendations for Inverclyde Council area



No.	Ward Name	Elected Members	Forecast of electorate (2009)
1	Inverclyde East	4	12,820
2	Inverclyde East Central	3	9,620
3	Inverclyde North	4	12,860
4	Inverclyde South	3	8,420
5	Inverclyde West	3	8,920
6	Inverclyde South West	3	8,850
		20	61,490

**Local Government Boundary Commission for Scotland**

3 Drumshough Gardens, Edinburgh EH6 7GJ  
 Tel: 0131 538-7540 Fax: 0131 538-7511  
 e-mail: [secretariat@lgb-scotland.gov.uk](mailto:secretariat@lgb-scotland.gov.uk)  
 License Number: 100020537  
 Crown Copyright

Reproduced from the Ordnance Survey Map with the permission of the Controller of Her Majesty's Stationery Office (HMSO). Unauthorised reproduction infringes Crown copyright and may lead to prosecution or civil proceedings.