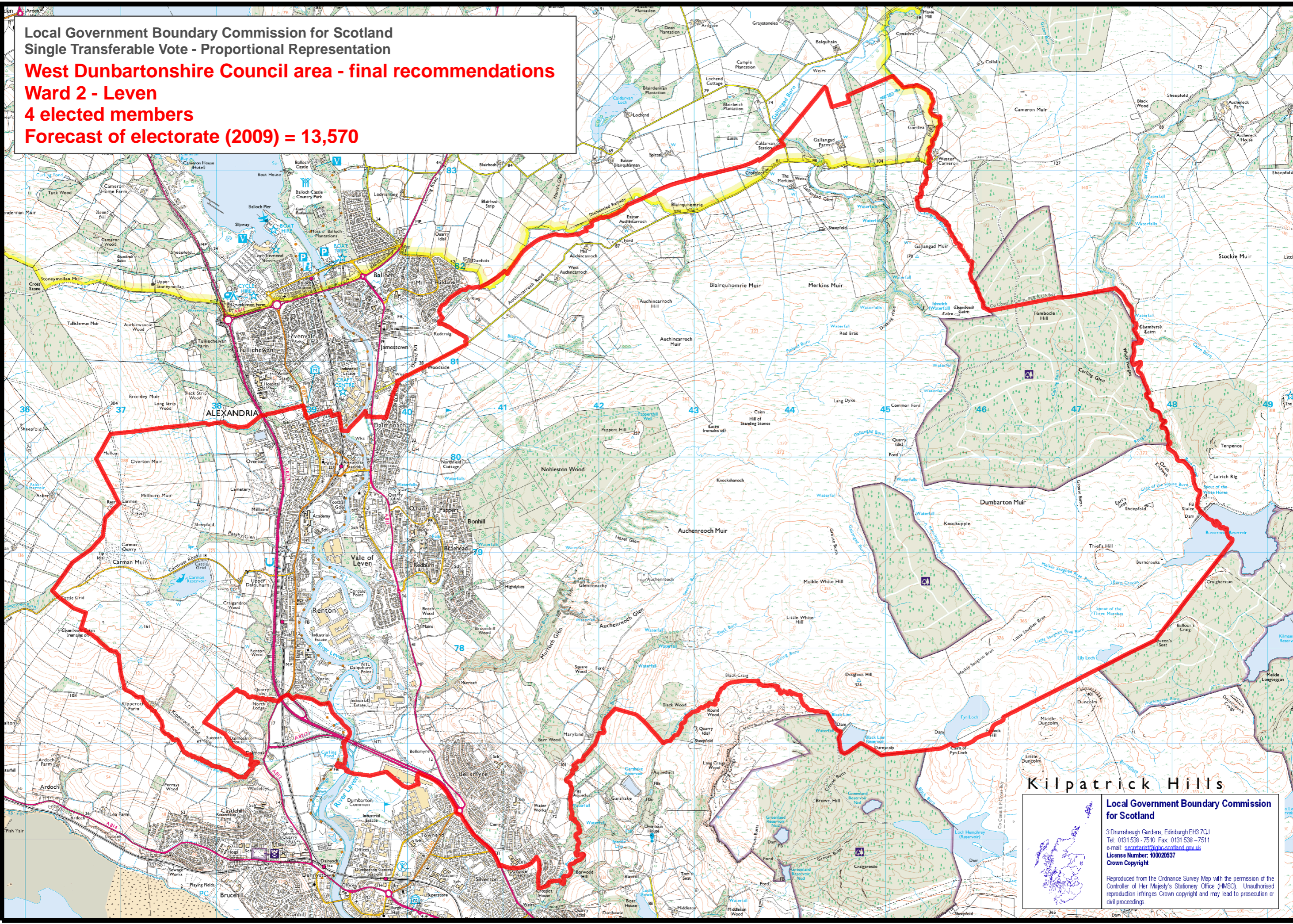


Local Government Boundary Commission for Scotland  
Single Transferable Vote - Proportional Representation  
**West Dunbartonshire Council area - final recommendations**  
**Ward 2 - Leven**  
**4 elected members**  
**Forecast of electorate (2009) = 13,570**



**Kilpatrick Hills**

**Local Government Boundary Commission for Scotland**  
3 Drumsheugh Gardens, Edinburgh EH3 7GJ  
Tel: 0131 538 - 7510 Fax: 0131 538 - 7511  
e-mail: [scotland@lgbcr.scotland.gov.uk](mailto:scotland@lgbcr.scotland.gov.uk)  
License Number: 100020637  
Crown Copyright

Reproduced from the Ordnance Survey Map with the permission of the Controller of Her Majesty's Stationery Office (HMSO). Unauthorised reproduction infringes Crown copyright and may lead to prosecution or civil proceedings.