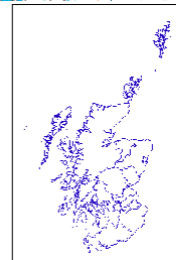
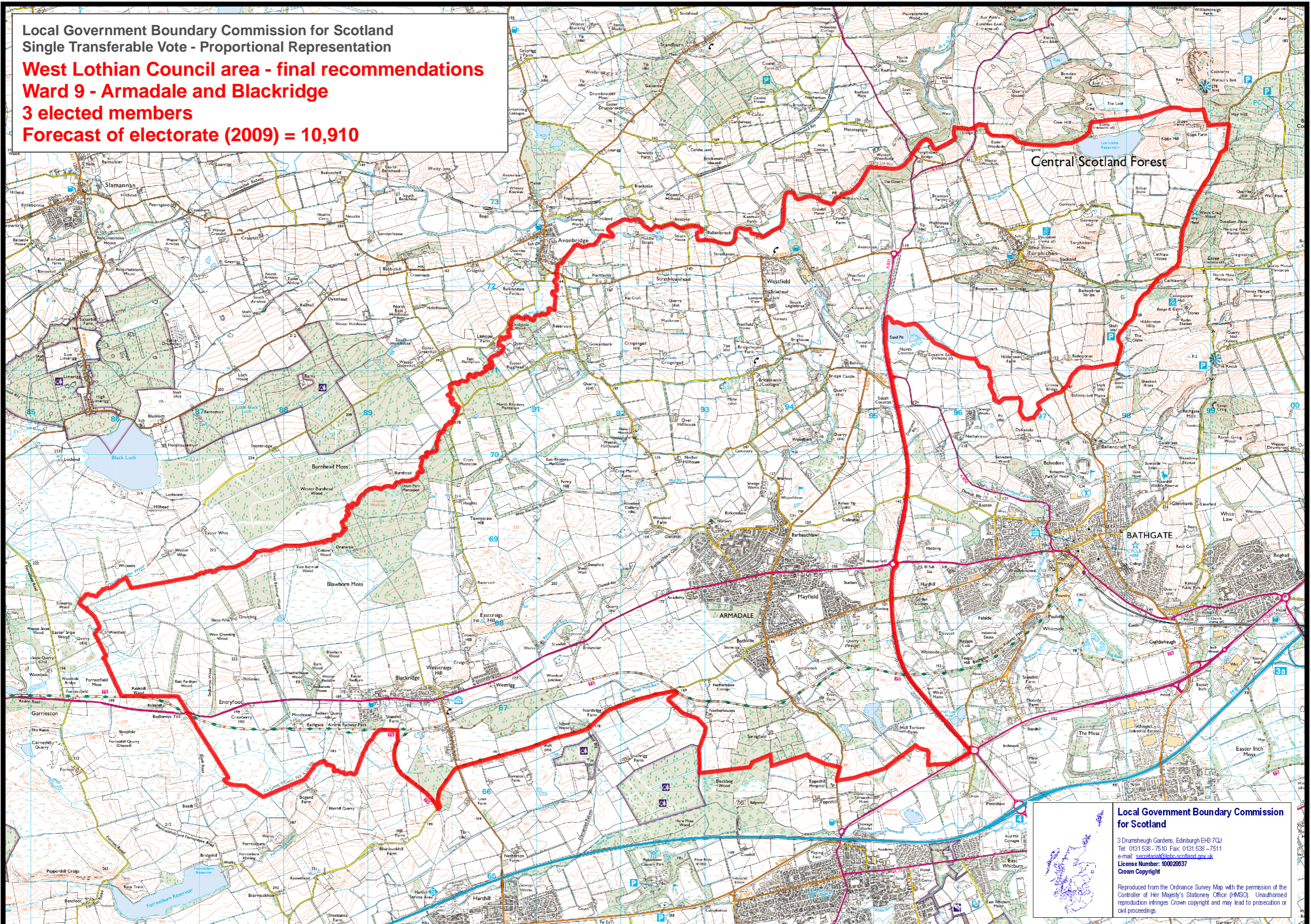


Local Government Boundary Commission for Scotland  
Single Transferable Vote - Proportional Representation

**West Lothian Council area - final recommendations**  
**Ward 9 - Armadale and Blackridge**  
**3 elected members**  
**Forecast of electorate (2009) = 10,910**



**Local Government Boundary Commission for Scotland**  
3 Drumshugh Gardens, Edinburgh EH8 7GJ  
Tel: 0131 538 - 7510 Fax: 0131 538 - 7511  
e-mail: [secretariat@lgbcs.scotland.gov.uk](mailto:secretariat@lgbcs.scotland.gov.uk)  
License Number: 10002637  
Crown Copyright

Reproduced from the Ordnance Survey Map with the permission of the Controller of Her Majesty's Stationery Office (HMSO). Unauthorised reproduction infringes Crown copyright and may lead to prosecution or civil proceedings.